

# Children and COVID-19: State Data Report

A joint report from the American Academy of Pediatrics and the Children's Hospital Association

Summary of publicly reported data from 49 states, NYC, DC, PR, and GU

**Version: 10/7/21**

*\* Note: The numbers in this report represent cumulative counts since states began reporting. The data are based on how public agencies collect, categorize and post information. All data reported by state/local health departments are preliminary and subject to change and reporting may change over time. Notably, in the summer of 2021, some states have revised cases counts previously reported, begun reporting less frequently, or dropped metrics previously reported. For example, due to several changes on their dashboards and the data currently available, AL, NE, and TX data in this report are not current (cumulative data through 7/29/21, 6/24/21, and 8/26/21 respectively). Readers should consider these factors. States may have additional information on their web sites.*



CHILDREN'S  
HOSPITAL  
ASSOCIATION

American Academy of Pediatrics

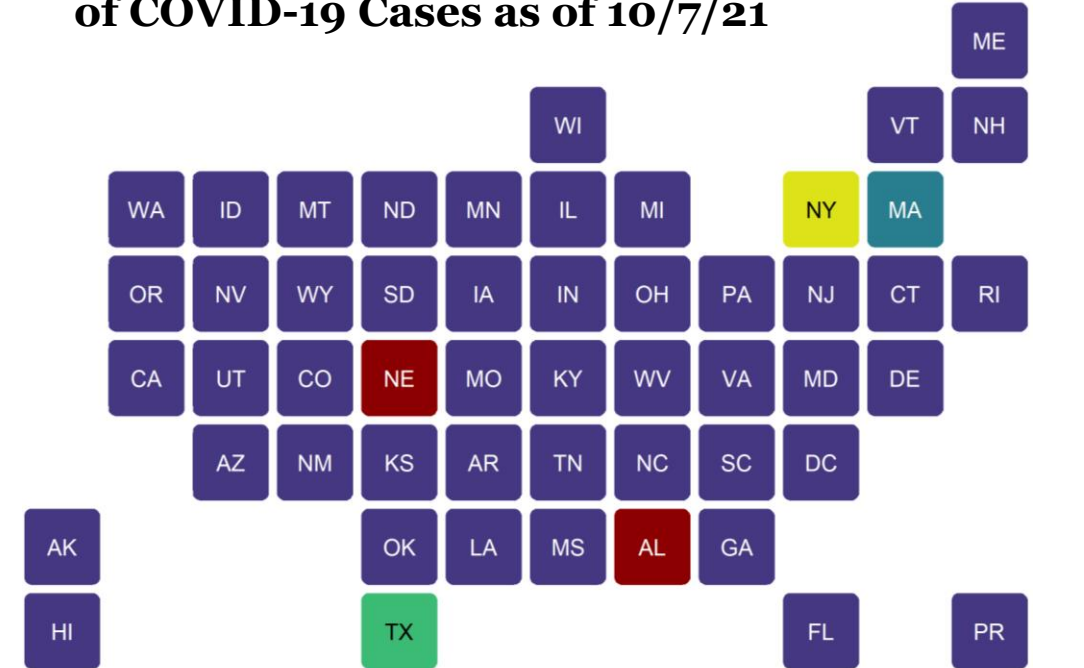
DEDICATED TO THE HEALTH OF ALL CHILDREN®



# COVID-19: Available Data for Children

- State-level reports are the best publicly available data on COVID-19 cases in children
- Starting in June 2021, some states reported less frequently and dropped metrics previously reported as overall cases decreased
- This report summarizes what was available on 10/7/21
- **49 states, NYC, DC, Puerto Rico and Guam** provided age distributions of reported COVID-19 cases
  - 11 states provided age distribution of testing
  - 24 states and NYC provided age distribution of hospitalizations
  - 45 states, NYC, PR and Guam provided age distribution of deaths

**Fig 1A: States Reporting Age Distribution of COVID-19 Cases as of 10/7/21**



**Reporting age distribution of COVID-19 cases:**

- Yes: Reported age distribution of cases
- TX: Reported age distribution for only 3% of cases; Cases through 8/26
- NY: Only NYC reported age distribution of cases
- MA: Only reported age distribution of cases added in past 2 weeks
- NE: Cases through 6/24/21; AL: Cases through 7/29/21

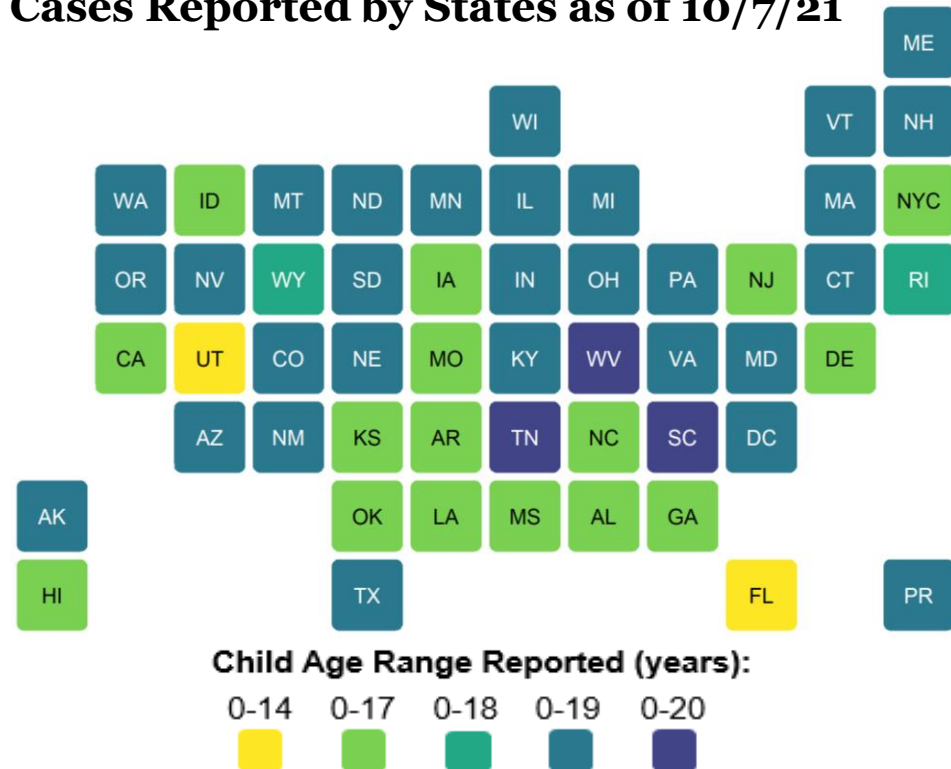
See detail in Appendix: Data from 49 states, NYC, DC, PR, and GU  
Analysis by American Academy of Pediatrics and Children's Hospital Association  
All data reported by state/local health departments are preliminary and subject to change

# Children and COVID-19: Data Limitations

## General Limitations

- Format, content, and metrics of reported COVID-19 data differed substantially by state
- Definition of "child": Age ranges reported for children varied by state (0-14, 0-17, 0-18, 0-19, and 0-20 years; see Fig 1B)
- Unknown: Number of children infected but not tested and confirmed

**Fig 1B: Child Age Ranges of COVID-19 Cases Reported by States as of 10/7/21**



## State-Level Changes

- TX: Age distribution reported for only 3% of confirmed cases (99,989/3,421,910), resulting in an undercount of child cases; TX cumulative cases through 8/26/21
- NY: Did not provide age distribution for state-wide cases (NYC only)
- AL: As of 8/13/20, changed definition of child case from 0-24 to 0-17 years; as of 9/17/20, provided age distribution for confirmed cases only; as of 8/5/21, due to change in data available, AL child cases and deaths through 7/29/21
- HI: As of 8/27/20, changed definition of child case from 0-19 to 0-17 years
- MA: As of 9/3/20, revised definition of probable case, leading to a reduction in total case count, and changed reporting from total child cases to cases added in last two weeks
- RI: As of 9/10/20, changed definition of child case from 0-19 to 0-18 years
- MO: As of 10/1/20, changed definition of child cases from 0-19 to 0-17 years
- PR: As of 3/11/21, due to a change in data available, a calculation was required to obtain confirmed and probable child case totals, leading to a reduction in total child case count
- AK: On 6/17/21, did not report child hospitalizations or child deaths
- FL: As of 6/24/21, stopped reporting child hospitalizations; due to change in data available, calculation required to obtain child cases for 0-14 years
- NE: As of 6/30/21, COVID-19 dashboard is no longer available; NE child cases, hospitalizations, and deaths through 6/24/21
- IA: As of 7/15/21, stopped updating child testing data
- LA: As of 8/5/21, changed reporting total cases and deaths from confirmed to confirmed and probable (combined)
- WV: As of 8/12/21, WV changed definition of child case from 0-19 to 0-20 years

See detail in Appendix: Data from 49 states, NYC, DC, PR, and GU; Analysis by American Academy of Pediatrics and Children's Hospital Association; All data reported by state/local health departments are preliminary and subject to change

# Children and COVID-19: 10/7/21

## Summary of State-Level Data Provided in this Report

Detail and links to state/local data sources provided in Appendix

### Cumulative Number of Child COVID-19 Cases\*

- 6,047,371 total child COVID-19 cases reported, and children represented 16.3% (6,047,371/37,099,164) of all cases
- Overall rate: 8,035 cases per 100,000 children in the population

### Change in Child COVID-19 Cases\*

- 148,222 child COVID-19 cases were reported the past week from 9/30/21-10/7/21 (5,899,148 to 6,047,371) and children represented 24.8% (148,222/597,704) of the weekly reported cases
- Over two weeks, 9/23/21-10/7/21, there was an 6% increase in the cumulated number of child COVID-19 cases (321,691 cases added (5,725,680 to 6,047,371))

### Testing (11 states reported)\*\*

- Among states reporting, children made up between 11.6%-22.2% of total cumulated state tests, and between 5.1%-18.2% of children tested were tested positive

### Hospitalizations (24 states and NYC reported)\*

- Among states reporting, children ranged from 1.6%-4.2% of their total cumulated hospitalizations, and 0.1%-2.0% of all their child COVID-19 cases resulted in hospitalization

### Mortality (45 states, NYC, PR and GU reported)\*

- Among states reporting, children were 0.00%-0.26% of all COVID-19 deaths, and 7 states reported zero child deaths
- In states reporting, 0.00%-0.03% of all child COVID-19 cases resulted in death

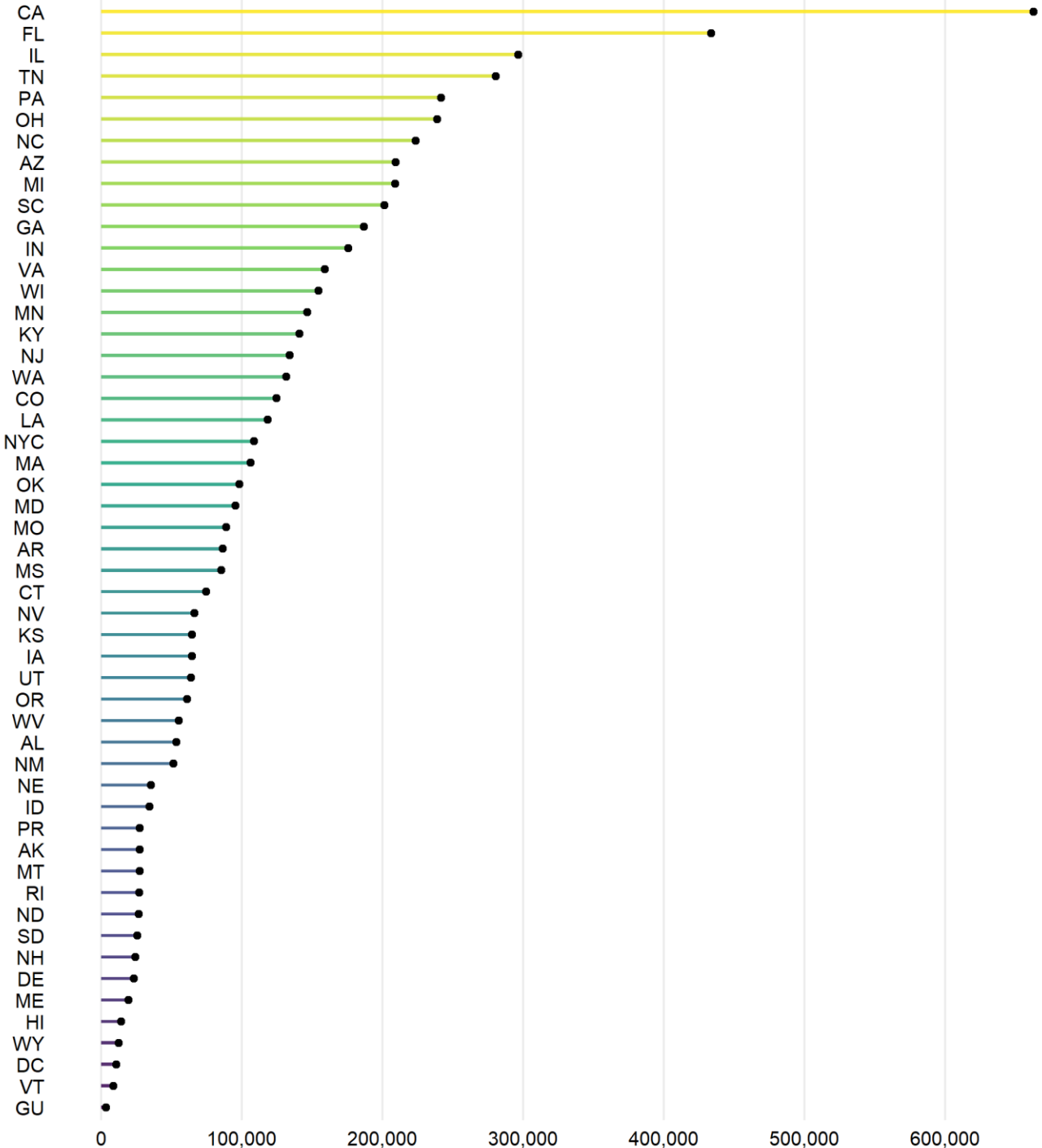
See detail in Appendix: Data from 49 states, NYC, DC, PR, and GU; Analysis by American Academy of Pediatrics and Children's Hospital Association

\* Note: The numbers in this summary represent cumulative counts since states began reporting. In this summary and full report, the data are based on how public agencies collect, categorize and post information. All data reported by state/local health departments are preliminary and subject to change and reporting may change over time. Notably, in the summer of 2021, some states have revised cases counts previously reported, begun reporting less frequently, or dropped metrics previously reported. For example, due to several changes on their dashboards and the data currently available, AL, NE, and TX data in this report are not current (cumulative data through 7/29/21, 6/24/21, and 8/26/21 respectively). Readers should consider these factors. States may have additional information on their web sites.

^ On 7/15/21, IA stopped updating child testing data; IA cumulative tests through 7/8/21

# Fig 2. Cumulative Number of Child COVID-19 Cases: 10/7/21

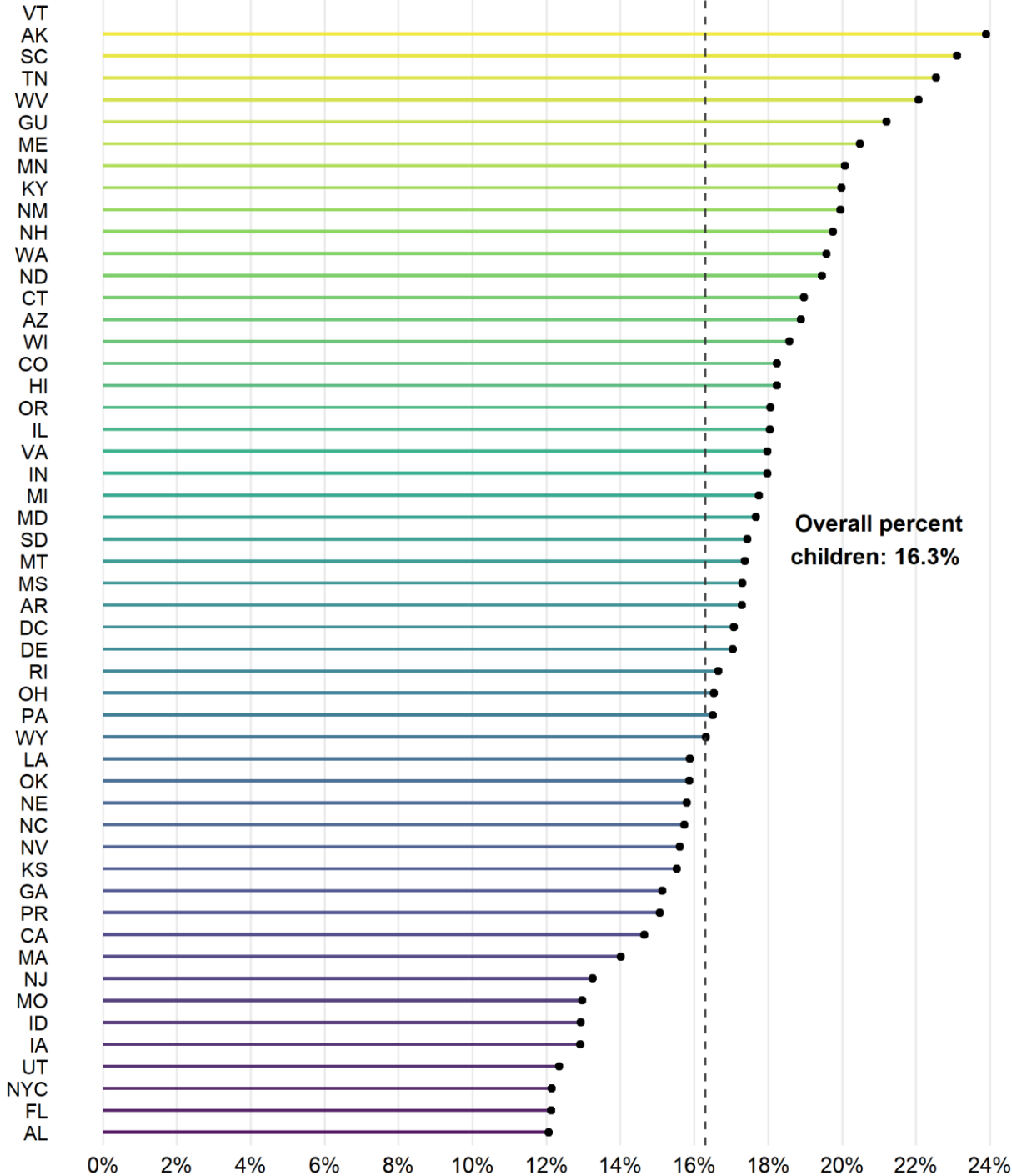
- 6,047,371 total child COVID-19 cases (cumulative)
- Ten states reported 200,000+ child cases
- One state reported fewer than 10,000 child cases



See detail in Appendix: Data from 48 states, NYC, DC, PR, and GU (TX excluded from figure)  
All data reported by state/local health departments are preliminary and subject to change  
Analysis by American Academy of Pediatrics and Children's Hospital Association  
As of 6/30/21, NE COVID-19 dashboard is no longer available; NE cumulative cases through 6/24/21  
Due to available data and changes made to dashboard, AL cumulative cases through 7/29/21

# Fig 3. Percent of Cumulative COVID-19 Cases that were Children: 10/7/21

- Children represented 16.3% (6,047,371/37,099,164) of all available cases
- Nine states reported 20% or more of cumulated cases were children



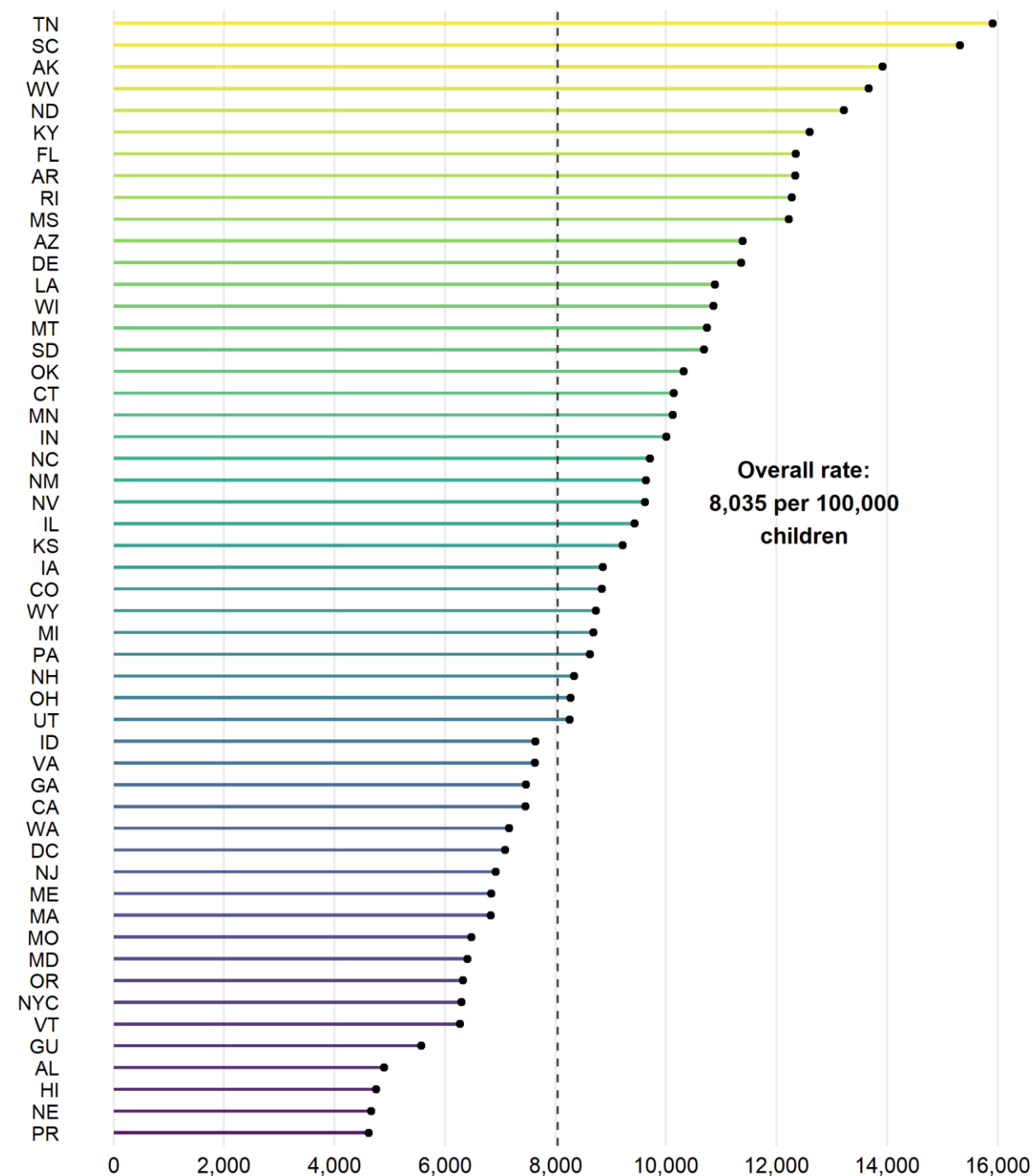
See detail in Appendix: Data from 48 states, NYC, DC, PR, and GU (TX excluded from figure)  
All data reported by state/local health departments are preliminary and subject to change  
Analysis by American Academy of Pediatrics and Children's Hospital Association  
As of 6/30/21, NE COVID-19 dashboard is no longer available; NE cumulative cases through 6/24/21  
Due to available data and changes made to dashboard, AL cumulative cases through 7/29/21



## Fig 4. Cumulative COVID-19 Cases per 100,000 Children: 10/7/21

- Calculated using state-level population estimates from US Census Bureau (2019)\*
- Overall rate: 8,035 child COVID-19 cases per 100,000 children in the population
- Twenty states reported more than 10,000 cases per 100,000

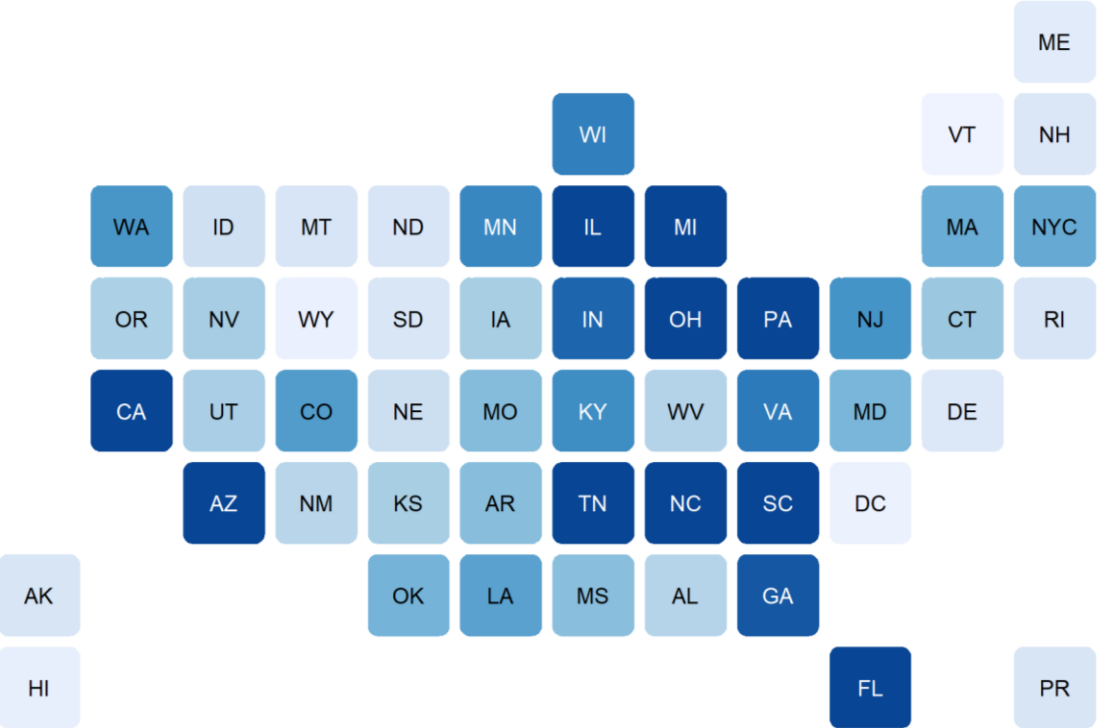
See detail in Appendix: Data from 48 states, NYC, DC, PR, and GU (TX excluded from figure)  
 All data reported by state/local health departments are preliminary and subject to change  
 Analysis by American Academy of Pediatrics and Children's Hospital Association  
 As of 6/30/21, NE COVID-19 dashboard is no longer available; NE cumulative cases through 6/24/21  
 Due to available data and changes made to dashboard, AL cumulative cases through 7/29/21  
 \* Source: US Census Bureau, State Population by Characteristics: 2010-2019,  
<https://www.census.gov/data/tables/time-series/demo/popest/2010s-state-detail.html>



# Fig 5. Cumulative Child COVID-19 Cases and Percent Increase in Child Cases

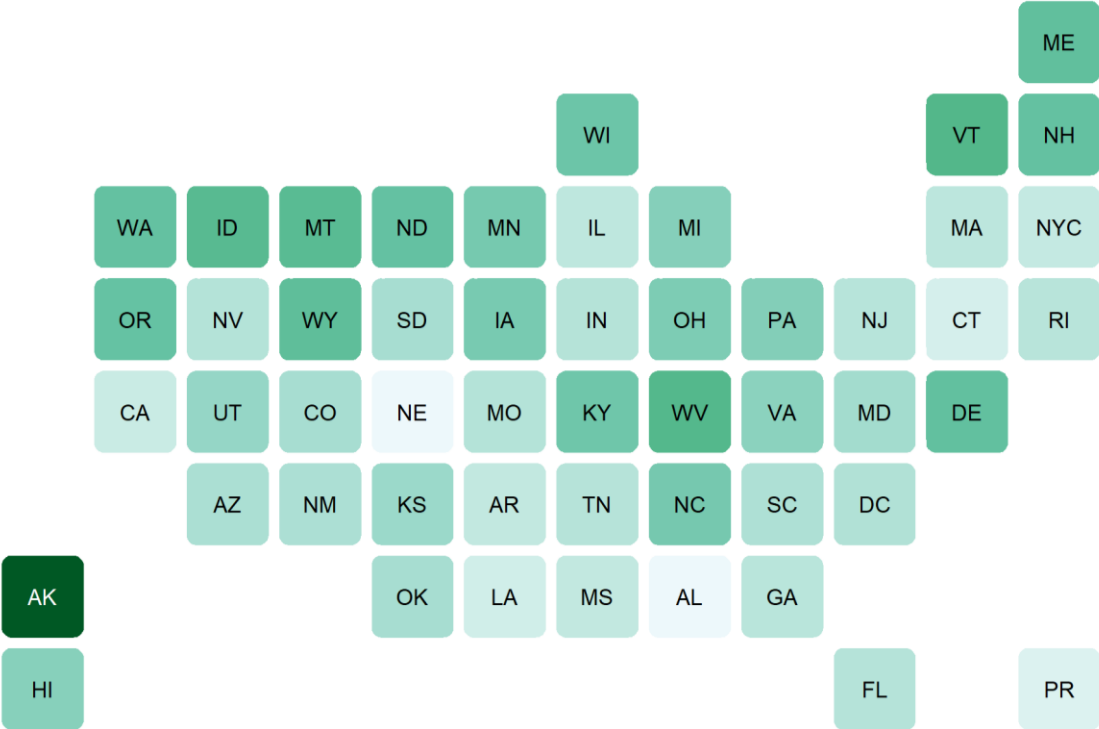
## A. Cumulative Child COVID-19 Cases, 10/7/21

10 states with 200,000+ cumulative child cases



## B. Percent Increase in Child Cases, 9/23/21-10/7/21

From 9/23-10/7, there were 321,691 child cases added (5,725,680 to 6,047,371; 6% increase)



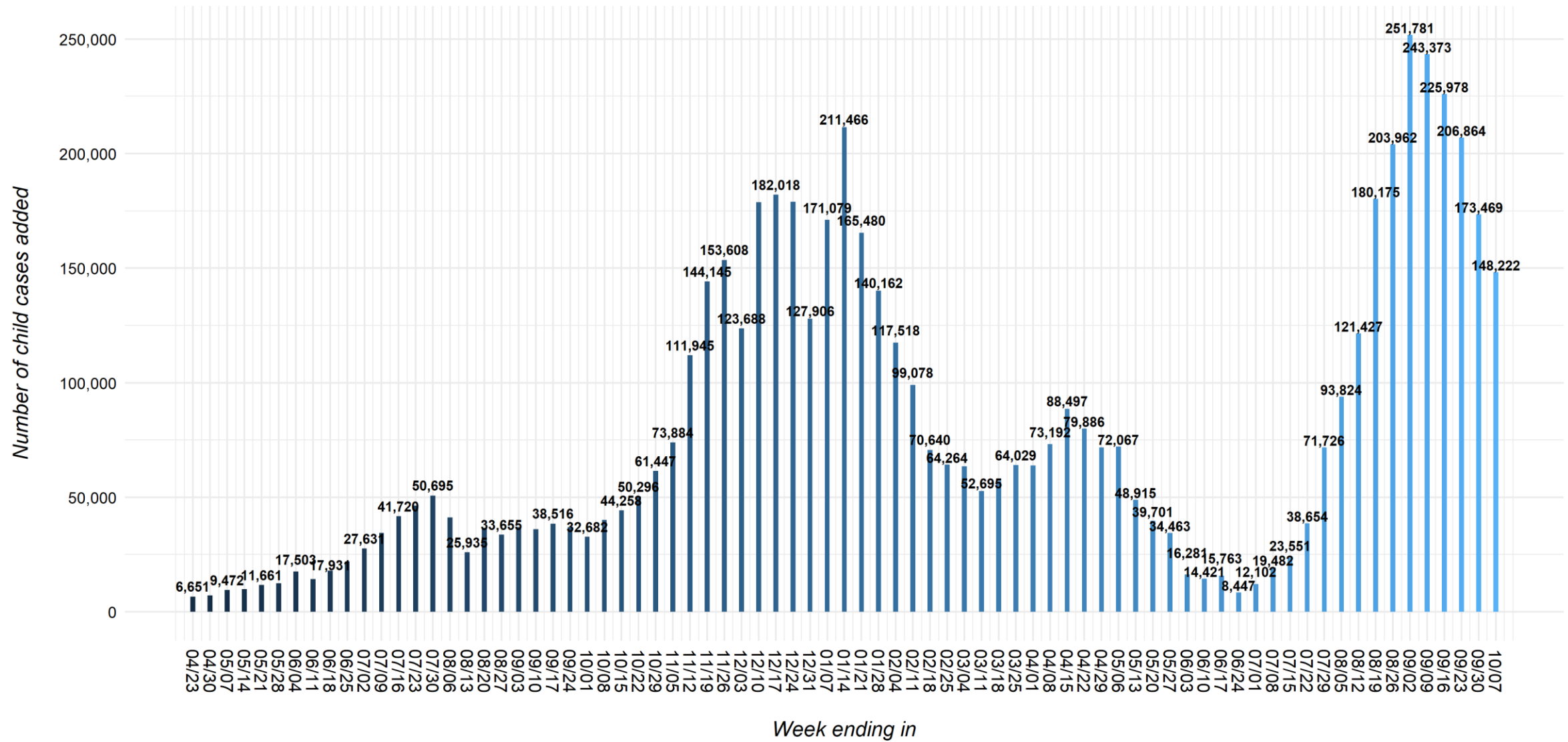
Cumulative child COVID-19 cases (thousands)  
50 100 150 200+

Percent increase  
0 5 10 15+

See detail in Appendix: Data from 48 states, NYC, DC, and PR (TX excluded from figures)  
All data reported by state/local health departments are preliminary and subject to change; Analysis by American Academy of Pediatrics and Children's Hospital Association  
As of 6/30/21, NE COVID-19 dashboard is no longer available; NE cumulative cases through 6/24/21  
Due to available data and changes made to dashboard, AL cumulative cases through 7/29/21

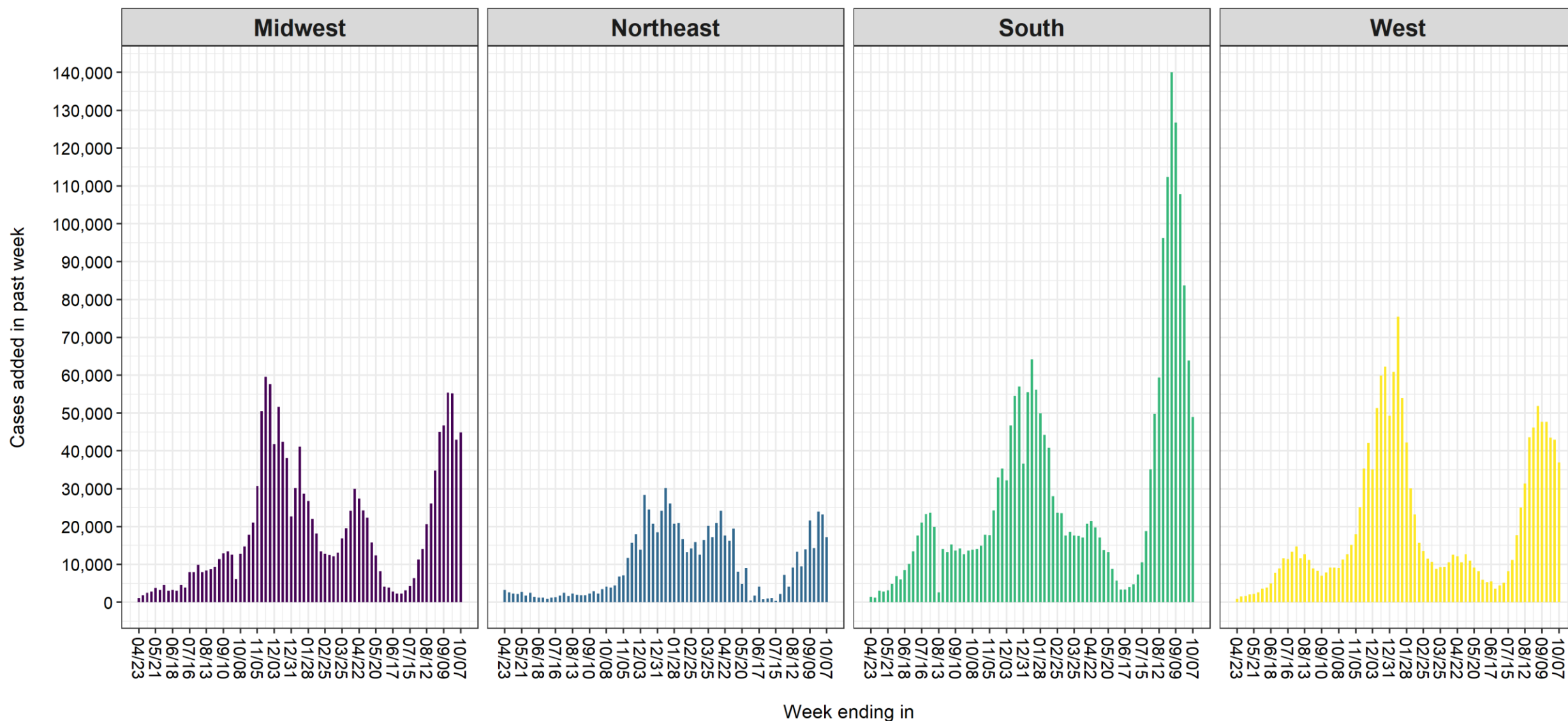


# Fig 6. United States: Number of Child COVID-19 Cases Added in Past Week\*



\* Note: 5 states changed their definition of child cases: AL as of 8/13/20, HI as of 8/27/20, RI as of 9/10/20, MO as of 10/1/20, WV as of 8/12/21  
 TX reported age for only a small proportion of total cases each week (eg, 3-20%); TX cumulative cases through 8/26/21  
 As of 6/30/21, NE COVID-19 dashboard is no longer available; NE cumulative cases through 6/24/21  
 Due to available data and changes made to dashboard, AL cumulative cases through 7/29/21  
 Due to available data and calculations required to obtain MA child cases, weekly estimates fluctuate (eg, on 10/7/21, there were 871 fewer cumulative child cases)  
 See detail in Appendix: Data from 49 states, NYC, DC, PR and GU  
 All data reported by state/local health departments are preliminary and subject to change; Analysis by American Academy of Pediatrics and Children's Hospital Association

# Fig 7. United States: Child COVID-19 Cases Added in Past Week, by Region\*



\* Note: Regions are the US Census Regions

5 states changed their definition of child cases: AL as of 8/13/20, HI as of 8/27/20, RI as of 9/10/20, MO as of 10/1/20, WV as of 8/12/21;

TX reported age for only a small proportion of total cases each week (eg, 3-20%); TX cumulative cases through 8/26/21

As of 6/30/21, NE COVID-19 dashboard is no longer available; NE cumulative cases through 6/24/21

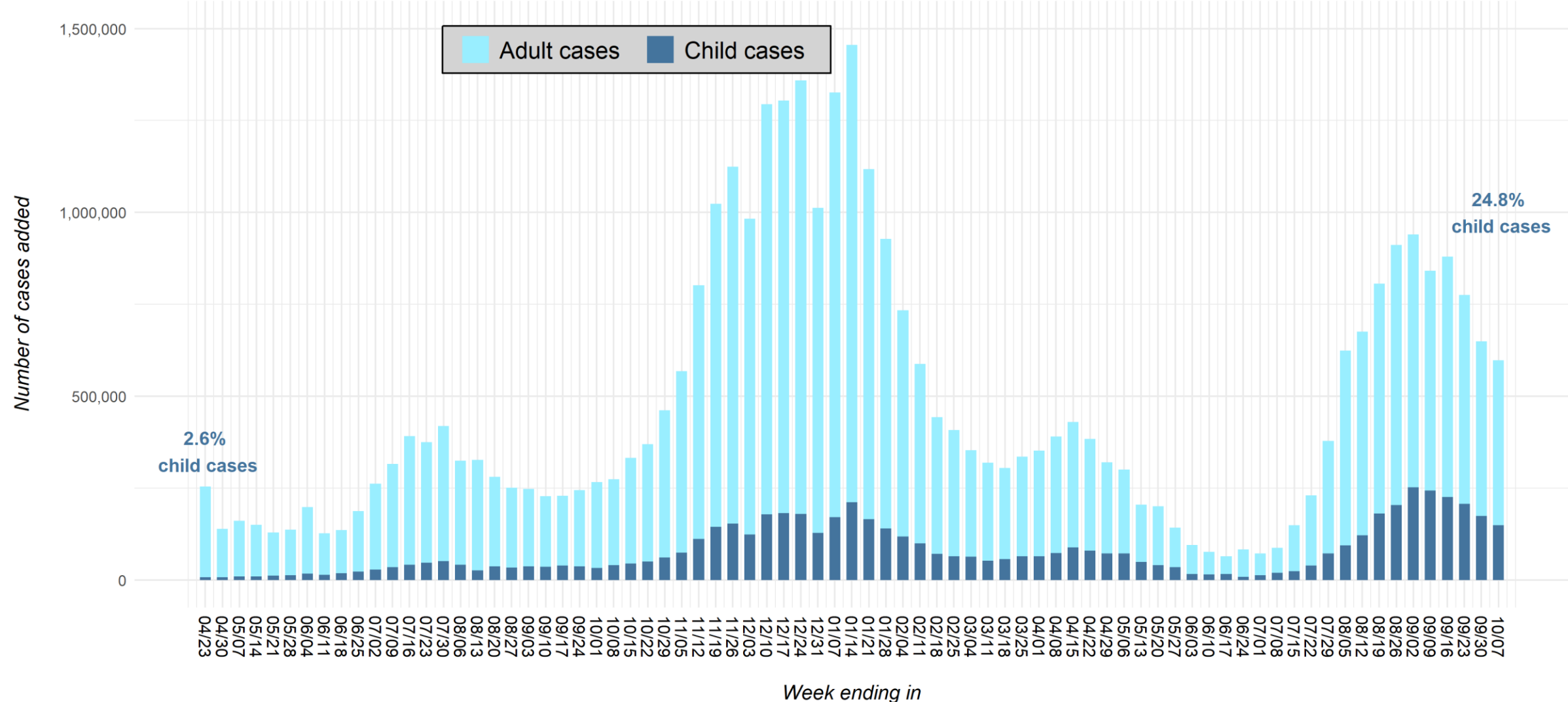
Due to available data and changes made to dashboard, AL cumulative cases through 7/29/21

Due to available data and calculations required to obtain MA child cases, weekly estimates fluctuate (eg, on 10/7/21, there were 871 fewer cumulative child cases)

See detail in Appendix: Data from 49 states, NYC, DC, PR and GU

All data reported by state/local health departments are preliminary and subject to change; Analysis by American Academy of Pediatrics and Children's Hospital Association

Fig 8. United States: Number of COVID-19 Cases Added in Past Week for Children and Adults\*



\* Note: 5 states changed their definition of child cases: AL as of 8/13/20, HI as of 8/27/20, RI as of 9/10/20, MO as of 10/1/20, WV as of 8/12/21;  
TX reported age for only a small proportion of total cases each week (eg, 3-20%); TX cumulative cases through 8/26/21  
As of 6/30/21, NE COVID-19 dashboard is no longer available; NE cumulative cases through 6/24/21  
Due to available data and changes made to dashboard, AL cumulative cases through 7/29/21  
Due to available data and calculations required to obtain MA child cases, weekly estimates fluctuate (eg, on 10/7/21, there were 871 fewer cumulative child cases)  
See detail in Appendix: Data from 49 states, NYC, DC, PR and GU  
All data reported by state/local health departments are preliminary and subject to change; Analysis by American Academy of Pediatrics and Children's Hospital Association

## Appendix Table 1: Case Data Available on 10/7/21

Summary data across the 49 states, NYC, DC, PR, and GU that provided age distribution of reported COVID-19 cases\*

Child population, 2019	Cumulative total cases (all ages)	Cumulative child cases	Cumulative percent children of total cases	Cases per 100,000 children
75,266,842	37,099,164	6,047,371	16.3%	8034.6

\* Note: Data represent cumulative counts since states began reporting; All data reported by state/local health departments are preliminary and subject to change  
As of 6/30/21, NE COVID-19 dashboard is no longer available; NE cumulative cases through 6/24/21  
TX reported age for only a small proportion of total cases each week (eg, 3-20%); TX cumulative cases through 8/26/21  
Due to available data and changes made to dashboard, AL cumulative cases through 7/29/21

## Appendix Table 2A: Summary of Child Case Data from 4/16/20 – 10/7/21\*

Date	Number of locations reporting age	Cumulative total cases (all ages)	Cumulative child cases^	Percent children of total cases	Cases per 100,000 children
10/7/21	49 states, NYC, DC, PR and GU#	37,099,164	6,047,371	16.3%	8034.6
9/30/21	49 states, NYC, DC, PR and GU	36,501,460	5,899,148	16.2%	7837.6
9/23/21	49 states, NYC, DC, PR and GU	35,852,579	5,725,680	16.0%	7607.2
9/16/21	49 states, NYC, DC, PR and GU#	35,077,099	5,518,815	15.7%	7332.3
9/9/21	49 states, NYC, DC, PR and GU	34,198,122	5,292,837	15.5%	7032.1
9/2/21	49 states, NYC, DC, PR and GU	33,357,284	5,049,465	15.1%	6708.8
8/26/21	49 states, NYC, DC, PR and GU• #	32,417,814	4,797,683	14.8%	6374.2
8/19/21	49 states, NYC, DC, PR and GU	31,506,988	4,593,721	14.6%	6103.2
8/12/21	49 states, NYC, DC, PR and GU♦	30,700,985	4,413,547	14.4%	5863.9
8/5/21	49 states, NYC, DC, PR and GU# × ≠	30,025,995	4,292,120	14.3%	5702.5
7/29/21	49 states, NYC, DC, PR and GU	29,402,405	4,198,296	14.3%	5577.9
7/22/21	49 states, NYC, DC, PR and GU# •	29,023,908	4,126,570	14.2%	5482.6
7/15/21	49 states, NYC, DC, PR and GU# ±	28,793,845	4,087,916	14.2%	5431.2
7/8/21	49 states, NYC, DC, PR and GU	28,645,258	4,064,365	14.2%	5399.9
7/1/21	49 states, NYC, DC, PR and GU# Δ	28,557,884	4,044,884	14.2%	5374.1

\* Note: Data represent cumulative counts since states began reporting; All data reported by state/local health departments are preliminary and subject to change

^ Unknown: number of children infected but not tested and confirmed

# For several weeks in 2021 (6/3, 6/10, 6/24, 7/1, 7/15, 7/22, 8/5, 8/26, 9/16, and 10/7), due to available data and calculations required to obtain child cases, there is a downward revision of cumulative child cases for MA; On 10/7/21 there were 871 fewer cumulative child cases

• As of 7/22/21, TX stopped updating demographic case data; As of 8/26/21, TX started updating demographic case data again and added 2,147 child cases; TX cumulative cases through 8/26/21

♦ As of 8/12/21, WV changed definition of child case from 0-19 to 0-20 years

× As of 8/5/21, due to available data and changes made to dashboard, AL cumulative cases through 7/29/21

≠ On 8/5/21, due to available data and changes made to dashboard, definition of LA total cumulative total cases changed

± On 7/15/21, IA revised case data, resulting in a downward revision of cumulative child cases

Δ As of 6/30/21, NE COVID-19 dashboard is no longer available; NE cumulative cases through 6/24/21

## Appendix Table 2A, cont.: Summary of Child Case Data from 4/16/20 – 10/7/21\*

Date	Number of locations reporting age	Cumulative total cases (all ages)	Cumulative child cases^	Percent children of total cases	Cases per 100,000 children
6/24/21	49 states, NYC, DC, PR and GU# †	28,486,004	4,032,782	14.2%	5358.0
6/17/21	49 states, NYC, DC, PR and GU	28,402,723	4,024,335	14.2%	5346.8
6/10/21	49 states, NYC, DC, PR and GU#	28,338,538	4,008,572	14.1%	5325.8
6/3/21	49 states, NYC, DC, PR and GU#	28,262,591	3,994,151	14.1%	5306.7
5/27/21	49 states, NYC, DC, PR and GU	28,167,723	3,977,870	14.1%	5285.0
5/20/21	49 states, NYC, DC, PR and GU~	28,025,875	3,943,407	14.1%	5239.2
5/13/21	49 states, NYC, DC, PR and GU	27,825,369	3,903,706	14.0%	5186.5
5/6/21	49 states, NYC, DC, PR and GU <sup>○</sup>	27,621,153	3,854,791	14.0%	5121.5
4/29/21	49 states, NYC, DC, PR and GU <sup>○</sup> ~	27,320,708	3,782,724	13.8%	5025.8
4/22/21	49 states, NYC, DC, PR and GU	27,001,107	3,711,075	13.7%	4930.6
4/15/21	49 states, NYC, DC, PR, and GU	26,617,913	3,631,189	13.6%	4824.4

\* Note: Data represent cumulative counts since states began reporting; All data reported by state/local health departments are preliminary and subject to change

^ Unknown: number of children infected but not tested and confirmed

# For several weeks in 2021 (6/3, 6/10, 6/24, 7/1, 7/15, 7/22, 8/5, and 8/26), due to available data and calculations required to obtain child cases, there is a downward revision of cumulative child cases for MA; On 8/26/21, MA reported 1,015 fewer cases

† On 6/24/21, due to available CO data and calculation required to obtain child total cases, there is a downward revision of cumulative child cases

~ On 4/29/21, and 5/20/21, WY revised case data, resulting in a downward revision of cumulative child cases

○ On 4/29/21, RI revised case data, resulting in a downward revision of cumulative cases; On 5/6/21, due to data revision and lag in reporting, RI experienced 30% increase in child cases (4,906 cases added)



## Appendix Table 2A, cont.: Summary of Child Case Data from 4/16/20 – 10/7/21\*

Date	Number of locations reporting age	Cumulative total cases (all ages)	Cumulative child cases^	Percent children of total cases	Cases per 100,000 children
4/8/21	49 states, NYC, DC, PR, and GU	26,188,186	3,542,692	13.5%	4706.8
4/1/21	49 states, NYC, DC, PR, and GU <sup>○</sup>	25,798,537	3,469,500	13.4%	4609.6
3/25/21	49 states, NYC, DC, PR, and GU	25,446,361	3,405,638	13.4%	4524.8
3/18/21	49 states, NYC, DC, PR, and GU	25,111,012	3,341,608	13.3%	4439.7
3/11/21	49 states, NYC, DC, PR, and GU <sup># □</sup>	24,806,402	3,284,531	13.2%	4363.8
3/4/21	49 states, NYC, DC, PR, and GU	24,487,634	3,231,836	13.2%	4293.8
2/25/21	49 states, NYC, DC, PR, and GU	24,134,958	3,168,274	13.1%	4209.4
2/18/21	49 states, NYC, DC, PR, and GU <sup># ~</sup>	23,726,925	3,104,010	13.1%	4124.0
2/11/21	49 states, NYC, DC, PR, and GU	23,284,471	3,033,370	13.0%	4030.2
2/4/21	49 states, NYC, DC, PR, and GU	22,697,315	2,934,292	12.9%	3898.5
1/28/21	49 states, NYC, DC, PR, and GU	21,963,445	2,816,775	12.8%	3742.4
1/21/21	49 states, NYC, DC, PR, and GU	21,036,194	2,676,612	12.7%	3556.2
1/14/21	49 states, NYC, DC, PR, and GU	19,918,714	2,511,132	12.6%	3336.3
1/7/21	49 states, NYC, DC, PR, and GU	18,463,319	2,299,666	12.5%	3055.4
12/31/20	49 states, NYC, DC, PR, and GU	17,137,295	2,128,587	12.4%	2828.1
12/24/20	49 states, NYC, DC, PR, and GU	16,125,324	2,000,681	12.4%	2658.1
12/17/20	49 states, NYC, DC, PR, and GU	14,766,831	1,821,746	12.3%	2420.4
12/10/20	49 states, NYC, DC, PR, and GU	13,462,337	1,639,728	12.2%	2178.6
12/3/20	49 states, NYC, DC, PR, and GU	12,167,620	1,460,905	12.0%	1941.0

\* Note: Data represent cumulative counts since states began reporting; All data reported by state/local health departments are preliminary and subject to change

^ Unknown: number of children infected but not tested and confirmed

○ On 4/1/21, RI revised case data, resulting in a downward revision of cumulative cases; On 5/6/21, due to data revision and lag in reporting, RI experienced 30% increase in child cases (4,906 cases added)

# On 2/18/21 and 3/11/21, due to available MA data and calculations required to obtain child total cases, there is a downward revision of cumulative child cases

□ On 3/11/21, due to only PR data available and calculation required to obtain child total cases, there is a downward revision of cumulative child cases

~ On 2/18/21, WY revised case data, resulting in a downward revision of cumulative child cases



## Appendix Table 2A, cont.: Summary of Child Case Data from 4/16/20 – 10/7/21\*

Date	Number of locations reporting age	Cumulative total cases (all ages)	Cumulative child cases^	Percent children of total cases	Cases per 100,000 children
11/26/20	49 states, NYC, DC, PR, and GU	11,184,900	1,337,217	12.0%	1776.6
11/19/20	49 states, NYC, DC, PR, and GU	10,060,749	1,183,609	11.8%	1572.6
11/12/20	49 states, NYC, DC, PR, and GU	9,037,991	1,039,464	11.5%	1381.0
11/5/20	49 states, NYC, DC, PR, and GU	8,236,710	927,518	11.3%	1232.3
10/29/20	49 states, NYC, DC, PR, and GU	7,669,038	853,635	11.1%	1134.1
10/22/20	49 states, NYC, DC, PR, and GU	7,207,186	792,188	11.0%	1052.5
10/15/20	49 states, NYC, DC, PR, and GU	6,837,527	741,891	10.9%	985.7
10/8/20	49 states, NYC, DC, PR, and GU	6,505,390	697,633	10.7%	926.9
10/1/20	49 states, NYC, DC, PR, and GU <sup>#</sup>	6,231,564	657,572	10.6%	873.7
9/24/20	49 states, NYC, DC, PR, and GU	5,965,268	624,890	10.5%	828.5
9/17/20	49 states, NYC, DC, PR, and GU	5,721,402	587,948	10.3%	779.5
9/10/20	49 states, NYC, DC, PR, and GU	5,493,006	549,432	10.0%	728.5
9/3/20	49 states, NYC, DC, PR, and GU	5,265,157	513,415	9.8%	680.3
8/27/20	49 states, NYC, DC, PR, and GU	5,018,113	476,439	9.5%	631.3
8/20/20	49 states, NYC, DC, PR, and GU	4,766,825	442,785	9.3%	583.2
8/13/20	49 states, NYC, DC, PR, and GU <sup>~</sup>	4,486,830	406,109	9.1%	538.1
8/6/20	49 states, NYC, DC, PR, and GU	4,159,947	380,174	9.1%	500.7

\* Note: Data represent cumulative counts since states began reporting; All data reported by state/local health departments are preliminary and subject to change

^ Unknown: number of children infected but not tested and confirmed

# As of 10/1/20, MO changed definition of child case from 0-19 to 0-17 years, resulting in a downward revision of cumulative child cases

~ As of 8/13/20, AL changed definition of child case from 0-24 to 0-17 years, resulting in a downward revision of cumulative child cases

## Appendix Table 2A, cont.: Summary of Child Case Data from 4/16/20 – 10/7/21\*

Date	Number of locations reporting age	Cumulative total cases (all ages)	Cumulative child cases^	Percent children of total cases	Cases per 100,000 children
7/30/20	49 states, NYC, DC, PR, and GU	3,835,573	338,982	8.8%	446.5
7/23/20	49 states, NYC, DC, PR, and GU	3,416,630	288,287	8.4%	379.7
7/16/20	49 states, NYC, DC, PR, and GU	3,042,413	241,904	8.0%	318.6
7/9/20	49 states, NYC, DC, PR, and GU	2,651,066	200,184	7.6%	263.7
7/2/20	49 states, NYC, DC, PR, and GU	2,335,060	165,845	7.1%	218.4
6/25/20	49 states, NYC, DC, PR, and GU	2,073,387	138,213	6.7%	182.0
6/18/20	49 states, NYC, DC, PR, and GU	1,885,905	116,176	6.2%	153.0
6/11/20	49 states, NYC, DC, PR, and GU	1,750,240	98,246	5.6%	129.4
6/4/20	49 states, NYC, DC, PR, and GU	1,623,334	84,016	5.2%	110.7
5/28/20	47 states, NYC, DC, PR, and GU	1,425,154	66,513	4.7%	91.5
5/21/20	47 states, NYC, DC, PR, and GU	1,288,305	54,031	4.2%	74.4
5/14/20	47 states, NYC, DC, PR, and GU	1,159,407	42,370	3.7%	58.3
5/7/20	46 states, NYC, DC, PR, and GU	1,010,112	32,568	3.2%	45.0
4/30/20	47 states, NYC, DC, and PR	849,615	23,096	2.7%	31.8
4/23/20	48 states, NYC, DC, PR, and GU	710,953	15,911	2.2%	21.2
4/16/20	46 states, NYC, and DC	456,923	9,259	2.0%	13.3

\* Note: Data represent cumulative counts since states began reporting; All data reported by state/local health departments are preliminary and subject to change

^ Unknown: number of children infected but not tested and confirmed

Appendix Table 2B: Summary of Child Hospitalization Data from 5/21/20 –10/7/21\*

Date	Number of locations reporting age distribution of hospitalizations	Cumulative total hospitalizations (all ages)	Cumulative child hospitalizations	Percent children of total hospitalizations	Hospitalization rate^
10/7/21	24 states and NYC	913,199	23,071	2.5%	0.8%
9/30/21	24 states and NYC	897,902	22,429	2.5%	0.9%
9/23/21	24 states and NYC*	882,073	21,814	2.5%	0.9%
9/16/21	24 states and NYC▲	866,215	21,081	2.4%	0.9%
9/9/21	24 states and NYC♦◇	849,324	20,436	2.4%	0.9%
9/2/21	24 states and NYC♦	833,528	19,940	2.4%	0.9%
8/26/21	24 states and NYC*•≠▲	812,130	19,082	2.3%	0.9%
8/19/21	23 states and NYC○	784,760	18,315	2.3%	0.9%
8/12/21	23 states and NYC	773,236	17,865	2.3%	0.9%
8/5/21	23 states and NYC	763,149	17,413	2.3%	0.9%
7/29/21	23 states and NYC□Δ	753,956	17,059	2.3%	0.9%
7/22/21	23 states and NYC○Δ	747,858	16,878	2.3%	0.9%
7/15/21	23 states and NYC○Δ	743,863	16,756	2.3%	0.9%
7/8/21	23 states and NYC○±	740,371	16,623	2.2%	0.9%

\* Note: Data represent cumulative counts since states began reporting; All data reported by state/local health departments are preliminary and subject to change  
For additional information on US child hospitalizations from the CDC, visit <https://covid.cdc.gov/covid-data-tracker/#new-hospital-admissions>

^ Hospitalization rate = number of child hospitalizations / number of child cases

× On 8/26/21 and 9/23/21, CO revised hospitalization data, resulting in a downward revision of cumulative child hospitalizations

▲ As of 8/26/21, NM began reporting hospitalization data by age; On 9/16/21, NM revised hospitalization data resulting in a downward revisions of child hospitalizations and cumulative hospitalizations for all ages

♦ On 9/2/21, due to available data, WA cumulative child hospitalizations increased by 22%; On 9/9/21, WA revised hospitalization data, resulting in a downward revision of cumulative child hospitalizations

◇ On 9/9/21, SC revised hospitalization data, resulting in a downward revision of cumulative child hospitalizations

● On 8/26/21, NH revised hospitalization data, resulting in a downward revision of cumulative child hospitalizations

≠ On 8/26/21, NJ revised hospitalization data, resulting in a downward revision of cumulative child hospitalizations and cumulative hospitalizations for all ages

○ On 7/1/21, 7/8/21, 7/15/21, 7/22/21, and 8/19/21, SD revised hospitalization data, resulting in a downward revision of cumulative child hospitalizations and cumulative hospitalizations for all ages

□ On 7/29/21, RI revised hospitalization data, resulting in a downward revision of cumulative child hospitalizations

Δ On 7/15/21, 7/22/21 and 7/29/21, AZ revised data resulting in a downward revision of cumulative child hospitalizations

± On 7/8/21, GA revised hospitalization data, resulting in a downward revision of cumulative child hospitalizations

# Appendix Table 2B, cont.: Summary of Child Hospitalization Data from 5/21/20 –10/7/21\*

Date	Number of locations reporting age distribution of hospitalizations	Cumulative total hospitalizations (all ages)	Cumulative child hospitalizations	Percent children of total hospitalizations	Hospitalization rate^
7/1/21	23 states and NYC ~○△	737,706	16,520	2.2%	0.9%
6/24/21	23 states and NYC○#	728,647	15,783	2.2%	0.9%
6/17/21	23 states and NYC○□†	819,143	16,997	2.1%	0.9%
6/10/21	24 states and NYC○	817,386	16,958	2.1%	0.9%
6/3/21	24 states and NYC○	813,351	16,822	2.1%	0.8%
5/27/21	24 states and NYC	800,302	16,525	2.1%	0.8%
5/20/21	24 states and NYC	793,175	16,261	2.1%	0.8%
5/13/21	24 states and NYC	786,279	16,013	2.0%	0.8%
5/6/21	24 states and NYC	778,080	15,740	2.0%	0.8%
4/29/21	24 states and NYC	768,506	15,456	2.0%	0.8%
4/22/21	24 states and NYC	759,280	15,187	2.0%	0.8%
4/15/21	24 states and NYC~	749,202	14,849	2.0%	0.8%

\* Note: Data represent cumulative counts since states began reporting; All data reported by state/local health departments are preliminary and subject to change

^ Hospitalization rate = number of child hospitalizations / number of child cases

~ On 4/15/21, NE revised hospitalization data, resulting in a downward revision of cumulative hospitalizations for all ages; As of 6/30/21, NE COVID-19 dashboard is no longer available; NE cumulative hospitalizations through 6/24/21

○ On 6/3/21, 6/10/21, 6/17/21, 6/24/21, 7/1/21, 7/8/21, 7/15/21, 7/22/21, and 8/19/21, SD revised hospitalization data, resulting in a downward revision of cumulative child hospitalizations and cumulative hospitalizations for all ages

△ On 7/1/21, AZ revised data resulting in a 33% increase in cumulative child hospitalizations (592 hospitalizations added);

# On 6/24/21, FL stopped reporting hospitalization data, resulting in a downward revision of cumulative child hospitalizations and cumulative hospitalizations for all ages

□ On 6/17/21, RI revised hospitalization data, resulting in a downward revision of cumulative child hospitalizations and a downward revision of cumulative hospitalizations for all ages

† On 6/17/21, VA revised hospitalization data resulting in a downward revision of cumulative child hospitalizations

Appendix Table 2B, cont.: Summary of Child Hospitalization Data from 5/21/20 – 10/7/21\*

Date~	Number of locations reporting age distribution of hospitalizations	Cumulative total hospitalizations (all ages)	Cumulative child hospitalizations	Percent children of total hospitalizations	Hospitalization rate^
4/8/21	24 states and NYC	738,793	14,489	2.0%	0.8%
4/1/21	24 states and NYC	722,365	14,179	2.0%	0.8%
3/25/21	24 states and NYC	713,236	13,953	2.0%	0.8%
3/18/21	24 states and NYC	699,071	13,540	1.9%	0.8%
3/11/21	24 states and NYC	690,206	13,283	1.9%	0.8%
3/4/21	23 states and NYC#	656,757	12,531	1.9%	0.8%
2/25/21	24 states and NYC	665,821	12,630	1.9%	0.8%
2/18/21	24 states and NYC	652,528	12,329	1.9%	0.8%
2/11/21	24 states and NYC	639,318	11,960	1.9%	0.8%
2/4/21	24 states and NYC	623,006	11,585	1.9%	0.8%
1/28/21	24 states and NYC	605,509	11,192	1.8%	0.8%
1/21/21	24 states and NYC	581,897	10,660	1.8%	0.8%
1/14/21	24 states and NYC	560,125	10,182	1.8%	0.8%
1/7/21	24 states and NYC	533,910	9,661	1.8%	0.9%
12/31/20	24 states and NYC	510,384	9,259	1.8%	0.9%
12/17/20	24 states and NYC	468,643	8,411	1.8%	0.9%
12/10/20	24 states and NYC	445,394	7,913	1.8%	0.9%
12/3/20	24 states and NYC	421,766	7,515	1.8%	1.0%
11/19/20	24 states and NYC	381,141	6,716	1.8%	1.1%

\* Note: Data represent cumulative counts since states began reporting; All data reported by state/local health departments are preliminary and subject to change  
~ Data from weeks ending 11/26/20 and 12/24/20 are not included

^ Hospitalization rate = number of child hospitalizations / number of child cases

# On 3/4/21, SC not included due to incomplete data, resulting in a downward revision of cumulative hospitalizations for all ages

# Appendix Table 2B, cont.: Summary of Child Hospitalization Data from 5/21/20 – 10/7/21\*

Date	Number of locations reporting age distribution of hospitalizations	Cumulative total hospitalizations (all ages)	Cumulative child hospitalizations	Percent children of total hospitalizations	Hospitalization rate^
11/12/20	23 states and NYC	362,453	6,337	1.7%	1.2%
11/5/20	24 states and NYC	360,724	6,172	1.7%	1.3%
10/29/20	24 states and NYC	348,296	5,899	1.7%	1.3%
10/22/20	24 states and NYC	324,720	5,585	1.7%	1.3%
10/15/20	24 states and NYC	314,715	5,353	1.7%	1.4%
10/8/20	25 states and NYC#	307,135	5,211	1.7%	1.4%
10/1/20	25 states and NYC	302,896	5,340	1.8%	1.6%
9/24/20	25 states and NYC	294,901	5,164	1.8%	1.7%
9/17/20	25 states and NYC	288,345	5,016	1.7%	1.6%
9/10/20	24 states and NYC	270,034	4,677	1.7%	1.8%
9/3/20	23 states and NYC	257,300	4,321	1.7%	1.9%
8/27/20	22 states and NYC	243,056	4,163	1.7%	2.1%
8/20/20	21 states and NYC	234,810	4,062	1.7%	2.2%

\* Note: Data represent cumulative counts since states began reporting; All data reported by state/local health departments are preliminary and subject to change

^ Hospitalization rate = number of child hospitalizations / number of child cases

# On 10/8/20, AZ revised hospitalization data, resulting in a downward revision of cumulative child hospitalizations

# Appendix Table 2B, cont.: Summary of Child Hospitalization Data from 5/21/20 – 10/7/21\*

Date	Number of locations reporting age distribution of hospitalizations	Cumulative total hospitalizations (all ages)	Cumulative child hospitalizations	Percent children of total hospitalizations	Hospitalization rate^
8/13/20	21 states and NYC	225,893	3,849	1.7%	2.2%
8/6/20	20 states and NYC	206,189	3,276	1.6%	2.2%
7/30/20	20 states and NYC	195,106	2,669	1.4%	2.0%
7/23/20	20 states and NYC	181,345	2,304	1.3%	2.0%
7/16/20	20 states and NYC	172,787	2,074	1.2%	2.1%
7/9/20	20 states and NYC	164,158	1,948	1.2%	2.4%
7/2/20	20 states and NYC	156,640	1,780	1.1%	2.6%
6/25/20	20 states and NYC	151,583	1,663	1.1%	2.9%
6/18/20	19 states and NYC	140,215	1,433	1.0%	3.2%
6/11/20	19 states and NYC	134,600	1,322	1.0%	3.4%
6/4/20	19 states and NYC	128,779	1,231	1.0%	3.4%
5/28/20	16 states and NYC	114,678	1,054	0.9%	3.8%
5/21/20	17 states and NYC	105,665	891	0.8%	3.8%

\* Note: Data represent cumulative counts since states began reporting; All data reported by state/local health departments are preliminary and subject to change

^ Hospitalization rate = number of child hospitalizations / number of child cases



## Appendix Table 2C: Summary of Child Mortality Data from 5/21/20 – 10/7/21\*

Date	Number of locations reporting age distribution of deaths	Cumulative total deaths (all ages)	Cumulative child deaths	Percent children of total deaths	Percent of child cases resulting in death^
10/7/21	45 states, NYC, PR and GU	635,604	542	0.09%	0.01%
9/30/21	45 states, NYC, PR and GU	624,153	520	0.08%	0.01%
9/23/21	45 states, NYC, PR and GU	611,477	498	0.08%	0.01%
9/16/21	45 states, NYC, PR and GU	598,85	480	0.08%	0.01%
9/9/21	45 states, NYC, PR and GU	586,537	460	0.08%	0.01%
9/2/21	45 states, NYC, PR and GU	576,583	444	0.08%	0.01%
8/26/21	45 states, NYC, PR and GU <sup>▲</sup> ≠	567,949	425	0.07%	0.01%
8/19/21	44 states, NYC, PR and GU <sup>×</sup> ≠	556,231	402	0.07%	0.01%
8/12/21	43 states, NYC, PR and GU <sup>Δ</sup>	540,918	378	0.07%	0.01%
8/5/21	43 states, NYC, PR and GU <sup>#</sup> ~	537,846	371	0.07%	0.01%
7/29/21	43 states, NYC, PR and GU	528,896	358	0.07%	0.01%
7/22/21	43 states, NYC, PR and GU	527,019	349	0.07%	0.01%
7/15/21	43 states, NYC, PR and GU	525,470	346	0.07%	0.01%
7/8/21	43 states, NYC, PR and GU	523,848	344	0.07%	0.01%
7/1/21	43 states, NYC, PR and GU <sup>○</sup> ~	522,380	335	0.06%	0.01%

\* Note: Data represent cumulative counts since states began reporting; All data reported by state/local health departments are preliminary and subject to change; For additional information on US child mortality from the CDC, visit <https://covid.cdc.gov/covid-data-tracker/#demographics>

^ Number of child deaths / number of child cases

▲ As of 8/26/21, NM began reporting mortality data by age

≠ On 8/19/21 and 8/26/21, cumulative total deaths for all ages adjusted due to different available mortality measure for CO

× As of 8/19/21, SC began reporting mortality data by age

Δ On 8/12/21, CA revised mortality data resulting in a downward revision of cumulative deaths for all ages

# On 8/5/21, due to available data and changes made to dashboard, definition of LA total cumulative deaths changed

~ On 7/1/21, AL revised mortality data, resulting in a downward revision of cumulative child deaths; As of 8/5/21, due to available data and changes made to dashboard, AL cumulative deaths through 7/29/21  
○ On 5/20/21, NE revised mortality data, resulting in a downward revision of cumulative deaths for all ages; As of 6/30/21, NE COVID-19 dashboard is no longer available; NE cumulative deaths through 6/24/21

## Appendix Table 2C, cont.: Summary of Child Mortality Data from 5/21/20 – 10/7/21\*

Date	Number of locations reporting age distribution of deaths	Cumulative total deaths (all ages)	Cumulative child deaths	Percent children of total deaths	Percent of child cases resulting in death^
6/24/21	43 states, NYC, PR and GU	520,660	336	0.06%	0.01%
6/17/21	42 states, NYC, PR and GU	518,016	335	0.06%	0.01%
6/10/21	43 states, NYC, PR and GU <sup>□</sup>	516,663	330	0.06%	0.01%
6/3/21	43 states, NYC, PR and GU	514,325	327	0.06%	0.01%
5/27/21	43 states, NYC, PR and GU	511,346	322	0.06%	0.01%
5/20/21	43 states, NYC, PR and GU <sup>○</sup>	507,373	316	0.06%	0.01%
5/13/21	43 states, NYC, PR and GU	503,900	308	0.06%	0.01%
5/6/21	43 states, NYC, PR and GU	500,262	306	0.06%	0.01%
4/29/21	43 states, NYC, PR and GU	496,248	303	0.06%	0.01%
4/22/21	43 states, NYC, PR and GU	492,057	296	0.06%	0.01%
4/15/21	43 states, NYC, PR and GU	487,881	297	0.06%	0.01%

\* Note: Data represent cumulative counts since states began reporting; All data reported by state/local health departments are preliminary and subject to change;

□ On 6/10/21, WA revised mortality data, resulting in a downward revision of cumulative deaths for all ages

○ On 5/20/21, NE revised mortality data, resulting in a downward revision of cumulative deaths for all ages; As of 6/30/21, NE COVID-19 dashboard is no longer available

## Appendix Table 2C, cont.: Summary of Child Mortality Data from 5/21/20 – 10/7/21\*

Date	Number of locations reporting age distribution of deaths	Cumulative total deaths (all ages)	Cumulative child deaths	Percent children of total deaths	Percent of child cases resulting in death^
4/8/21	43 states, NYC, PR and GU	483,378	292	0.06%	0.01%
4/1/21	43 states, NYC, PR and GU	476,994	284	0.06%	0.01%
3/25/21	43 states, NYC, PR and GU <sup>○</sup>	471,104	279	0.06%	0.01%
3/18/21	43 states, NYC, PR and GU <sup>□</sup>	464,201	268	0.06%	0.01%
3/11/21	43 states, NYC, PR and GU	457,061	266	0.06%	0.01%
3/4/21	43 states, NYC, and GU <sup>#</sup>	444,878	253	0.06%	0.01%
2/25/21	43 states, NYC, and GU	438,657	256	0.06%	0.01%
2/18/21	43 states, NYC, and GU	425,350	247	0.06%	0.01%
2/11/21	43 states, NYC, and GU	407,222	241	0.06%	0.01%
2/4/21	43 states, NYC, and GU	388,204	227	0.06%	0.01%
1/28/21	43 states, NYC, and GU	369,149	215	0.06%	0.01%
1/21/21	43 states, NYC, and GU	348,860	205	0.06%	0.01%
1/14/21	43 states and NYC	330,261	191	0.06%	0.01%
1/7/21	42 states and NYC	297,914	188	0.06%	0.01%

\* Note: Data represent cumulative counts since states began reporting; All data reported by state/local health departments are preliminary and subject to change

^ Number of child deaths / number of child cases

○ On 3/25/21, VA revised mortality data, resulting in a downward revision of cumulative deaths for all ages

□ On 3/18/21, KS revised mortality data, resulting in a downward revision of cumulative deaths for all ages

# On 3/4/21, OH revised mortality data, resulting in a downward revision of cumulative deaths for all ages

## Appendix Table 2C, cont.: Summary of Child Mortality Data from 5/21/20 – 10/7/21\*

Date~	Number of locations reporting age distribution of deaths	Cumulative total deaths (all ages)	Cumulative child deaths	Percent children of total deaths	Percent of child cases resulting in death^
12/31/20	43 states and NYC	294,443	179	0.06%	0.01%
12/17/20	42 states and NYC	263,833	172	0.07%	0.01%
12/10/20	42 states and NYC	249,442	162	0.06%	0.01%
12/3/20	43 states and NYC	236,996	154	0.06%	0.01%
11/19/20	43 states and NYC	218,007	138	0.06%	0.01%
11/12/20	42 states and NYC	210,441	133	0.06%	0.01%
11/5/20	42 states and NYC	199,564	123	0.06%	0.01%
10/29/20	42 states and NYC	194,175	121	0.06%	0.02%
10/22/20	42 states and NYC	189,250	120	0.06%	0.02%
10/15/20	42 states and NYC	184,294	120	0.07%	0.02%
10/8/20	42 states and NYC	180,014	115	0.06%	0.02%
10/1/20	42 states and NYC	175,423	112	0.06%	0.02%
9/24/20	42 states and NYC	170,971	109	0.06%	0.02%
9/17/20	42 states and NYC	167,019	109	0.07%	0.02%
9/10/20	42 states and NYC	160,856	105	0.07%	0.02%
9/3/20	42 states and NYC	156,053	103	0.07%	0.02%

\* Note: Data represent cumulative counts since states began reporting; All data reported by state/local health departments are preliminary and subject to change

~ Data from weeks ending 11/26/20 and 12/24/20 are not included

^ Number of child deaths / number of child cases

## Appendix Table 2C, cont.: Summary of Child Mortality Data from 5/21/20 – 10/7/21\*

Date	Number of locations reporting age distribution of deaths	Cumulative total deaths (all ages)	Cumulative child deaths	Percent children of total deaths	Percent of child cases resulting in death^
8/27/20	43 states and NYC <sup>#</sup>	152,884	101	0.07%	0.02%
8/20/20	45 states and NYC	154,279	92	0.06%	0.02%
8/13/20	45 states and NYC	147,356	90	0.06%	0.02%
8/6/20	44 states and NYC	139,685	90	0.06%	0.02%
7/30/20	44 states and NYC	133,267	86	0.06%	0.03%
7/23/20	44 states and NYC	121,539	76	0.06%	0.03%
7/16/20	43 states and NYC	119,265	66	0.06%	0.03%
7/9/20	42 states and NYC	112,289	62	0.06%	0.03%
7/2/20	42 states and NYC	108,513	58	0.05%	0.04%
6/25/20	42 states and NYC	104,683	57	0.05%	0.04%
6/18/20	42 states and NYC	101,056	54	0.05%	0.05%
6/11/20	40 states and NYC	89,866	48	0.05%	0.05%
6/4/20	40 states and NYC	91,241	46	0.05%	0.06%
5/28/20	39 states and NYC	82,298	30	0.04%	0.05%
5/21/20	38 states and NYC	71,689	28	0.04%	0.06%

\* Note: Data represent cumulative counts since states began reporting; All data reported by state/local health departments are preliminary and subject to change

^ Number of child deaths / number of child cases

# As of 8/27/20, RI, MI, and SC not reporting age distributions of COVID-19 deaths (exact numbers not provided for <5 deaths); mortality data from those states excluded

# Appendix Table 3A: Child COVID-19 Case Data Available on 10/7/21\*



Click location name to view original data source

Location	Age range	Child population, 2019	Cumulative child cases	Percent children of total cases	Cumulative total cases (all ages)	Cases per 100,000 children
<a href="#">Alabama<sup>^</sup></a>	0-17	1,088,668	53,350	12.1%	442,373	4900.5
<a href="#">Alaska</a>	0-19	196,852	27,404	23.9%	114,708	13921.1
<a href="#">Arizona</a>	0-19	1,838,598	209,423	18.9%	1,108,830	11390.4
<a href="#">Arkansas</a>	0-17	700,155	86,418	17.3%	499,886	12342.7
<a href="#">California</a>	0-17	8,894,641	663,114	14.6%	4,529,563	7455.2
<a href="#">Colorado<sup>o</sup></a>	0-19	1,407,971	124,470	18.2%	682,773	8840.3
<a href="#">Connecticut</a>	0-19	735,193	74,535	19.0%	392,951	10138.2
<a href="#">Delaware</a>	0-17	203,572	23,118	17.0%	135,695	11356.2
<a href="#">District of Columbia</a>	0-19	149,337	10,579	17.1%	61,978	7084.0
<a href="#">Florida<sup>*</sup></a>	0-14	3,512,139	433,632	12.1%	3,576,571	12346.7
<a href="#">Georgia</a>	0-17	2,503,881	186,824	15.1%	1,234,672	7461.4
<a href="#">Guam</a>	0-19	57,727	3,215	21.2%	15,168	5569.3
<a href="#">Hawaii</a>	0-17	299,868	14,241	18.2%	78,125	4749.1
<a href="#">Idaho</a>	0-17	448,201	34,208	12.9%	264,661	7632.3
<a href="#">Illinois</a>	0-19	3,145,309	296,594	18.0%	1,643,993	9429.7
<a href="#">Indiana</a>	0-19	1,755,070	175,531	18.0%	976,802	10001.4
<a href="#">Iowa<sup>□</sup></a>	0-17	726,841	64,368	12.9%	498,638	8855.9
<a href="#">Kansas</a>	0-17	700,250	64,512	15.5%	415,431	9212.7
<a href="#">Kentucky</a>	0-19	1,118,934	140,937	20.0%	705,626	12595.6
<a href="#">Louisiana<sup>*</sup></a>	0-17	1,087,630	118,404	15.9%	745,571	10886.4
<a href="#">Maine</a>	0-19	281,158	19,230	20.5%	93,881	6839.6
<a href="#">Maryland</a>	0-19	1,489,721	95,443	17.7%	540,451	6406.8
<a href="#">Massachusetts<sup>#</sup></a>	0-19	1,558,231	106,338	14.0%	759,392	6824.3
<a href="#">Michigan</a>	0-19	2,407,690	209,116	17.7%	1,178,908	8685.3
<a href="#">Minnesota</a>	0-19	1,445,346	146,350	20.1%	729,334	10125.6
<a href="#">Mississippi</a>	0-17	698,583	85,386	17.3%	493,670	12222.7
<a href="#">Missouri<sup>†</sup></a>	0-17	1,370,585	88,722	13.0%	684,268	6473.3

\* Note: Data represent cumulative counts since states began reporting; All data reported by state/local health departments are preliminary and subject to change

<sup>^</sup> As of 8/13/20, AL changed definition of child case from 0-24 to 0-17 years; As of 8/5/21, due to available data and changes made to dashboard, AL cumulative cases through 7/29/21

<sup>o</sup> On 6/24/21, due to available CO data and calculation required to obtain child total, there is a downward revision of cumulative child cases

• As of 6/24/21, due to change in available data for FL, calculation required to obtain child cases data for 0-14 years

□ On 7/15/21, IA revised case data, resulting in a downward revision of cumulative child cases

× On 8/5/21, due to available data and changes made to dashboard, definition of LA total cumulative cases changed

# As of 9/3/20, MA changed reporting from total child cases to cases added in last two weeks; 10/7/21 totals calculated using MA Dept. of Public Health COVID-19 Dashboard published 10/7/21 (data from 9/19/21-10/2/21) and 9/16/21 version of this report;

For several weeks in 2021 (2/18, 3/11, 6/3, 6/10, 6/24, 7/1, 7/15, 7/22, 8/5, 8/26, 9/16, & 10/7), due to available data and calculations required to obtain child cases, there is a downward revision of cumulative child cases for MA; On 10/7/21 there were 871 fewer cumulative child cases

† As of 10/1/20, MO changed definition of child case from 0-19 to 0-17 years

# Appendix Table 3B: Child COVID-19 Case Data Available on 10/7/21\*



Click location name to view original data source

Location	Age range	Child population, 2019	Cumulative child cases	Percent children of total cases	Cumulative total cases (all ages)	Cases per 100,000 children
<a href="#">Montana</a>	0-19	254,416	27,323	17.4%	157,372	10739.5
<a href="#">Nebraska</a> <sup>~</sup>	0-19	760,272	35,425	15.8%	224,206	4659.5
<a href="#">Nevada</a>	0-19	688,997	66,299	15.6%	424,995	9622.6
<a href="#">New Hampshire</a>	0-19	291,038	24,270	19.7%	122,934	8339.1
<a href="#">New Jersey</a>	0-17	1,938,578	134,039	13.2%	1,011,758	6914.3
<a href="#">New Mexico</a>	0-19	531,712	51,262	20.0%	256,947	9640.9
<a href="#">North Carolina</a>	0-17	2,300,715	223,446	15.7%	1,420,984	9712.0
<a href="#">North Dakota</a>	0-19	200,777	26,535	19.4%	136,433	13216.2
<a href="#">NYC</a>	0-17	1,726,900	108,785	12.1%	896,048	6299.4
<a href="#">Ohio</a>	0-19	2,886,873	238,854	16.5%	1,445,786	8273.8
<a href="#">Oklahoma</a>	0-17	952,238	98,226	15.9%	619,056	10315.3
<a href="#">Oregon</a>	0-19	965,480	61,058	18.1%	338,130	6324.1
<a href="#">Pennsylvania</a>	0-19	2,801,187	241,520	16.5%	1,464,264	8622.1
<a href="#">Puerto Rico</a> <sup>□</sup>	0-19	594,011	27,447	15.1%	182,144	4620.6
<a href="#">Rhode Island</a> <sup>○</sup>	0-18	220,525	27,076	16.6%	162,683	12278.0
<a href="#">South Carolina</a>	0-20	1,314,988	201,435	23.1%	872,011	15318.4
<a href="#">South Dakota</a>	0-19	240,567	25,714	17.4%	147,469	10688.9
<a href="#">Tennessee</a>	0-20	1,762,659	280,479	22.5%	1,244,366	15912.3
<a href="#">Texas</a> <sup>^</sup>	0-19	8,210,585	7,754	7.8%	99,989	--
<a href="#">Utah</a>	0-14	774,764	63,967	12.3%	518,553	8256.3
<a href="#">Vermont</a>	0-19	134,415	8,434	24.2%	34,923	6274.6
<a href="#">Virginia</a>	0-19	2,087,426	159,150	18.0%	885,323	7624.2
<a href="#">Washington</a>	0-19	1,840,306	131,702	19.6%	672,782	7156.5
<a href="#">West Virginia</a> <sup>Δ</sup>	0-20	402,473	55,002	22.1%	249,331	13666.1
<a href="#">Wisconsin</a>	0-19	1,422,095	154,430	18.6%	831,493	10859.3
<a href="#">Wyoming</a> <sup>#</sup>	0-18	140,694	12,277	16.3%	75,265	8726.0

\* Note: Data represent cumulative counts since states began reporting; All data reported by state/local health departments are preliminary and subject to change

~ As of 6/30/21, NE COVID-19 dashboard is no longer available; NE cumulative cases through 6/24/21

□ On 3/11/21, due to only PR data available and calculation required to obtain child total, there is a downward revision of cumulative child cases

○ On 4/1/21 and 4/29/21, RI revised case data, resulting in downward revision of cumulative cases; On 5/6/21, due to data revision and lag in reporting, RI experienced 30% increase in child cases (4,906 cases added)

^ Texas reported age for only 3% of total confirmed cases; Cases per 100,000 children omitted for Texas; Data for Texas in this report is limited to the case count for which age is provided;

on 8/26/21, after not updating demographic case data since 7/22/21, TX added 2,147 child cases

Δ As of 8/19/21, WV changed definition of child case from 0-19 to 0-20 years; the cumulative results in this report represent the 0-20 age category

# On 2/18/21, 4/29/21, and 5/20/21, WY revised case data, resulting in a downward revision of cumulative child cases



# Appendix Table 4: Child Testing Data Available on 10/7/21\*

## COVID-19 Testing and Children

Location	Age range	Cumulative total tests (all ages)	Cumulative child tests	Percent children of total tests	Positive rate^
<a href="#">Arizona</a>	0-19	5,503,791	1,150,305	20.9%	18.2%
<a href="#">Illinois</a>	0-19	32,629,332	5,197,679	15.9%	5.7%
<a href="#">Indiana</a>	0-19	13,745,787	3,052,939	22.2%	5.7%
<a href="#">Iowa</a> <sup>○</sup>	0-17	2,143,750	128,625	6.0%	--
<a href="#">Minnesota</a> <sup>~</sup>	0-19	12,523,839	2,091,795	16.7%	7.0%
<a href="#">Nevada</a>	0-19	4,979,130	831,515	16.7%	8.0%
<a href="#">New Hampshire</a>	0-19	2,473,538	476,571	19.3%	5.1%
<a href="#">Rhode Island</a>	0-18	988,925	200,726	20.3%	13.5%
<a href="#">Tennessee</a>	0-20	10,002,825	2,052,166	20.5%	13.7%
<a href="#">West Virginia</a> <sup>□</sup>	0-20	3,956,349	613,234	15.5%	9.0%
<a href="#">Wyoming</a> <sup>#</sup>	0-18	1,002,732	116,217	11.6%	10.6%

\* Note: Data represent cumulative counts since states began reporting; All data reported by state/local health departments are preliminary and subject to change

^ Positive rate = number of child cases / number of child tests

○ On 5/20/21, 5/27/21, 6/3/21, 6/10/21, 6/17/21, 6/24/21, 7/1/21, and 7/8/21, IA revised testing data, resulting in a downward revision of cumulative tests for all ages; On 7/15/21, IA stopped updating child testing data; IA cumulative tests through 7/8/21

~ On 6/3/21, MN revised testing data, resulting in a downward revision of cumulative child tests; On 6/10/21, MN revised testing data, resulting in a downward revision of cumulative tests for all ages

□ On 6/17/21, WV revised testing data, resulting in a downward revision of cumulative child tests and cumulative tests for all ages; As of 8/19/21 WV changed definition of child case from 0-19 to 0-20

# On 2/11/21 and 3/18/21, WY revised testing data, resulting in a downward revision of cumulative tests for all ages

# Appendix Table 5A: Child Hospitalization Data Available on 10/7/21\*

## COVID-19-Associated Hospitalizations and Children

Location	Age range	Cumulative child hospitalizations	Cumulative total hospitalizations (all ages)	Percent children of total hospitalizations	Hospitalization rate^
<a href="#">Alaska</a>	0-19	55	2,495	2.2%	0.2%
<a href="#">Arizona<sup>#</sup></a>	0-19	2,896	77,760	3.7%	1.4%
<a href="#">Colorado<sup>♦</sup></a>	0-19	1,239	39,214	3.2%	1.0%
<a href="#">Georgia<sup>±</sup></a>	0-17	2,057	82,092	2.5%	1.1%
<a href="#">Hawaii</a>	0-17	162	3,858	4.2%	1.1%
<a href="#">Idaho</a>	0-17	232	11,515	2.0%	0.7%
<a href="#">Indiana</a>	0-19	1,690	79,299	2.1%	1.0%
<a href="#">Kansas</a>	0-17	280	14,086	2.0%	0.4%
<a href="#">Minnesota</a>	0-19	1,359	38,791	3.5%	0.9%
<a href="#">Mississippi</a>	0-17	243	12,008	2.0%	0.3%
<a href="#">Nebraska<sup>~</sup></a>	0-19	131	6,891	1.9%	0.4%
<a href="#">New Hampshire<sup>•</sup></a>	0-19	32	1,786	1.8%	0.1%

\* Note: Data represent cumulative counts since states began reporting; All data reported by state/local health departments are preliminary and subject to change

^ Hospitalization rate = number of child hospitalizations / number of child cases

# On 10/8/20, 7/15/21, 7/22/21 and 7/29/21, AZ revised data, resulting in a downward revision of cumulative child hospitalizations; On 7/1/21, AZ revised data resulting in a 33% increase in cumulative child hospitalizations (592 added)

♦ On 8/26/21, CO revised hospitalization data, resulting in a downward revision of cumulative child hospitalizations

± On 7/8/21, GA revised hospitalization data, resulting in a downward revision of cumulative child hospitalizations

~ On 4/15/21, NE revised hospitalization data, resulting in a downward revision of cumulative hospitalizations for all ages; As of 6/30/21, NE COVID-19 dashboard is no longer available; NE cumulative hospitalizations through 6/24/21

• On 8/26/21, NH revised hospitalization data, resulting in a downward revision of cumulative child hospitalizations

# Appendix Table 5B: Child Hospitalization Data Available on 10/7/21\*

## COVID-19-Associated Hospitalizations and Children

Location	Age range	Cumulative child hospitalizations	Cumulative total hospitalizations (all ages)	Percent children of total hospitalizations	Hospitalization rate^
<a href="#">New Jersey</a> <sup>‡</sup>	0-17	1,498	92,340	1.6%	1.1%
<a href="#">New Mexico</a> <sup>×</sup>	0-17	281	17,315	--	--
<a href="#">NYC</a>	0-17	2,135	120,155	1.8%	2.0%
<a href="#">Ohio</a>	0-19	2,302	74,620	3.1%	1.0%
<a href="#">Oregon</a>	0-19	525	18,214	2.9%	0.9%
<a href="#">Rhode Island</a> <sup>□</sup>	0-18	294	11,708	2.5%	1.1%
<a href="#">South Carolina</a> <sup>◇</sup>	0-20	680	29,556	2.3%	0.3%
<a href="#">South Dakota</a> <sup>○</sup>	0-19	161	7,531	2.1%	0.6%
<a href="#">Tennessee</a>	0-20	784	35,031	2.2%	0.3%
<a href="#">Utah</a>	0-14	526	22,594	2.3%	0.8%
<a href="#">Virginia</a> <sup>†</sup>	0-19	1,090	37,162	2.9%	0.7%
<a href="#">Washington</a> <sup>▲</sup>	0-19	893	37,362	2.4%	0.7%
<a href="#">Wisconsin</a>	0-19	1,526	39,816	3.8%	1.0%

\* Note: Data represent cumulative counts since states began reporting; All data reported by state/local health departments are preliminary and subject to change

^ Hospitalization rate = number of child hospitalizations / number of child cases

‡ On 8/26/21, NJ revised hospitalization data, resulting in a downward revision of cumulative child hospitalizations and cumulative hospitalizations for all ages

× As of 8/26/21, NM began reporting hospitalizations by age; due to only data available, NM is excluded from hospitalization percentages

□ On 6/17/21 and 7/29/21, RI revised hospitalization data, resulting in a downward revision of cumulative child hospitalizations and (on 6/17/21) cumulative hospitalizations for all ages

◇ On 9/9/21, SC revised hospitalization data, resulting in a downward revision of cumulative child hospitalizations

○ On 6/3/21, 6/10/21, 6/17/21, 6/24/21, 7/1/21, 7/8/21, 7/15/21, 7/22/21, and 8/19/21, SD revised hospitalization data, resulting in a downward revision of child cumulative hospitalizations and cumulative hospitalizations for all ages

† On 6/17/21, VA revised hospitalization data resulting in a downward revision of cumulative child hospitalizations

▲ On 9/2/21, due to available data, WA cumulative child hospitalizations increased by 22% (145 hospitalizations added); On 9/9/21, WA revised hospitalization data, resulting in a downward revision of cumulative child hospitalizations

# Appendix Table 6A: Child Mortality Data Available on 10/7/21\*

## COVID-19-Associated Deaths and Children

Location	Age range	Cumulative child deaths	Cumulative total deaths (all ages)	Percent children of total deaths	Percent of child cases resulting in death^
<a href="#">Alabama</a> <sup>#</sup>	0-17	8	11,510	0.07%	0.01%
<a href="#">Alaska</a>	0-19	0	564	0.00%	0.00%
<a href="#">Arizona</a>	0-19	40	20,250	0.20%	0.02%
<a href="#">Arkansas</a>	0-17	3	7,781	0.04%	0.00%
<a href="#">California</a> <sup>Δ</sup>	0-17	37	69,351	0.05%	0.01%
<a href="#">Colorado</a> <sup>‡</sup>	0-19	20	7,665	0.26%	0.02%
<a href="#">Connecticut</a>	0-19	5	8,667	0.06%	0.01%
<a href="#">Delaware</a>	0-17	2	1,977	0.10%	0.01%
<a href="#">District of Columbia</a>	0-19	0	1,180	0.00%	0.00%
<a href="#">Florida</a>	0-15	24	55,299	0.04%	0.01%
<a href="#">Georgia</a>	0-17	17	23,077	0.07%	0.01%
<a href="#">Guam</a>	0-19	4	198	2.02%	0.12%
<a href="#">Hawaii</a>	0-17	1	813	0.12%	0.01%
<a href="#">Idaho</a>	0-17	0	3,040	0.00%	0.00%
<a href="#">Illinois</a>	0-19	26	25,153	0.10%	0.01%
<a href="#">Indiana</a>	0-19	15	15,413	0.10%	0.01%
<a href="#">Iowa</a>	0-17	3	6,654	0.05%	0.01%
<a href="#">Kansas</a> <sup>□</sup>	0-17	3	6,106	0.05%	0.00%
<a href="#">Kentucky</a>	0-19	5	8,972	0.06%	0.00%
<a href="#">Louisiana</a> <sup>○</sup>	0-17	18	14,102	0.13%	0.02%
<a href="#">Maine</a>	0-19	1	1,066	0.09%	0.01%
<a href="#">Maryland</a>	0-19	12	10,550	0.11%	0.01%
<a href="#">Massachusetts</a> <sup>~</sup>	0-19	9	18,260	0.05%	0.01%
<a href="#">Minnesota</a>	0-19	3	8,243	0.04%	0.00%

\* Note: Data represent cumulative counts since states began reporting; All data reported by state/local health departments are preliminary and subject to change;

^ Number of child deaths / number of child cases;

# As of 8/13/20, AL changed definition of child case, resulting in a downward revision of cumulative child deaths; On 7/1/21, AL revised mortality data, resulting in a downward revision of cumulative child deaths;

As of 8/5/21, due to available data and changes made to dashboard, AL cumulative deaths through 7/29/21

Δ On 8/12/21, CA revised mortality data, resulting in a downward revision of cumulative deaths for all ages

‡ On 9/2/21, CO cumulative deaths for all ages show a decrease due to different available mortality measure

□ On 3/18/21, KS revised mortality data, resulting in a downward revision of cumulative deaths for all ages

○ On 8/5/21, due to available data and changes made to dashboard, definition of LA total cumulative deaths changed

~ As of 9/3/20, MA changed reporting from total child cases to cases added in last two weeks; 10/7/21 totals calculated using MA Dept. of Public Health COVID-19 Dashboard published 10/7/21 (data from 9/19/21-10/2/21) and 9/16/21 version of this report

# Appendix Table 6B: Child Mortality Data Available on 10/7/21\*

## COVID-19-Associated Deaths and Children

Location	Age range	Cumulative child deaths	Cumulative total deaths (all ages)	Percent children of total deaths	Percent of child cases resulting in death^
<a href="#">Mississippi</a>	0-17	9	9,778	0.09%	0.01%
<a href="#">Missouri</a>	0-17	6	11,685	0.05%	0.01%
<a href="#">Nebraska<sup>o</sup></a>	0-19	4	2,259	0.18%	0.01%
<a href="#">Nevada</a>	0-19	7	7,246	0.10%	0.01%
<a href="#">New Hampshire</a>	0-19	0	1,493	0.00%	0.00%
<a href="#">New Jersey</a>	0-17	8	24,745	0.03%	0.01%
<a href="#">New Mexico<sup>±</sup></a>	0-17	4	4,840	--	--
<a href="#">North Carolina</a>	0-17	7	17,019	0.04%	0.00%
<a href="#">North Dakota</a>	0-19	1	1,634	0.06%	0.00%
<a href="#">NYC</a>	0-17	29	34,333	0.08%	0.03%
<a href="#">Ohio<sup>~</sup></a>	0-19	13	22,490	0.06%	0.01%
<a href="#">Oklahoma</a>	0-17	5	9,213	0.05%	0.01%
<a href="#">Oregon</a>	0-19	5	3,900	0.13%	0.01%
<a href="#">Pennsylvania</a>	0-19	17	29,814	0.06%	0.01%
<a href="#">Puerto Rico</a>	0-19	7	3,182	0.22%	0.03%
<a href="#">South Carolina<sup>x</sup></a>	0-20	22	12,856	0.17%	0.01%
<a href="#">South Dakota</a>	0-19	0	2,170	0.00%	0.00%
<a href="#">Tennessee</a>	0-20	23	15,446	0.15%	0.01%
<a href="#">Texas<sup>#</sup></a>	0-19	88	64,304	0.14%	--
<a href="#">Vermont</a>	0-19	0	328	0.00%	0.00%
<a href="#">Virginia<sup>□</sup></a>	0-19	13	13,031	0.10%	0.01%
<a href="#">Washington<sup>†</sup></a>	0-19	13	7,917	0.16%	0.01%
<a href="#">Wisconsin</a>	0-19	4	8,989	0.04%	0.00%
<a href="#">Wyoming</a>	0-18	0	1,041	0.00%	0.00%

\* Note: Data represent cumulative counts since states began reporting; All data reported by state/local health departments are preliminary and subject to change; ^ Number of child deaths / number of child cases

○ On 5/20/21, NE revised mortality data, resulting in a downward revision of cumulative deaths for all ages; As of 6/30/21, NE COVID-19 dashboard is no longer available; NE cumulative deaths through 6/24/21

± As of 8/26/21, NM began reporting mortality data by age; due to only available data, NM is excluded from mortality data percentages

~ On 3/4/21, OH revised mortality data, resulting in a downward revision of cumulative deaths for all ages

x As of 8/19/21, SC began reporting mortality data by age

# As of 7/30/20, Texas provided age distribution for all COVID-19-associated deaths; Texas reported age for only 3% of total confirmed cases

Percent of child cases resulting in death omitted for Texas; Data for Texas in this report is limited to the case count for which age is provided

□ On 3/25/21, VA revised mortality data, resulting in a downward revision of cumulative deaths for all ages

† On 6/10/21, WA revised mortality data, resulting in a downward revision of cumulative deaths for all ages

# Frequently Asked Questions

**Q:** *Why are the AAP and CHA collecting this data?*

**A:** Our goal is to provide a weekly snapshot of how COVID-19 is affecting children in the United States. CDC provides a national number of cases by age on its [COVID-19 data tracker](#), but there are no geographic indicators provided and the age data are not released on a regular schedule. Our data collection method allows for tracking the number of child cases weekly, as well as providing publicly reported case numbers for children at the state level.

**Q:** *The age ranges for children in the report are broad – why were these age ranges chosen and are data available for more specific age ranges of children?*

**A:** Each state makes different decisions about how to report the age distribution of COVID-19 cases, and as a result the age range for reported cases varies by state. For the purposes of this report it is not possible to standardize more detailed age ranges for children based on what is publicly available from the states at this time. Please refer to specific state health department websites of interest to see if the state provides more granular detail of cases by age (see report Appendix for links to all state data sources).

**Q:** *What is the definition of a COVID-19 case?*

**A:** COVID-19 cases are defined as persons who have been identified as a confirmed (via a diagnostic molecular test) or probable (via a clinical diagnosis) case. COVID-19 cases are reported by the states, [following reporting standards established by the CDC](#). For more information on the definitions of confirmed and probable cases, see the following resources: [COVID Tracking Project: Definitions](#); [CDC, COVID-19 Data and Surveillance](#).

**Q:** *Why are only a small portion (<5%) of child COVID-19 cases included for Texas?*

**A:** Texas Department of State Health Services reports overall confirmed cases but only a small fraction are included in the age distribution. Other sources for child COVID-19 cases are not included in the report but outline much higher numbers (eg, [Texas Public Schools COVID-19 Data](#)).

**Q:** *Why does the report not provide the percent of child cases that were symptomatic vs. asymptomatic or that had underlying conditions?*

**A:** For the report, we are limited to the data that states are making publicly available. At this time, states are not providing data related to symptoms or underlying conditions and age. CDC provides some information on COVID-19 hospitalizations by age on the [CDC COVID-NET dashboard](#).

**Q:** *For the child population for each state, does that match the listed age range for the state's child COVID-19 data?*

**A:** Yes, the report uses child population numbers that match on directly with the listed age range for children provided by each state. State population numbers were obtained from the [US Census Bureau](#).

**Q:** *The report provides “cumulative totals” for cases, tests, hospitalizations, and deaths for available states. Are those the total numbers since the states began reporting, or since the AAP and CHA started collecting this data?*

**A:** All “cumulative total” data represent cumulative counts since states began reporting COVID-19 data.

**Q:** *How can I learn more about COVID-19 cases in my state?*

**A:** Links to all state data sources are provided in the Appendix.

**Q:** *Are these data final?*

**A:** No. All data reported by state/local health departments included in this report are preliminary and subject to change and revision as health departments gather more information.

**Q:** *Is this the most recent report available? When will a new report be released?*

**A:** The most recent version of the report is available for [download on the AAP website](#). New reports are made available on a weekly basis at [aap.org/CovidStateData](#).

# Additional Resources

- For more information about COVID-19 data in your area, we encourage you to reach out to your state and local health department officials
- Visit the [AAP Critical Updates](#) site for daily updates, resources, and guidance on COVID-19 and pediatrics
- For COVID-19 articles for parents in English and Spanish, visit [HealthyChildren.org](#), the parenting website of the AAP



# Contact Information

This a joint report from the American Academy of Pediatrics and the Children's Hospital Association

- For technical questions, please contact the authors at:

**Bill Cull, PhD**

Senior Director, Research

American Academy of Pediatrics

[wcull@aap.org](mailto:wcull@aap.org)

**Mitch Harris, PhD**

Director of Research

Children's Hospital Association

[Mitch.Harris@childrenshospitals.org](mailto:Mitch.Harris@childrenshospitals.org)

- For media inquiries, please contact:

**Lisa Black**

Media Relations

American Academy of Pediatrics

[lblack@aap.org](mailto:lblack@aap.org)

**Gillian Ray**

External Relations

Children's Hospital Association

[Gillian.Ray@childrenshospitals.org](mailto:Gillian.Ray@childrenshospitals.org)

## Acknowledgements

Special thanks to the following individuals for their contributions to this report: Alex Rothenburger, MPA (Children's Hospital Association), Vinson Do (Children's Hospital Association), Lynn Olson, PhD (American Academy of Pediatrics), Blake Sisk, PhD (American Academy of Pediatrics), Mary Pat Frintner, MSPH (American Academy of Pediatrics), Liz Gottschlich, MA (American Academy of Pediatrics), Kate Kornfeind, MPH (American Academy of Pediatrics), Dave Prentice, MS (American Academy of Pediatrics), and Chloe Somberg (American Academy of Pediatrics)