

Children and COVID-19: State Data Report

A joint report from the American Academy of Pediatrics and the Children's Hospital Association

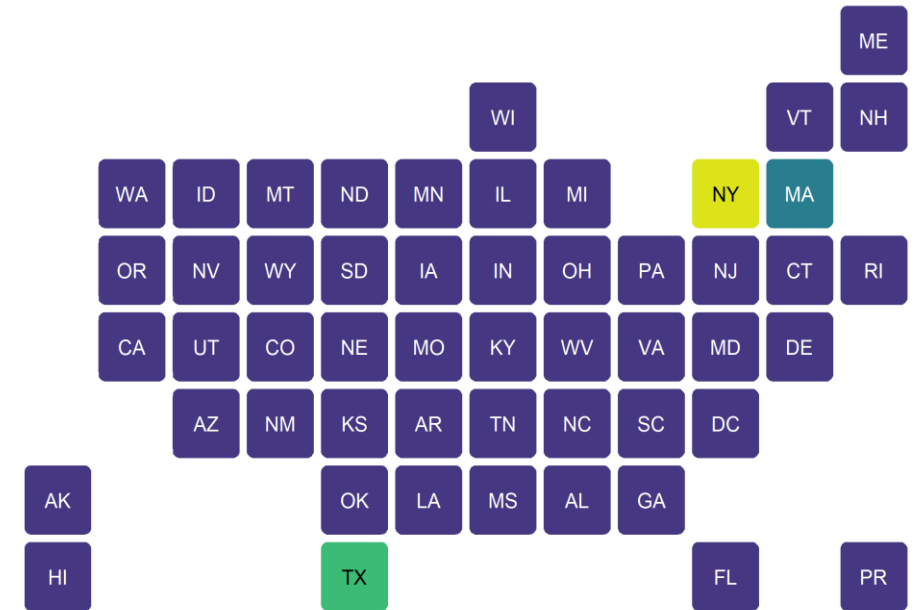
Summary of publicly reported data from 49 states, NYC, DC, PR, and GU

Version: 2/4/21

COVID-19: Available Data for Children

- State-level reports are the best publicly available data on COVID-19 cases in children
- This report summarizes what was available on 2/4/21
- **49 states, NYC, DC, Puerto Rico and Guam** provided age distributions of reported COVID-19 cases
 - 10 states provided age distribution of testing
 - 24 states and NYC provided age distribution of hospitalizations
 - 43 states, NYC and Guam provided age distribution of deaths

Fig 1A: States Reporting Age Distribution of COVID-19 Cases as of 2/4/21



Reporting age distribution of COVID-19 cases:

- Yes: Reported age distribution of cases
- TX: Reported age distribution for only 3% of cases
- NY: Only NYC reported age distribution of cases
- MA: Only reported age distribution of cases added in past 2 weeks

See detail in Appendix: Data from 49 states, NYC, DC, PR, and GU
Analysis by American Academy of Pediatrics and Children's Hospital Association
All data reported by state/local health departments are preliminary and subject to change

Children and COVID-19: Data Limitations

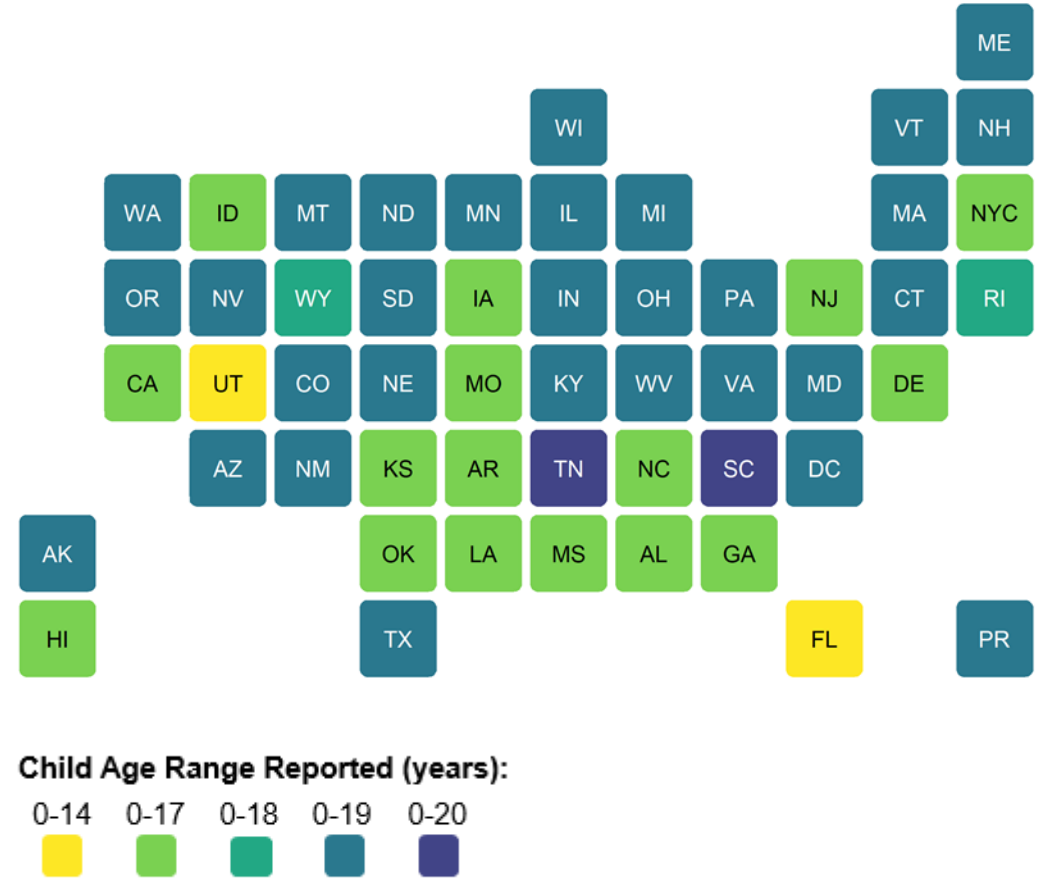
General Limitations

- Format, content, and metrics of reported COVID-19 data differed substantially by state
- Definition of “child”: Age ranges reported for children varied by state (0-14, 0-17, 0-18, 0-19, and 0-20 years; see Fig 1B)
- Unknown: Number of children infected but not tested and confirmed

State-Level Limitations

- TX: Age distribution reported for only 3% of confirmed cases (70,526/2,120,299), resulting in an undercount of child cases; TX is excluded from some figures
- NY: Did not provide age distribution for state-wide cases (NYC only)
- AL: As of 8/13/20, changed definition of child case from 0-24 to 0-17 years; as of 9/17/20, provided age distribution for confirmed cases only
- HI: As of 8/27/20, changed definition of child case from 0-19 to 0-17 years
- MA: As of 9/3/20, revised definition of probable case, leading to reduction in total case count; reported age distribution of cases added in last two weeks but not for total cases to date
- RI: As of 9/10/20, changed definition of child case from 0-19 to 0-18 years
- MO: As of 10/1/20, changed definition of child cases from 0-19 to 0-17 years

Fig 1B: Child Age Ranges of COVID-19 Cases Reported by States as of 2/4/21



Children and COVID-19: 2/4/21

Summary of State-Level Data Provided in this Report

Detail and links to state/local data sources provided in Appendix

Cumulative Number of Child COVID-19 Cases*

- 2,934,292 total child COVID-19 cases reported, and children represented 12.9% (2,934,292/22,697,315) of all cases
- Overall rate: 3,899 cases per 100,000 children in the population

Change in Child COVID-19 Cases*

- 117,518 new child COVID-19 cases were reported the past week from 1/28/21-2/4/21 (2,816,775 to 2,934,292)
- Over two weeks, 1/21/21-2/4/21, there was a 10% increase in child COVID-19 cases (257,680 new cases (2,676,612 to 2,934,292))

Testing (10 states reported)*

- Children made up between 6.0%-18.2% of total state tests, and between 7.0%-29.1% of children tested were tested positive

Hospitalizations (24 states and NYC reported)*

- Children were 1.2%-2.9% of total reported hospitalizations, and between 0.1%-2.3% of all child COVID-19 cases resulted in hospitalization

Mortality (43 states, NYC and Guam reported)*

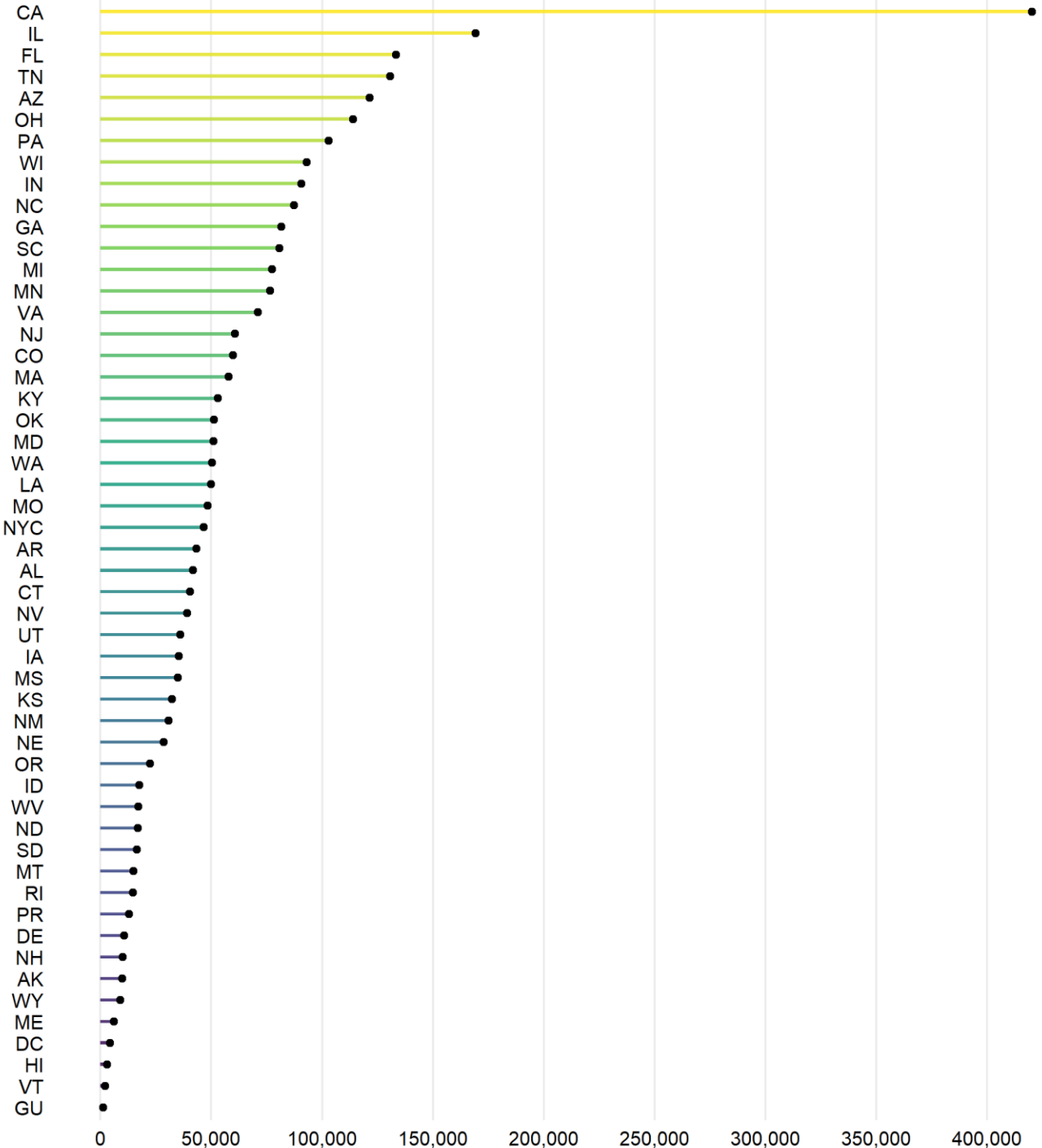
- Children were 0.00%-0.26% of all COVID-19 deaths, and 11 states reported zero child deaths
- In states reporting, 0.00%-0.05% of all child COVID-19 cases resulted in death

See detail in Appendix: Data from 49 states, NYC, DC, PR, and GU; Analysis by American Academy of Pediatrics and Children's Hospital Association

* Note: Data represent cumulative counts since states began reporting; All data reported by state/local health departments are preliminary and subject to change

Fig 2. Cumulative Number of Child COVID-19 Cases: 2/4/21

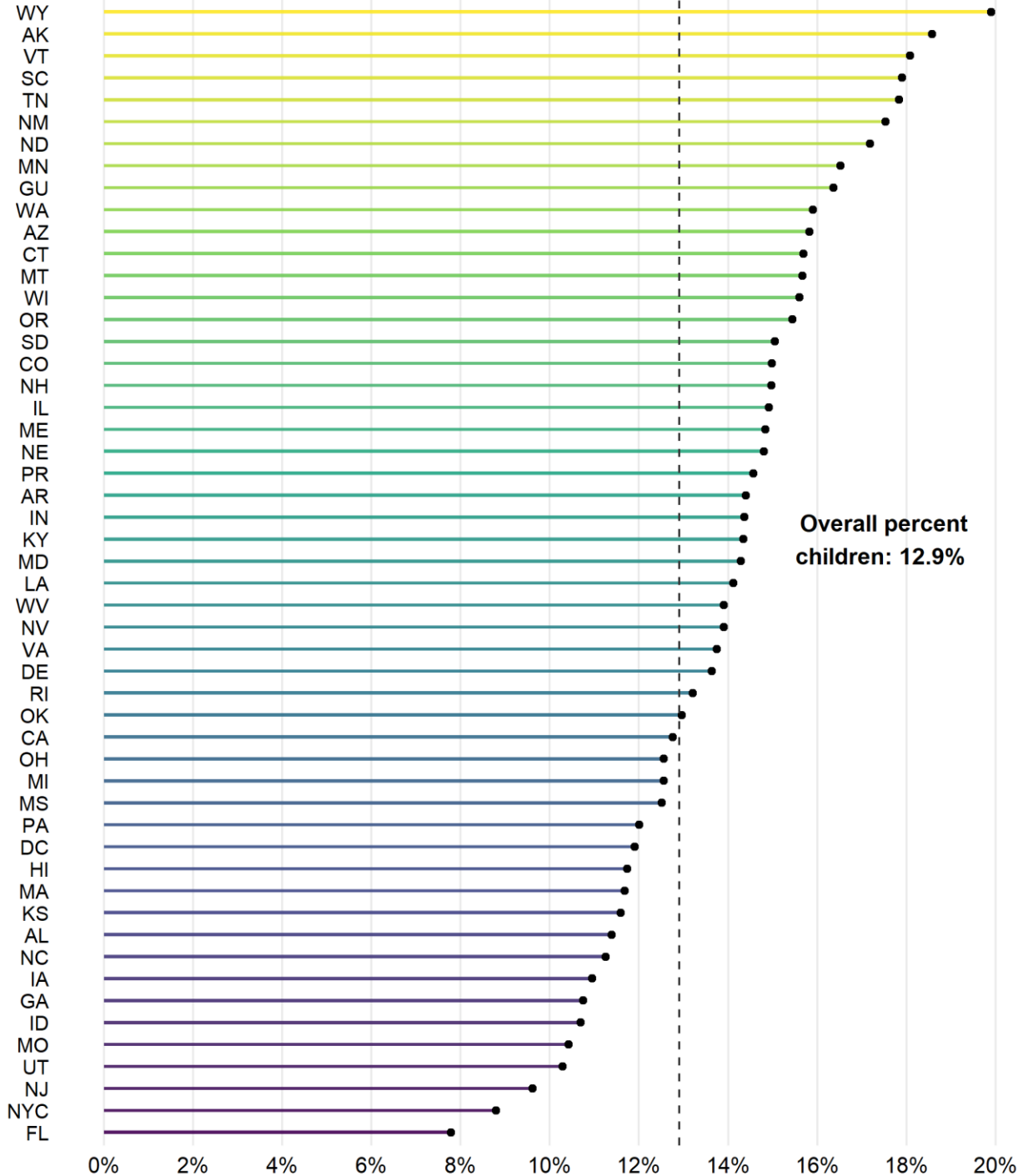
- 2,934,292 total child COVID-19 cases (cumulative)
- Seven states reported 100,000+ child cases
- Seven states reported fewer than 10,000 child cases



See detail in Appendix: Data from 48 states, NYC, DC, PR, and GU (TX excluded from figure)
All data reported by state/local health departments are preliminary and subject to change
Analysis by American Academy of Pediatrics and Children's Hospital Association

Fig 3. Percent of Cumulative COVID-19 Cases that were Children: 2/4/21

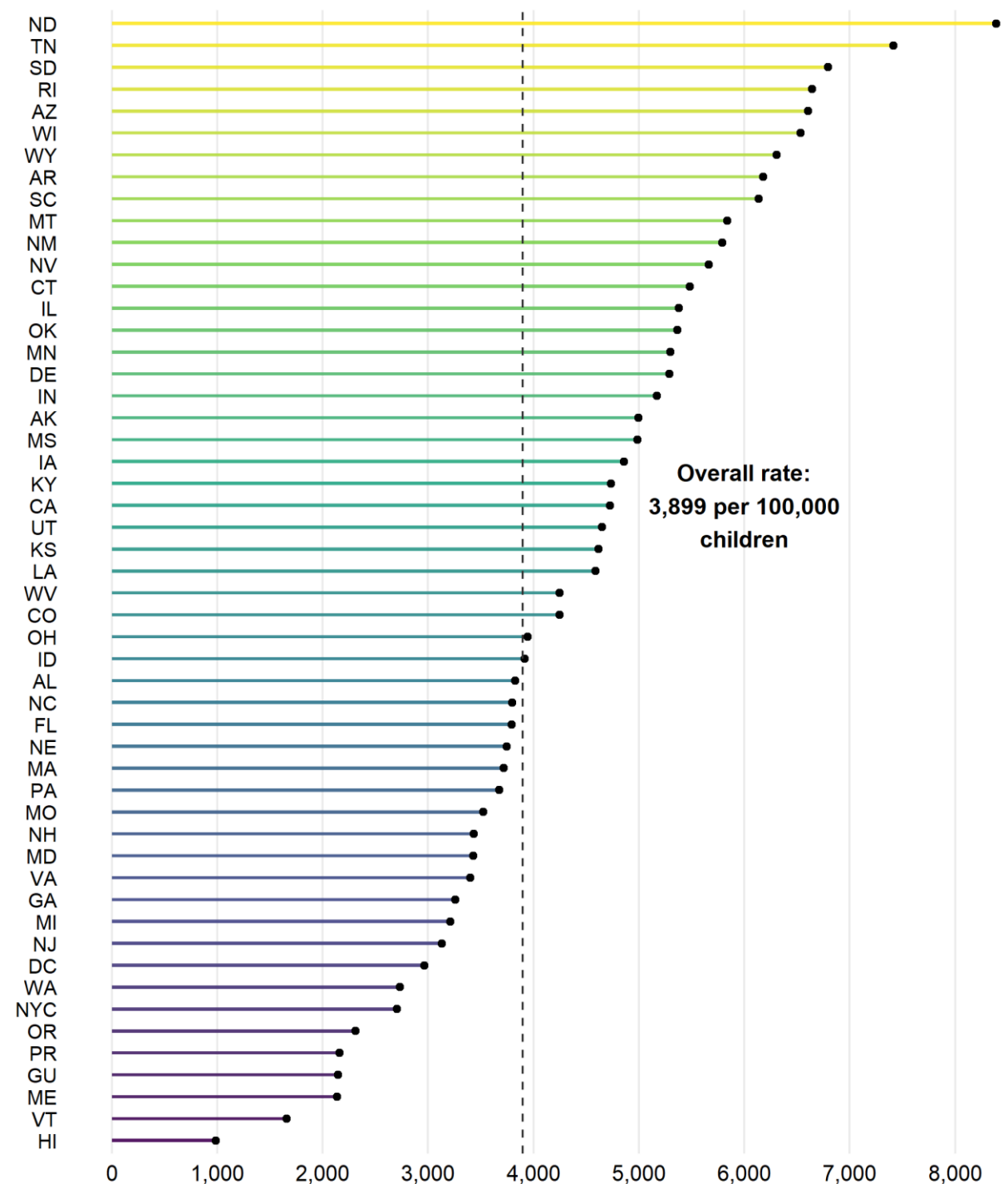
- Children represented 12.9% (2,934,292/22,697,315) of all available cases
- Eight states reported 16% or more of cases were children



See detail in Appendix: Data from 48 states, NYC, DC, PR, and GU (TX excluded from figure)
All data reported by state/local health departments are preliminary and subject to change
Analysis by American Academy of Pediatrics and Children's Hospital Association

Fig 4. Cumulative COVID-19 Cases per 100,000 Children: 2/4/21

- Calculated using state-level population estimates from US Census Bureau (2019)*
- Overall rate: 3,899 child COVID-19 cases per 100,000 children in the population
- Nine states reported more than 6,000 cases per 100,000



See detail in Appendix: Data from 48 states, NYC, DC, PR, and GU (TX excluded from figure)

All data reported by state/local health departments are preliminary and subject to change

Analysis by American Academy of Pediatrics and Children's Hospital Association

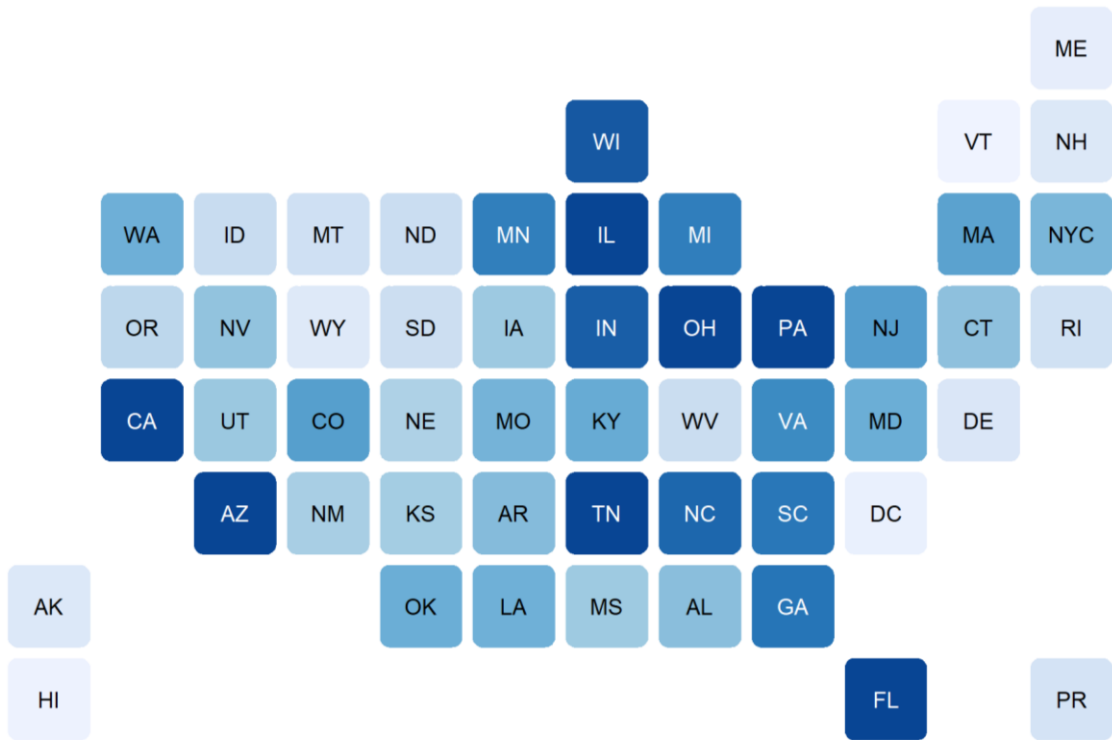
* Source: US Census Bureau, State Population by Characteristics: 2010-2019,

<https://www.census.gov/data/tables/time-series/demo/popest/2010s-state-detail.html>

Fig 5. Cumulative Child COVID-19 Cases and Percent Increase in Child Cases

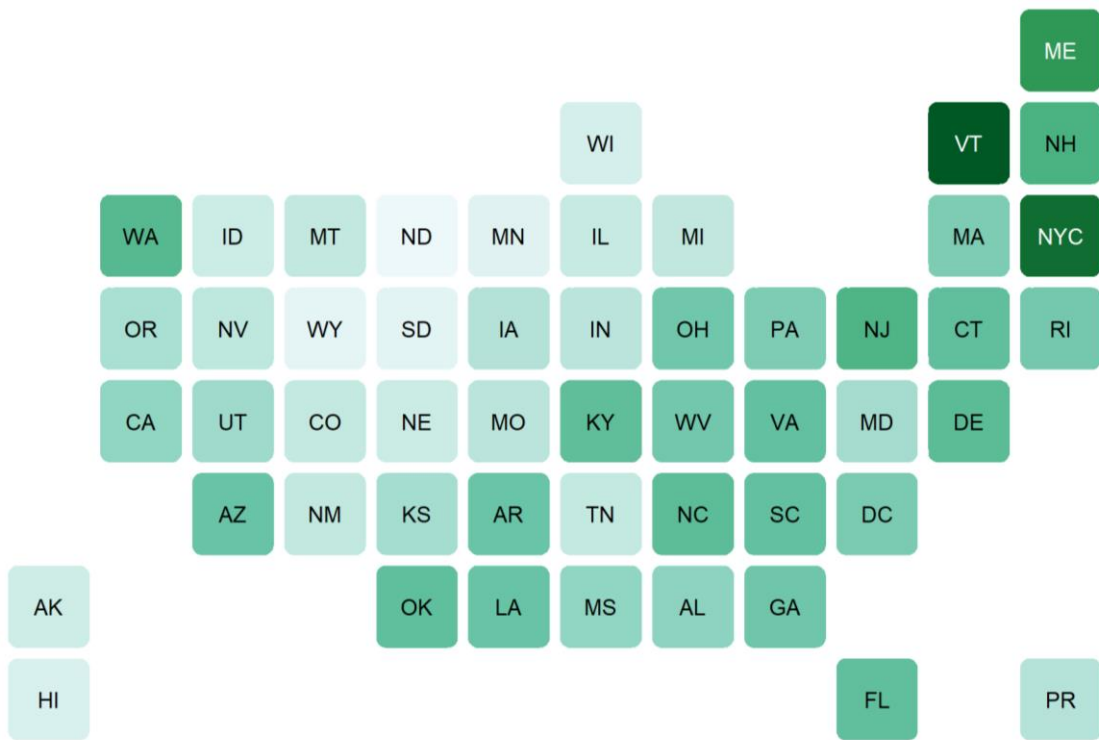
A. Cumulative Child COVID-19 Cases, 2/4/21

7 states with 100,000+ cumulative child cases

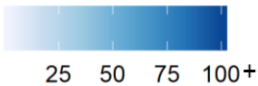


B. Percent Increase in Child Cases, 1/21/21-2/4/21

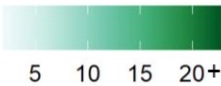
From 1/21-2/4, there were 257,680 new child cases reported (2,676,612 to 2,934,292); 10% increase)



Cumulative child COVID-19 cases (thousands)

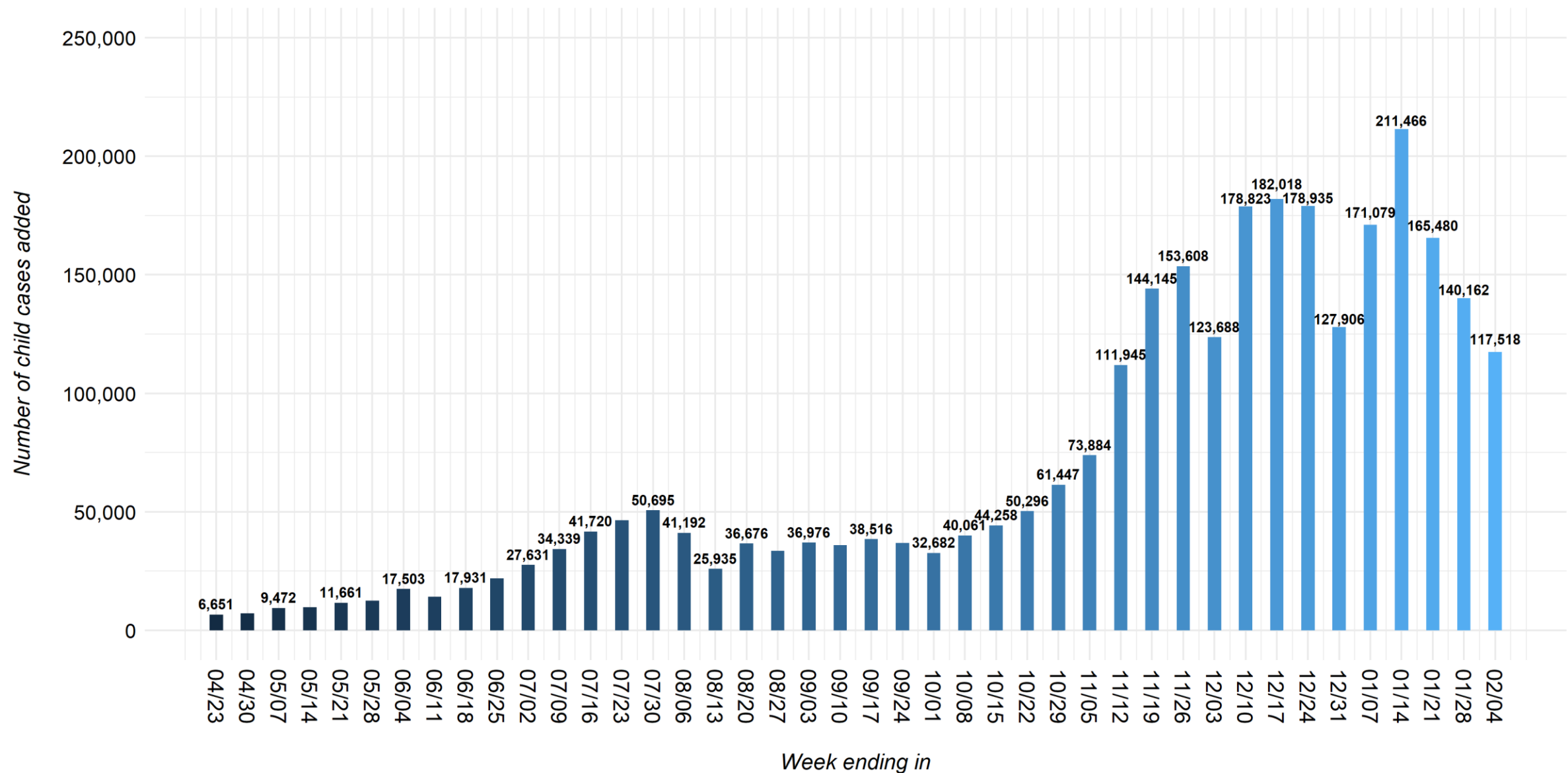


Percent increase



See detail in Appendix: Data from 48 states, NYC, DC, and PR (TX excluded from figures); All data reported by state/local health departments are preliminary and subject to change; Analysis by American Academy of Pediatrics and Children's Hospital Association

Fig 6. United States: Number of Child COVID-19 Cases Added in Past Week*



* Note: 4 states changed their definition of child cases: AL as of 8/13/20, HI as of 8/27/20, RI as of 9/10/20, MO as of 10/1/20; TX reported age for only a small proportion of total cases each week (eg, 3-20%)
See detail in Appendix: Data from 48 states, NYC, DC, and PR
All data reported by state/local health departments are preliminary and subject to change; Analysis by American Academy of Pediatrics and Children's Hospital Association

Appendix Table 1: Case Data Available on 2/4/21

Summary data across the 49 states, NYC, DC, PR, and GU that provided age distribution of reported COVID-19 cases*

Child population, 2019	Cumulative total cases (all ages)	Cumulative child cases	Cumulative percent children of total cases	Cases per 100,000 children
75,266,842	22,697,315	2,934,292	12.9%	3898.5

* Note: Data represent cumulative counts since states began reporting; All data reported by state/local health departments are preliminary and subject to change

Appendix Table 2A: Summary of Child Case Data from 4/16/20 – 2/4/21*

Date	Number of locations reporting age	Cumulative total cases (all ages)	Cumulative child cases^	Percent children of total cases	Cases per 100,000 children
2/4/21	49 states, NYC, DC, PR, and GU	22,697,315	2,934,292	12.9%	3898.5
1/28/21	49 states, NYC, DC, PR, and GU	21,963,445	2,816,775	12.8%	3742.4
1/21/21	49 states, NYC, DC, PR, and GU	21,036,194	2,676,612	12.7%	3556.2
1/14/21	49 states, NYC, DC, PR, and GU	19,918,714	2,511,132	12.6%	3336.3
1/7/21	49 states, NYC, DC, PR, and GU	18,463,319	2,299,666	12.5%	3055.4
12/31/20	49 states, NYC, DC, PR, and GU	17,137,295	2,128,587	12.4%	2828.1
12/24/20	49 states, NYC, DC, PR, and GU	16,125,324	2,000,681	12.4%	2658.1
12/17/20	49 states, NYC, DC, PR, and GU	14,766,831	1,821,746	12.3%	2420.4
12/10/20	49 states, NYC, DC, PR, and GU	13,462,337	1,639,728	12.2%	2178.6
12/3/20	49 states, NYC, DC, PR, and GU	12,167,620	1,460,905	12.0%	1941.0
11/26/20	49 states, NYC, DC, PR, and GU	11,184,900	1,337,217	12.0%	1776.6
11/19/20	49 states, NYC, DC, PR, and GU	10,060,749	1,183,609	11.8%	1572.6
11/12/20	49 states, NYC, DC, PR, and GU	9,037,991	1,039,464	11.5%	1381.0
11/5/20	49 states, NYC, DC, PR, and GU	8,236,710	927,518	11.3%	1232.3
10/29/20	49 states, NYC, DC, PR, and GU	7,669,038	853,635	11.1%	1134.1

* Note: Data represent cumulative counts since states began reporting; All data reported by state/local health departments are preliminary and subject to change

^ Unknown: number of children infected but not tested and confirmed

Appendix Table 2A, cont.: Summary of Child Case Data from 4/16/20 – 2/4/21*

Date	Number of locations reporting age	Cumulative total cases (all ages)	Cumulative child cases^	Percent children of total cases	Cases per 100,000 children
10/22/20	49 states, NYC, DC, PR, and GU	7,207,186	792,188	11.0%	1052.5
10/15/20	49 states, NYC, DC, PR, and GU	6,837,527	741,891	10.9%	985.7
10/8/20	49 states, NYC, DC, PR, and GU	6,505,390	697,633	10.7%	926.9
10/1/20	49 states, NYC, DC, PR, and GU [#]	6,231,564	657,572	10.6%	873.7
9/24/20	49 states, NYC, DC, PR, and GU	5,965,268	624,890	10.5%	828.5
9/17/20	49 states, NYC, DC, PR, and GU	5,721,402	587,948	10.3%	779.5
9/10/20	49 states, NYC, DC, PR, and GU	5,493,006	549,432	10.0%	728.5
9/3/20	49 states, NYC, DC, PR, and GU	5,265,157	513,415	9.8%	680.3
8/27/20	49 states, NYC, DC, PR, and GU	5,018,113	476,439	9.5%	631.3
8/20/20	49 states, NYC, DC, PR, and GU	4,766,825	442,785	9.3%	583.2
8/13/20	49 states, NYC, DC, PR, and GU [~]	4,486,830	406,109	9.1%	538.1
8/6/20	49 states, NYC, DC, PR, and GU	4,159,947	380,174	9.1%	500.7
7/30/20	49 states, NYC, DC, PR, and GU	3,835,573	338,982	8.8%	446.5
7/23/20	49 states, NYC, DC, PR, and GU	3,416,630	288,287	8.4%	379.7

* Note: Data represent cumulative counts since states began reporting; All data reported by state/local health departments are preliminary and subject to change

^ Unknown: number of children infected but not tested and confirmed

As of 10/1/20, MO changed definition of child case from 0-19 to 0-17 years, resulting in a downward revision of cumulative child cases

~ As of 8/13/20, AL changed definition of child case from 0-24 to 0-17 years, resulting in a downward revision of cumulative child cases

Appendix Table 2A, cont.: Summary of Child Case Data from 4/16/20 – 2/4/21*

Date	Number of locations reporting age	Cumulative total cases (all ages)	Cumulative child cases^	Percent children of total cases	Cases per 100,000 children
7/16/20	49 states, NYC, DC, PR, and GU	3,042,413	241,904	8.0%	318.6
7/9/20	49 states, NYC, DC, PR, and GU	2,651,066	200,184	7.6%	263.7
7/2/20	49 states, NYC, DC, PR, and GU	2,335,060	165,845	7.1%	218.4
6/25/20	49 states, NYC, DC, PR, and GU	2,073,387	138,213	6.7%	182.0
6/18/20	49 states, NYC, DC, PR, and GU	1,885,905	116,176	6.2%	153.0
6/11/20	49 states, NYC, DC, PR, and GU	1,750,240	98,246	5.6%	129.4
6/4/20	49 states, NYC, DC, PR, and GU	1,623,334	84,016	5.2%	110.7
5/28/20	47 states, NYC, DC, PR, and GU	1,425,154	66,513	4.7%	91.5
5/21/20	47 states, NYC, DC, PR, and GU	1,288,305	54,031	4.2%	74.4
5/14/20	47 states, NYC, DC, PR, and GU	1,159,407	42,370	3.7%	58.3
5/7/20	46 states, NYC, DC, PR, and GU	1,010,112	32,568	3.2%	45.0
4/30/20	47 states, NYC, DC, and PR	849,615	23,096	2.7%	31.8
4/23/20	48 states, NYC, DC, PR, and GU	710,953	15,911	2.2%	21.2
4/16/20	46 states, NYC, and DC	456,923	9,259	2.0%	13.3

* Note: Data represent cumulative counts since states began reporting; All data reported by state/local health departments are preliminary and subject to change

^ Unknown: number of children infected but not tested and confirmed

Appendix Table 2B: Summary of Child Hospitalization Data from 5/21/20 – 2/4/21*

Date~	Number of locations reporting age distribution of hospitalizations	Cumulative total hospitalizations (all ages)	Cumulative child hospitalizations	Percent children of total hospitalizations	Hospitalization rate^
2/4/21	24 states and NYC	623,006	11,585	1.9%	0.8%
1/28/21	24 states and NYC	605,509	11,192	1.8%	0.8%
1/21/21	24 states and NYC	581,897	10,660	1.8%	0.8%
1/14/21	24 states and NYC	560,125	10,182	1.8%	0.8%
1/7/21	24 states and NYC	533,910	9,661	1.8%	0.9%
12/31/20	24 states and NYC	510,384	9,259	1.8%	0.9%
12/17/20	24 states and NYC	468,643	8,411	1.8%	0.9%
12/10/20	24 states and NYC	445,394	7,913	1.8%	0.9%
12/3/20	24 states and NYC	421,766	7,515	1.8%	1.0%
11/19/20	24 states and NYC	381,141	6,716	1.8%	1.1%
11/12/20	23 states and NYC	362,453	6,337	1.7%	1.2%
11/5/20	24 states and NYC	360,724	6,172	1.7%	1.3%
10/29/20	24 states and NYC	348,296	5,899	1.7%	1.3%
10/22/20	24 states and NYC	324,720	5,585	1.7%	1.3%
10/15/20	24 states and NYC	314,715	5,353	1.7%	1.4%
10/8/20	25 states and NYC#	307,135	5,211	1.7%	1.4%
10/1/20	25 states and NYC	302,896	5,340	1.8%	1.6%
9/24/20	25 states and NYC	294,901	5,164	1.8%	1.7%
9/17/20	25 states and NYC	288,345	5,016	1.7%	1.6%

* Note: Data represent cumulative counts since states began reporting; All data reported by state/local health departments are preliminary and subject to change
~ Data from weeks ending 11/26/20 and 12/24/20 are not included

^ Hospitalization rate = number of child hospitalizations / number of child cases

As of 10/8/20, AZ revised hospitalization data, resulting in a downward revision of cumulative child hospitalizations

Appendix Table 2B, cont.: Summary of Child Hospitalization Data from 5/21/20 – 2/4/21*

Date	Number of locations reporting age distribution of hospitalizations	Cumulative total hospitalizations (all ages)	Cumulative child hospitalizations	Percent children of total hospitalizations	Hospitalization rate^
9/10/20	24 states and NYC	270,034	4,677	1.7%	1.8%
9/3/20	23 states and NYC	257,300	4,321	1.7%	1.9%
8/27/20	22 states and NYC	243,056	4,163	1.7%	2.1%
8/20/20	21 states and NYC	234,810	4,062	1.7%	2.2%
8/13/20	21 states and NYC	225,893	3,849	1.7%	2.2%
8/6/20	20 states and NYC	206,189	3,276	1.6%	2.2%
7/30/20	20 states and NYC	195,106	2,669	1.4%	2.0%
7/23/20	20 states and NYC	181,345	2,304	1.3%	2.0%
7/16/20	20 states and NYC	172,787	2,074	1.2%	2.1%
7/9/20	20 states and NYC	164,158	1,948	1.2%	2.4%
7/2/20	20 states and NYC	156,640	1,780	1.1%	2.6%
6/25/20	20 states and NYC	151,583	1,663	1.1%	2.9%
6/18/20	19 states and NYC	140,215	1,433	1.0%	3.2%
6/11/20	19 states and NYC	134,600	1,322	1.0%	3.4%
6/4/20	19 states and NYC	128,779	1,231	1.0%	3.4%
5/28/20	16 states and NYC	114,678	1,054	0.9%	3.8%
5/21/20	17 states and NYC	105,665	891	0.8%	3.8%

* Note: Data represent cumulative counts since states began reporting; All data reported by state/local health departments are preliminary and subject to change
^ Hospitalization rate = number of child hospitalizations / number of child cases

Appendix Table 2C: Summary of Child Mortality Data from 5/21/20 – 2/4/21*

Date~	Number of locations reporting age distribution of deaths	Cumulative total deaths (all ages)	Cumulative child deaths	Percent children of total deaths	Percent of child cases resulting in death^
2/4/21	43 states, NYC, and GU	388,204	227	0.06	0.01%
1/28/21	43 states, NYC, and GU	369,149	215	0.06%	0.01%
1/21/21	43 states, NYC, and GU	348,860	205	0.06%	0.01%
1/14/21	43 states and NYC	330,261	191	0.06%	0.01%
1/7/21	42 states and NYC	297,914	188	0.06%	0.01%
12/31/20	43 states and NYC	294,443	179	0.06%	0.01%
12/17/20	42 states and NYC	263,833	172	0.07%	0.01%
12/10/20	42 states and NYC	249,442	162	0.06%	0.01%
12/3/20	43 states and NYC	236,996	154	0.06%	0.01%
11/19/20	43 states and NYC	218,007	138	0.06%	0.01%
11/12/20	42 states and NYC	210,441	133	0.06%	0.01%
11/5/20	42 states and NYC	199,564	123	0.06%	0.01%
10/29/20	42 states and NYC	194,175	121	0.06%	0.02%
10/22/20	42 states and NYC	189,250	120	0.06%	0.02%
10/15/20	42 states and NYC	184,294	120	0.07%	0.02%
10/8/20	42 states and NYC	180,014	115	0.06%	0.02%
10/1/20	42 states and NYC	175,423	112	0.06%	0.02%
9/24/20	42 states and NYC	170,971	109	0.06%	0.02%
9/17/20	42 states and NYC	167,019	109	0.07%	0.02%

* Note: Data represent cumulative counts since states began reporting; All data reported by state/local health departments are preliminary and subject to change
~ Data from weeks ending 11/26/20 and 12/24/20 are not included
^ Number of child deaths / number of child cases

Appendix Table 2C, cont.: Summary of Child Mortality Data from 5/21/20 – 2/4/21*

Date	Number of locations reporting age distribution of deaths	Cumulative total deaths (all ages)	Cumulative child deaths	Percent children of total deaths	Percent of child cases resulting in death^
9/10/20	42 states and NYC	160,856	105	0.07%	0.02%
9/3/20	42 states and NYC	156,053	103	0.07%	0.02%
8/27/20	43 states and NYC [#]	152,884	101	0.07%	0.02%
8/20/20	45 states and NYC	154,279	92	0.06%	0.02%
8/13/20	45 states and NYC	147,356	90	0.06%	0.02%
8/6/20	44 states and NYC	139,685	90	0.06%	0.02%
7/30/20	44 states and NYC	133,267	86	0.06%	0.03%
7/23/20	44 states and NYC	121,539	76	0.06%	0.03%
7/16/20	43 states and NYC	119,265	66	0.06%	0.03%
7/9/20	42 states and NYC	112,289	62	0.06%	0.03%
7/2/20	42 states and NYC	108,513	58	0.05%	0.04%
6/25/20	42 states and NYC	104,683	57	0.05%	0.04%
6/18/20	42 states and NYC	101,056	54	0.05%	0.05%
6/11/20	40 states and NYC	89,866	48	0.05%	0.05%
6/4/20	40 states and NYC	91,241	46	0.05%	0.06%
5/28/20	39 states and NYC	82,298	30	0.04%	0.05%
5/21/20	38 states and NYC	71,689	28	0.04%	0.06%

* Note: Data represent cumulative counts since states began reporting; All data reported by state/local health departments are preliminary and subject to change

^ Number of child deaths / number of child cases

As of 8/27/20, RI, MI, and SC not reporting age distributions of COVID-19 deaths (exact numbers not provided for <5 deaths); mortality data from those states excluded

Appendix Table 3A: Child COVID-19 Case Data Available on 2/4/21*

Click location name to view original data source

Location	Age range	Child population, 2019	Cumulative child cases	Percent children of total cases	Cumulative total cases (all ages)	Cases per 100,000 children
Alabama[^]	0-17	1,088,668	41,667	11.4%	365,818	3827.3
Alaska	0-19	196,852	9,837	18.6%	52,956	4997.2
Arizona	0-19	1,838,598	121,451	15.8%	767,379	6605.6
Arkansas	0-17	700,155	43,252	14.4%	300,430	6177.5
California	0-17	8,894,641	420,213	12.8%	3,294,447	4724.3
Colorado	0-19	1,407,971	59,810	15.0%	399,267	4248.0
Connecticut	0-19	735,193	40,324	15.7%	257,004	5484.8
Delaware	0-17	203,572	10,770	13.6%	78,982	5290.5
District of Columbia	0-19	149,337	4,430	11.9%	37,199	2966.4
Florida	0-14	3,512,139	133,256	7.8%	1,712,326	3794.2
Georgia	0-17	2,503,881	81,598	10.7%	759,228	3258.9
Guam	0-19	57,727	1,240	16.4%	7,579	2148.0
Hawaii	0-17	299,868	2,955	11.7%	25,174	985.4
Idaho	0-17	448,201	17,548	10.7%	164,163	3915.2
Illinois	0-19	3,145,309	169,142	14.9%	1,134,231	5377.6
Indiana	0-19	1,755,070	90,722	14.4%	631,331	5169.2
Iowa	0-17	726,841	35,307	10.9%	322,511	4857.6
Kansas	0-17	700,250	32,342	11.6%	278,915	4618.6
Kentucky	0-19	1,118,934	53,002	14.3%	369,519	4736.8
Louisiana	0-17	1,087,630	49,890	14.1%	353,507	4587.0
Maine	0-19	281,158	6,014	14.8%	40,534	2139.0
Maryland	0-19	1,489,721	51,076	14.3%	357,483	3428.6
Massachusetts[#]	0-19	1,558,231	57,905	11.7%	495,599	3716.1
Michigan	0-19	2,407,690	77,327	12.6%	615,860	3211.7
Minnesota	0-19	1,445,346	76,615	16.5%	463,766	5300.8
Mississippi	0-17	698,583	34,838	12.5%	278,532	4987.0
Missouri[†]	0-17	1,370,585	48,279	10.4%	463,119	3522.5

* Note: Data represent cumulative counts since states began reporting; All data reported by state/local health departments are preliminary and subject to change; ^ As of 8/13/20, AL changed definition of child case from 0-24 to 0-17 years

As of 9/3/20, MA only reported age distribution of cases added in last two weeks but not for total cases to date; 2/4/21 totals calculated using MA Dept. of Public Health COVID-19 Dashboard published 2/4/21 (data from 1/17/21-1/30/21) and 1/14/21 version of this report

† As of 10/1/20, MO changed definition of child case from 0-19 to 0-17 years

Appendix Table 3B: Child COVID-19 Case Data Available on 2/4/21*

Click location name to view original data source

Location	Age range	Child population, 2019	Cumulative child cases	Percent children of total cases	Cumulative total cases (all ages)	Cases per 100,000 children
Montana	0-19	254,416	14,852	15.7%	94,810	5837.7
Nebraska	0-19	760,272	28,497	14.8%	192,549	3748.3
Nevada	0-19	688,997	39,018	13.9%	280,707	5663.1
New Hampshire	0-19	291,038	9,989	15.0%	66,721	3432.2
New Jersey	0-17	1,938,578	60,672	9.6%	631,309	3129.7
New Mexico	0-19	531,712	30,788	17.5%	175,652	5790.4
North Carolina	0-17	2,300,715	87,387	11.3%	776,307	3798.3
North Dakota	0-19	200,777	16,846	17.2%	98,034	8390.4
NYC	0-17	1,726,900	46,689	8.8%	531,097	2703.6
Ohio	0-19	2,886,873	113,885	12.6%	906,727	3944.9
Oklahoma	0-17	952,238	51,110	13.0%	394,283	5367.4
Oregon	0-19	965,480	22,332	15.4%	144,605	2313.0
Pennsylvania	0-19	2,801,187	102,900	12.0%	856,986	3673.4
Puerto Rico	0-19	594,011	12,828	14.6%	88,060	2159.6
Rhode Island	0-18	220,525	14,650	13.2%	110,931	6643.2
South Carolina	0-20	1,314,988	80,692	17.9%	450,794	6136.3
South Dakota	0-19	240,567	16,348	15.0%	108,639	6795.6
Tennessee	0-20	1,762,659	130,727	17.8%	733,216	7416.5
Texas^	0-19	8,210,585	4,783	6.8%	70,526	--
Utah	0-14	774,764	36,016	10.3%	350,000	4648.6
Vermont	0-19	134,415	2,229	18.1%	12,329	1658.3
Virginia	0-19	2,087,426	71,017	13.8%	516,398	3402.1
Washington	0-19	1,840,306	50,303	15.9%	316,372	2733.4
West Virginia	0-19	402,473	17,103	13.9%	123,044	4249.5
Wisconsin	0-19	1,422,095	92,944	15.6%	595,756	6535.7
Wyoming	0-18	140,694	8,876	19.9%	44,604	6308.9

* Note: Data represent cumulative counts since states began reporting; All data reported by state/local health departments are preliminary and subject to change
^ Texas reported age for only 3% of total confirmed cases; Cases per 100,000 children omitted for Texas; Data for Texas in this report is limited to the case count for which age is provided

Appendix Table 4: Child Testing Data Available on 2/4/21*

COVID-19 Testing and Children

Location	Age range	Cumulative total tests (all ages)	Cumulative child tests	Percent children of total tests	Positive rate^
Arizona	0-19	3,489,351	610,141	17.5%	19.9%
Illinois	0-19	16,258,348	1,927,300	11.9%	8.8%
Indiana	0-19	7,096,324	1,293,660	18.2%	7.0%
Iowa	0-17	2,022,928	121,376	6.0%	29.1%
Minnesota	0-19	6,578,995	841,841	12.8%	9.1%
Nevada	0-19	2,511,160	328,962	13.1%	11.9%
Rhode Island	0-18	692,791	111,926	16.2%	13.1%
Tennessee	0-20	6,359,798	1,045,893	16.4%	12.5%
West Virginia	0-19	1,955,795	214,942	11.0%	8.0%
Wyoming	0-18	656,543	70,907	10.8%	12.5%

* Note: Data represent cumulative counts since states began reporting; All data reported by state/local health departments are preliminary and subject to change

^ Positive rate = number of child cases / number of child tests

Appendix Table 5: Child Hospitalization Data Available on 2/4/21*

COVID-19-Associated Hospitalizations and Children

Location	Age range	Cumulative child hospitalizations	Cumulative total hospitalizations (all ages)	Percent children of total hospitalizations	Hospitalization rate^
Alaska	0-19	19	1,182	1.6%	0.2%
Arizona[#]	0-19	1,456	53,432	2.7%	1.2%
Colorado	0-19	626	22,117	2.8%	1.0%
Florida	0-14	923	73,266	1.3%	0.7%
Georgia	0-17	969	50,953	1.9%	1.2%
Hawaii	0-17	20	1,443	1.4%	0.7%
Idaho	0-17	127	6,749	1.9%	0.7%
Indiana	0-19	552	40,667	1.4%	0.6%
Kansas	0-17	132	8,578	1.5%	0.4%
Minnesota	0-19	714	24,565	2.9%	0.9%
Mississippi	0-17	146	8,777	1.7%	0.4%
Nebraska	0-19	104	5,862	1.8%	0.4%
New Hampshire	0-19	13	1,042	1.2%	0.1%
New Jersey	0-17	772	60,984	1.3%	1.3%
NYC	0-17	1,097	80,439	1.4%	2.3%
Ohio	0-19	1,068	46,873	2.3%	0.9%
Oregon	0-19	194	7,896	2.5%	0.9%
Rhode Island	0-18	170	8,296	2.0%	1.2%
South Carolina	0-20	312	18,324	1.7%	0.4%
South Dakota	0-19	153	6,321	2.4%	0.9%
Tennessee	0-20	409	17,362	2.4%	0.3%
Utah	0-14	264	13,648	1.9%	0.7%
Virginia	0-19	377	21,749	1.7%	0.5%
Washington	0-19	338	17,987	1.9%	0.7%
Wisconsin	0-19	630	24,554	2.6%	0.7%

* Note: Data represent cumulative counts since states began reporting; All data reported by state/local health departments are preliminary and subject to change

^ Hospitalization rate = number of child hospitalizations / number of child cases

As of 10/8/20, AZ revised hospitalization data, resulting in a downward revision of cumulative child hospitalizations

Appendix Table 6A: Child Mortality Data Available on 2/4/21*

COVID-19-Associated Deaths and Children

Location	Age range	Cumulative child deaths	Cumulative total deaths (all ages)	Percent children of total deaths	Percent of child cases resulting in death [^]
Alabama[#]	0-17	7	8,203	0.09%	0.02%
Alaska	0-19	0	277	0.00%	0.00%
Arizona	0-19	22	13,576	0.16%	0.02%
Arkansas	0-17	0	4,985	0.00%	0.00%
California	0-17	12	41,634	0.03%	0.00%
Colorado	0-19	8	5,664	0.14%	0.01%
Connecticut	0-19	5	7,157	0.07%	0.01%
Delaware	0-17	2	1,130	0.18%	0.02%
District of Columbia	0-19	0	926	0.00%	0.00%
Florida	0-14	5	27,019	0.02%	0.00%
Georgia	0-17	9	12,907	0.07%	0.01%
Guam	0-19	1	129	0.78%	0.08%
Hawaii	0-17	0	406	0.00%	0.00%
Idaho	0-17	0	1,748	0.00%	0.00%
Illinois	0-19	13	19,375	0.07%	0.01%
Indiana	0-19	6	9,713	0.06%	0.01%
Iowa	0-17	2	4,975	0.04%	0.01%
Kansas	0-17	0	3,895	0.00%	0.00%
Kentucky	0-19	2	3,863	0.05%	0.00%
Louisiana	0-17	7	8,421	0.08%	0.01%
Maine	0-19	0	630	0.00%	0.00%
Maryland	0-19	10	7,220	0.14%	0.02%
Massachusetts	0-19	3	14,241	0.02%	0.01%
Minnesota	0-19	1	6,234	0.02%	0.00%

Note: Data represent cumulative counts since states began reporting; All data reported by state/local health departments are preliminary and subject to change; [^] Number of child deaths / number of child cases;

As of 9/3/20, MA only reported age distribution of cases added in last two weeks but not for total cases to date; 2/4/21 totals calculated using MA Dept. of Public Health COVID-19 Dashboard published 2/4/21 (data from 1/17/21-1/30/21) and 1/14/21 version of this report

As of 8/13/20, AL changed definition of child case, resulting in a downward revision of cumulative child deaths

Appendix Table 6B: Child Mortality Data Available on 2/4/21*

COVID-19-Associated Deaths and Children

Location	Age range	Cumulative child deaths	Cumulative total deaths (all ages)	Percent children of total deaths	Percent of child cases resulting in death^
Mississippi	0-17	2	6,182	0.03%	0.01%
Missouri	0-17	3	7,117	0.04%	0.01%
Nebraska	0-19	5	1,952	0.26%	0.02%
Nevada	0-19	4	4,373	0.10%	0.01%
New Hampshire	0-19	0	1,076	0.00%	0.00%
New Jersey	0-17	4	19,506	0.02%	0.01%
North Carolina	0-17	2	9,578	0.02%	0.00%
North Dakota	0-19	1	1,422	0.07%	0.01%
NYC	0-17	24	27,354	0.09%	0.05%
Ohio	0-19	6	11,430	0.05%	0.01%
Oklahoma	0-17	1	3,654	0.03%	0.00%
Oregon	0-19	1	1,991	0.05%	0.00%
Pennsylvania	0-19	6	22,101	0.03%	0.01%
South Dakota	0-19	0	1,782	0.00%	0.00%
Tennessee	0-20	7	10,033	0.07%	0.01%
Texas [#]	0-19	38	35,988	0.11%	--
Vermont	0-19	0	179	0.00%	0.00%
Virginia	0-19	1	6,650	0.02%	0.00%
Washington	0-19	5	4,388	0.11%	0.01%
Wisconsin	0-19	2	6,496	0.03%	0.00%
Wyoming	0-18	0	624	0.00%	0.00%

* Note: Data represent cumulative counts since states began reporting; All data reported by state/local health departments are preliminary and subject to change; ^ Number of child deaths / number of child cases;
[#] As of 7/30/20, Texas provided age distribution for all COVID-19-associated deaths; Texas reported age for only 3% of total confirmed cases; Percent of child cases resulting in death omitted for Texas;
 Data for Texas in this report is limited to the case count for which age is provided

Frequently Asked Questions

Q: *Why are the AAP and CHA collecting this data?*

A: Our goal is to provide a weekly snapshot of how COVID-19 is affecting children in the United States. CDC provides a national number of cases by age on its [COVID-19 data tracker](#), but there are no geographic indicators provided and the age data are not released on a regular schedule. Our data collection method allows for tracking the number of child cases weekly, as well as providing publicly reported case numbers for children at the state level.

Q: *The age ranges for children in the report are broad – why were these age ranges chosen and are data available for more specific age ranges of children?*

A: Each state makes different decisions about how to report the age distribution of COVID-19 cases, and as a result the age range for reported cases varies by state. For the purposes of this report it is not possible to standardize more detailed age ranges for children based on what is publicly available from the states at this time. Please refer to specific state health department websites of interest to see if the state provides more granular detail of cases by age (see report Appendix for links to all state data sources).

Q: *What is the definition of a COVID-19 case?*

A: COVID-19 cases are defined as persons who have been identified as a confirmed (via a diagnostic molecular test) or probable (via a clinical diagnosis) case. COVID-19 cases are reported by the states, [following reporting standards established by the CDC](#). For more information on the definitions of confirmed and probable cases, see the following resources: [COVID Tracking Project: Definitions](#); [CDC, COVID-19 Data and Surveillance](#).

Q: *Why are only a small portion (<5%) of child COVID-19 cases included for Texas?*

A: Texas Department of State Health Services reports overall confirmed cases but only a small fraction are included in the age distribution. Other sources for child COVID-19 cases are not included in the report but outline much higher numbers (eg, [Texas Public Schools COVID-19 Data](#)).

Q: *Why does the report not provide the percent of child cases that were symptomatic vs. asymptomatic or that had underlying conditions?*

A: For the report, we are limited to the data that states are making publicly available. At this time, states are not providing data related to symptoms or underlying conditions and age. CDC provides some information on COVID-19 hospitalizations by age on the [CDC COVID-NET dashboard](#).

Q: *For the child population for each state, does that match the listed age range for the state's child COVID-19 data?*

A: Yes, the report uses child population numbers that match on directly with the listed age range for children provided by each state. State population numbers were obtained from the [US Census Bureau](#).

Q: *The report provides “cumulative totals” for cases, tests, hospitalizations, and deaths for available states. Are those the total numbers since the states began reporting, or since the AAP and CHA started collecting this data?*

A: All “cumulative total” data represent cumulative counts since states began reporting COVID-19 data.

Q: *How can I learn more about COVID-19 cases in my state?*

A: Links to all state data sources are provided in the Appendix.

Q: *Are these data final?*

A: No. All data reported by state/local health departments included in this report are preliminary and subject to change and revision as health departments gather more information.

Q: *Is this the most recent report available? When will a new report be released?*

A: The most recent version of the report is available for [download on the AAP website](#). New reports are made available on a weekly basis at [aap.org/CovidStateData](#).

Additional Resources

- For more information about COVID-19 data in your area, we encourage you to reach out to your state and local health department officials
- Visit the [AAP Critical Updates](#) site for daily updates, resources, and guidance on COVID-19 and pediatrics
- For COVID-19 articles for parents in English and Spanish, visit [HealthyChildren.org](#), the parenting website of the AAP

Contact Information

This a joint report from the American Academy of Pediatrics and the Children's Hospital Association

- For technical questions, please contact the authors at:

Bill Cull, PhD

Director, Health Services Research

American Academy of Pediatrics

wcull@aap.org

Mitch Harris, PhD

Director of Research

Children's Hospital Association

Mitch.Harris@childrenshospitals.org

- For media inquiries, please contact:

Lisa Black

Media Relations

American Academy of Pediatrics

lblack@aap.org

Gillian Ray

External Relations

Children's Hospital Association

Gillian.Ray@childrenshospitals.org

Acknowledgements

Special thanks to the following individuals for their contributions to this report: Alex Rothenburger, MPA (Children's Hospital Association), Vinson Do (Children's Hospital Association), Lynn Olson, PhD (American Academy of Pediatrics), Blake Sisk, PhD (American Academy of Pediatrics), Mary Pat Frintner, MSPH (American Academy of Pediatrics), Liz Gottschlich, MA (American Academy of Pediatrics), Kate Kornfeind, MPH (American Academy of Pediatrics), and Chloe Somberg (American Academy of Pediatrics)