

Children and COVID-19: State Data Report

A joint report from the American Academy of Pediatrics and the Children's Hospital Association
Summary of publicly reported data from 49 states, NYC, DC, PR, and GU

Version: 6/9/22

Note: Data Limitations. The numbers in this report represent cumulative counts since states began reporting. The data are based on how public agencies collect, categorize and post information. All data reported by state/local health departments are preliminary and subject to change and reporting may change over time. Notably, in the summer of 2021 and winter of 2022, some states have revised cases counts previously reported, begun reporting less frequently, or dropped metrics previously reported. For example, due to several changes on their dashboards and the data currently available, AL, TX, HI, DC, MS, SC, and NE data in this report are not current (cumulative data through 7/29/21, 8/26/21, 1/13/22, 3/3/22, 3/10/22, 4/28/22, and 5/12/22 respectively). Additionally, as of 3/17/22, FL published case and death data available every other week. Readers should consider these factors. States may have additional information on their web sites.

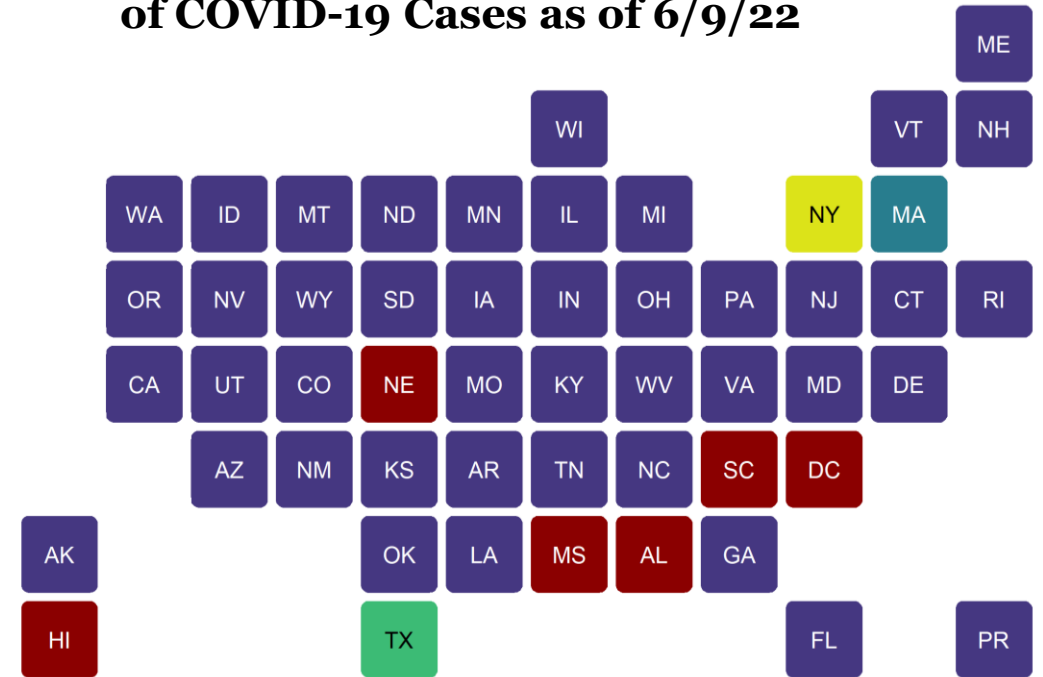
Changes in testing and how states report might affect week to week comparisons. The extremely high volume of cases during the Omicron surge followed by the sharp decline in cases may have created discontinuities in state reports week to week. Shortages of COVID-19 tests during surges and the increasing use of COVID-19 home tests likely affect the undercounting of COVID-19 cases. During holiday weeks states may change their reporting schedules which may cause irregularities in trends. At times when COVID-19 transmission is low, states might reduce the frequency information is updated. For children, the periods when school is not in session might reduce the volume of testing and reporting. Beginning in March 2022, several states shifted to updating data one to two times a week.

On 5/19/22, TX released new data that is NOT included in cumulative case counts or figures but located here and in Appendix 3B of this report (1,184,990 cumulative child cases as of 5/19/22); TX previously reported age for only a small proportion of total cases each week (eg, 2-20%); these cumulative cases through 8/26/21 are included (7,754).

COVID-19: Available Data for Children

- State-level reports are the best publicly available data on COVID-19 cases in children
- Starting in June 2021, some states reported less frequently and dropped metrics previously reported as overall cases decreased
- This report summarizes what was available on 6/9/22
- **49 states, NYC, DC, Puerto Rico and Guam** provided age distributions of reported COVID-19 cases
 - 25 states and NYC provided age distribution of hospitalizations
 - 46 states, NYC, PR and Guam provided age distribution of deaths

Fig 1A: States Reporting Age Distribution of COVID-19 Cases as of 6/9/22



Reporting age distribution of COVID-19 cases:

- Yes: Reported age distribution of cases
- TX: Reported age distribution for only 2% of cases; Cases through 8/26/21
- NY: Only NYC reported age distribution of cases
- MA: Only reported age distribution of cases added in past 2 weeks
- AL: Cases through 7/29/21 HI: Cases through 1/13/22
- DC: Cases through 3/3/22 MS: Cases through 3/10/22
- SC: Cases through 4/28/22 NE: Cases through 5/12/22

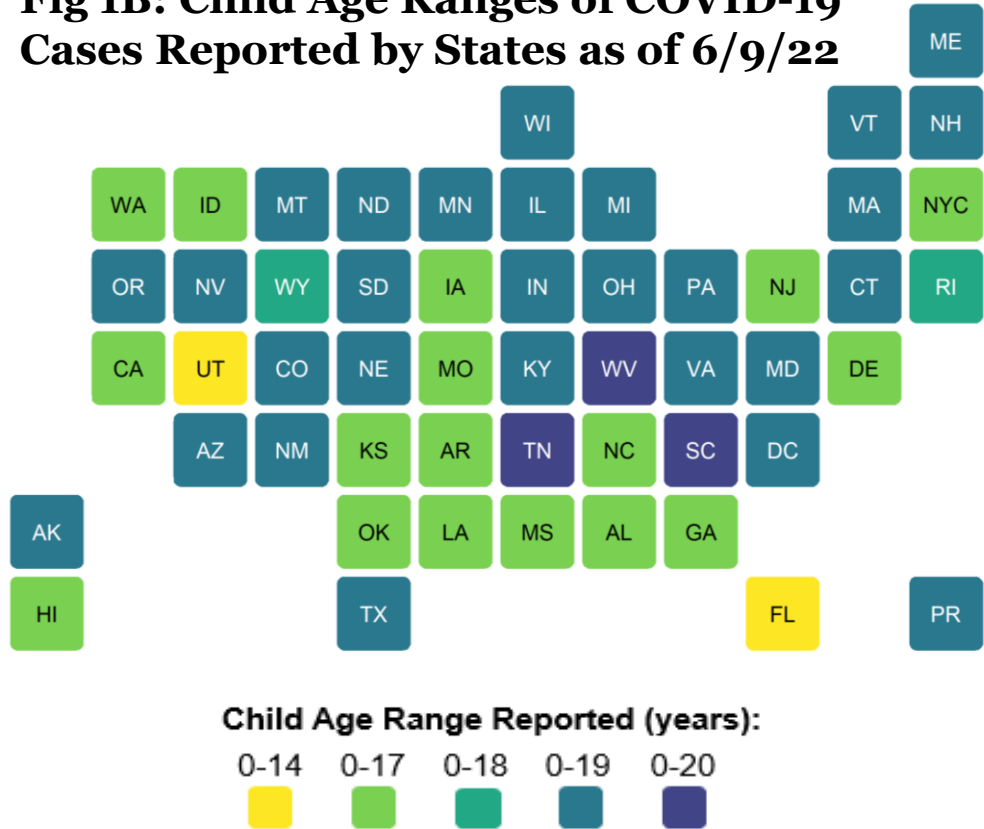
See detail in Appendix: Data from 49 states, NYC, DC, PR, and GU
 Analysis by American Academy of Pediatrics and Children's Hospital Association
 All data reported by state/local health departments are preliminary and subject to change

Children and COVID-19: Data Limitations

General Limitations

- Format, content, and metrics of reported COVID-19 data differed substantially by state
- Definition of “child”: Age ranges reported for children varied by state (0-14, 0-17, 0-18, 0-19, and 0-20 years; see Fig 1B)
- Unknown: Number of children infected but not tested and confirmed

Fig 1B: Child Age Ranges of COVID-19 Cases Reported by States as of 6/9/22



State-Level Changes

- TX: Age distribution reported for only 2% of confirmed cases (99,989/5,671,541) resulting in an undercount of child cases; TX cumulative cases through 8/26/21. As of 5/19/22, TX released new data that is NOT included in cumulative case counts or figures but located [here](#) and in Appendix 3B of this report
- NY: Did not provide age distribution for state-wide cases (NYC only)
- AL: As of 8/13/20, changed definition of child case from 0-24 to 0-17 years; as of 9/17/20, provided age distribution for confirmed cases only; as of 8/5/21, due to change in data available, AL cumulative cases and deaths through 7/29/21
- HI: As of 8/27/20, changed definition of child case from 0-19 to 0-17 years; As of 1/20/22, due to change in available data, HI cumulative cases, hospitalizations, and deaths through 1/13/22
- MA: As of 9/3/20, revised definition of probable case, leading to a reduction in total case count, and changed reporting from total child cases to cases added in last two weeks
- RI: As of 9/10/20, changed definition of child case from 0-19 to 0-18 years
- MO: As of 10/1/20, changed definition of child cases from 0-19 to 0-17 years; As of 4/7/22, due to change in available data, MO cumulative deaths through 3/31/22
- PR: As of 3/11/21, due to a change in data available, a calculation was required to obtain confirmed and probable child case totals, leading to a reduction in total child case count
- AK: On 6/17/21, did not report child hospitalizations or child deaths
- FL: As of 6/24/21, stopped reporting child hospitalizations; due to change in data available, calculation required to obtain child cases for 0-14 years; As of 3/17/22, available case and death data updated every other week
- LA: As of 8/5/21, changed reporting total cases and deaths from confirmed to confirmed and probable (combined)
- WV: As of 8/12/21, WV changed definition of child case from 0-19 to 0-20 years
- WA: As of 1/13/22, due to a change in data available, WA cumulative hospitalizations and deaths through 1/6/22; As of 3/10/22, changed definition of child case from 0-19 to 0-17
- IA: As of 2/17/22, due to a change in available data, IA cumulative deaths through 2/10/22
- DC: As of 3/10/22, due to change in available data, DC cumulative cases and deaths through 3/3/22
- MS: As of 3/17/22, due to change in available data, MS cumulative cases, hospitalizations, and deaths through 3/10/22
- KS: As of 4/14/22, due to change in available data, KS cumulative hospitalizations through 4/7/22
- CO: As of 4/28/22, due to change in available data, CO cumulative hospitalizations through 4/21/22
- SC: As of 5/5/22, due to change in available data, SC cumulative cases, hospitalizations, and deaths through 4/28/22
- VT: As of 5/19/22, due to change in available data, VT cumulative deaths through 5/12/22
- NE: As of 5/19/22, due to change in available data, NE cumulative cases, hospitalizations, and deaths through 5/12/22

See detail in Appendix: Data from 49 states, NYC, DC, PR, and GU; Analysis by American Academy of Pediatrics and Children’s Hospital Association; All data reported by state/local health departments are preliminary and subject to change

Children and COVID-19: 6/9/22

Summary of State-Level Data Provided in this Report*

Detail and links to state/local data sources provided in Appendix

Cumulative Number of Child COVID-19 Cases*

- 13,541,153 total child COVID-19 cases reported, and children represented 18.9% (13,541,153/71,733,195) of all cases
- Overall rate: 17,991 cases per 100,000 children in the population

Change in Child COVID-19 Cases*

- 87,644 child COVID-19 cases were reported the past week from 6/2/22-6/9/22 (13,453,509 to 13,541,153) and children represented 13.8% (87,644/635,980) of the weekly reported cases
- Over two weeks, 5/26/22-6/9/22, there was a 1% increase in the cumulated number of child COVID-19 cases (175,018 cases added (13,366,135 to 13,541,153))

Cumulative Hospitalizations (25 states and NYC reported)*

- Among states reporting, children ranged from 1.3%-4.6% of their total cumulated hospitalizations, and 0.1%-1.5% of all their child COVID-19 cases resulted in hospitalization

Cumulative Mortality (46 states, NYC, PR and GU reported)*

- Among states reporting, children were 0.00%-0.32% of all COVID-19 deaths, and 1 state reported zero child deaths
- In states reporting, 0.00%-0.02% of all child COVID-19 cases resulted in death

See detail in Appendix: Data from 49 states, NYC, DC, PR, and GU; Analysis by American Academy of Pediatrics and Children's Hospital Association

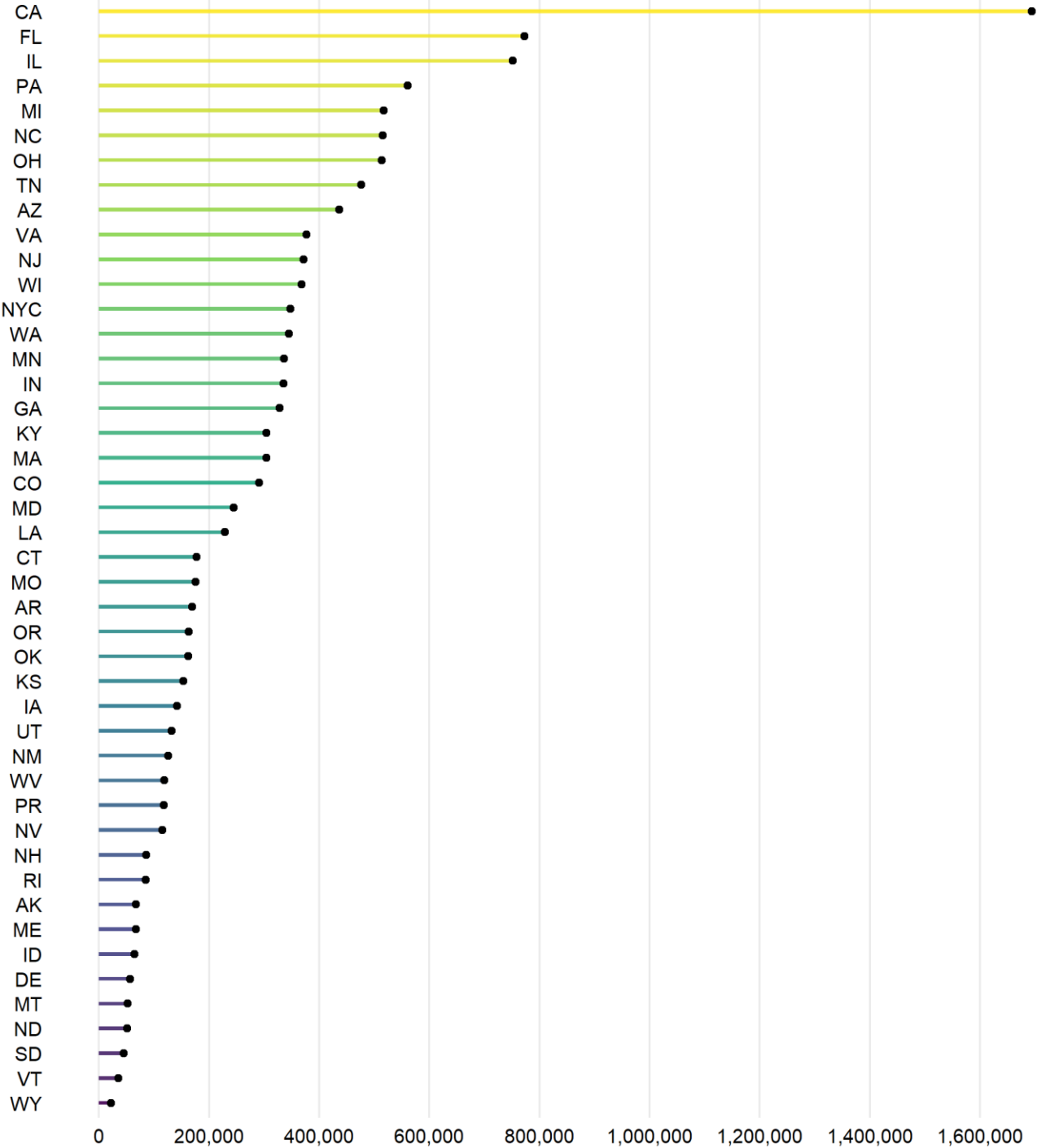
* Note: Data Limitations. The numbers in this report represent cumulative counts since states began reporting. The data are based on how public agencies collect, categorize and post information. All data reported by state/local health departments are preliminary and subject to change and reporting may change over time. Notably, in the summer of 2021 and winter of 2022, some states have revised cases counts previously reported, begun reporting less frequently, or dropped metrics previously reported. For example, due to several changes on their dashboards and the data currently available, AL, TX, HI, DC, MS, SC and NE data in this report are not current (cumulative data through 7/29/21, 8/26/21, 1/13/22, 3/3/22, 3/10/22, 4/28/22, and 5/12/22 respectively). Additionally, as of 3/17/22, FL published case and death data available every other week. Readers should consider these factors. States may have additional information on their web sites.

Changes in testing and how states report might affect week to week comparisons. The extremely high volume of cases during the Omicron surge followed by the sharp decline in cases may have created discontinuities in state reports week to week. Shortages of COVID-19 tests during surges and the increasing use of COVID-19 home tests likely affect the undercounting of COVID-19 cases. During holiday weeks states may change their reporting schedules which may cause irregularities in trends. At times when COVID-19 transmission is low, states might reduce the frequency information is updated. Beginning in March 2022 several states shifted to updating data one to two times a week.

On 5/19/22, TX released new data that is NOT included in cumulative case counts or figures but located [here](#) and in Appendix 3B of this report (1,184,990 cumulative child cases as of 5/19/22); TX previously reported age for only a small proportion of total cases each week (eg, 2-20%); these cumulative cases through 8/26/21 are included (7,754).

Fig 2. Cumulative Number of Child COVID-19 Cases: 6/9/22

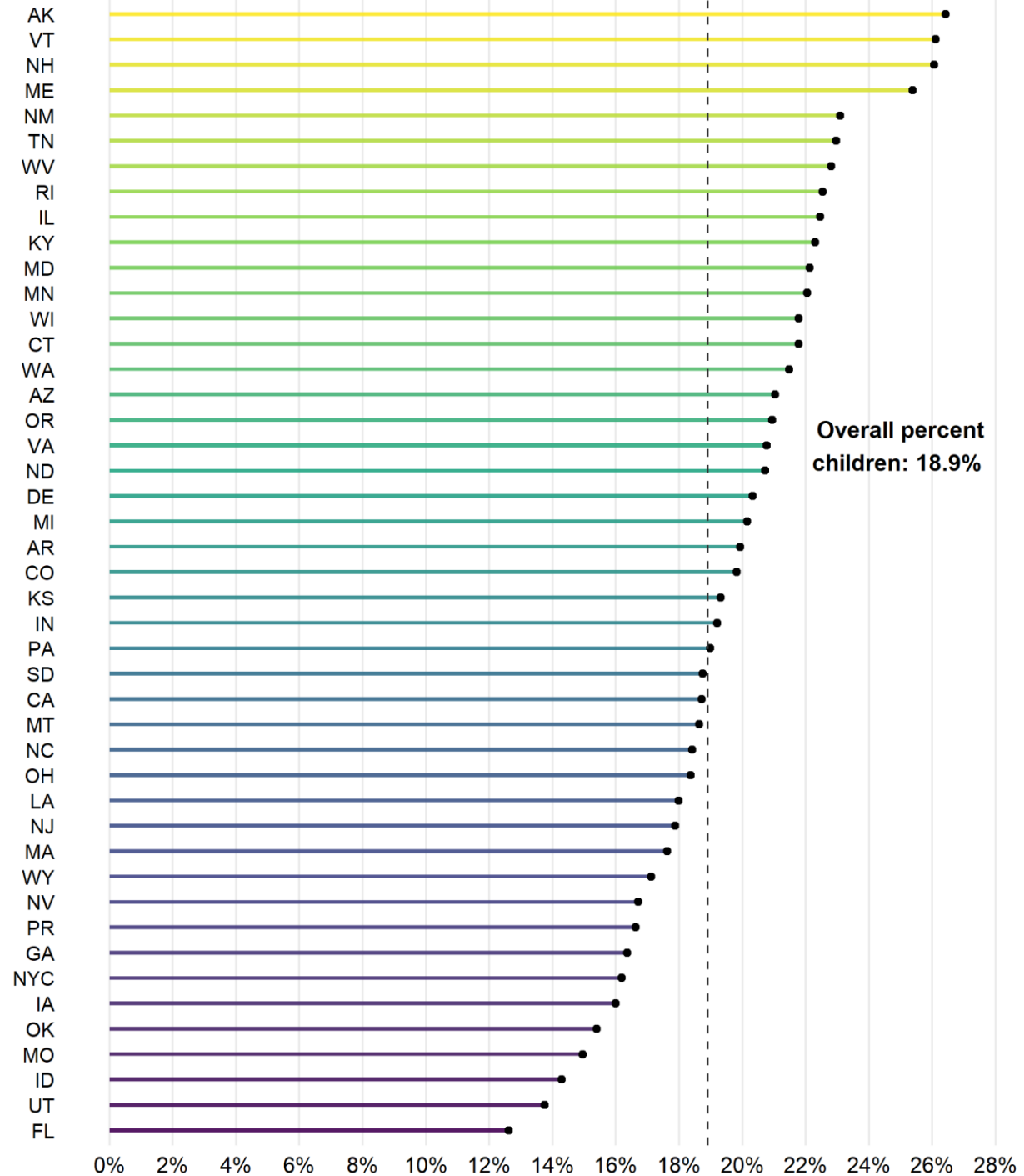
- 13,541,153 total child COVID-19 cases (cumulative)
- Among states reporting:
 - Nine states reported 400,000+ child cases
 - Three states reported fewer than 50,000 child cases



See detail in Appendix: Data from 48 states, NYC, DC, PR, and GU (TX excluded from figure)
 All data reported by state/local health departments are preliminary and subject to change
 Analysis by American Academy of Pediatrics and Children's Hospital Association
 For 6 states, due to available data and changes made to dashboards, cumulative child cases and total cases for all ages are not current: AL through 7/29/21, HI through 1/13/22, DC through 3/3/22, MS through 3/10/22, SC through 4/28/22, and NE through 5/12/22. These 6 states, TX, and GU are not included in the figure.
 As of 6/9/22, due to available data for FL (case data updated every other week), child and total cases averaged across 2 week period accordingly

Fig 3. Percent of Cumulative COVID-19 Cases that were Children: 6/9/22

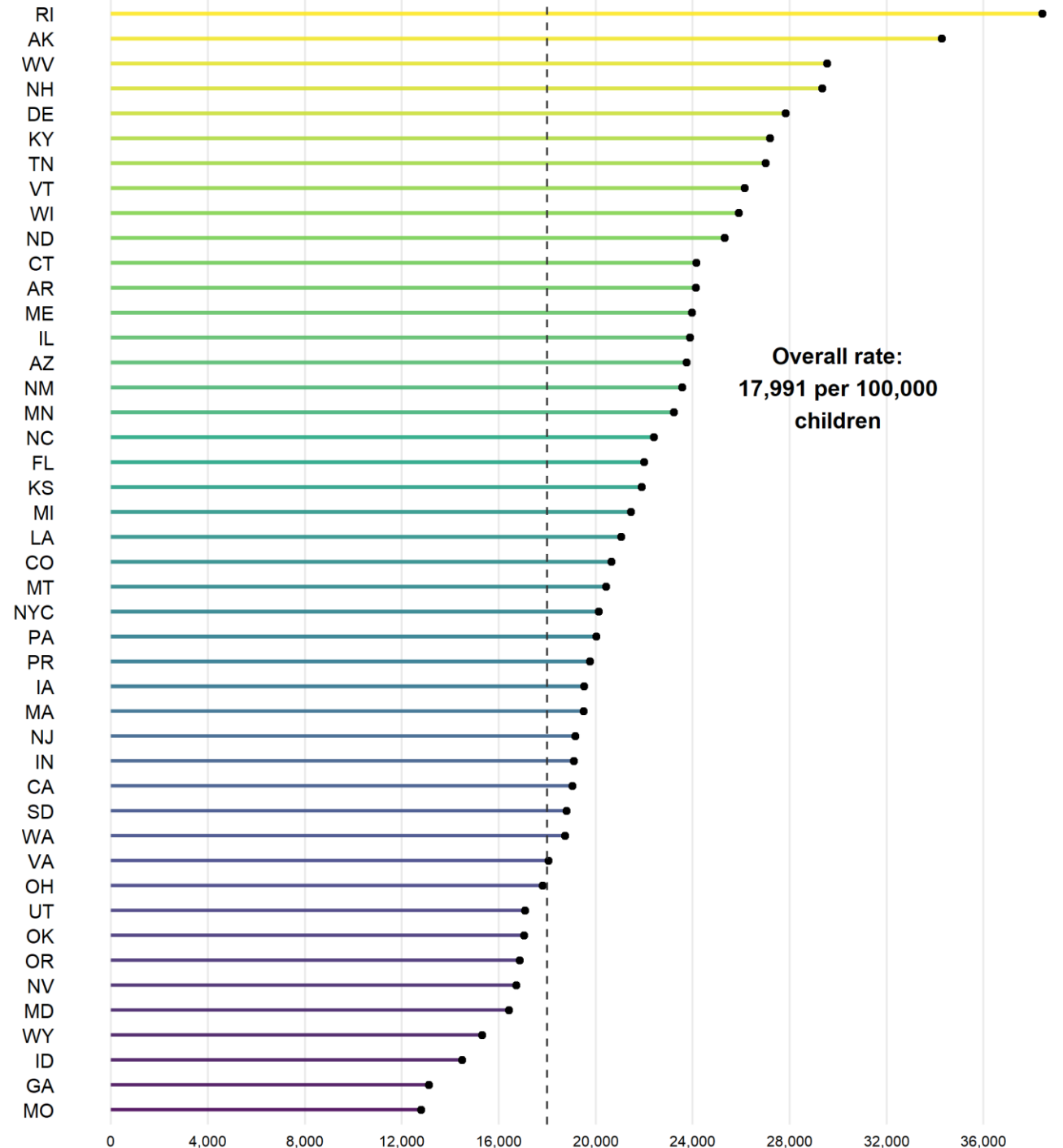
- Children represented 18.9% (13,541,153/71,33,195) of all available cases
- Among states reporting:
 - Twelve states reported 22% or more of cumulated cases were children



See detail in Appendix: Data from 48 states, NYC, DC, PR, and GU (TX excluded from figure)
 All data reported by state/local health departments are preliminary and subject to change
 Analysis by American Academy of Pediatrics and Children's Hospital Association
 For 6 states, due to available data and changes made to dashboards, cumulative child cases and total cases for all ages are not current: AL through 7/29/21, HI through 1/13/22, DC through 3/3/22, MS through 3/10/22, SC through 4/28/22, and NE through 5/12/22. These 6 states, TX, and GU are not included in the figure.
 As of 6/9/22, due to available data for FL (case data updated every other week), child and total cases averaged across 2 week period accordingly

Fig 4. Cumulative COVID-19 Cases per 100,000 Children: 6/9/22

- Calculated using state-level population estimates from US Census Bureau (2019)*
- Overall rate: 17,991 child COVID-19 cases per 100,000 children in the population
- Among states reporting:
 - Twelve states reported more than 24,000 cases per 100,000



See detail in Appendix: Data from 48 states, NYC, DC, PR, and GU (TX excluded from figure)
 All data reported by state/local health departments are preliminary and subject to change
 Analysis by American Academy of Pediatrics and Children's Hospital Association
 For 6 states, due to available data and changes made to dashboards, cumulative child cases and total cases for all ages are not current: AL through 7/29/21, HI through 1/13/22, DC through 3/3/22, MS through 3/10/22, SC through 4/28/22, and NE through 5/12/22. These 6 states, TX, and GU are not included in the figure.
 As of 6/9/22, due to available data for FL (case data updated every other week), child and total cases averaged across 2 week period accordingly
 * Source: US Census Bureau, State Population by Characteristics: 2010-2019,
<https://www.census.gov/data/tables/time-series/demo/popest/2010s-state-detail.html>

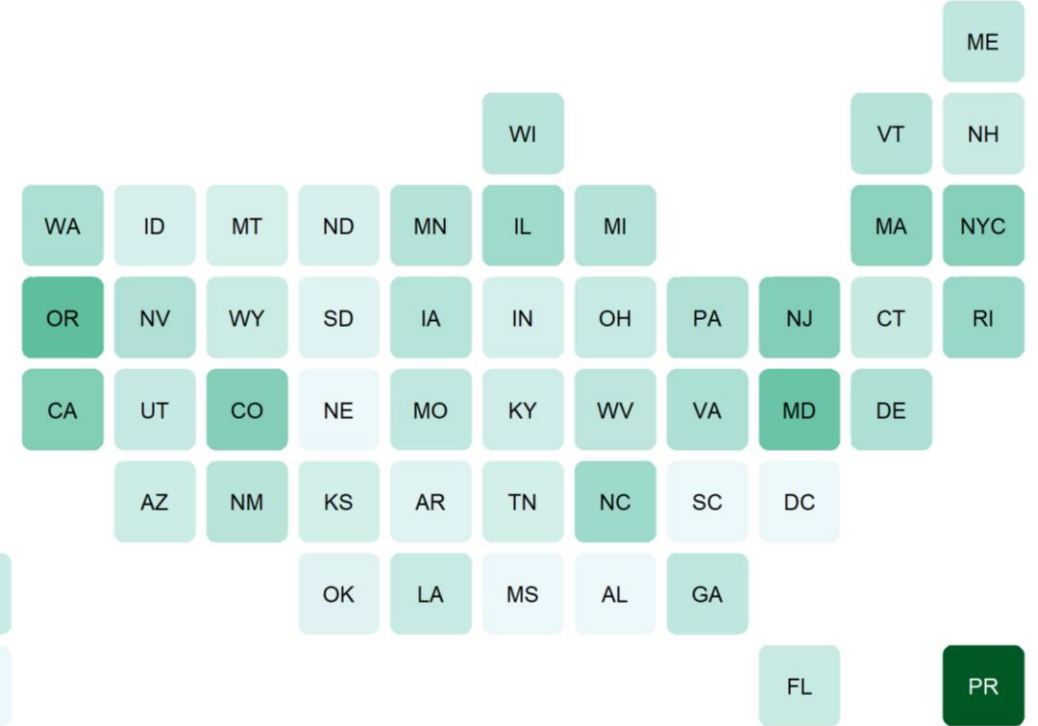
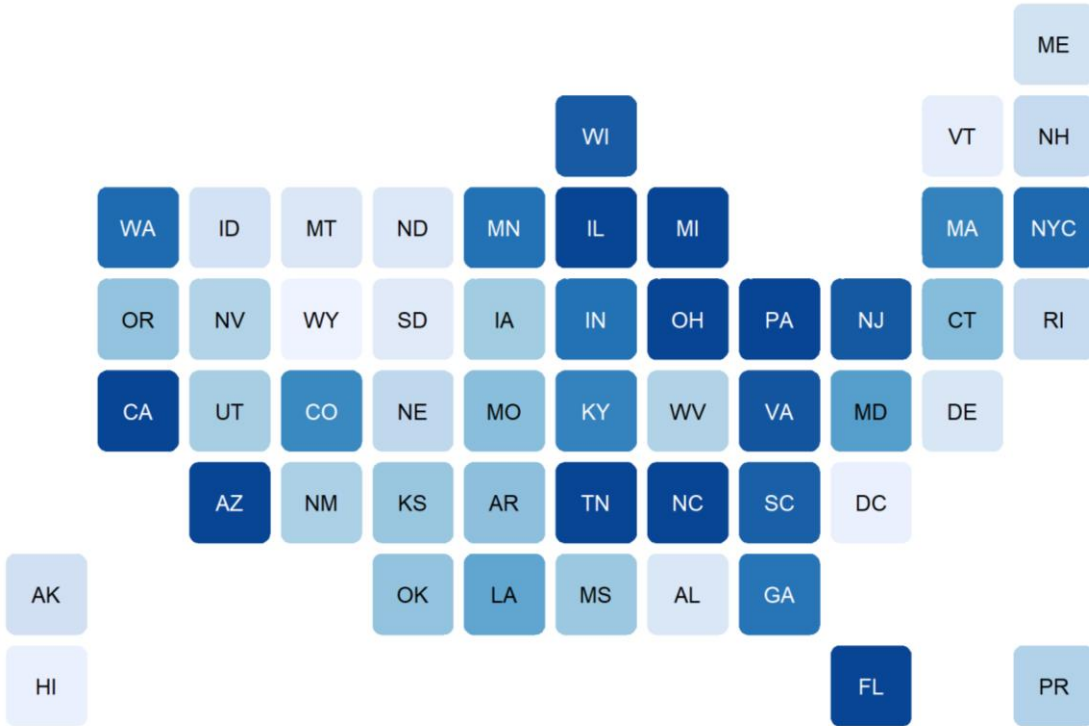
Fig 5. Cumulative Child COVID-19 Cases and Percent Increase in Child Cases

A. Cumulative Child COVID-19 Cases, 6/9/22

9 states with 400,000+ cumulative child cases

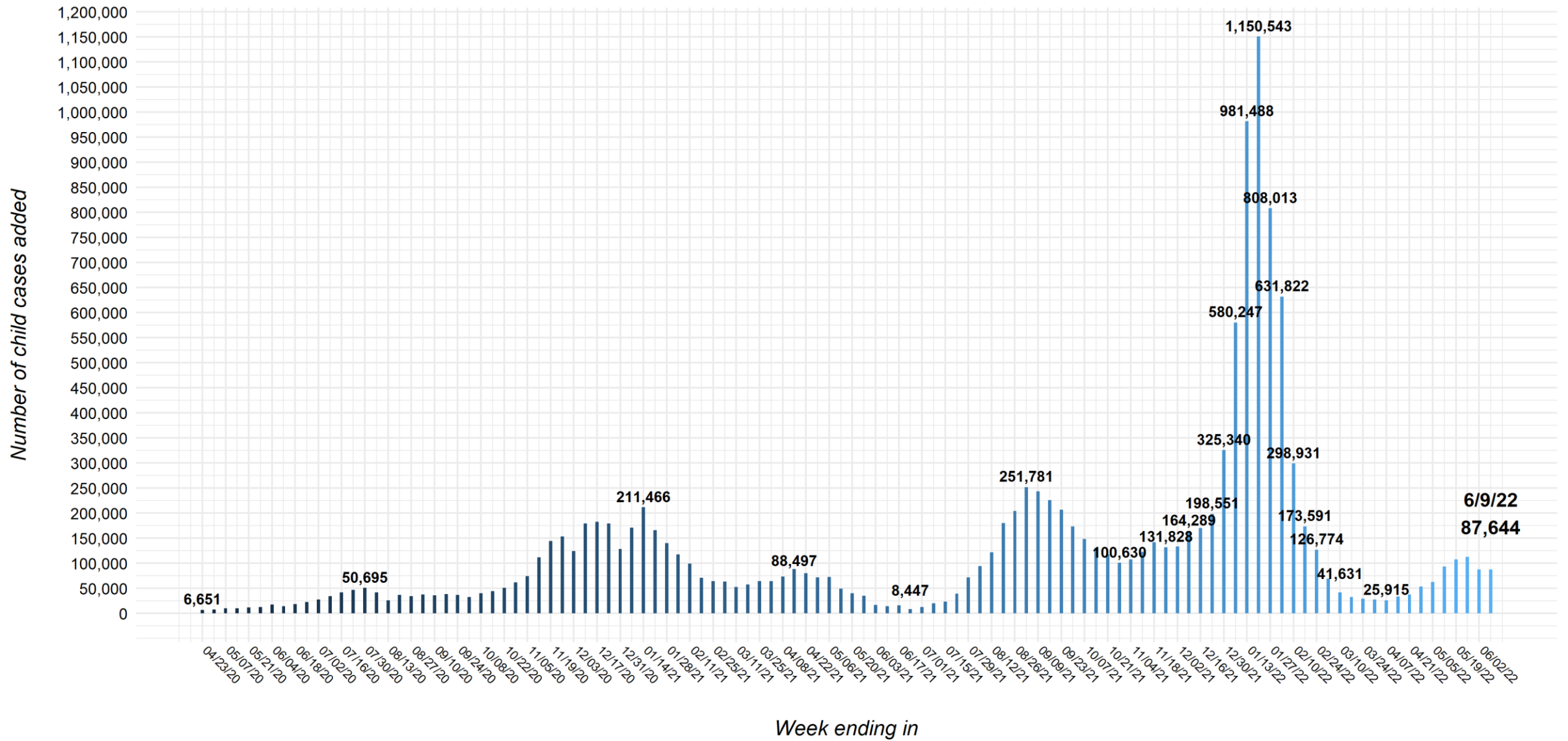
B. Percent Increase in Child Cases, 5/26/22-6/9/22

From 5/26-6/9, there were 175,018 child cases added (13,366,135 to 13,541,153; 1% increase)



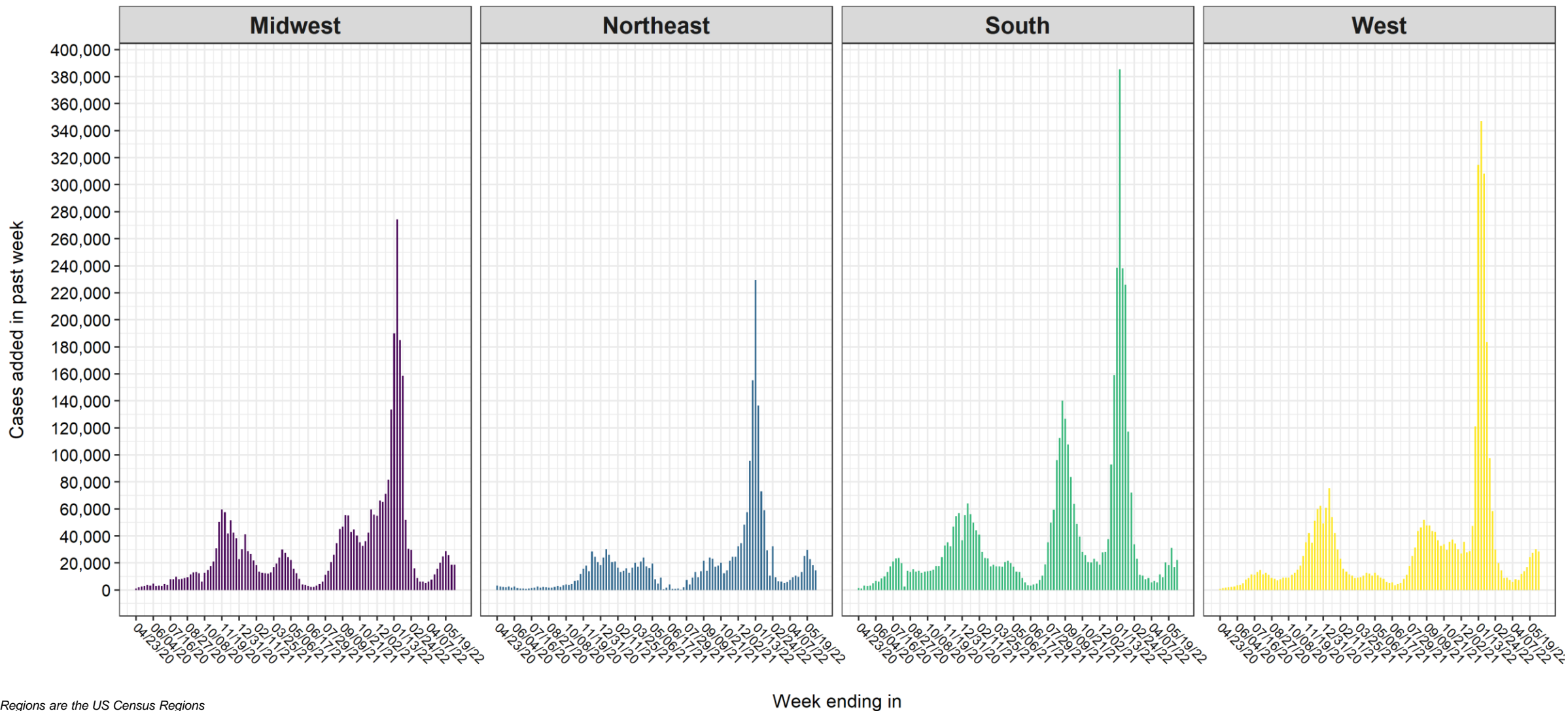
See detail in Appendix: Data from 48 states, NYC, DC, and PR (TX excluded from figures)
 All data reported by state/local health departments are preliminary and subject to change; Analysis by American Academy of Pediatrics and Children's Hospital Association
 Due to available data and calculations required to obtain MA child cases, weekly estimates fluctuate
 For 6 states, due to available data and changes made to dashboards, cumulative child cases and total cases for all ages are not current: AL through 7/29/21, HI through 1/13/22, DC through 3/3/22, MS through 3/10/22, SC through 4/28/22, and NE through 5/12/22
 As of 6/9/22, due to available data for FL (case data updated every other week), child and total cases averaged across 2 week period accordingly

Fig 6. United States: Number of Child COVID-19 Cases Added in Past Week*



* Note: 6 states changed their definition of child cases: AL as of 8/13/20, HI as of 8/27/20, RI as of 9/10/20, MO as of 10/1/20, WV as of 8/12/21, WA as of 3/10/22
 On 5/19/22, TX released new data that is NOT included in cumulative case counts or figures but located [here](#) and in Appendix 3B of this report (1,184,990 cumulative child cases as of 5/19/22); TX previously reported age for only a small proportion of total cases each week (eg, 2-20%); these cumulative cases through 8/26/21 are included (7,754)
 Due to available data and calculations required to obtain MA child cases, weekly estimates fluctuate
 For 6 states, due to available data and changes made to dashboards, cumulative child cases and total cases for all ages are not current: AL through 7/29/21, HI through 1/13/22, DC through 3/3/22, MS through 3/10/22, SC through 4/28/22, and NE through 5/12/22
 As of 6/9/22, due to available data for FL (case data updated every other week), child and total cases averaged across 2 week period accordingly
 See detail in Appendix: Data from 49 states, NYC, DC, PR and GU
 All data reported by state/local health departments are preliminary and subject to change; Analysis by American Academy of Pediatrics and Children's Hospital Association

Fig 7. United States: Child COVID-19 Cases Added in Past Week, by Region* 4/23/20 to 6/9/22



* Note: Regions are the US Census Regions

6 states changed their definition of child cases: AL as of 8/13/20, HI as of 8/27/20, RI as of 9/10/20, MO as of 10/1/20, WV as of 8/12/21, WA as of 3/10/22

On 5/19/22, TX released new data that is NOT included in cumulative case counts or figures but located [here](#) and in Appendix 3B of this report (1,184,990 cumulative child cases as of 5/19/22);

TX previously reported age for only a small proportion of total cases each week (eg, 2-20%); these cumulative cases through 8/26/21 are included (7,754)

Due to available data and calculations required to obtain MA child cases, weekly estimates fluctuate

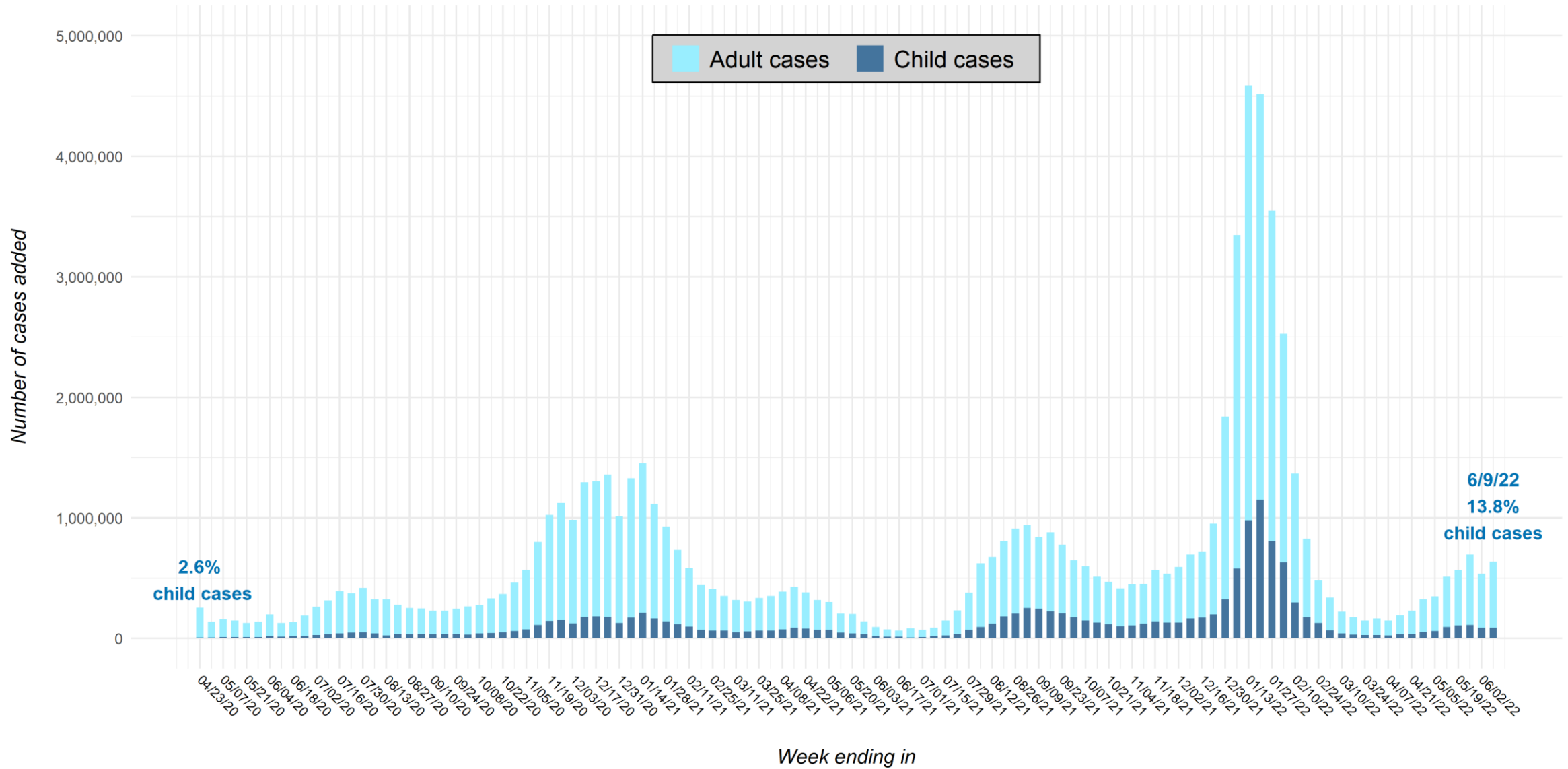
For 6 states, due to available data and changes made to dashboards, cumulative child cases and total cases for all ages are not current: AL through 7/29/21, HI through 1/13/22, DC through 3/3/22, MS through 3/10/22, SC through 4/28/22, and NE through 5/12/22

As of 6/9/22, due to available data for FL (case data updated every other week), child and total cases averaged across 2 week period accordingly

See detail in Appendix: Data from 49 states, NYC, DC, PR and GU

All data reported by state/local health departments are preliminary and subject to change; Analysis by American Academy of Pediatrics and Children's Hospital Association

Fig 8. United States: Number of COVID-19 Cases Added in Past Week for Children and Adults*



* Note: 6 states changed their definition of child cases: AL as of 8/13/20, HI as of 8/27/20, RI as of 9/10/20, MO as of 10/1/20, WV as of 8/12/21, WA as of 3/10/22

On 5/19/22, TX released new data that is NOT included in cumulative case counts or figures but located [here](#) and in Appendix 3B of this report (1,184,990 cumulative child cases as of 5/19/22); TX previously reported age for only a small proportion of total cases each week (eg, 2-20%); these cumulative cases through 8/26/21 are included (7,754)

Due to available data and calculations required to obtain MA child cases, weekly estimates fluctuate

For 6 states, due to available data and changes made to dashboards, cumulative child cases and total cases for all ages are not current: AL through 7/29/21, HI through 1/13/22, DC through 3/3/22, MS through 3/10/22, SC through 4/28/22, and NE through 5/12/22

As of 6/9/22, due to available data for FL (case data updated every other week), child and total cases averaged across 2 week period accordingly

See detail in Appendix: Data from 49 states, NYC, DC, PR and GU

All data reported by state/local health departments are preliminary and subject to change; Analysis by American Academy of Pediatrics and Children's Hospital Association

Appendix Table 1: Case Data Available on 6/9/22

Summary data across the 49 states, NYC, DC, PR, and GU that provided age distribution of reported COVID-19 cases*

Child population, 2019	Cumulative total cases (all ages)	Cumulative child cases	Cumulative percent children of total cases	Cases per 100,000 children
75,266,842	71,733,195	13,541,153	18.9%	17990.9

* Note: Data represent cumulative counts since states began reporting; All data reported by state/local health departments are preliminary and subject to change
 On 5/19/22, TX released new data that is NOT included in cumulative case counts or figures but located [here](#) and in Appendix 3B of this report (1,184,990 cumulative child cases as of 5/19/22);
 TX previously reported age for only a small proportion of total cases each week (eg, 2-20%); these cumulative cases through 8/26/21 are included (7,754)
 For 6 states, due to available data and changes made to dashboards, cumulative child cases and total cases for all ages are not current: AL through 7/29/21, HI through 1/13/22, DC through 3/3/22, MS through 3/10/22, SC through 4/28/22, and NE through 5/12/22
 As of 6/9/22, due to available data for FL (case data updated every other week), child and total cases averaged across 2 week period accordingly

Appendix Table 2A: Summary of Child Case Data from 4/16/20 – 6/9/22*

Date	Number of locations reporting age	Cumulative total cases (all ages)	Cumulative child cases [^]	Percent children of total cases	Cases per 100,000 children
6/9/22	49 states, NYC, DC, PR and GU [^]	71,733,195	13,541,153	18.9%	17990.1
6/2/22	49 states, NYC, DC, PR and GU [^]	71,097,215	13,453,509	18.9%	17874.4
5/26/22	49 states, NYC, DC, PR and GU	70,562,064	13,366,135	18.9%	17758.3
5/19/22	49 states, NYC, DC, PR and GU [^] ^Δ	69,867,027	13,253,639	19.0%	17608.9
5/12/22	49 states, NYC, DC, PR and GU [×]	69,301,598	13,146,499	19.0%	17466.5
5/5/22	49 states, NYC, DC, PR and GU [^] [«] [∨]	68,789,929	13,052,988	19.0%	17342.3
4/28/22	49 states, NYC, DC, PR and GU	68,440,359	12,990,521	19.0%	17259.3
4/21/22	49 states, NYC, DC, PR and GU [^]	68,116,040	12,937,304	19.0%	17188.6
4/14/22	49 states, NYC, DC, PR and GU [~] [¢]	67,888,798	12,900,231	19.0%	17139.3
4/7/22	49 states, NYC, DC, PR and GU [^]	67,697,074	12,867,085	19.0%	17095.3
3/31/22	49 states, NYC, DC, PR and GU	67,548,200	12,841,170	19.0%	17060.9
3/24/22	49 states, NYC, DC, PR and GU [^] [≡]	67,382,820	12,813,648	19.0%	17024.3
3/17/22	49 states, NYC, DC, PR and GU [▣] [∨]	67,233,212	12,784,627	19.0%	16985.7
3/10/22	49 states, NYC, DC, PR and GU [#] ⁺ ^{\$}	67,058,358	12,752,636	19.0%	16943.2
3/3/22	49 states, NYC, DC, PR and GU [«]	66,838,161	12,711,006	19.0%	16887.9
2/24/22	49 states, NYC, DC, PR and GU [#] [±] ⁺ ^{>} [∅]	66,497,922	12,642,165	19.0%	16797.5

* Note: Data represent cumulative counts since states began reporting; All data reported by state/local health departments are preliminary and subject to change

[^] Unknown: number of children infected but not tested and confirmed

[^] As of 6/9/22, due to available data for FL (case data updated every other week), child and total cases averaged across 2 week period accordingly;

On 3/24/22, 4/7/22, 4/21/22, 5/5/22, 5/19/22, & 6/2/22 FL cumulative child cases and cumulative cases for all ages not updated; data through previous week

^Δ As of 5/19/22, due to available data, NE cumulative child cases and total cases through 5/12/22

[×] On 5/12/22, due to available data for MO, cumulative cases through 5/5/22

[«] As of 5/5/22, due to available data, SC cumulative child cases and total cases through 4/28; 3/3/22, due to available data, SC revised case data resulting in a downward revision of cumulative child cases

[∨] On 5/5/22, due to available data, NV cumulative child cases and total cases through 4/28; On 3/17/22, due to available NV data and calculation required to obtain child total cases, there is a downward revision of cumulative child cases

[~] On 4/14/22, due to available data, WY experienced downward revision in cumulative child cases

[¢] On 4/14/22, due to available data, DE experienced downward revision in cumulative child cases and cumulative cases for all ages

[≡] On 3/24/22, due to available data, ND revised child case data resulting in a downward revision of cumulative child cases

[▣] As of 3/17/22, MS cumulative cases through 3/10/22

[#] For several weeks in 2022 (2/17), due to available data and calculations required to obtain child cases, there is a downward revision of cumulative child cases for MA; On 3/10/22, due to available data and calculations required, cumulative child cases through 3/3/22

⁺ On 2/24/22, DC cumulative child cases through 2/17/22; As of 3/10/22, DC cumulative cases through 3/3/22

^{\$} As of 3/10/22, WA changed definition of child case from 0-19 to 0-17

[±] On 2/24/22, due to change in available data, IA experienced increase of 16,091 cumulative child cases

[>] On 2/24/22, due to available data, VA cumulative child cases through 2/17/22

[∅] On 2/24/22, due to data available, KS revised child case data resulting in downward revision of cumulative child cases

Appendix Table 2A, cont.: Summary of Child Case Data from 4/16/20 – 6/9/22*

Date	Number of locations reporting age	Cumulative total cases (all ages)	Cumulative child cases [^]	Percent children of total cases	Cases per 100,000 children
2/17/22	49 states, NYC, DC, PR and GU ^{# ±}	66,014,026	12,515,391	19.0%	16628.0
2/10/22	49 states, NYC, DC, PR and GU ⁺	65,187,326	12,341,801	18.9%	16397.4
2/3/22	49 states, NYC, DC, PR and GU ^Δ	63,819,973	12,042,870	18.9%	16000.2
1/27/22	49 states, NYC, DC, PR and GU ^{+ ▲ # >}	61,294,291	11,411,047	18.6%	15160.8
1/20/22	49 states, NYC, DC, PR and GU ^{+ ◊ •}	57,745,512	10,603,034	18.4%	14087.3
1/13/22	49 states, NYC, DC, PR and GU [≈]	53,230,820	9,452,491	17.8%	12558.6
1/6/22	49 states, NYC, DC, PR and GU ^{▲ ≈}	48,641,190	8,471,003	17.4%	11254.6
12/30/21	49 states, NYC, DC, PR and GU ⁻	45,294,534	7,890,756	17.4%	10483.7
12/23/21	49 states, NYC, DC, PR and GU ⁻	43,456,624	7,565,416	17.4%	10051.5
12/16/21	49 states, NYC, DC, PR and GU ^{○ -}	42,502,606	7,366,865	17.3%	9787.7
12/9/21	49 states, NYC, DC, PR and GU [○]	41,786,102	7,196,901	17.2%	9561.8
12/2/21	49 states, NYC, DC, PR and GU	41,090,717	7,032,612	17.1%	9343.6

* Note: Data represent cumulative counts since states began reporting; All data reported by state/local health departments are preliminary and subject to change

[^] Unknown: number of children infected but not tested and confirmed

[#] For several weeks in 2022 (1/27 & 2/17), due to available data and calculations required to obtain child cases, there is a downward revision of cumulative child cases for MA

[±] On 2/17/22, due to available data IA cumulative child cases and cumulative cases for all ages through 2/10/22

⁺ On 2/10/22, DC cumulative child cases through 2/3/22; On 1/20/22 and 1/27/22, DC cumulative child cases through 1/13/22

^Δ As of 2/3/22, NE cases by age are again available and included for 6/24/21 through 2/3/22, resulting in an increase of 53,069 child cases and 220,489 total cases

[▲] On 1/6/22, due to available data, GU cumulative child cases through 12/30/21; On 1/27/22, due to available data, GU cumulative child cases and cumulative cases for all ages through 1/20/22

[>] On 1/27/22, due to available data, VA cumulative child cases through 1/20/22;

[◊] As of 1/20/22, due to data available, HI cumulative child cases and cumulative cases for all ages through 1/13/22

[•] As of 1/20/22, TX released new data that is NOT included in cumulative case counts or figures but located in Appendix 3B of this report (774,083 cumulative child cases)

[≈] On 1/6/22 and 1/13/22, due to available data, OK cumulative child cases through 12/30/21

⁻ On 12/16/21 & 12/23/21, due to available data, MD child cases through 12/9/21; On 12/30/21, due to lag in reporting, MD experienced a very large increase in child cases (eg, 30,764 cases added)

[○] On 12/9/21, due to available data, RI cumulative cases through 12/2/21; On 12/16/21, due to lag in reporting, RI experienced a large increase in child cases (eg, 3,285 cases added)

Appendix Table 2A, cont.: Summary of Child Case Data from 4/16/20 – 6/9/22*

Date	Number of locations reporting age	Cumulative total cases (all ages)	Cumulative child cases [^]	Percent children of total cases	Cases per 100,000 children
11/25/21	49 states, NYC, DC, PR and GU [■] +	40,497,291	6,899,590	17.0%	9166.8
11/18/21	49 states, NYC, DC, PR and GU	39,961,694	6,767,762	16.9%	8991.7
11/11/21	49 states, NYC, DC, PR and GU [#]	39,397,035	6,625,857	16.8%	8803.2
11/4/21	49 states, NYC, DC, PR and GU	38,944,914	6,503,629	16.7%	8640.8
10/28/21	49 states, NYC, DC, PR and GU [#]	38,496,700	6,396,278	16.6%	8498.1
10/21/21	49 states, NYC, DC, PR and GU	38,080,641	6,295,648	16.5%	8364.4
10/14/21	49 states, NYC, DC, PR and GU	37,611,563	6,177,563	16.4%	8208.1
10/7/21	49 states, NYC, DC, PR and GU [#]	37,099,164	6,047,371	16.3%	8034.6
9/30/21	49 states, NYC, DC, PR and GU	36,501,460	5,899,148	16.2%	7837.6
9/23/21	49 states, NYC, DC, PR and GU	35,852,579	5,725,680	16.0%	7607.2
9/16/21	49 states, NYC, DC, PR and GU [#]	35,077,099	5,518,815	15.7%	7332.3
9/9/21	49 states, NYC, DC, PR and GU	34,198,122	5,292,837	15.5%	7032.1
9/2/21	49 states, NYC, DC, PR and GU	33,357,284	5,049,465	15.1%	6708.8
8/26/21	49 states, NYC, DC, PR and GU [#] •	32,417,814	4,797,683	14.8%	6374.2
8/19/21	49 states, NYC, DC, PR and GU	31,506,988	4,593,721	14.6%	6103.2
8/12/21	49 states, NYC, DC, PR and GU [♦]	30,700,985	4,413,547	14.4%	5863.9
8/5/21	49 states, NYC, DC, PR and GU [#] × ≠	30,025,995	4,292,120	14.3%	5702.5

* Note: Data represent cumulative counts since states began reporting; All data reported by state/local health departments are preliminary and subject to change

[^] Unknown: number of children infected but not tested and confirmed

■ Due to the Thanksgiving holiday, most data included for 11/25/21 were posted by States on 11/24/21

+ On 11/25/21, due to available data, DC cumulative child cases through 11/18/21

On 11/11/21, MA added 5,437 child cases; For several weeks in 2021 (8/5, 8/26, 9/16, 10/7, and 10/28), due to available data and calculations required to obtain child cases, there is a downward revision of cumulative child cases for MA

• As of 7/22/21, TX stopped updating demographic case data; As of 8/26/21, TX started updating demographic case data again and added 2,147 child cases; TX cumulative cases through 8/26/21

♦ As of 8/12/21, WV changed definition of child case from 0-19 to 0-20 years

× As of 8/5/21, due to available data and changes made to dashboard, AL cumulative cases through 7/29/21

≠ On 8/5/21, due to available data and changes made to dashboard, definition of LA total cumulative total cases changed

Appendix Table 2A, cont.: Summary of Child Case Data from 4/16/20 – 6/9/22*

Date	Number of locations reporting age	Cumulative total cases (all ages)	Cumulative child cases [^]	Percent children of total cases	Cases per 100,000 children
7/29/21	49 states, NYC, DC, PR and GU	29,402,405	4,198,296	14.3%	5577.9
7/22/21	49 states, NYC, DC, PR and GU ^{# •}	29,023,908	4,126,570	14.2%	5482.6
7/15/21	49 states, NYC, DC, PR and GU ^{# ±}	28,793,845	4,087,916	14.2%	5431.2
7/8/21	49 states, NYC, DC, PR and GU	28,645,258	4,064,365	14.2%	5399.9
7/1/21	49 states, NYC, DC, PR and GU ^{# Δ}	28,557,884	4,044,884	14.2%	5374.1
6/24/21	49 states, NYC, DC, PR and GU ^{# †}	28,486,004	4,032,782	14.2%	5358.0
6/17/21	49 states, NYC, DC, PR and GU	28,402,723	4,024,335	14.2%	5346.8
6/10/21	49 states, NYC, DC, PR and GU [#]	28,338,538	4,008,572	14.1%	5325.8
6/3/21	49 states, NYC, DC, PR and GU [#]	28,262,591	3,994,151	14.1%	5306.7
5/27/21	49 states, NYC, DC, PR and GU	28,167,723	3,977,870	14.1%	5285.0
5/20/21	49 states, NYC, DC, PR and GU [~]	28,025,875	3,943,407	14.1%	5239.2
5/13/21	49 states, NYC, DC, PR and GU	27,825,369	3,903,706	14.0%	5186.5
5/6/21	49 states, NYC, DC, PR and GU [○]	27,621,153	3,854,791	14.0%	5121.5
4/29/21	49 states, NYC, DC, PR and GU ^{○ ~}	27,320,708	3,782,724	13.8%	5025.8
4/22/21	49 states, NYC, DC, PR and GU	27,001,107	3,711,075	13.7%	4930.6
4/15/21	49 states, NYC, DC, PR, and GU	26,617,913	3,631,189	13.6%	4824.4

* Note: Data represent cumulative counts since states began reporting; All data reported by state/local health departments are preliminary and subject to change

[^] Unknown: number of children infected but not tested and confirmed

[#] For several weeks in 2021 (6/3, 6/10, 6/24, 7/1, 7/15, & 7/22), due to available data and calculations required to obtain child cases, there is a downward revision of cumulative child cases for MA

[•] As of 7/22/21, TX stopped updating demographic case data; As of 8/26/21, TX started updating demographic case data again and added 2,147 child cases; TX cumulative cases through 8/26/21

[±] On 7/15/21, IA revised case data, resulting in a downward revision of cumulative child cases

^Δ As of 6/30/21, NE COVID-19 dashboard is no longer available; NE cumulative cases through 6/24/21

[†] On 6/24/21, due to available CO data and calculation required to obtain child total cases, there is a downward revision of cumulative child cases

[~] On 4/29/21, and 5/20/21, WY revised case data, resulting in a downward revision of cumulative child cases

[○] On 4/29/21, RI revised case data, resulting in a downward revision of cumulative cases; On 5/6/21, due to data revision and lag in reporting, RI experienced 30% increase in child cases (4,906 cases added)

Appendix Table 2A, cont.: Summary of Child Case Data from 4/16/20 – 6/9/22*

Date	Number of locations reporting age	Cumulative total cases (all ages)	Cumulative child cases [^]	Percent children of total cases	Cases per 100,000 children
4/8/21	49 states, NYC, DC, PR, and GU	26,188,186	3,542,692	13.5%	4706.8
4/1/21	49 states, NYC, DC, PR, and GU [○]	25,798,537	3,469,500	13.4%	4609.6
3/25/21	49 states, NYC, DC, PR, and GU	25,446,361	3,405,638	13.4%	4524.8
3/18/21	49 states, NYC, DC, PR, and GU	25,111,012	3,341,608	13.3%	4439.7
3/11/21	49 states, NYC, DC, PR, and GU ^{# □}	24,806,402	3,284,531	13.2%	4363.8
3/4/21	49 states, NYC, DC, PR, and GU	24,487,634	3,231,836	13.2%	4293.8
2/25/21	49 states, NYC, DC, PR, and GU	24,134,958	3,168,274	13.1%	4209.4
2/18/21	49 states, NYC, DC, PR, and GU ^{# ~}	23,726,925	3,104,010	13.1%	4124.0
2/11/21	49 states, NYC, DC, PR, and GU	23,284,471	3,033,370	13.0%	4030.2
2/4/21	49 states, NYC, DC, PR, and GU	22,697,315	2,934,292	12.9%	3898.5
1/28/21	49 states, NYC, DC, PR, and GU	21,963,445	2,816,775	12.8%	3742.4
1/21/21	49 states, NYC, DC, PR, and GU	21,036,194	2,676,612	12.7%	3556.2
1/14/21	49 states, NYC, DC, PR, and GU	19,918,714	2,511,132	12.6%	3336.3
1/7/21	49 states, NYC, DC, PR, and GU	18,463,319	2,299,666	12.5%	3055.4
12/31/20	49 states, NYC, DC, PR, and GU	17,137,295	2,128,587	12.4%	2828.1
12/24/20	49 states, NYC, DC, PR, and GU	16,125,324	2,000,681	12.4%	2658.1
12/17/20	49 states, NYC, DC, PR, and GU	14,766,831	1,821,746	12.3%	2420.4
12/10/20	49 states, NYC, DC, PR, and GU	13,462,337	1,639,728	12.2%	2178.6
12/3/20	49 states, NYC, DC, PR, and GU	12,167,620	1,460,905	12.0%	1941.0

* Note: Data represent cumulative counts since states began reporting; All data reported by state/local health departments are preliminary and subject to change

[^] Unknown: number of children infected but not tested and confirmed

[○] On 4/1/21, RI revised case data, resulting in a downward revision of cumulative cases; On 5/6/21, due to data revision and lag in reporting, RI experienced 30% increase in child cases (4,906 cases added)

[#] On 2/18/21 and 3/11/21, due to available MA data and calculations required to obtain child total cases, there is a downward revision of cumulative child cases

[□] On 3/11/21, due to only PR data available and calculation required to obtain child total cases, there is a downward revision of cumulative child cases

[~] On 2/18/21, WY revised case data, resulting in a downward revision of cumulative child cases

Appendix Table 2A, cont.: Summary of Child Case Data from 4/16/20 – 6/9/22*

Date	Number of locations reporting age	Cumulative total cases (all ages)	Cumulative child cases [^]	Percent children of total cases	Cases per 100,000 children
11/26/20	49 states, NYC, DC, PR, and GU	11,184,900	1,337,217	12.0%	1776.6
11/19/20	49 states, NYC, DC, PR, and GU	10,060,749	1,183,609	11.8%	1572.6
11/12/20	49 states, NYC, DC, PR, and GU	9,037,991	1,039,464	11.5%	1381.0
11/5/20	49 states, NYC, DC, PR, and GU	8,236,710	927,518	11.3%	1232.3
10/29/20	49 states, NYC, DC, PR, and GU	7,669,038	853,635	11.1%	1134.1
10/22/20	49 states, NYC, DC, PR, and GU	7,207,186	792,188	11.0%	1052.5
10/15/20	49 states, NYC, DC, PR, and GU	6,837,527	741,891	10.9%	985.7
10/8/20	49 states, NYC, DC, PR, and GU	6,505,390	697,633	10.7%	926.9
10/1/20	49 states, NYC, DC, PR, and GU [#]	6,231,564	657,572	10.6%	873.7
9/24/20	49 states, NYC, DC, PR, and GU	5,965,268	624,890	10.5%	828.5
9/17/20	49 states, NYC, DC, PR, and GU	5,721,402	587,948	10.3%	779.5
9/10/20	49 states, NYC, DC, PR, and GU	5,493,006	549,432	10.0%	728.5
9/3/20	49 states, NYC, DC, PR, and GU	5,265,157	513,415	9.8%	680.3
8/27/20	49 states, NYC, DC, PR, and GU	5,018,113	476,439	9.5%	631.3
8/20/20	49 states, NYC, DC, PR, and GU	4,766,825	442,785	9.3%	583.2
8/13/20	49 states, NYC, DC, PR, and GU [~]	4,486,830	406,109	9.1%	538.1
8/6/20	49 states, NYC, DC, PR, and GU	4,159,947	380,174	9.1%	500.7

* Note: Data represent cumulative counts since states began reporting; All data reported by state/local health departments are preliminary and subject to change

[^] Unknown: number of children infected but not tested and confirmed

[#] As of 10/1/20, MO changed definition of child case from 0-19 to 0-17 years, resulting in a downward revision of cumulative child cases

[~] As of 8/13/20, AL changed definition of child case from 0-24 to 0-17 years, resulting in a downward revision of cumulative child cases

Appendix Table 2A, cont.: Summary of Child Case Data from 4/16/20 – 6/9/22*

Date	Number of locations reporting age	Cumulative total cases (all ages)	Cumulative child cases [^]	Percent children of total cases	Cases per 100,000 children
7/30/20	49 states, NYC, DC, PR, and GU	3,835,573	338,982	8.8%	446.5
7/23/20	49 states, NYC, DC, PR, and GU	3,416,630	288,287	8.4%	379.7
7/16/20	49 states, NYC, DC, PR, and GU	3,042,413	241,904	8.0%	318.6
7/9/20	49 states, NYC, DC, PR, and GU	2,651,066	200,184	7.6%	263.7
7/2/20	49 states, NYC, DC, PR, and GU	2,335,060	165,845	7.1%	218.4
6/25/20	49 states, NYC, DC, PR, and GU	2,073,387	138,213	6.7%	182.0
6/18/20	49 states, NYC, DC, PR, and GU	1,885,905	116,176	6.2%	153.0
6/11/20	49 states, NYC, DC, PR, and GU	1,750,240	98,246	5.6%	129.4
6/4/20	49 states, NYC, DC, PR, and GU	1,623,334	84,016	5.2%	110.7
5/28/20	47 states, NYC, DC, PR, and GU	1,425,154	66,513	4.7%	91.5
5/21/20	47 states, NYC, DC, PR, and GU	1,288,305	54,031	4.2%	74.4
5/14/20	47 states, NYC, DC, PR, and GU	1,159,407	42,370	3.7%	58.3
5/7/20	46 states, NYC, DC, PR, and GU	1,010,112	32,568	3.2%	45.0
4/30/20	47 states, NYC, DC, and PR	849,615	23,096	2.7%	31.8
4/23/20	48 states, NYC, DC, PR, and GU	710,953	15,911	2.2%	21.2
4/16/20	46 states, NYC, and DC	456,923	9,259	2.0%	13.3

* Note: Data represent cumulative counts since states began reporting; All data reported by state/local health departments are preliminary and subject to change

[^] Unknown: number of children infected but not tested and confirmed

Appendix Table 2B: Summary of Child Hospitalization Data from 5/21/20 –6/9/22*

Date	Number of locations reporting age distribution of hospitalizations	Cumulative total hospitalizations (all ages)	Cumulative child hospitalizations	Percent children of total hospitalizations	Hospitalization rate [^]
6/9/22	25 states and NYC [∩]	1,339,957	43,316	3.2%	0.7%
6/2/22	25 states and NYC	1,334,286	43,039	3.2%	0.7%
5/26/22	25 states and NYC	1,329,473	42,767	3.2%	0.7%
5/19/22	25 states and NYC	1,324,478	42,502	3.2%	0.7%
5/12/22	25 states and NYC [†]	1,318,685	42,199	3.2%	0.7%
5/5/22	25 states and NYC [∩] [◇]	1,314,723	42,017	3.2%	0.7%
4/28/22	25 states and NYC [×] [○]	1,310,993	41,815	3.2%	0.7%
4/21/22	25 states and NYC [×] [†]	1,307,828	41,646	3.2%	0.7%
4/14/22	25 states and NYC [×] ⁾	1,303,843	41,479	3.2%	0.7%
4/7/22	25 states and NYC [≠] [△]	1,298,755	41,313	3.2%	0.7%
3/31/22	25 states and NYC [≠] [†] [▲] [△]	1,294,991	41,147	3.2%	0.7%
3/24/22	25 states and NYC [×] [∅] [≡] [†]	1,289,312	40,851	3.2%	0.7%
3/17/22	25 states and NYC	1,284,524	40,733	3.2%	0.7%
3/10/22	25 states and NYC	1,273,502	40,404	3.2%	0.7%

* Note: Data represent cumulative counts since states began reporting; All data reported by state/local health departments are preliminary and subject to change
For additional information on US child hospitalizations from the CDC, visit <https://covid.cdc.gov/covid-data-tracker/#new-hospital-admissions>

[^] Hospitalization rate = number of child hospitalizations / number of child cases

[∩] On 5/5/22 and 6/9/22, AK revised hospitalization data resulting in a downward revisions of cumulative child hospitalizations and cumulative hospitalizations for all ages

[†] For several weeks (3/3/22, 3/24/22, 3/31/22, & 4/21/22) VA revised hospitalization data resulting in a downward revision of cumulative child hospitalizations and cumulative hospitalizations for all ages;

On 5/12/22, due to data available, VA cumulative child hospitalizations through 5/5/22; On 2/24/22, due to data available, VA cumulative child hospitalizations through 2/17/22

[◇] As of 5/5/22, due to available data for SC, hospitalization data through 4/28/22

[∩] On 5/5/2022, AK revised hospitalization data resulting in a downward revisions of cumulative child hospitalizations and cumulative hospitalizations for all ages

[×] As of 4/29/22, due to data available, CO cumulative child hospitalizations through 4/21/22

On 4/14/22 & 4/21/22, due to available data and percentage used to obtain hospitalization counts for CO, cumulative child hospitalizations through 4/7/22; On 3/24/22, CO revised hospitalization data, resulting in a downward revision of cumulative child hospitalizations

[○] On 4/28/22 Due to available data, for SD, cumulative total hospitalization adjusted

⁾ On 4/14/22, due to change in available data, KS cumulative hospitalizations through 4/7/22

[≠] On 3/31/2022 & 4/7/22, NJ revised hospitalization data, resulting in a downward revision of cumulative hospitalizations for all ages

[△] On 3/31/2022, & 4/7/22, WI revised hospitalization data resulting in a downward revision of cumulative child hospitalizations

[▲] On 3/31/2022, NM revised hospitalization data resulting in a downward revisions of cumulative child hospitalizations and cumulative hospitalizations for all ages

[∅] As of 3/24/22, due to change in available data, ND cumulative child hospitalizations and cumulative hospitalizations for all ages through 3/27/22

[≡] On 3/24/22, OH revised hospitalization data resulting in a downward revision of cumulative child hospitalizations

[<] On 3/3/22, AZ revised hospitalization data resulting in a downward revision of cumulative child hospitalizations and cumulative hospitalizations for all ages

Appendix Table 2B, cont.: Summary of Child Hospitalization Data from 5/21/20 –6/9/22*

Date	Number of locations reporting age distribution of hospitalizations	Cumulative total hospitalizations (all ages)	Cumulative child hospitalizations	Percent children of total hospitalizations	Hospitalization rate [^]
2/24/22	25 states and NYC [†]	1,260,278	39,733	3.2%	0.7%
2/17/22	25 states and NYC [†]	1,250,073	39,259	3.1%	0.7%
2/10/22	25 states and NYC ^{∅ □ † Δ}	1,235,259	38,498	3.1%	0.7%
2/3/22	24 states and NYC	1,212,847	37,824	3.1%	0.7%
1/27/22	24 states and NYC [†]	1,193,456	35,950	3.0%	0.7%
1/20/22	24 states and NYC ^{† ≈}	1,167,258	35,016	3.0%	0.7%
1/13/22	24 states and NYC [♦]	1,139,394	32,818	2.9%	0.8%
1/6/22	24 states and NYC	1,106,431	30,856	2.8%	0.8%
12/30/21	24 states and NYC ^{≠x}	1,080,231	29,220	2.7%	0.8%
12/23/21	24 states and NYC [□]	1,059,911	28,208	2.7%	0.8%
12/16/21	24 states and NYC ^{□ † x}	1,045,909	27,696	2.6%	0.8%
12/9/21	24 states and NYC [□]	1,027,801	27,277	2.7%	0.8%
12/2/21	24 states and NYC [†]	1,012,397	26,740	2.6%	0.8%

* Note: Data represent cumulative counts since states began reporting; All data reported by state/local health departments are preliminary and subject to change
For additional information on US child hospitalizations from the CDC, visit <https://covid.cdc.gov/covid-data-tracker/#new-hospital-admissions>

[^] Hospitalization rate = number of child hospitalizations / number of child cases

[†] For several weeks in 2021 & 2022 (12/2/21, 12/16/21, 1/20/22, 1/27/22, 2/10/22, 2/17/22, & 2/24/22) VA revised hospitalization data resulting in a downward revision of cumulative child hospitalizations and cumulative hospitalizations for all ages

[∅] As of 2/10/22, ND began reporting hospitalizations by age

[□] On 2/10/22, RI revised hospitalization data resulting in a downward revision of cumulative child hospitalizations ; As of 12/9/21, due to available data, RI cumulative hospitalizations through 12/2/21; On 12/16/21, due to lag in reporting RI reported large increase of hospitalizations;

On 12/23/21, RI revised hospitalization data resulting in a downward revision of cumulative child hospitalizations and cumulative hospitalizations for all ages

^Δ On 2/10/22, WI revised hospitalization data resulting in a downward revision of cumulative child hospitalizations

[≈] As of 1/20/22, HI cumulative child hospitalizations and cumulative hospitalizations for all ages through 1/13/22

[♦] On 1/13/22, due to available data and changes made to dashboard, WA cumulative child hospitalizations and cumulative hospitalizations for all ages through 1/6/22

[≠] On 12/30/21 NJ revised hospitalization data, resulting in a downward revision of cumulative hospitalizations for all ages

^x On 12/16/21 & 12/30/21, CO revised hospitalization data, resulting in a downward revision of cumulative child hospitalizations

Appendix Table 2B, cont.: Summary of Child Hospitalization Data from 5/21/20 –6/9/22*

Date	Number of locations reporting age distribution of hospitalizations	Cumulative total hospitalizations (all ages)	Cumulative child hospitalizations	Percent children of total hospitalizations	Hospitalization rate [^]
11/25/21	24 states and NYC [‡] †	998,025	26,246	2.6%	0.8%
11/18/21	24 states and NYC	985,022	25,747	2.6%	0.8%
11/11/21	24 states and NYC [▫]	972,611	25,292	2.6%	0.8%
11/4/21	24 states and NYC	961,644	24,909	2.6%	0.8%
10/28/21	24 states and NYC	950,114	24,498	2.6%	0.8%
10/21/21	24 states and NYC	938,561	24,073	2.6%	0.8%
10/14/21	24 states and NYC	925,559	23,582	2.5%	0.8%
10/7/21	24 states and NYC [▲]	912,900	23,071	2.5%	0.8%
9/30/21	24 states and NYC	897,902	22,429	2.5%	0.9%
9/23/21	24 states and NYC [×]	882,073	21,814	2.5%	0.9%
9/16/21	24 states and NYC [▲]	866,215	21,081	2.4%	0.9%
9/9/21	24 states and NYC [♦] ◊	849,324	20,436	2.4%	0.9%
9/2/21	24 states and NYC [♦]	833,528	19,940	2.4%	0.9%
8/26/21	24 states and NYC [×] • ≠ ▲	812,130	19,082	2.3%	0.9%
8/19/21	23 states and NYC [○]	784,760	18,315	2.3%	0.9%
8/12/21	23 states and NYC	773,236	17,865	2.3%	0.9%

* Note: Data represent cumulative counts since states began reporting; All data reported by state/local health departments are preliminary and subject to change
For additional information on US child hospitalizations from the CDC, visit <https://covid.cdc.gov/covid-data-tracker/#new-hospital-admissions>

[^] Hospitalization rate = number of child hospitalizations / number of child cases

[▫] Due to the Thanksgiving holiday, most data included for 11/25/21 were posted by States on 11/24/21

[†] On 11/25/21 VA revised hospitalization data resulting in a downward revision of cumulative child hospitalizations and cumulative hospitalizations for all ages;

[▫] On 11/11/21, NYC revised hospitalization data resulting in a downward revision of cumulative hospitalizations for all ages;

[▲] As of 8/26/21, NM began reporting hospitalization data by age; On 9/16/21, NM revised hospitalization data resulting in a downward revisions of child hospitalizations and cumulative hospitalizations for all ages;

On 10/7/21, cumulative total hospitalizations for all ages adjusted due to different available measure for NM

[×] On 8/26/21 and 9/23/21, CO revised hospitalization data, resulting in a downward revision of cumulative child hospitalizations

[•] On 9/2/21, due to available data, WA cumulative child hospitalizations increased by 22%; On 9/9/21, WA revised hospitalization data, resulting in a downward revision of cumulative child hospitalizations

[◊] On 9/9/21, SC revised hospitalization data, resulting in a downward revision of cumulative child hospitalizations

[•] On 8/26/21, NH revised hospitalization data, resulting in a downward revision of cumulative child hospitalizations

[≠] On 8/26/21, NJ revised hospitalization data, resulting in a downward revision of cumulative child hospitalizations and cumulative hospitalizations for all ages

[○] On 7/1/21, 7/8/21, 7/15/21, 7/22/21, and 8/19/21, SD revised hospitalization data, resulting in a downward revision of cumulative child hospitalizations and cumulative hospitalizations for all ages

Appendix Table 2B, cont.: Summary of Child Hospitalization Data from 5/21/20 –6/9/22*

Date	Number of locations reporting age distribution of hospitalizations	Cumulative total hospitalizations (all ages)	Cumulative child hospitalizations	Percent children of total hospitalizations	Hospitalization rate [^]
8/5/21	23 states and NYC	763,149	17,413	2.3%	0.9%
7/29/21	23 states and NYC ^{□ Δ}	753,956	17,059	2.3%	0.9%
7/22/21	23 states and NYC ^{○ Δ}	747,858	16,878	2.3%	0.9%
7/15/21	23 states and NYC ^{○ Δ}	743,863	16,756	2.3%	0.9%
7/8/21	23 states and NYC ^{○ ±}	740,371	16,623	2.2%	0.9%
7/1/21	23 states and NYC ^{~○ Δ}	737,706	16,520	2.2%	0.9%
6/24/21	23 states and NYC ^{○ #}	728,647	15,783	2.2%	0.9%
6/17/21	23 states and NYC ^{○ □ †}	819,143	16,997	2.1%	0.9%
6/10/21	24 states and NYC [○]	817,386	16,958	2.1%	0.9%
6/3/21	24 states and NYC [○]	813,351	16,822	2.1%	0.8%
5/27/21	24 states and NYC	800,302	16,525	2.1%	0.8%
5/20/21	24 states and NYC	793,175	16,261	2.1%	0.8%
5/13/21	24 states and NYC	786,279	16,013	2.0%	0.8%
5/6/21	24 states and NYC	778,080	15,740	2.0%	0.8%
4/29/21	24 states and NYC	768,506	15,456	2.0%	0.8%
4/22/21	24 states and NYC	759,280	15,187	2.0%	0.8%
4/15/21	24 states and NYC [~]	749,202	14,849	2.0%	0.8%

* Note: Data represent cumulative counts since states began reporting; All data reported by state/local health departments are preliminary and subject to change

[^] Hospitalization rate = number of child hospitalizations / number of child cases

□ On 7/29/21, RI revised hospitalization data, resulting in a downward revision of cumulative child hospitalizations

○ On 6/3/21, 6/10/21, 6/17/21, 6/24/21, 7/1/21, 7/8/21, 7/15/21, 7/22/21, and 8/19/21, SD revised hospitalization data, resulting in a downward revision of cumulative child hospitalizations and cumulative hospitalizations for all ages

Δ On 7/1/21, AZ revised data resulting in a 33% increase in cumulative child hospitalizations; On 7/15/21, 7/22/21, & 7/29/21 AZ revised data resulting in a downward revision of cumulative child hospitalizations

± On 7/8/21, GA revised hospitalization data, resulting in a downward revision of cumulative child hospitalizations

~ On 4/15/21, NE revised hospitalization data, resulting in a downward revision of cumulative hospitalizations for all ages; As of 6/30/21, NE COVID-19 dashboard is no longer available; NE cumulative hospitalizations through 6/24/21

On 6/24/21, FL stopped reporting hospitalization data, resulting in a downward revision of cumulative child hospitalizations and cumulative hospitalizations for all ages

□ On 6/17/21, RI revised hospitalization data, resulting in a downward revision of cumulative child hospitalizations and a downward revision of cumulative hospitalizations for all ages

† On 6/17/21, VA revised hospitalization data resulting in a downward revision of cumulative child hospitalizations

Appendix Table 2B, cont.: Summary of Child Hospitalization Data from 5/21/20 – 6/9/22*

Date~	Number of locations reporting age distribution of hospitalizations	Cumulative total hospitalizations (all ages)	Cumulative child hospitalizations	Percent children of total hospitalizations	Hospitalization rate^
4/8/21	24 states and NYC	738,793	14,489	2.0%	0.8%
4/1/21	24 states and NYC	722,365	14,179	2.0%	0.8%
3/25/21	24 states and NYC	713,236	13,953	2.0%	0.8%
3/18/21	24 states and NYC	699,071	13,540	1.9%	0.8%
3/11/21	24 states and NYC	690,206	13,283	1.9%	0.8%
3/4/21	23 states and NYC#	656,757	12,531	1.9%	0.8%
2/25/21	24 states and NYC	665,821	12,630	1.9%	0.8%
2/18/21	24 states and NYC	652,528	12,329	1.9%	0.8%
2/11/21	24 states and NYC	639,318	11,960	1.9%	0.8%
2/4/21	24 states and NYC	623,006	11,585	1.9%	0.8%
1/28/21	24 states and NYC	605,509	11,192	1.8%	0.8%
1/21/21	24 states and NYC	581,897	10,660	1.8%	0.8%
1/14/21	24 states and NYC	560,125	10,182	1.8%	0.8%
1/7/21	24 states and NYC	533,910	9,661	1.8%	0.9%
12/31/20	24 states and NYC	510,384	9,259	1.8%	0.9%
12/17/20	24 states and NYC	468,643	8,411	1.8%	0.9%
12/10/20	24 states and NYC	445,394	7,913	1.8%	0.9%
12/3/20	24 states and NYC	421,766	7,515	1.8%	1.0%
11/19/20	24 states and NYC	381,141	6,716	1.8%	1.1%

* Note: Data represent cumulative counts since states began reporting; All data reported by state/local health departments are preliminary and subject to change
 ~ Data from weeks ending 11/26/20 and 12/24/20 are not included

^ Hospitalization rate = number of child hospitalizations / number of child cases

On 3/4/21, SC not included due to incomplete data, resulting in a downward revision of cumulative hospitalizations for all ages

Appendix Table 2B, cont.: Summary of Child Hospitalization Data from 5/21/20 – 6/9/22*

Date	Number of locations reporting age distribution of hospitalizations	Cumulative total hospitalizations (all ages)	Cumulative child hospitalizations	Percent children of total hospitalizations	Hospitalization rate [^]
11/12/20	23 states and NYC	362,453	6,337	1.7%	1.2%
11/5/20	24 states and NYC	360,724	6,172	1.7%	1.3%
10/29/20	24 states and NYC	348,296	5,899	1.7%	1.3%
10/22/20	24 states and NYC	324,720	5,585	1.7%	1.3%
10/15/20	24 states and NYC	314,715	5,353	1.7%	1.4%
10/8/20	25 states and NYC [#]	307,135	5,211	1.7%	1.4%
10/1/20	25 states and NYC	302,896	5,340	1.8%	1.6%
9/24/20	25 states and NYC	294,901	5,164	1.8%	1.7%
9/17/20	25 states and NYC	288,345	5,016	1.7%	1.6%
9/10/20	24 states and NYC	270,034	4,677	1.7%	1.8%
9/3/20	23 states and NYC	257,300	4,321	1.7%	1.9%
8/27/20	22 states and NYC	243,056	4,163	1.7%	2.1%
8/20/20	21 states and NYC	234,810	4,062	1.7%	2.2%

* Note: Data represent cumulative counts since states began reporting; All data reported by state/local health departments are preliminary and subject to change

[^] Hospitalization rate = number of child hospitalizations / number of child cases

[#] On 10/8/20, AZ revised hospitalization data, resulting in a downward revision of cumulative child hospitalizations

Appendix Table 2B, cont.: Summary of Child Hospitalization Data from 5/21/20 – 6/9/22*

Date	Number of locations reporting age distribution of hospitalizations	Cumulative total hospitalizations (all ages)	Cumulative child hospitalizations	Percent children of total hospitalizations	Hospitalization rate [^]
8/13/20	21 states and NYC	225,893	3,849	1.7%	2.2%
8/6/20	20 states and NYC	206,189	3,276	1.6%	2.2%
7/30/20	20 states and NYC	195,106	2,669	1.4%	2.0%
7/23/20	20 states and NYC	181,345	2,304	1.3%	2.0%
7/16/20	20 states and NYC	172,787	2,074	1.2%	2.1%
7/9/20	20 states and NYC	164,158	1,948	1.2%	2.4%
7/2/20	20 states and NYC	156,640	1,780	1.1%	2.6%
6/25/20	20 states and NYC	151,583	1,663	1.1%	2.9%
6/18/20	19 states and NYC	140,215	1,433	1.0%	3.2%
6/11/20	19 states and NYC	134,600	1,322	1.0%	3.4%
6/4/20	19 states and NYC	128,779	1,231	1.0%	3.4%
5/28/20	16 states and NYC	114,678	1,054	0.9%	3.8%
5/21/20	17 states and NYC	105,665	891	0.8%	3.8%

* Note: Data represent cumulative counts since states began reporting; All data reported by state/local health departments are preliminary and subject to change

[^] Hospitalization rate = number of child hospitalizations / number of child cases

Appendix Table 2C: Summary of Child Mortality Data from 5/21/20 – 6/9/22*

Date	Number of locations reporting age distribution of deaths	Cumulative total deaths (all ages)	Cumulative child deaths	Percent children of total deaths	Percent of child cases resulting in death [^]
6/9/22	46 states, NYC, PR and GU	926,863	1,055	0.11%	0.01%
6/2/22	46 states, NYC, PR and GU [^]	924,517	1,049	0.11%	0.01%
5/26/22	46 states, NYC, PR and GU	923,053	1,045	0.11%	0.01%
5/19/22	46 states, NYC, PR and GU ^o [^]	920,860	1,032	0.11%	0.01%
5/12/22	46 states, NYC, PR and GU	919,020	1,024	0.11%	0.01%
5/5/22	46 states, NYC, PR and GU ^x [^]	917,243	1,018	0.11%	0.01%
4/28/22	46 states, NYC, PR and GU [±] [±]	913,999	1,010	0.11%	0.01%
4/21/22	46 states, NYC, PR and GU [♦] [^]	905,706	991	0.11%	0.01%
4/14/22	46 states, NYC, PR and GU [♦]	903,693	980	0.11%	0.01%
4/7/22	46 states, NYC, PR and GU ⁺ [^]	900,202	966	0.11%	0.01%
3/31/22	46 states, NYC, PR and GU	897,511	962	0.11%	0.01%
3/24/22	46 states, NYC, PR and GU [^] [«] [≡]	892,750	952	0.11%	0.01%
3/17/22	46 states, NYC, PR and GU	892,281	944	0.11%	0.01%
3/10/22	46 states, NYC, PR and GU	885,371	931	0.11%	0.01%
3/3/22	46 states, NYC, PR and GU ^{<}	877,379	914	0.10%	0.01%
2/24/22	46 states, NYC, PR and GU [▫]	867,930	891	0.10%	0.01%
2/17/22	46 states, NYC, PR and GU [◊] [≈]	857,177	871	0.10%	0.01%
2/10/22	46 states, NYC, PR and GU	836,615	851	0.10%	0.01%
2/3/22	46 states, NYC, PR and GU ^o	821,369	828	0.10%	0.01%

* Note: Data represent cumulative counts since states began reporting; All data reported by state/local health departments are preliminary and subject to change; For additional information on US child mortality from the CDC, visit <https://covid.cdc.gov/covid-data-tracker/#demographics>

[^] Number of child deaths / number of child cases

^o As of 3/17/22, FL available death data updated every other week- On 4/21/22, 4/7/22, 3/24/22, 4/7/22, 4/21/22, 5/5/22,, 5/19/33, & 6/2/22 due to available data, FL cumulative child deaths and cumulative deaths for all ages not updated; data through previous week

^o As of 5/19/22, due to available data, NE cumulative child deaths and total deaths through 5/12/22; As of 2/3/22, NE mortality data by age are available and include child deaths accumulated since 6/24/21

^x As of 5/5/22, due to available data for SC, cumulative child deaths and cumulative deaths for all ages through 4/28/22

[▫] On 4/28/22, due to available data, VA revised death data resulting in a downward revision of cumulative child deaths; On 2/24/22, due to available data, VA cumulative child deaths through 2/17/22

[±] On 4/28/22, TX monthly updated data mortality data was added; As of 1/14/21, TX released new data that is only updated monthly

[♦] On 4/14/22 & 4/21/22, due to change in available data for MI, cumulative child deaths adjusted

⁺ As of 4/7/22, due to change in available data, MO cumulative child deaths and cumulative deaths for all ages through 3/31/22

[«] On 3/24/22, due to available data, MA revised death data resulting in a downward revision of cumulative deaths for all ages (4,048 fewer deaths)

[≡] As of 3/24/22, due to change in available data, ND cumulative child deaths and cumulative deaths for all ages through 3/27/22

[<] On 3/3/22, due to available data, AZ revised mortality data resulting in a downward revision of cumulative deaths for all ages

[◊] As of 2/17/22, due to available data, IA cumulative child deaths through 2/10/22

[≈] On 2/17/22, DE revised mortality data resulting in a downward revision of cumulative child deaths

Appendix Table 2C, cont.: Summary of Child Mortality Data from 5/21/20 – 6/9/22*

Date	Number of locations reporting age distribution of deaths	Cumulative total deaths (all ages)	Cumulative child deaths	Percent children of total deaths	Percent of child cases resulting in death [^]
1/27/22	46 states, NYC, PR and GU ^{∅±}	805,524	807	0.10%	0.01%
1/20/22	46 states, NYC, PR and GU [•]	791,610	789	0.10%	0.01%
1/13/22	46 states, NYC, PR and GU [◇]	779,437	762	0.10%	0.01%
1/6/22	46 states, NYC, PR and GU [∅]	768,764	747	0.10%	0.01%
12/30/21	46 states, NYC, PR and GU	760,375	735	0.10%	0.01%
12/23/21	46 states, NYC, PR and GU	750,020	721	0.10%	0.01%
12/16/21	46 states, NYC, PR and GU [♦]	741,379	706	0.10%	0.01%
12/9/21	45 states, NYC, PR and GU	706,434	668	0.09%	0.01%
12/2/21	45 states, NYC, PR and GU [±]	699,909	651	0.09%	0.01%

* Note: Data represent cumulative counts since states began reporting; All data reported by state/local health departments are preliminary and subject to change; For additional information on US child mortality from the CDC, visit <https://covid.cdc.gov/covid-data-tracker/#demographics>

[^] Number of child deaths / number of child cases

[∅] On 1/6/22, due to available data, GU cumulative child deaths through 12/30/21; On 1/27/22, due to available data, GU cumulative child deaths and cumulative deaths for all ages through 1/20/22
[±] On 12/2/21, due to available data, TX cumulative child deaths through 11/25/21; As of 1/14/21, TX released new data that is only updated monthly- TX cumulative deaths through 1/20/22

[•] As of 1/20/22, HI cumulative child deaths and cumulative deaths for all ages through 1/13/22

[◇] As of 1/13/22, due to available data and changes made to dashboard, WA cumulative child deaths and cumulative deaths for all ages through 1/6/22

[♦] On 12/16/21, MI began reporting mortality data by age

Appendix Table 2C, cont.: Summary of Child Mortality Data from 5/21/20 – 6/9/22*

Date	Number of locations reporting age distribution of deaths	Cumulative total deaths (all ages)	Cumulative child deaths	Percent children of total deaths	Percent of child cases resulting in death [^]
11/25/21	45 states, NYC, PR and GU [■]	693,375	643	0.09%	0.01%
11/18/21	45 states, NYC, PR and GU	687,107	636	0.09%	0.01%
11/11/21	45 states, NYC, PR and GU	680,606	625	0.09%	0.01%
11/4/21	45 states, NYC, PR and GU	673,301	614	0.09%	0.01%
10/28/21	45 states, NYC, PR and GU	665,498	600	0.09%	0.01%
10/21/21	45 states, NYC, PR and GU	656,591	584	0.09%	0.01%
10/14/21	45 states, NYC, PR and GU	646,028	558	0.09%	0.01%
10/7/21	45 states, NYC, PR and GU [▲]	635,587	542	0.09%	0.01%
9/30/21	45 states, NYC, PR and GU	624,153	520	0.08%	0.01%
9/23/21	45 states, NYC, PR and GU	611,477	498	0.08%	0.01%
9/16/21	45 states, NYC, PR and GU	598,85	480	0.08%	0.01%
9/9/21	45 states, NYC, PR and GU	586,537	460	0.08%	0.01%
9/2/21	45 states, NYC, PR and GU	576,583	444	0.08%	0.01%
8/26/21	45 states, NYC, PR and GU [▲] ≠	567,949	425	0.07%	0.01%
8/19/21	44 states, NYC, PR and GU [×] ≠	556,231	402	0.07%	0.01%
8/12/21	43 states, NYC, PR and GU ^Δ	540,918	378	0.07%	0.01%
8/5/21	43 states, NYC, PR and GU [#] ~	537,846	371	0.07%	0.01%

* Note: Data represent cumulative counts since states began reporting; All data reported by state/local health departments are preliminary and subject to change; For additional information on US child mortality from the CDC, visit <https://covid.cdc.gov/covid-data-tracker/#demographics>

[^] Number of child deaths / number of child cases

[■] Due to the Thanksgiving holiday, most data included for 11/25/21 were posted by States on 11/24/21

[▲] As of 8/26/21, NM began reporting mortality data by age; On 10/7/21, cumulative total deaths for all ages adjusted due to different available mortality measure for NM

[≠] On 8/19/21 and 8/26/21, cumulative total deaths for all ages adjusted due to different available mortality measure for CO

[×] As of 8/19/21, SC began reporting mortality data by age

^Δ On 8/12/21, CA revised mortality data resulting in a downward revision of cumulative deaths for all ages

[#] On 8/5/21, due to available data and changes made to dashboard, definition of LA total cumulative deaths changed

[~] As of 8/5/21, due to available data and changes made to dashboard, AL cumulative deaths through 7/29/21

Appendix Table 2C, cont.: Summary of Child Mortality Data from 5/21/20 – 6/9/22*

Date	Number of locations reporting age distribution of deaths	Cumulative total deaths (all ages)	Cumulative child deaths	Percent children of total deaths	Percent of child cases resulting in death [^]
7/29/21	43 states, NYC, PR and GU	528,896	358	0.07%	0.01%
7/22/21	43 states, NYC, PR and GU	527,019	349	0.07%	0.01%
7/15/21	43 states, NYC, PR and GU	525,470	346	0.07%	0.01%
7/8/21	43 states, NYC, PR and GU	523,848	344	0.07%	0.01%
7/1/21	43 states, NYC, PR and GU [○] ~	522,380	335	0.06%	0.01%
6/24/21	43 states, NYC, PR and GU	520,660	336	0.06%	0.01%
6/17/21	42 states, NYC, PR and GU	518,016	335	0.06%	0.01%
6/10/21	43 states, NYC, PR and GU [□]	516,663	330	0.06%	0.01%
6/3/21	43 states, NYC, PR and GU	514,325	327	0.06%	0.01%
5/27/21	43 states, NYC, PR and GU	511,346	322	0.06%	0.01%
5/20/21	43 states, NYC, PR and GU [○]	507,373	316	0.06%	0.01%
5/13/21	43 states, NYC, PR and GU	503,900	308	0.06%	0.01%
5/6/21	43 states, NYC, PR and GU	500,262	306	0.06%	0.01%
4/29/21	43 states, NYC, PR and GU	496,248	303	0.06%	0.01%
4/22/21	43 states, NYC, PR and GU	492,057	296	0.06%	0.01%
4/15/21	43 states, NYC, PR and GU	487,881	297	0.06%	0.01%

* Note: Data represent cumulative counts since states began reporting; All data reported by state/local health departments are preliminary and subject to change;

○ On 5/20/21, NE revised mortality data, resulting in a downward revision of cumulative deaths for all ages; As of 6/30/21, NE COVID-19 dashboard is no longer available; NE cumulative deaths through 6/24/21

~ On 7/1/21, AL revised mortality data, resulting in a downward revision of cumulative child deaths;

□ On 6/10/21, WA revised mortality data, resulting in a downward revision of cumulative deaths for all ages

Appendix Table 2C, cont.: Summary of Child Mortality Data from 5/21/20 – 6/9/22*

Date	Number of locations reporting age distribution of deaths	Cumulative total deaths (all ages)	Cumulative child deaths	Percent children of total deaths	Percent of child cases resulting in death [^]
4/8/21	43 states, NYC, PR and GU	483,378	292	0.06%	0.01%
4/1/21	43 states, NYC, PR and GU	476,994	284	0.06%	0.01%
3/25/21	43 states, NYC, PR and GU ^o	471,104	279	0.06%	0.01%
3/18/21	43 states, NYC, PR and GU [□]	464,201	268	0.06%	0.01%
3/11/21	43 states, NYC, PR and GU	457,061	266	0.06%	0.01%
3/4/21	43 states, NYC, and GU [#]	444,878	253	0.06%	0.01%
2/25/21	43 states, NYC, and GU	438,657	256	0.06%	0.01%
2/18/21	43 states, NYC, and GU	425,350	247	0.06%	0.01%
2/11/21	43 states, NYC, and GU	407,222	241	0.06%	0.01%
2/4/21	43 states, NYC, and GU	388,204	227	0.06%	0.01%
1/28/21	43 states, NYC, and GU	369,149	215	0.06%	0.01%
1/21/21	43 states, NYC, and GU	348,860	205	0.06%	0.01%
1/14/21	43 states and NYC	330,261	191	0.06%	0.01%
1/7/21	42 states and NYC	297,914	188	0.06%	0.01%

* Note: Data represent cumulative counts since states began reporting; All data reported by state/local health departments are preliminary and subject to change

[^] Number of child deaths / number of child cases

^o On 3/25/21, VA revised mortality data, resulting in a downward revision of cumulative deaths for all ages

[□] On 3/18/21, KS revised mortality data, resulting in a downward revision of cumulative deaths for all ages

[#] On 3/4/21, OH revised mortality data, resulting in a downward revision of cumulative deaths for all ages

Appendix Table 2C, cont.: Summary of Child Mortality Data from 5/21/20 – 6/9/22*

Date~	Number of locations reporting age distribution of deaths	Cumulative total deaths (all ages)	Cumulative child deaths	Percent children of total deaths	Percent of child cases resulting in death^
12/31/20	43 states and NYC	294,443	179	0.06%	0.01%
12/17/20	42 states and NYC	263,833	172	0.07%	0.01%
12/10/20	42 states and NYC	249,442	162	0.06%	0.01%
12/3/20	43 states and NYC	236,996	154	0.06%	0.01%
11/19/20	43 states and NYC	218,007	138	0.06%	0.01%
11/12/20	42 states and NYC	210,441	133	0.06%	0.01%
11/5/20	42 states and NYC	199,564	123	0.06%	0.01%
10/29/20	42 states and NYC	194,175	121	0.06%	0.02%
10/22/20	42 states and NYC	189,250	120	0.06%	0.02%
10/15/20	42 states and NYC	184,294	120	0.07%	0.02%
10/8/20	42 states and NYC	180,014	115	0.06%	0.02%
10/1/20	42 states and NYC	175,423	112	0.06%	0.02%
9/24/20	42 states and NYC	170,971	109	0.06%	0.02%
9/17/20	42 states and NYC	167,019	109	0.07%	0.02%
9/10/20	42 states and NYC	160,856	105	0.07%	0.02%
9/3/20	42 states and NYC	156,053	103	0.07%	0.02%

* Note: Data represent cumulative counts since states began reporting; All data reported by state/local health departments are preliminary and subject to change
 ~ Data from weeks ending 11/26/20 and 12/24/20 are not included
 ^ Number of child deaths / number of child cases

Appendix Table 2C, cont.: Summary of Child Mortality Data from 5/21/20 – 6/9/22*

Date	Number of locations reporting age distribution of deaths	Cumulative total deaths (all ages)	Cumulative child deaths	Percent children of total deaths	Percent of child cases resulting in death [^]
8/27/20	43 states and NYC [#]	152,884	101	0.07%	0.02%
8/20/20	45 states and NYC	154,279	92	0.06%	0.02%
8/13/20	45 states and NYC	147,356	90	0.06%	0.02%
8/6/20	44 states and NYC	139,685	90	0.06%	0.02%
7/30/20	44 states and NYC	133,267	86	0.06%	0.03%
7/23/20	44 states and NYC	121,539	76	0.06%	0.03%
7/16/20	43 states and NYC	119,265	66	0.06%	0.03%
7/9/20	42 states and NYC	112,289	62	0.06%	0.03%
7/2/20	42 states and NYC	108,513	58	0.05%	0.04%
6/25/20	42 states and NYC	104,683	57	0.05%	0.04%
6/18/20	42 states and NYC	101,056	54	0.05%	0.05%
6/11/20	40 states and NYC	89,866	48	0.05%	0.05%
6/4/20	40 states and NYC	91,241	46	0.05%	0.06%
5/28/20	39 states and NYC	82,298	30	0.04%	0.05%
5/21/20	38 states and NYC	71,689	28	0.04%	0.06%

* Note: Data represent cumulative counts since states began reporting; All data reported by state/local health departments are preliminary and subject to change

[^] Number of child deaths / number of child cases

[#] As of 8/27/20, RI, MI, and SC not reporting age distributions of COVID-19 deaths (exact numbers not provided for <5 deaths); mortality data from those states excluded

Appendix Table 3A: Child COVID-19 Case Data Available on 6/9/22*

Click location name to view original data source

Location	Age range	Child population, 2019	Cumulative child cases	Percent children of total cases	Cumulative total cases (all ages)	Cases per 100,000 children
Alabama[^]	0-17	1,088,668	53,350	12.1%	442,373	4900.5
Alaska	0-19	196,852	67,486	26.4%	255,425	34282.6
Arizona	0-19	1,838,598	436,825	21.0%	2,077,346	23758.6
Arkansas	0-17	700,155	168,927	19.9%	847,811	24127.1
California	0-17	8,894,641	1,694,430	18.7%	9,058,902	19050.0
Colorado	0-19	1,407,971	290,706	19.8%	1,466,732	20647.2
Connecticut	0-19	735,193	177,571	21.8%	815,660	24153.0
Delaware	0-17	203,572	56,690	20.3%	278,877	27847.6
District of Columbia⁺	0-19	149,337	28,761	21.4%	134,623	19259.1
Florida[*]	0-14	3,512,139	772,851	12.6%	6,127,577	22005.1
Georgia	0-17	2,503,881	328,429	16.4%	2,007,615	13116.8
Guam	0-19	57,727	13,382	27.1%	49,324	23181.5
Hawaii[◇]	0-17	299,868	28,650	19.2%	149,458	9554.2
Idaho	0-17	448,201	64,926	14.3%	454,577	14485.9
Illinois	0-19	3,145,309	751,575	22.5%	3,346,836	23895.1
Indiana	0-19	1,755,070	335,106	19.2%	1,745,120	19093.6
Iowa	0-17	726,841	141,918	16.0%	886,987	19525.3
Kansas	0-17	700,250	153,330	19.3%	793,833	21896.5
Kentucky	0-19	1,118,934	304,300	22.3%	1,364,548	27195.5
Louisiana	0-17	1,087,630	228,934	18.0%	1,272,817	21048.9
Maine	0-19	281,158	67,379	25.4%	265,571	23964.8
Maryland	0-19	1,489,721	244,614	22.1%	1,105,840	16420.1
Massachusetts[#]	0-19	1,558,231	303,904	17.6%	1,725,219	19503.1
Michigan	0-19	2,407,690	516,842	20.1%	2,565,819	21466.3
Minnesota	0-19	1,445,346	335,868	22.0%	1,523,307	23237.9
Mississippi[▲]	0-17	698,583	150,234	19.0%	792,129	21505.5
Missouri	0-17	1,370,585	175,370	14.9%	1,173,288	12795.3

* Note: Data represent cumulative counts since states began reporting; All data reported by state/local health departments are preliminary and subject to change

[^] As of 8/5/21, due to available data and changes made to dashboard, AL cumulative cases through 7/29/21

+ As of 3/10/22, due to data available, DC cumulative child cases through 3/3/22

• As of 6/24/21, due to change in available data for FL, calculation required to obtain child cases data for 0-14 years; As of 3/17/2022, available case and death data updated biweekly - FL cumulative child cases and cumulative cases for all ages through 5/26/22;

As of 6/9/22, due to available data for FL (case data updated every other week), child and total cases averaged across 2 week period accordingly

◇ As of 1/20/22, due to data available, HI cumulative child cases and cumulative cases for all ages through 1/13/22

As of 9/3/20, MA changed reporting from total child cases to cases added in last two weeks; 5/5/22 totals calculated using MA Dept. of Public Health COVID-19 Dashboard published 6/2/22 (data from 5/15/22-5/28/22) and 5/12/22 version of this report;

Due to available data and calculations required to obtain MA child cases, weekly estimates fluctuate

▲ As of 3/17/22, due to data available, MS cumulative cases through 3/10/22

Appendix Table 3B: Child COVID-19 Case Data Available on 6/9/22*

Click location name to view original data source

Location	Age range	Child population, 2019	Cumulative child cases	Percent children of total cases	Cumulative total cases (all ages)	Cases per 100,000 children
Montana	0-19	254,416	51,977	18.6%	278,993	20429.9
Nebraska[■]	0-19	760,272	95,041	19.7%	481,424	12501.0
Nevada	0-19	688,997	115,292	16.7%	690,370	16733.3
New Hampshire	0-19	291,038	85,399	26.1%	327,814	29342.9
New Jersey	0-17	1,938,578	371,522	17.9%	2,078,712	19164.7
New Mexico	0-19	531,712	125,315	23.1%	542,746	23568.2
North Carolina	0-17	2,300,715	515,230	18.4%	2,799,515	22394.3
North Dakota	0-19	200,777	50,847	20.7%	245,476	25325.1
NYC	0-17	1,726,900	347,589	16.2%	2,147,081	20127.9
Ohio	0-19	2,886,873	514,025	18.4%	2,798,900	17805.6
Oklahoma	0-17	952,238	162,408	15.4%	1,054,953	17055.4
Oregon	0-19	965,480	162,797	20.9%	777,700	16861.8
Pennsylvania	0-19	2,801,187	560,901	19.0%	2,954,750	20023.7
Puerto Rico	0-19	594,011	117,398	16.6%	705,798	19763.6
Rhode Island	0-18	220,525	84,761	22.5%	376,083	38436.0
South Carolina[«]	0-20	1,314,988	361,197	24.5%	1,474,272	27467.7
South Dakota	0-19	240,567	45,219	18.7%	241,326	18796.8
Tennessee	0-20	1,762,659	476,058	23.0%	2,073,518	27007.9
Texas[^]	0-19	8,210,585	7,754 (1,184,990)	7.8% (21.5%)	99,989 (5,511,069)	-- (14432.5)
Utah	0-14	774,764	132,328	13.8%	962,209	17079.8
Vermont	0-19	134,415	35,138	26.1%	134,615	26141.4
Virginia	0-19	2,087,426	376,844	20.8%	1,814,665	18053.0
Washington[♦]	0-17	1,840,306	344,838	21.5%	1,605,181	18738.1
West Virginia	0-20	402,473	118,912	22.8%	521,543	29545.3
Wisconsin	0-19	1,422,095	368,444	21.8%	1,691,977	25908.5
Wyoming[~]	0-18	140,694	21,562	17.1%	125,971	15325.5

* Note: Data represent cumulative counts since states began reporting; All data reported by state/local health departments are preliminary and subject to change

■ As of 5/19/22, due to available data, NE cumulative child cases and total cases through 5/12/22

« As of 5/5/22, due to available data, SC cumulative child cases and total cases through 4/28/22

[^] Texas previously reported age for only 2% of total confirmed cases and these cumulative cases through 8/26/21 are included (7,754); Cases per 100,000 children omitted for Texas; Data for Texas in this report is limited to the case count for which age is provided through 8/26/21; As of 1/14/22, TX released new data that is NOT included in cumulative case counts or figures but reported above in parentheses (eg, 1,184,990 cumulative child cases as of 5/19/22)

Appendix Table 4A: Child Hospitalization Data Available on 6/9/22*

COVID-19-Associated Hospitalizations and Children

Location	Age range	Cumulative child hospitalizations	Cumulative total hospitalizations (all ages)	Percent children of total hospitalizations	Hospitalization rate [^]
Alaska ^o	0-19	113	3,767	3.0%	0.2%
Arizona	0-19	4,844	110,587	4.4%	1.1%
Colorado [±]	0-19	2,361	61,814	3.8%	0.8%
Georgia	0-17	3,484	114,502	3.0%	1.1%
Hawaii [≈]	0-17	203	4,582	4.4%	0.7%
Idaho	0-17	428	17,275	2.5%	0.7%
Indiana	0-19	3,756	131,607	2.9%	1.1%
Kansas [≡]	0-17	491	20,081	2.4%	0.3%
Minnesota	0-19	2,825	65,116	4.3%	0.8%
Mississippi [▲]	0-17	311	14,042	2.2%	0.2%
Nebraska [~]	0-19	131	6,891	1.9%	0.1%
New Hampshire	0-19	67	5,286	1.3%	0.1%

* Note: Data represent cumulative counts since states began reporting; All data reported by state/local health departments are preliminary and subject to change

[^] Hospitalization rate = number of child hospitalizations / number of child cases

^o On 6/9/22, AK revised hospitalization data resulting in a downward revisions of cumulative child hospitalizations and cumulative hospitalizations for all ages

[±] As of 4/28/22, CO cumulative hospitalizations through 4/7/22

[≈] As of 1/20/22, HI cumulative child hospitalizations and cumulative hospitalizations for all ages through 1/13/22

[≡] As of 4/14/22, due to change in available data, KS cumulative hospitalizations through 4/7/22

[▲] As of 3/17/22, due to data available, MS cumulative cases through 3/10/22

[~] As of 6/30/21, NE cumulative hospitalization data is no longer available; NE cumulative hospitalizations through 6/24/21

Appendix Table 4B: Child Hospitalization Data Available on 6/9/22* COVID-19-Associated Hospitalizations and Children

Location	Age range	Cumulative child hospitalizations	Cumulative total hospitalizations (all ages)	Percent children of total hospitalizations	Hospitalization rate [^]
New Jersey	0-17	2,812	124,274	2.3%	0.8%
New Mexico^x	0-17	724	27,860	--	--
North Dakota[▲]	0-19	215	7,855	2.7%	0.4%
NYC	0-17	5,103	165,914	3.1%	1.5%
Ohio	0-19	4,347	117,844	3.7%	0.8%
Oregon	0-19	1,050	31,463	3.3%	0.6%
Rhode Island	0-18	478	16,727	2.9%	0.6%
South Carolina[○]	0-20	944	37,750	2.5%	0.3%
South Dakota	0-19	316	10,899	2.9%	0.7%
Tennessee	0-20	1,125	48,481	2.3%	0.2%
Utah	0-14	1,369	35,122	3.9%	1.0%
Virginia	0-19	1,797	52,170	3.4%	0.5%
Washington[◆]	0-19	1,193	46,528	2.6%	0.3%
Wisconsin	0-19	2,829	61,520	4.6%	0.8%

* Note: Data represent cumulative counts since states began reporting; All data reported by state/local health departments are preliminary and subject to change

[^] Hospitalization rate = number of child hospitalizations / number of child cases

^x As of 8/26/21, NM began reporting hospitalizations by age; due to only data available, NM is excluded from hospitalization percentages

[▲] As of 2/10/22, ND began reporting hospitalizations by age; As of 3/24/22, due to change in available data, ND cumulative child hospitalizations and cumulative hospitalizations for all ages through 3/17/22

[○] As of 5/5/22, due to available data for SC, cumulative child hospitalizations and cumulative hospitalizations for all ages through 4/28/22

[◆] As of 1/13/22, due to data available and changes made to dashboard, WA cumulative child hospitalizations and cumulative hospitalizations for all ages through 1/6/22

Appendix Table 5A: Child Mortality Data Available on 6/9/22*

COVID-19-Associated Deaths and Children

Location	Age range	Cumulative child deaths	Cumulative total deaths (all ages)	Percent children of total deaths	Percent of child cases resulting in death [^]
Alabama[#]	0-17	8	11,510	0.07%	0.01%
Alaska	0-19	2	1,252	0.16%	0.00%
Arizona	0-19	70	30,372	0.23%	0.02%
Arkansas	0-17	6	11,511	0.05%	0.00%
California	0-17	71	90,892	0.08%	0.00%
Colorado	0-19	40	12,599	0.32%	0.01%
Connecticut	0-19	9	10,999	0.08%	0.01%
Delaware	0-17	2	2,962	0.07%	0.00%
District of Columbia	0-19	0	1,319	0.00%	0.00%
Florida^{^n}	0-15	45	74,590	0.06%	0.01%
Georgia	0-17	37	31,885	0.12%	0.01%
Guam	0-19	5	364	1.37%	0.04%
Hawaii[•]	0-17	1	1,099	0.09%	0.00%
Idaho	0-17	2	4,946	0.04%	0.00%
Illinois	0-19	39	33,914	0.11%	0.01%
Indiana	0-19	42	22,805	0.18%	0.01%
Iowa[×]	0-17	6	8,829	0.07%	0.00%
Kansas	0-17	12	8,946	0.13%	0.01%
Kentucky	0-19	15	16,004	0.09%	0.00%
Louisiana	0-17	21	17,355	0.12%	0.01%
Maine	0-19	4	2,401	0.17%	0.01%
Maryland	0-19	25	14,660	0.17%	0.01%
Massachusetts[~]	0-19	16	19,474	0.08%	0.01%
Michigan	0-19	44	36,538	0.12%	0.01%
Minnesota	0-19	10	12,692	0.08%	0.00%

* Note: Data represent cumulative counts since states began reporting; All data reported by state/local health departments are preliminary and subject to change;

[^] Number of child deaths / number of child cases;

[#] As of 8/5/21, due to available data and changes made to dashboard, AL cumulative deaths through 7/29/21

ⁿ As of 3/17/2022, available death data updated biweekly: FL cumulative child deaths and cumulative deaths for all ages through 6/9/22

[•] As of 1/20/22, due to available data, HI cumulative child deaths and cumulative deaths for all ages through 1/13/22

[×] As of 2/17/22, due to available data, IA cumulative child deaths and cumulative deaths for all ages through 2/10/22

[~] As of 9/3/20, MA changed reporting from total child cases to cases added in last two weeks; 6/2/22 totals calculated using MA Dept. of Public Health COVID-19 Dashboard published 6/2/22 (data from 5/15/22-5/28/22) and 4/12/22 version of this report

Appendix Table 5B: Child Mortality Data Available on 6/9/22*

COVID-19-Associated Deaths and Children

Location	Age range	Cumulative child deaths	Cumulative total deaths (all ages)	Percent children of total deaths	Percent of child cases resulting in death [^]
Mississippi [▲]	0-17	13	12,228	0.11%	0.01%
Missouri [†]	0-17	15	16,139	0.09%	0.01%
Nebraska [○]	0-19	4	3,445	0.12%	0.00%
Nevada	0-19	11	10,935	0.10%	0.01%
New Hampshire	0-19	1	2,555	0.04%	0.00%
New Jersey	0-17	17	33,811	0.05%	0.00%
New Mexico [±]	0-17	8	7,844	--	--
North Carolina	0-17	22	25,094	0.09%	0.00%
North Dakota [≡]	0-19	3	2,229	0.13%	0.01%
NYC	0-17	36	40,513	0.09%	0.01%
Ohio	0-19	37	38,657	0.10%	0.01%
Oklahoma	0-17	20	14,458	0.14%	0.01%
Oregon	0-19	10	7,683	0.13%	0.01%
Pennsylvania	0-19	29	45,413	0.06%	0.01%
Puerto Rico	0-19	10	4,427	0.23%	0.01%
South Carolina [×]	0-20	35	17,767	0.20%	0.01%
South Dakota	0-19	5	2,928	0.17%	0.01%
Tennessee	0-20	40	26,491	0.15%	0.01%
Texas [#]	0-19	150	86,837	0.17%	--
Vermont [■]	0-19	0	648	0.00%	0.00%
Virginia	0-19	24	20,439	0.12%	0.01%
Washington [♦]	0-19	17	9,909	0.17%	0.00%
Wisconsin	0-19	16	14,671	0.11%	0.00%
Wyoming	0-18	0	1,824	0.00%	0.00%

* Note: Data represent cumulative counts since states began reporting; All data reported by state/local health departments are preliminary and subject to change; [^] Number of child deaths / number of child cases

▲ As of 3/17/22, due to data available, MS cumulative deaths through 3/10/22

+ As of 4/7/22, due to change in available data, MO cumulative child deaths and cumulative deaths for all ages through 3/31/22

○ As of 5/19/22, due to available data, NE cumulative deaths through 5/12/22; As of 2/3/22, NE mortality data by age are again available and included for 6/24/21 through 2/3/22

± As of 8/26/21, NM began reporting mortality data by age; due to only available data, NM is excluded from mortality data percentages

≡ As of 3/24/22, due to change in available data, ND cumulative deaths and cumulative deaths for all ages through 3/17/22

× As of 8/19/21, SC began reporting mortality data by age; As of 5/5/22, due to available data for SC, cumulative child deaths and cumulative deaths for all ages through 4/28/22

As of 7/30/20, Texas provided age distribution for all COVID-19-associated deaths; Texas reported age for only 2% of total confirmed cases; As of 1/14/21, TX released new data that is only updated monthly- TX cumulative deaths through 2/3/22;

Percent of child cases resulting in death omitted for Texas; Data for Texas in this report is limited to the case count for which age is provided

■ As of 5/19/22, due to available data and changes made to dashboard, VT cumulative child deaths and cumulative deaths for all ages through 5/12/22

♦ As of 1/13/22, due to available data and changes made to dashboard, WA cumulative child deaths and cumulative deaths for all ages through 1/6/22

Frequently Asked Questions

Q: *Why are the AAP and CHA collecting this data?*

A: Our goal is to provide a weekly snapshot of how COVID-19 is affecting children in the United States. CDC provides a national number of cases by age on its [COVID-19 data tracker](#), but there are no geographic indicators provided and the age data are not released on a regular schedule. Our data collection method allows for tracking the number of child cases weekly, as well as providing publicly reported case numbers for children at the state level.

Q: *The age ranges for children in the report are broad – why were these age ranges chosen and are data available for more specific age ranges of children?*

A: Each state makes different decisions about how to report the age distribution of COVID-19 cases, and as a result the age range for reported cases varies by state. For the purposes of this report it is not possible to standardize more detailed age ranges for children based on what is publicly available from the states at this time. Please refer to specific state health department websites of interest to see if the state provides more granular detail of cases by age (see report Appendix for links to all state data sources).

Q: *What is the definition of a COVID-19 case?*

A: COVID-19 cases are defined as persons who have been identified as a confirmed (via a diagnostic molecular test) or probable (via a clinical diagnosis) case. COVID-19 cases are reported by the states, [following reporting standards established by the CDC](#). For more information on the definitions of confirmed and probable cases, see the following resources: [COVID Tracking Project: Definitions](#); [CDC, COVID-19 Data and Surveillance](#).

Q: *Why are only a small portion (<5%) of child COVID-19 cases included for Texas?*

A: Texas Department of State Health Services reports overall confirmed cases but only a small fraction are included in the age distribution. As of 1/14/22 (last updated 4/19/22), TX released new data that is NOT included in cumulative case counts or figures but located [here](#) and in Appendix 3B of this report. Other sources for child COVID-19 cases can be found here: [Texas Public Schools COVID-19 Data](#)

Q: *Why does the report not provide the percent of child cases that were symptomatic vs. asymptomatic or that had underlying conditions?*

A: For the report, we are limited to the data that states are making publicly available. At this time, states are not providing data related to symptoms or underlying conditions and age. CDC provides some information on COVID-19 hospitalizations by age on the [CDC COVID-NET dashboard](#).

Q: *For the child population for each state, does that match the listed age range for the state's child COVID-19 data?*

A: Yes, the report uses child population numbers that match on directly with the listed age range for children provided by each state. State population numbers were obtained from the [US Census Bureau](#).

Q: *The report provides “cumulative totals” for cases, tests, hospitalizations, and deaths for available states. Are those the total numbers since the states began reporting, or since the AAP and CHA started collecting this data?*

A: All “cumulative total” data represent cumulative counts since states began reporting COVID-19 data.

Q: *How can I learn more about COVID-19 cases in my state?*

A: Links to all state data sources are provided in the Appendix.

Q: *Are these data final?*

A: No. All data reported by state/local health departments included in this report are preliminary and subject to change and revision as health departments gather more information.

Q: *Is this the most recent report available? When will a new report be released?*

A: The most recent version of the report is available for [download on the AAP website](#). New reports are made available on a weekly basis at [aap.org/CovidStateData](#).

Additional Resources

- For more information about COVID-19 data in your area, we encourage you to reach out to your state and local health department officials
- Visit the [AAP Critical Updates](#) site for daily updates, resources, and guidance on COVID-19 and pediatrics
- For COVID-19 articles for parents in English and Spanish, visit [HealthyChildren.org](#), the parenting website of the AAP

Contact Information

This a joint report from the **American Academy of Pediatrics** and the **Children's Hospital Association**

- For technical questions, please contact the authors at:

Bill Cull, PhD

Senior Director, Research

American Academy of Pediatrics

wcull@aap.org

Mitch Harris, PhD

Director of Research

Children's Hospital Association

Mitch.Harris@childrenshospitals.org

- For media inquiries, please contact:

Lisa Black

Media Relations

American Academy of Pediatrics

lblack@aap.org

Gillian Ray

External Relations

Children's Hospital Association

Gillian.Ray@childrenshospitals.org

Acknowledgements

Special thanks to the following individuals for their contributions to this report: Alex Rothenburger, MPA (Children's Hospital Association), Vinson Do (Children's Hospital Association), Lynn Olson, PhD (American Academy of Pediatrics), Blake Sisk, PhD (American Academy of Pediatrics), Mary Pat Frintner, MSPH (American Academy of Pediatrics), Liz Gottschlich, MA (American Academy of Pediatrics), Kate Kornfeind, MPH (American Academy of Pediatrics), Dave Prentice, MS (American Academy of Pediatrics), and Chloe Somberg (American Academy of Pediatrics)



CHILDREN'S
HOSPITAL
ASSOCIATION

American Academy of Pediatrics

DEDICATED TO THE HEALTH OF ALL CHILDREN®

