

Children and COVID-19: State Data Report

A joint report from the American Academy of Pediatrics and the Children's Hospital Association

Summary of publicly reported data from 49 states, NYC, DC, PR, and GU

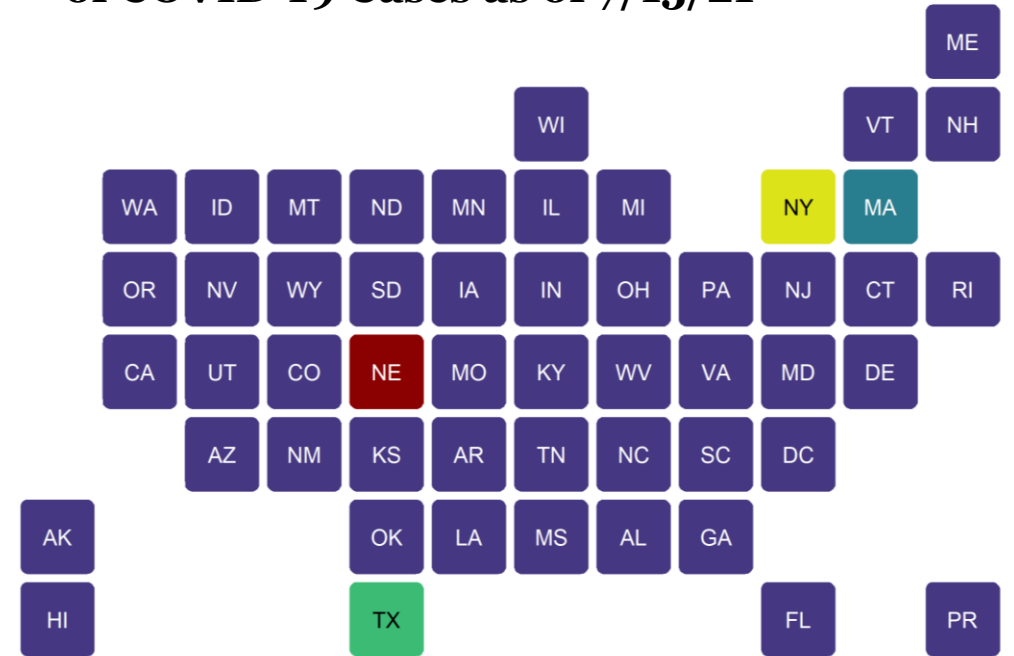
Version: 7/15/21

** Note: The numbers in this report represent cumulative counts since states began reporting. The data are based on how public agencies collect, categorize and post information. All data reported by state/local health departments are preliminary and subject to change and reporting may change over time. Notably, in the summer of 2021, some states have revised cases counts previously reported, begun reporting less frequently, or dropped metrics previously reported. For example, the Nebraska COVID-19 dashboard is no longer available as of June 30, 2021. Readers should consider these factors. States may have additional information on their web sites.*

COVID-19: Available Data for Children

- State-level reports are the best publicly available data on COVID-19 cases in children
- Starting in June 2021, some states reported less frequently and dropped metrics previously reported as overall cases decreased
- This report summarizes what was available on 7/15/21
- **49 states, NYC, DC, Puerto Rico and Guam** provided age distributions of reported COVID-19 cases
 - 11 states provided age distribution of testing
 - 23 states and NYC provided age distribution of hospitalizations
 - 43 states, NYC, PR and Guam provided age distribution of deaths

Fig 1A: States Reporting Age Distribution of COVID-19 Cases as of 7/15/21



Reporting age distribution of COVID-19 cases:

- Yes: Reported age distribution of cases
- TX: Reported age distribution for only 3% of cases
- NY: Only NYC reported age distribution of cases
- MA: Only reported age distribution of cases added in past 2 weeks
- NE: COVID-19 dashboard is no longer available as of 6/30/21

See detail in Appendix: Data from 49 states, NYC, DC, PR, and GU
 Analysis by American Academy of Pediatrics and Children's Hospital Association
 All data reported by state/local health departments are preliminary and subject to change

Children and COVID-19: Data Limitations

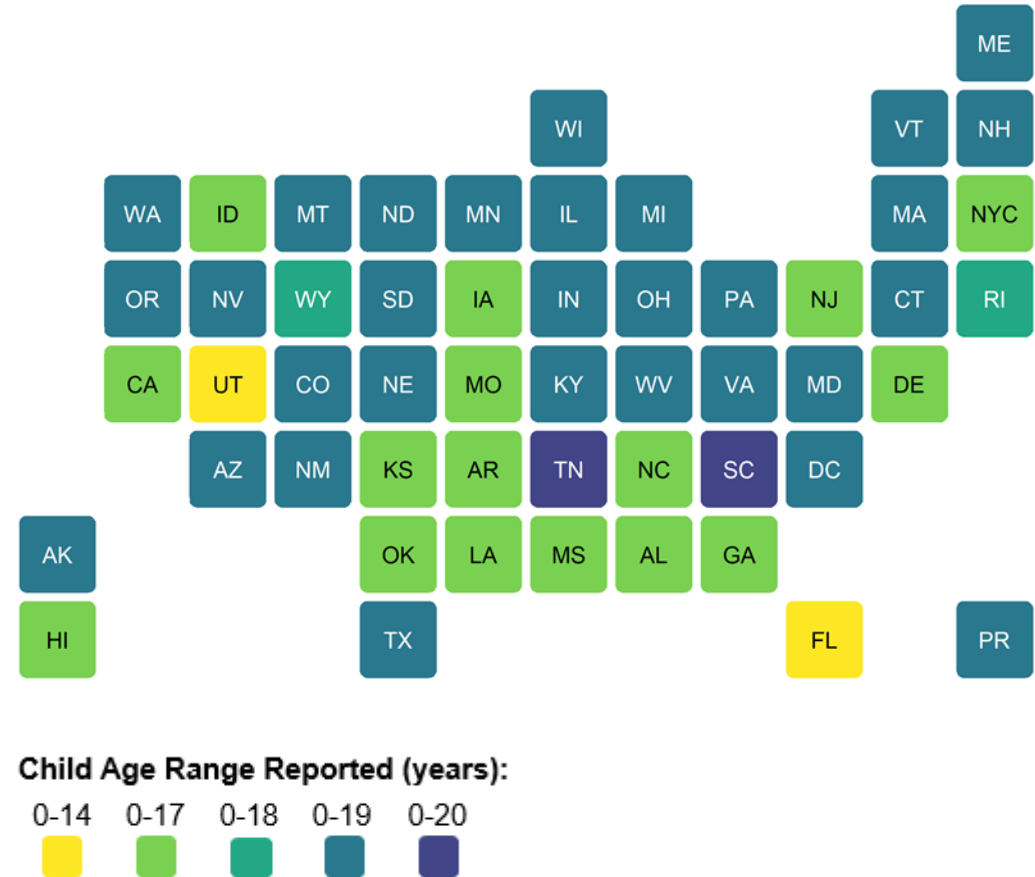
General Limitations

- Format, content, and metrics of reported COVID-19 data differed substantially by state
- Definition of “child”: Age ranges reported for children varied by state (0-14, 0-17, 0-18, 0-19, and 0-20 years; see Fig 1B)
- Unknown: Number of children infected but not tested and confirmed

State-Level Changes

- TX: Age distribution reported for only 3% of confirmed cases (80,313/2,565,125), resulting in an undercount of child cases; TX is excluded from some figures
- NY: Did not provide age distribution for state-wide cases (NYC only)
- AL: As of 8/13/20, changed definition of child case from 0-24 to 0-17 years; as of 9/17/20, provided age distribution for confirmed cases only
- HI: As of 8/27/20, changed definition of child case from 0-19 to 0-17 years
- MA: As of 9/3/20, revised definition of probable case, leading to a reduction in total case count, and changed reporting from total child cases to cases added in last two weeks
- RI: As of 9/10/20, changed definition of child case from 0-19 to 0-18 years
- MO: As of 10/1/20, changed definition of child cases from 0-19 to 0-17 years
- PR: As of 3/11/21, due to a change in data available, a calculation was required to obtain confirmed and probable child case totals, leading to a reduction in total child case count
- AK: On 6/17/21, did not report child hospitalizations or child deaths
- FL: As of 6/24/21, stopped reporting child hospitalizations
- NE: As of 6/30/21, COVID-19 dashboard is no longer available; NE child cases, hospitalizations, and deaths through 6/24/21
- IA: As of 7/15/21, stopped updating child testing data

Fig 1B: Child Age Ranges of COVID-19 Cases Reported by States as of 7/15/21



See detail in Appendix: Data from 49 states, NYC, DC, PR, and GU; Analysis by American Academy of Pediatrics and Children's Hospital Association; All data reported by state/local health departments are preliminary and subject to change

Children and COVID-19: 7/15/21

Summary of State-Level Data Provided in this Report

Detail and links to state/local data sources provided in Appendix

Cumulative Number of Child COVID-19 Cases*

- 4,087,916 total child COVID-19 cases reported, and children represented 14.2% (4,087,916/28,793,845) of all cases
- Overall rate: 5,431 cases per 100,000 children in the population

Change in Child COVID-19 Cases*

- 23,551 child COVID-19 cases were reported the past week from 7/8/21-7/15/21 (4,064,365 to 4,087,916) and children represented 15.9% (23,551/148,587) of the weekly reported cases
- Over two weeks, 7/1/21-7/15/21, there was a 1% increase in the cumulated number of child COVID-19 cases (43,033 cases added (4,044,884 to 4,087,916))

Testing (11 states reported)*^

- Children made up between 11.0%-19.9% of total state tests, and between 4.9%-17.4% of children tested were tested positive

Hospitalizations (23 states and NYC reported)*

- Children were 1.3%-3.6% of total reported hospitalizations, and between 0.1%-1.9% of all child COVID-19 cases resulted in hospitalization

Mortality (43 states, NYC, PR and GU reported)*

- Children were 0.00%-0.26% of all COVID-19 deaths, and 8 states reported zero child deaths
- In states reporting, 0.00%-0.03% of all child COVID-19 cases resulted in death

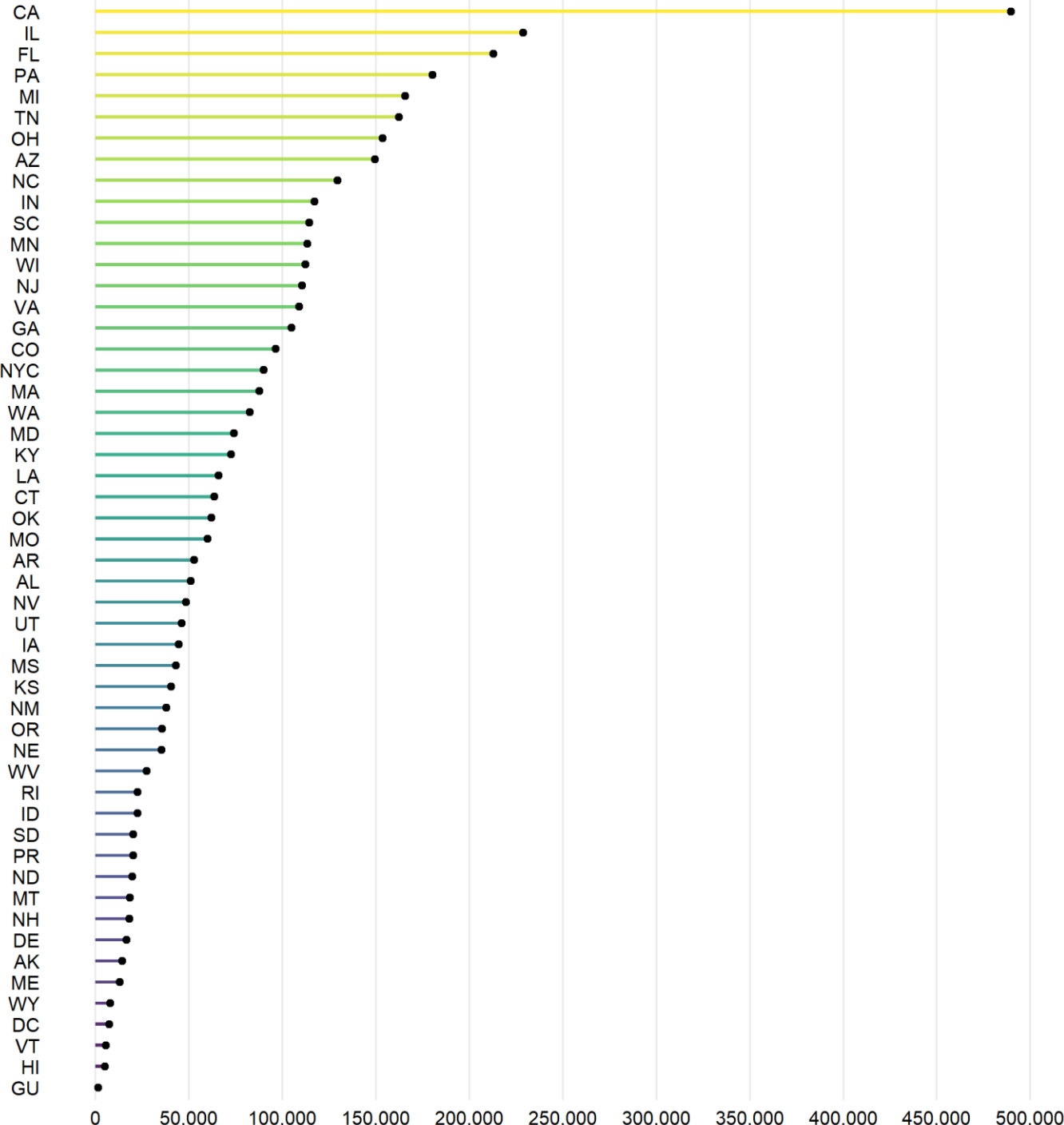
See detail in Appendix: Data from 49 states, NYC, DC, PR, and GU; Analysis by American Academy of Pediatrics and Children's Hospital Association

* Note: The numbers in this summary represent cumulative counts since states began reporting. In this summary and full report, the data are based on how public agencies collect, categorize and post information. All data reported by state/local health departments are preliminary and subject to change and reporting may change over time. Notably, in the summer of 2021, some states have revised cases counts previously reported, begun reporting less frequently, or dropped metrics previously reported. For example, the Nebraska COVID-19 dashboard is no longer available as of June 30, 2021. Readers should consider these factors. States may have additional information on their web sites.

^ On 7/15/21, IA stopped updating child testing data; IA cumulative tests through 7/8/21

Fig 2. Cumulative Number of Child COVID-19 Cases: 7/15/21

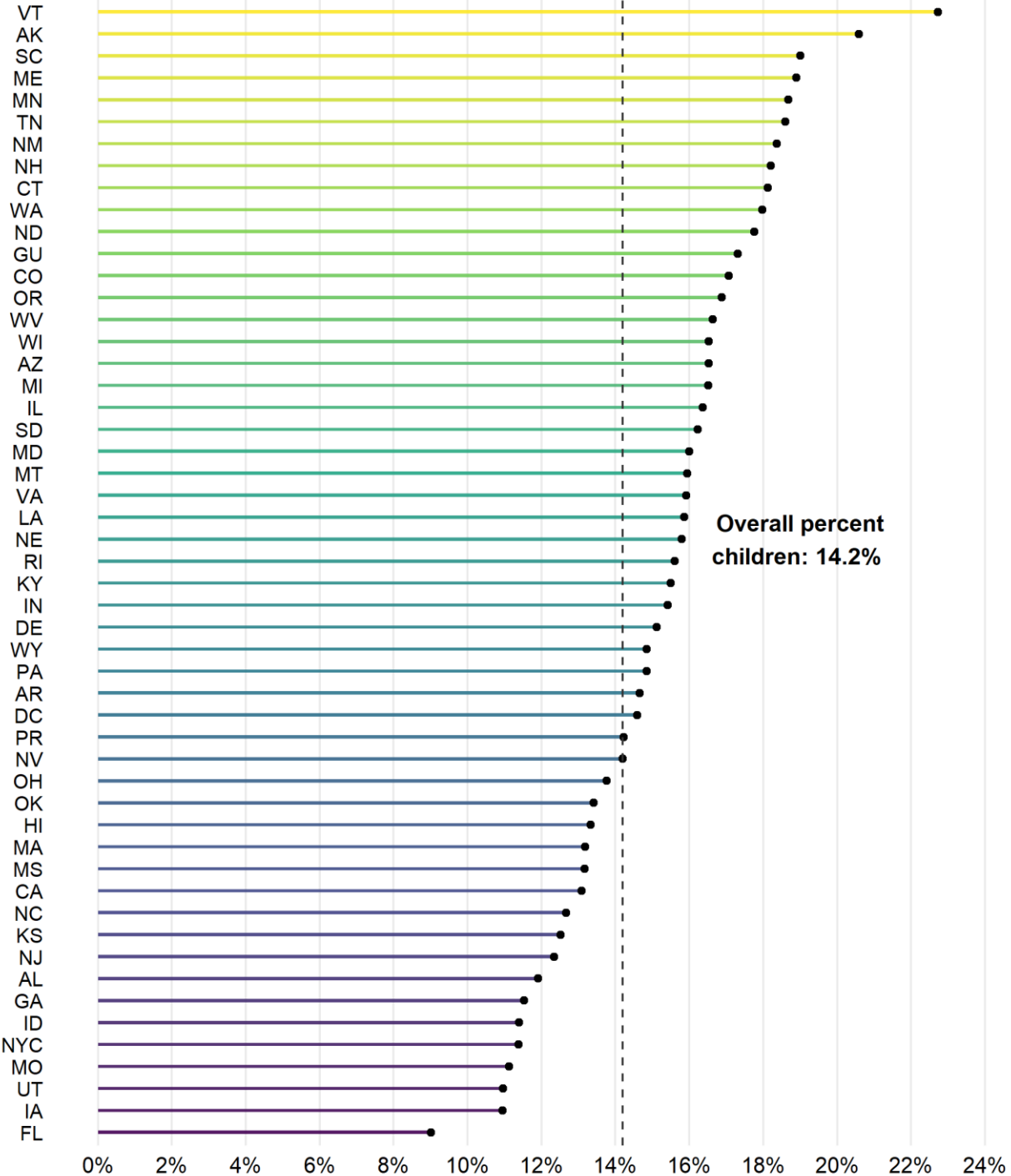
- 4,087,916 total child COVID-19 cases (cumulative)
- Sixteen states reported 100,000+ child cases
- Four states reported fewer than 10,000 child cases



See detail in Appendix: Data from 48 states, NYC, DC, PR, and GU (TX excluded from figure)
 All data reported by state/local health departments are preliminary and subject to change
 Analysis by American Academy of Pediatrics and Children's Hospital Association
 As of 6/30/21, NE COVID-19 dashboard is no longer available; NE cumulative cases through 6/24/21

Fig 3. Percent of Cumulative COVID-19 Cases that were Children: 7/15/21

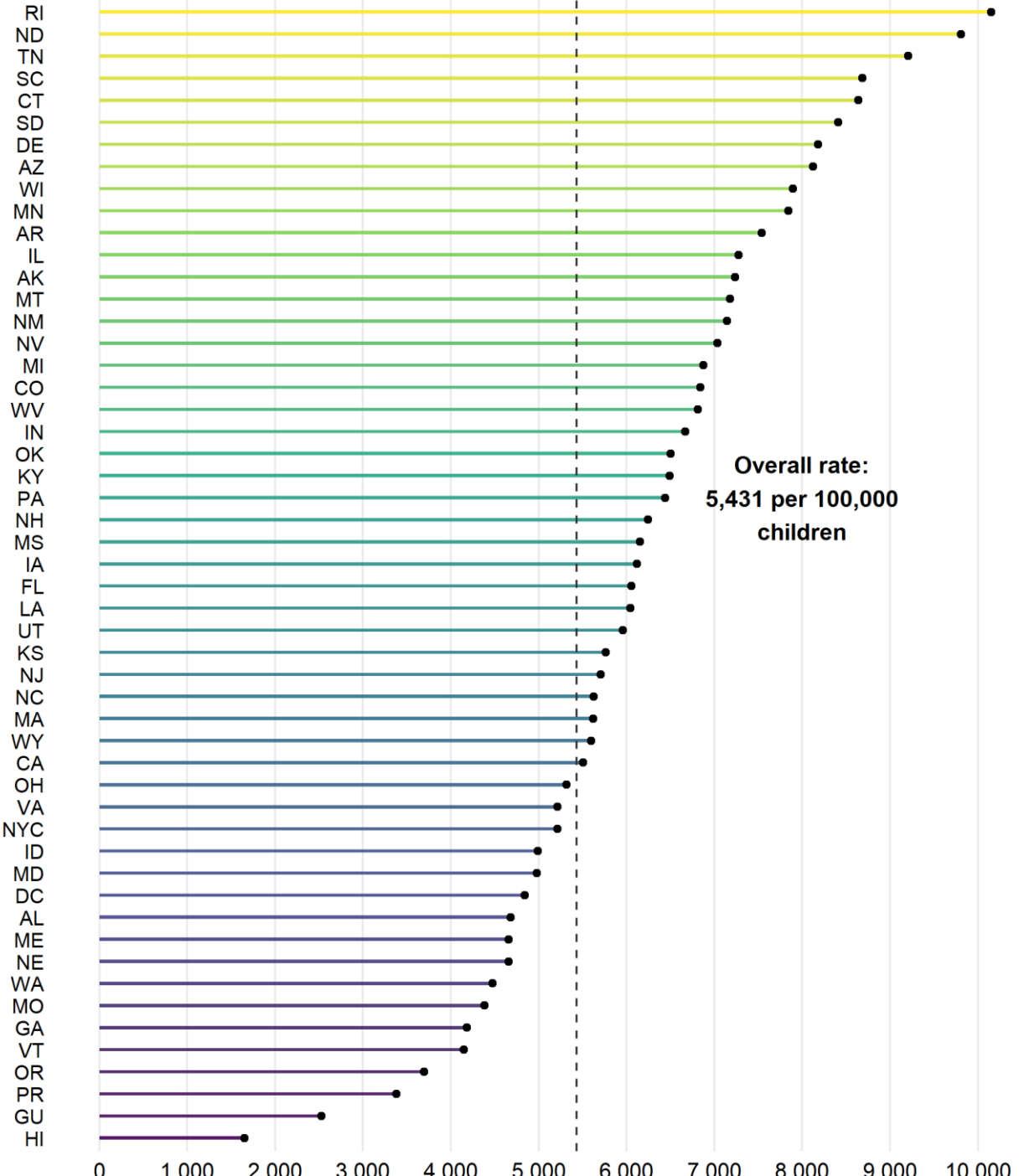
- Children represented 14.2% (4,087,916/28,793,845) of all available cases
- Ten states reported 18% or more of cumulated cases were children



See detail in Appendix: Data from 48 states, NYC, DC, PR, and GU (TX excluded from figure)
 All data reported by state/local health departments are preliminary and subject to change
 Analysis by American Academy of Pediatrics and Children's Hospital Association
 As of 6/30/21, NE COVID-19 dashboard is no longer available; NE cumulative cases through 6/24/21

Fig 4. Cumulative COVID-19 Cases per 100,000 Children: 7/15/21

- Calculated using state-level population estimates from US Census Bureau (2019)*
- Overall rate: 5,431 child COVID-19 cases per 100,000 children in the population
- Eight states reported more than 8,000 cases per 100,000

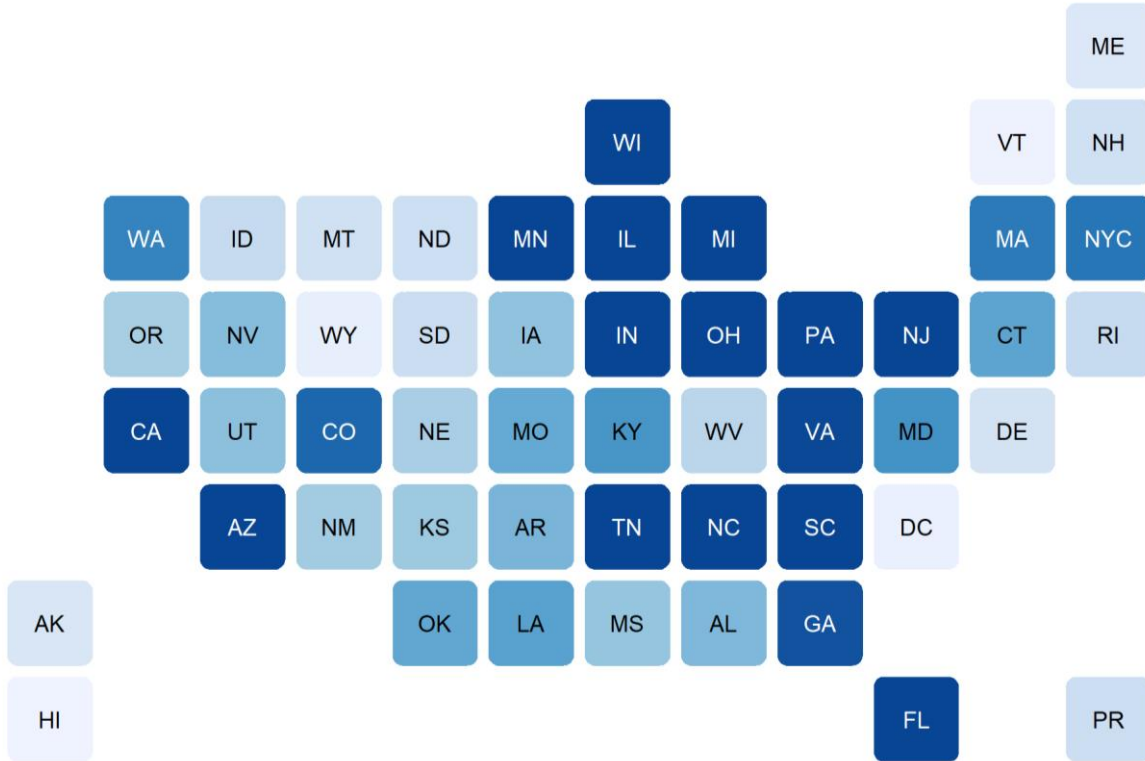


See detail in Appendix: Data from 48 states, NYC, DC, PR, and GU (TX excluded from figure)
 All data reported by state/local health departments are preliminary and subject to change
 Analysis by American Academy of Pediatrics and Children's Hospital Association
 As of 6/30/21, NE COVID-19 dashboard is no longer available; NE cumulative cases through 6/24/21
 * Source: US Census Bureau, State Population by Characteristics: 2010-2019,
<https://www.census.gov/data/tables/time-series/demo/popest/2010s-state-detail.html>

Fig 5. Cumulative Child COVID-19 Cases and Percent Increase in Child Cases

A. Cumulative Child COVID-19 Cases, 7/15/21

16 states with 100,000+ cumulative child cases



Cumulative child COVID-19 cases (thousands) 25 50 75 100+

B. Percent Increase in Child Cases, 7/1/21-7/15/21

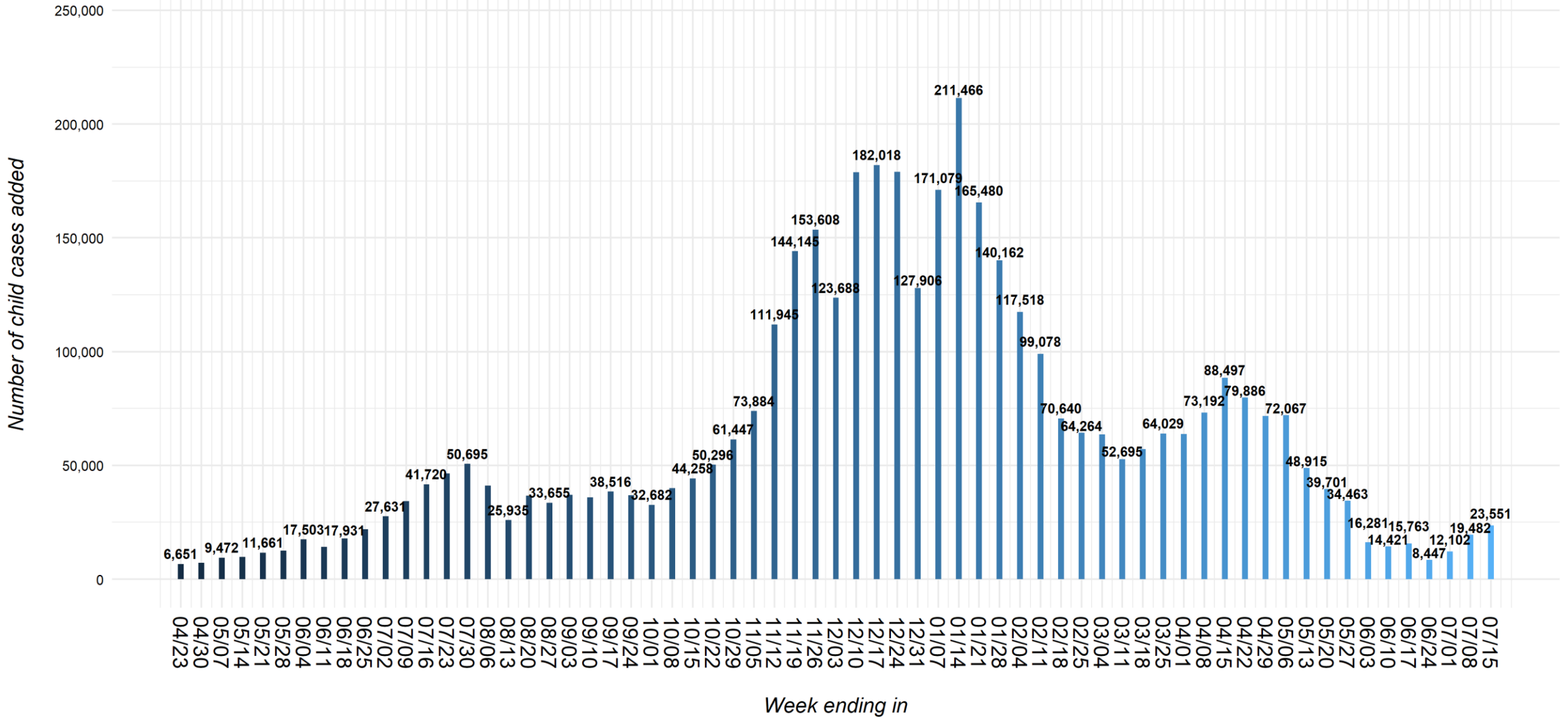
From 7/1-7/15, there were 43,033 child cases added (4,044,884 to 4,087,916; 1% increase)



Percent increase 0 1 2 3+

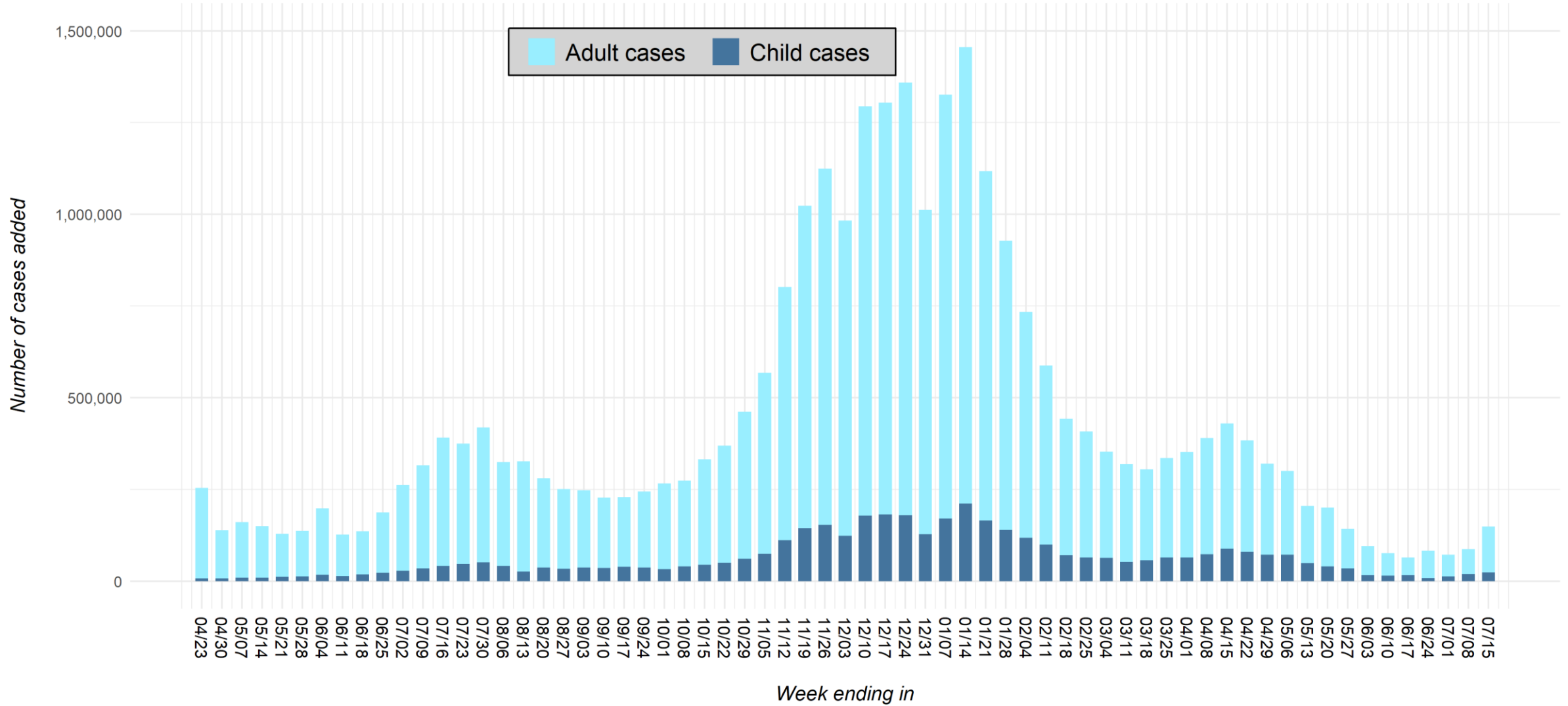
See detail in Appendix: Data from 48 states, NYC, DC, and PR (TX excluded from figures);
 All data reported by state/local health departments are preliminary and subject to change; Analysis by American Academy of Pediatrics and Children's Hospital Association
 As of 6/30/21, NE COVID-19 dashboard is no longer available; NE cumulative cases through 6/24/21
 Due to available data and calculations required to obtain MA child cases, weekly estimates fluctuate (eg, on 7/15/21 there is a downward revision of cumulative child cases, 2,264 fewer cases)
 On 7/15/21, IA revised case data, resulting in a downward revision of cumulative child cases (448 fewer cases)

Fig 6. United States: Number of Child COVID-19 Cases Added in Past Week*



* Note: 4 states changed their definition of child cases: AL as of 8/13/20, HI as of 8/27/20, RI as of 9/10/20, MO as of 10/1/20; TX reported age for only a small proportion of total cases each week (eg, 3-20%)
 On 5/6/21, due to data revision and lag in reporting, RI experienced 30% increase in child cases (4,906 cases added)
 As of 6/30/21, NE COVID-19 dashboard is no longer available; NE cumulative cases through 6/24/21
 Due to available data and calculations required to obtain MA child cases, weekly estimates fluctuate (eg, on 7/15/21 there is a downward revision of cumulative child cases, 2,264 fewer cases)
 On 7/15/21, IA revised case data, resulting in a downward revision of cumulative child cases (448 fewer cases)
 See detail in Appendix: Data from 49 states, NYC, DC, PR and GU
 All data reported by state/local health departments are preliminary and subject to change; Analysis by American Academy of Pediatrics and Children's Hospital Association

Fig 7. United States: Number of COVID-19 Cases Added in Past Week for Children and Adults*



* Note: 4 states changed their definition of child cases: AL as of 8/13/20, HI as of 8/27/20, RI as of 9/10/20, MO as of 10/1/20; TX reported age for only a small proportion of total cases each week (eg, 3-20%)
 On 5/6/21, due to data revision and lag in reporting, RI experienced 30% increase in child cases (4,906 cases added)
 As of 6/30/21, NE COVID-19 dashboard is no longer available; NE cumulative cases through 6/24/21
 Due to available data and calculations required to obtain MA child cases, weekly estimates fluctuate (eg, on 7/15/21 there is a downward revision of cumulative child cases, 2,264 fewer cases)
 On 7/15/21, IA revised case data, resulting in a downward revision of cumulative child cases (448 fewer cases)
 See detail in Appendix: Data from 49 states, NYC, DC, PR and GU
 All data reported by state/local health departments are preliminary and subject to change; Analysis by American Academy of Pediatrics and Children's Hospital Association

Appendix Table 1: Case Data Available on 7/15/21

Summary data across the 49 states, NYC, DC, PR, and GU that provided age distribution of reported COVID-19 cases*

Child population, 2019	Cumulative total cases (all ages)	Cumulative child cases	Cumulative percent children of total cases	Cases per 100,000 children
75,266,842	28,793,845	4,087,916	14.2%	5,431.2

* Note: Data represent cumulative counts since states began reporting; All data reported by state/local health departments are preliminary and subject to change
As of 6/30/21, NE COVID-19 dashboard is no longer available; NE cumulative cases through 6/24/21

Appendix Table 2A: Summary of Child Case Data from 4/16/20 – 7/15/21*

Date	Number of locations reporting age	Cumulative total cases (all ages)	Cumulative child cases [^]	Percent children of total cases	Cases per 100,000 children
7/15/21	49 states, NYC, DC, PR and GU ^{# ±}	28,793,845	4,087,916	14.2%	5431.2
7/8/21	49 states, NYC, DC, PR and GU [#]	28,645,258	4,064,365	14.2%	5399.9
7/1/21	49 states, NYC, DC, PR and GU ^{# Δ}	28,557,884	4,044,884	14.2%	5374.1
6/24/21	49 states, NYC, DC, PR and GU ^{# †}	28,486,004	4,032,782	14.2%	5358.0
6/17/21	49 states, NYC, DC, PR and GU	28,402,723	4,024,335	14.2%	5346.8
6/10/21	49 states, NYC, DC, PR and GU [#]	28,338,538	4,008,572	14.1%	5325.8
6/3/21	49 states, NYC, DC, PR and GU [#]	28,262,591	3,994,151	14.1%	5306.7
5/27/21	49 states, NYC, DC, PR and GU	28,167,723	3,977,870	14.1%	5285.0
5/20/21	49 states, NYC, DC, PR and GU [~]	28,025,875	3,943,407	14.1%	5239.2
5/13/21	49 states, NYC, DC, PR and GU	27,825,369	3,903,706	14.0%	5186.5
5/6/21	49 states, NYC, DC, PR and GU [○]	27,621,153	3,854,791	14.0%	5121.5
4/29/21	49 states, NYC, DC, PR and GU ^{○ ~}	27,320,708	3,782,724	13.8%	5025.8
4/22/21	49 states, NYC, DC, PR and GU	27,001,107	3,711,075	13.7%	4930.6
4/15/21	49 states, NYC, DC, PR, and GU	26,617,913	3,631,189	13.6%	4824.4
4/8/21	49 states, NYC, DC, PR, and GU	26,188,186	3,542,692	13.5%	4706.8
4/1/21	49 states, NYC, DC, PR, and GU [○]	25,798,537	3,469,500	13.4%	4609.6
3/25/21	49 states, NYC, DC, PR, and GU	25,446,361	3,405,638	13.4%	4524.8
3/18/21	49 states, NYC, DC, PR, and GU	25,111,012	3,341,608	13.3%	4439.7

* Note: Data represent cumulative counts since states began reporting; All data reported by state/local health departments are preliminary and subject to change

[^] Unknown: number of children infected but not tested and confirmed

[#] For several weeks in 2021 (2/18, 3/11, 6/3, 6/10, 6/24, 7/1, and 7/15), due to available data and calculations required to obtain child cases, there is a downward revision of cumulative child cases for MA; On 7/15, MA reported 2,264 fewer cases

[±] On 7/15/21, IA revised case data, resulting in a downward revision of cumulative child cases

^Δ As of 6/30/21, NE COVID-19 dashboard is no longer available; NE cumulative cases through 6/24/21

[†] On 6/24/21, due to available CO data and calculation required to obtain child total cases, there is a downward revision of cumulative child cases

[~] On 4/29/21, and 5/20/21, WY revised case data, resulting in a downward revision of cumulative child cases

[○] On 4/1/21 and 4/29/21, RI revised case data, resulting in a downward revision of cumulative cases; On 5/6/21, due to data revision and lag in reporting, RI experienced 30% increase in child cases (4,906 cases added)

Appendix Table 2A, cont.: Summary of Child Case Data from 4/16/20 – 7/15/21*

Date	Number of locations reporting age	Cumulative total cases (all ages)	Cumulative child cases [^]	Percent children of total cases	Cases per 100,000 children
3/11/21	49 states, NYC, DC, PR, and GU# □	24,806,402	3,284,531	13.2%	4363.8
3/4/21	49 states, NYC, DC, PR, and GU	24,487,634	3,231,836	13.2%	4293.8
2/25/21	49 states, NYC, DC, PR, and GU	24,134,958	3,168,274	13.1%	4209.4
2/18/21	49 states, NYC, DC, PR, and GU# ~	23,726,925	3,104,010	13.1%	4124.0
2/11/21	49 states, NYC, DC, PR, and GU	23,284,471	3,033,370	13.0%	4030.2
2/4/21	49 states, NYC, DC, PR, and GU	22,697,315	2,934,292	12.9%	3898.5
1/28/21	49 states, NYC, DC, PR, and GU	21,963,445	2,816,775	12.8%	3742.4
1/21/21	49 states, NYC, DC, PR, and GU	21,036,194	2,676,612	12.7%	3556.2
1/14/21	49 states, NYC, DC, PR, and GU	19,918,714	2,511,132	12.6%	3336.3
1/7/21	49 states, NYC, DC, PR, and GU	18,463,319	2,299,666	12.5%	3055.4
12/31/20	49 states, NYC, DC, PR, and GU	17,137,295	2,128,587	12.4%	2828.1
12/24/20	49 states, NYC, DC, PR, and GU	16,125,324	2,000,681	12.4%	2658.1
12/17/20	49 states, NYC, DC, PR, and GU	14,766,831	1,821,746	12.3%	2420.4
12/10/20	49 states, NYC, DC, PR, and GU	13,462,337	1,639,728	12.2%	2178.6
12/3/20	49 states, NYC, DC, PR, and GU	12,167,620	1,460,905	12.0%	1941.0
11/26/20	49 states, NYC, DC, PR, and GU	11,184,900	1,337,217	12.0%	1776.6
11/19/20	49 states, NYC, DC, PR, and GU	10,060,749	1,183,609	11.8%	1572.6
11/12/20	49 states, NYC, DC, PR, and GU	9,037,991	1,039,464	11.5%	1381.0
11/5/20	49 states, NYC, DC, PR, and GU	8,236,710	927,518	11.3%	1232.3

* Note: Data represent cumulative counts since states began reporting; All data reported by state/local health departments are preliminary and subject to change

[^] Unknown: number of children infected but not tested and confirmed

On 2/18/21, due to available MA data and calculations required to obtain child total cases, there is a downward revision of cumulative child cases

□ On 3/11/21, due to only PR data available and calculation required to obtain child total cases, there is a downward revision of cumulative child cases

~ On 2/18/21, WY revised case data, resulting in a downward revision of cumulative child cases

Appendix Table 2A, cont.: Summary of Child Case Data from 4/16/20 – 7/15/21*

Date	Number of locations reporting age	Cumulative total cases (all ages)	Cumulative child cases [^]	Percent children of total cases	Cases per 100,000 children
10/29/20	49 states, NYC, DC, PR, and GU	7,669,038	853,635	11.1%	1134.1
10/22/20	49 states, NYC, DC, PR, and GU	7,207,186	792,188	11.0%	1052.5
10/15/20	49 states, NYC, DC, PR, and GU	6,837,527	741,891	10.9%	985.7
10/8/20	49 states, NYC, DC, PR, and GU	6,505,390	697,633	10.7%	926.9
10/1/20	49 states, NYC, DC, PR, and GU [#]	6,231,564	657,572	10.6%	873.7
9/24/20	49 states, NYC, DC, PR, and GU	5,965,268	624,890	10.5%	828.5
9/17/20	49 states, NYC, DC, PR, and GU	5,721,402	587,948	10.3%	779.5
9/10/20	49 states, NYC, DC, PR, and GU	5,493,006	549,432	10.0%	728.5
9/3/20	49 states, NYC, DC, PR, and GU	5,265,157	513,415	9.8%	680.3
8/27/20	49 states, NYC, DC, PR, and GU	5,018,113	476,439	9.5%	631.3
8/20/20	49 states, NYC, DC, PR, and GU	4,766,825	442,785	9.3%	583.2
8/13/20	49 states, NYC, DC, PR, and GU ⁻	4,486,830	406,109	9.1%	538.1
8/6/20	49 states, NYC, DC, PR, and GU	4,159,947	380,174	9.1%	500.7
7/30/20	49 states, NYC, DC, PR, and GU	3,835,573	338,982	8.8%	446.5
7/23/20	49 states, NYC, DC, PR, and GU	3,416,630	288,287	8.4%	379.7

* Note: Data represent cumulative counts since states began reporting; All data reported by state/local health departments are preliminary and subject to change

[^] Unknown: number of children infected but not tested and confirmed

[#] As of 10/1/20, MO changed definition of child case from 0-19 to 0-17 years, resulting in a downward revision of cumulative child cases

⁻ As of 8/13/20, AL changed definition of child case from 0-24 to 0-17 years, resulting in a downward revision of cumulative child cases

Appendix Table 2A, cont.: Summary of Child Case Data from 4/16/20 – 7/15/21*

Date	Number of locations reporting age	Cumulative total cases (all ages)	Cumulative child cases [^]	Percent children of total cases	Cases per 100,000 children
7/16/20	49 states, NYC, DC, PR, and GU	3,042,413	241,904	8.0%	318.6
7/9/20	49 states, NYC, DC, PR, and GU	2,651,066	200,184	7.6%	263.7
7/2/20	49 states, NYC, DC, PR, and GU	2,335,060	165,845	7.1%	218.4
6/25/20	49 states, NYC, DC, PR, and GU	2,073,387	138,213	6.7%	182.0
6/18/20	49 states, NYC, DC, PR, and GU	1,885,905	116,176	6.2%	153.0
6/11/20	49 states, NYC, DC, PR, and GU	1,750,240	98,246	5.6%	129.4
6/4/20	49 states, NYC, DC, PR, and GU	1,623,334	84,016	5.2%	110.7
5/28/20	47 states, NYC, DC, PR, and GU	1,425,154	66,513	4.7%	91.5
5/21/20	47 states, NYC, DC, PR, and GU	1,288,305	54,031	4.2%	74.4
5/14/20	47 states, NYC, DC, PR, and GU	1,159,407	42,370	3.7%	58.3
5/7/20	46 states, NYC, DC, PR, and GU	1,010,112	32,568	3.2%	45.0
4/30/20	47 states, NYC, DC, and PR	849,615	23,096	2.7%	31.8
4/23/20	48 states, NYC, DC, PR, and GU	710,953	15,911	2.2%	21.2
4/16/20	46 states, NYC, and DC	456,923	9,259	2.0%	13.3

* Note: Data represent cumulative counts since states began reporting; All data reported by state/local health departments are preliminary and subject to change

[^] Unknown: number of children infected but not tested and confirmed

Appendix Table 2B: Summary of Child Hospitalization Data from 5/21/20 –7/15/21*

Date	Number of locations reporting age distribution of hospitalizations	Cumulative total hospitalizations (all ages)	Cumulative child hospitalizations	Percent children of total hospitalizations	Hospitalization rate [^]
7/15/21	23 states and NYC ^{○ Δ}	743,863	16,756	2.3%	0.9%
7/8/21	23 states and NYC ^{○ ±}	740,371	16,623	2.2%	0.9%
7/1/21	23 states and NYC ^{~○ Δ}	737,706	16,520	2.2%	0.9%
6/24/21	23 states and NYC ^{○ #}	728,647	15,783	2.2%	0.9%
6/17/21	23 states and NYC ^{○ □ †}	819,143	16,997	2.1%	0.9%
6/10/21	24 states and NYC [○]	817,386	16,958	2.1%	0.9%
6/3/21	24 states and NYC [○]	813,351	16,822	2.1%	0.8%
5/27/21	24 states and NYC	800,302	16,525	2.1%	0.8%
5/20/21	24 states and NYC	793,175	16,261	2.1%	0.8%
5/13/21	24 states and NYC	786,279	16,013	2.0%	0.8%
5/6/21	24 states and NYC	778,080	15,740	2.0%	0.8%
4/29/21	24 states and NYC	768,506	15,456	2.0%	0.8%
4/22/21	24 states and NYC	759,280	15,187	2.0%	0.8%
4/15/21	24 states and NYC [~]	749,202	14,849	2.0%	0.8%
4/8/21	24 states and NYC	738,793	14,489	2.0%	0.8%
4/1/21	24 states and NYC	722,365	14,179	2.0%	0.8%

* Note: Data represent cumulative counts since states began reporting; All data reported by state/local health departments are preliminary and subject to change

[^] Hospitalization rate = number of child hospitalizations / number of child cases

[○] On 6/3/21, 6/10/21, 6/17/21, 6/24/21, 7/1/21, 7/8/21, and 7/15/21, SD revised hospitalization data, resulting in a downward revision of cumulative child hospitalizations and cumulative hospitalizations for all ages

^Δ On 7/1/21, AZ revised hospitalization data resulting in a 33% increase in cumulative child hospitalizations (592 child hospitalizations added); On 7/15/21, AZ revised hospitalization data resulting in a downward revision of cumulative child hospitalizations

[±] On 7/8/21, GA revised hospitalization data, resulting in a downward revision of cumulative child hospitalizations

[~] On 4/15/21, NE revised hospitalization data, resulting in a downward revision of cumulative hospitalizations for all ages; As of 6/30/21, NE COVID-19 dashboard is no longer available; NE cumulative hospitalizations through 6/24/21

[#] On 6/24/21, FL stopped reporting hospitalization data, resulting in a downward revision of cumulative child hospitalizations and cumulative hospitalizations for all ages

[□] On 6/17/21, RI revised hospitalization data, resulting in a downward revision of cumulative child hospitalizations and cumulative hospitalizations for all ages

[†] On 6/17/21, VA revised hospitalization data resulting in a downward revision of cumulative child hospitalizations

Appendix Table 2B, cont.: Summary of Child Hospitalization Data from 5/21/20 – 7/15/21*

Date~	Number of locations reporting age distribution of hospitalizations	Cumulative total hospitalizations (all ages)	Cumulative child hospitalizations	Percent children of total hospitalizations	Hospitalization rate^
3/25/21	24 states and NYC	713,236	13,953	2.0%	0.8%
3/18/21	24 states and NYC	699,071	13,540	1.9%	0.8%
3/11/21	24 states and NYC	690,206	13,283	1.9%	0.8%
3/4/21	23 states and NYC#	656,757	12,531	1.9%	0.8%
2/25/21	24 states and NYC	665,821	12,630	1.9%	0.8%
2/18/21	24 states and NYC	652,528	12,329	1.9%	0.8%
2/11/21	24 states and NYC	639,318	11,960	1.9%	0.8%
2/4/21	24 states and NYC	623,006	11,585	1.9%	0.8%
1/28/21	24 states and NYC	605,509	11,192	1.8%	0.8%
1/21/21	24 states and NYC	581,897	10,660	1.8%	0.8%
1/14/21	24 states and NYC	560,125	10,182	1.8%	0.8%
1/7/21	24 states and NYC	533,910	9,661	1.8%	0.9%
12/31/20	24 states and NYC	510,384	9,259	1.8%	0.9%
12/17/20	24 states and NYC	468,643	8,411	1.8%	0.9%
12/10/20	24 states and NYC	445,394	7,913	1.8%	0.9%
12/3/20	24 states and NYC	421,766	7,515	1.8%	1.0%
11/19/20	24 states and NYC	381,141	6,716	1.8%	1.1%

* Note: Data represent cumulative counts since states began reporting; All data reported by state/local health departments are preliminary and subject to change
 ~ Data from weeks ending 11/26/20 and 12/24/20 are not included

^ Hospitalization rate = number of child hospitalizations / number of child cases

On 3/4/21, SC not included due to incomplete data, resulting in a downward revision of cumulative hospitalizations for all ages

Appendix Table 2B, cont.: Summary of Child Hospitalization Data from 5/21/20 – 7/15/21*

Date	Number of locations reporting age distribution of hospitalizations	Cumulative total hospitalizations (all ages)	Cumulative child hospitalizations	Percent children of total hospitalizations	Hospitalization rate [^]
11/12/20	23 states and NYC	362,453	6,337	1.7%	1.2%
11/5/20	24 states and NYC	360,724	6,172	1.7%	1.3%
10/29/20	24 states and NYC	348,296	5,899	1.7%	1.3%
10/22/20	24 states and NYC	324,720	5,585	1.7%	1.3%
10/15/20	24 states and NYC	314,715	5,353	1.7%	1.4%
10/8/20	25 states and NYC [#]	307,135	5,211	1.7%	1.4%
10/1/20	25 states and NYC	302,896	5,340	1.8%	1.6%
9/24/20	25 states and NYC	294,901	5,164	1.8%	1.7%
9/17/20	25 states and NYC	288,345	5,016	1.7%	1.6%
9/10/20	24 states and NYC	270,034	4,677	1.7%	1.8%
9/3/20	23 states and NYC	257,300	4,321	1.7%	1.9%
8/27/20	22 states and NYC	243,056	4,163	1.7%	2.1%
8/20/20	21 states and NYC	234,810	4,062	1.7%	2.2%

* Note: Data represent cumulative counts since states began reporting; All data reported by state/local health departments are preliminary and subject to change

[^] Hospitalization rate = number of child hospitalizations / number of child cases

[#] On 10/8/20, AZ revised hospitalization data, resulting in a downward revision of cumulative child hospitalizations

Appendix Table 2B, cont.: Summary of Child Hospitalization Data from 5/21/20 – 7/15/21*

Date	Number of locations reporting age distribution of hospitalizations	Cumulative total hospitalizations (all ages)	Cumulative child hospitalizations	Percent children of total hospitalizations	Hospitalization rate [^]
8/13/20	21 states and NYC	225,893	3,849	1.7%	2.2%
8/6/20	20 states and NYC	206,189	3,276	1.6%	2.2%
7/30/20	20 states and NYC	195,106	2,669	1.4%	2.0%
7/23/20	20 states and NYC	181,345	2,304	1.3%	2.0%
7/16/20	20 states and NYC	172,787	2,074	1.2%	2.1%
7/9/20	20 states and NYC	164,158	1,948	1.2%	2.4%
7/2/20	20 states and NYC	156,640	1,780	1.1%	2.6%
6/25/20	20 states and NYC	151,583	1,663	1.1%	2.9%
6/18/20	19 states and NYC	140,215	1,433	1.0%	3.2%
6/11/20	19 states and NYC	134,600	1,322	1.0%	3.4%
6/4/20	19 states and NYC	128,779	1,231	1.0%	3.4%
5/28/20	16 states and NYC	114,678	1,054	0.9%	3.8%
5/21/20	17 states and NYC	105,665	891	0.8%	3.8%

* Note: Data represent cumulative counts since states began reporting; All data reported by state/local health departments are preliminary and subject to change

[^] Hospitalization rate = number of child hospitalizations / number of child cases

Appendix Table 2C: Summary of Child Mortality Data from 5/21/20 – 7/15/21*

Date	Number of locations reporting age distribution of deaths	Cumulative total deaths (all ages)	Cumulative child deaths	Percent children of total deaths	Percent of child cases resulting in death [^]
7/15/21	43 states, NYC, PR and GU	525,470	346	0.07%	0.01%
7/8/21	43 states, NYC, PR and GU	523,848	344	0.07%	0.01%
7/1/21	43 states, NYC, PR and GU [○] ~	522,380	335	0.06%	0.01%
6/24/21	43 states, NYC, PR and GU	520,660	336	0.06%	0.01%
6/17/21	42 states, NYC, PR and GU	518,016	335	0.06%	0.01%
6/10/21	43 states, NYC, PR and GU [□]	516,663	330	0.06%	0.01%
6/3/21	43 states, NYC, PR and GU	514,325	327	0.06%	0.01%
5/27/21	43 states, NYC, PR and GU	511,346	322	0.06%	0.01%
5/20/21	43 states, NYC, PR and GU [○]	507,373	316	0.06%	0.01%
5/13/21	43 states, NYC, PR and GU	503,900	308	0.06%	0.01%
5/6/21	43 states, NYC, PR and GU	500,262	306	0.06%	0.01%
4/29/21	43 states, NYC, PR and GU	496,248	303	0.06%	0.01%
4/22/21	43 states, NYC, PR and GU	492,057	296	0.06%	0.01%
4/15/21	43 states, NYC, PR and GU	487,881	297	0.06%	0.01%
4/8/21	43 states, NYC, PR and GU	481,112	292	0.06%	0.01%
4/1/21	43 states, NYC, PR and GU	476,994	284	0.06%	0.01%

* Note: Data represent cumulative counts since states began reporting; All data reported by state/local health departments are preliminary and subject to change

[^] Number of child deaths / number of child cases

○ On 5/20/21, NE revised mortality data, resulting in a downward revision of cumulative deaths for all ages; As of 6/30/21, NE COVID-19 dashboard is no longer available; NE cumulative deaths through 6/24/21

~ On 7/1/21, AL revised mortality data, resulting in a downward revision of cumulative child deaths

□ On 6/10/21, WA revised mortality data, resulting in a downward revision of cumulative deaths for all ages

Appendix Table 2C: Summary of Child Mortality Data from 5/21/20 – 7/15/21*

Date	Number of locations reporting age distribution of deaths	Cumulative total deaths (all ages)	Cumulative child deaths	Percent children of total deaths	Percent of child cases resulting in death [^]
3/25/21	43 states, NYC, PR and GU [○]	471,104	279	0.06%	0.01%
3/18/21	43 states, NYC, PR and GU [□]	464,201	268	0.06%	0.01%
3/11/21	43 states, NYC, PR and GU	457,061	266	0.06%	0.01%
3/4/21	43 states, NYC, and GU [#]	444,878	253	0.06%	0.01%
2/25/21	43 states, NYC, and GU	438,657	256	0.06%	0.01%
2/18/21	43 states, NYC, and GU	425,350	247	0.06%	0.01%
2/11/21	43 states, NYC, and GU	407,222	241	0.06%	0.01%
2/4/21	43 states, NYC, and GU	388,204	227	0.06%	0.01%
1/28/21	43 states, NYC, and GU	369,149	215	0.06%	0.01%
1/21/21	43 states, NYC, and GU	348,860	205	0.06%	0.01%
1/14/21	43 states and NYC	330,261	191	0.06%	0.01%
1/7/21	42 states and NYC	297,914	188	0.06%	0.01%

* Note: Data represent cumulative counts since states began reporting; All data reported by state/local health departments are preliminary and subject to change

[^] Number of child deaths / number of child cases

○ On 3/25/21, VA revised mortality data, resulting in a downward revision of cumulative deaths for all ages

□ On 3/18/21, KS revised mortality data, resulting in a downward revision of cumulative deaths for all ages

On 3/4/21, OH revised mortality data, resulting in a downward revision of cumulative deaths for all ages

Appendix Table 2C, cont.: Summary of Child Mortality Data from 5/21/20 – 7/15/21*

Date~	Number of locations reporting age distribution of deaths	Cumulative total deaths (all ages)	Cumulative child deaths	Percent children of total deaths	Percent of child cases resulting in death^
12/31/20	43 states and NYC	294,443	179	0.06%	0.01%
12/17/20	42 states and NYC	263,833	172	0.07%	0.01%
12/10/20	42 states and NYC	249,442	162	0.06%	0.01%
12/3/20	43 states and NYC	236,996	154	0.06%	0.01%
11/19/20	43 states and NYC	218,007	138	0.06%	0.01%
11/12/20	42 states and NYC	210,441	133	0.06%	0.01%
11/5/20	42 states and NYC	199,564	123	0.06%	0.01%
10/29/20	42 states and NYC	194,175	121	0.06%	0.02%
10/22/20	42 states and NYC	189,250	120	0.06%	0.02%
10/15/20	42 states and NYC	184,294	120	0.07%	0.02%
10/8/20	42 states and NYC	180,014	115	0.06%	0.02%
10/1/20	42 states and NYC	175,423	112	0.06%	0.02%
9/24/20	42 states and NYC	170,971	109	0.06%	0.02%
9/17/20	42 states and NYC	167,019	109	0.07%	0.02%
9/10/20	42 states and NYC	160,856	105	0.07%	0.02%
9/3/20	42 states and NYC	156,053	103	0.07%	0.02%

* Note: Data represent cumulative counts since states began reporting; All data reported by state/local health departments are preliminary and subject to change
 ~ Data from weeks ending 11/26/20 and 12/24/20 are not included
 ^ Number of child deaths / number of child cases

Appendix Table 2C, cont.: Summary of Child Mortality Data from 5/21/20 – 7/15/21*

Date	Number of locations reporting age distribution of deaths	Cumulative total deaths (all ages)	Cumulative child deaths	Percent children of total deaths	Percent of child cases resulting in death [^]
8/27/20	43 states and NYC [#]	152,884	101	0.07%	0.02%
8/20/20	45 states and NYC	154,279	92	0.06%	0.02%
8/13/20	45 states and NYC	147,356	90	0.06%	0.02%
8/6/20	44 states and NYC	139,685	90	0.06%	0.02%
7/30/20	44 states and NYC	133,267	86	0.06%	0.03%
7/23/20	44 states and NYC	121,539	76	0.06%	0.03%
7/16/20	43 states and NYC	119,265	66	0.06%	0.03%
7/9/20	42 states and NYC	112,289	62	0.06%	0.03%
7/2/20	42 states and NYC	108,513	58	0.05%	0.04%
6/25/20	42 states and NYC	104,683	57	0.05%	0.04%
6/18/20	42 states and NYC	101,056	54	0.05%	0.05%
6/11/20	40 states and NYC	89,866	48	0.05%	0.05%
6/4/20	40 states and NYC	91,241	46	0.05%	0.06%
5/28/20	39 states and NYC	82,298	30	0.04%	0.05%
5/21/20	38 states and NYC	71,689	28	0.04%	0.06%

* Note: Data represent cumulative counts since states began reporting; All data reported by state/local health departments are preliminary and subject to change

[^] Number of child deaths / number of child cases

[#] As of 8/27/20, RI, MI, and SC not reporting age distributions of COVID-19 deaths (exact numbers not provided for <5 deaths); mortality data from those states excluded

Appendix Table 3A: Child COVID-19 Case Data Available on 7/15/21*



Click location name to view original data source

Location	Age range	Child population, 2019	Cumulative child cases	Percent children of total cases	Cumulative total cases (all ages)	Cases per 100,000 children
Alabama[^]	0-17	1,088,668	50,959	11.9%	427,865	4680.8
Alaska	0-19	196,852	14,248	20.6%	69,187	7237.9
Arizona	0-19	1,838,598	149,353	16.5%	903,851	8123.2
Arkansas	0-17	700,155	52,793	14.7%	360,258	7540.2
California	0-17	8,894,641	489,703	13.1%	3,743,714	5505.6
Colorado^o	0-19	1,407,971	96,303	17.1%	564,164	6839.8
Connecticut	0-19	735,193	63,515	18.1%	350,386	8639.2
Delaware	0-17	203,572	16,659	15.1%	110,182	8183.3
District of Columbia	0-19	149,337	7,231	14.6%	49,574	4842.1
Florida	0-14	3,512,139	212,728	9.0%	2,361,360	6056.9
Georgia	0-17	2,503,881	104,793	11.5%	909,082	4185.2
Guam	0-19	57,727	1,460	17.3%	8,431	2529.1
Hawaii	0-17	299,868	4,953	13.3%	37,171	1651.7
Idaho	0-17	448,201	22,377	11.4%	196,489	4992.6
Illinois	0-19	3,145,309	228,779	16.4%	1,398,409	7273.7
Indiana	0-19	1,755,070	117,047	15.4%	759,062	6669.1
Iowa[□]	0-17	726,841	44,493	11.0%	406,319	6121.4
Kansas	0-17	700,250	40,358	12.5%	322,264	5763.4
Kentucky	0-19	1,118,934	72,611	15.5%	468,680	6489.3
Louisiana	0-17	1,087,630	65,733	15.9%	414,327	6043.7
Maine	0-19	281,158	13,105	18.9%	69,373	4661.1
Maryland	0-19	1,489,721	74,181	16.0%	463,665	4979.5
Massachusetts[#]	0-19	1,558,231	87,611	13.2%	664,575	5622.5
Michigan	0-19	2,407,690	165,588	16.5%	1,002,488	6877.5
Minnesota	0-19	1,445,346	113,373	18.7%	607,069	7844.0
Mississippi	0-17	698,583	42,981	13.2%	326,270	6152.6
Missouri[†]	0-17	1,370,585	60,061	11.1%	540,189	4382.1

* Note: Data represent cumulative counts since states began reporting; All data reported by state/local health departments are preliminary and subject to change

[^] As of 8/13/20, AL changed definition of child case from 0-24 to 0-17 years

^o On 6/24/21, due to available CO data and calculation required to obtain child total, there is a downward revision of cumulative child cases

[□] On 7/15/21, IA revised case data, resulting in a downward revision of cumulative child cases

[#] As of 9/3/20, MA changed reporting from total child cases to cases added in last two weeks; 7/15/21 totals calculated using MA Dept. of Public Health COVID-19 Dashboard published 7/15/21 (data from 6/27/21-7/10/21) and 6/24/21 version of this report;

For several weeks in 2021 (2/18, 3/11, 6/3, 6/10, 6/24, 7/1, and 7/15), due to available data and calculations required to obtain child cases, there is a downward revision of cumulative child cases for MA; On 7/15, MA reported 2,264 fewer cases

[†] As of 10/1/20, MO changed definition of child case from 0-19 to 0-17 years

Appendix Table 3B: Child COVID-19 Case Data Available on 7/15/21*



Click location name to view original data source

Location	Age range	Child population, 2019	Cumulative child cases	Percent children of total cases	Cumulative total cases (all ages)	Cases per 100,000 children
Montana	0-19	254,416	18,261	15.9%	114,508	7177.6
Nebraska[~]	0-19	760,272	35,425	15.8%	224,206	4659.5
Nevada	0-19	688,997	48,463	14.2%	341,292	7033.9
New Hampshire	0-19	291,038	18,169	18.2%	99,840	6242.8
New Jersey	0-17	1,938,578	110,599	12.3%	896,191	5705.2
New Mexico	0-19	531,712	37,981	18.4%	206,846	7143.2
North Carolina	0-17	2,300,715	129,434	12.7%	1,021,853	5625.8
North Dakota	0-19	200,777	19,696	17.8%	110,958	9809.9
NYC	0-17	1,726,900	90,024	11.4%	791,012	5213.0
Ohio	0-19	2,886,873	153,473	13.8%	1,115,242	5316.2
Oklahoma	0-17	952,238	61,947	13.4%	461,893	6505.4
Oregon	0-19	965,480	35,677	16.9%	211,315	3695.3
Pennsylvania	0-19	2,801,187	180,377	14.8%	1,215,352	6439.3
Puerto Rico[□]	0-19	594,011	20,075	14.2%	141,100	3379.6
Rhode Island[○]	0-18	220,525	22,387	15.6%	143,505	10151.7
South Carolina	0-20	1,314,988	114,234	19.0%	601,232	8687.1
South Dakota	0-19	240,567	20,239	16.2%	124,750	8413.0
Tennessee	0-20	1,762,659	162,261	18.6%	872,362	9205.5
Texas[^]	0-19	8,210,585	5,607	7.0%	80,313	--
Utah	0-14	774,764	46,155	11.0%	421,257	5957.3
Vermont	0-19	134,415	5,575	22.7%	24,529	4147.6
Virginia	0-19	2,087,426	108,882	15.9%	684,054	5216.1
Washington	0-19	1,840,306	82,396	18.0%	458,517	4477.3
West Virginia	0-19	402,473	27,430	16.6%	164,843	6815.3
Wisconsin	0-19	1,422,095	112,274	16.5%	679,389	7895.0
Wyoming[#]	0-18	140,694	7,880	14.8%	53,082	5600.8

* Note: Data represent cumulative counts since states began reporting; All data reported by state/local health departments are preliminary and subject to change

~ As of 6/30/21, NE COVID-19 dashboard is no longer available; NE cumulative cases through 6/24/21

□ On 3/11/21, due to only PR data available and calculation required to obtain child total, there is a downward revision of cumulative child cases

○ On 4/1/21 and 4/29/21, RI revised case data, resulting in downward revision of cumulative cases; On 5/6/21, due to data revision and lag in reporting, RI experienced 30% increase in child cases (4,906 cases added)

^ Texas reported age for only 3% of total confirmed cases; Cases per 100,000 children omitted for Texas; Data for Texas in this report is limited to the case count for which age is provided

On 2/18/21, 4/29/21, and 5/20/21, WY revised case data, resulting in a downward revision of cumulative child cases

Appendix Table 4: Child Testing Data Available on 7/15/21*

COVID-19 Testing and Children

Location	Age range	Cumulative total tests (all ages)	Cumulative child tests	Percent children of total tests	Positive rate [^]
Arizona	0-19	4,665,057	859,135	18.4%	17.4%
Illinois	0-19	26,218,311	3,569,088	13.6%	6.4%
Indiana	0-19	10,994,218	2,183,452	19.9%	5.4%
Iowa^o	0-17	2,143,750	128,625	6.0%	34.6%
Minnesota[~]	0-19	10,328,043	1,614,525	15.6%	7.0%
Nevada	0-19	3,598,816	514,631	14.3%	9.4%
New Hampshire	0-19	2,090,659	371,108	17.8%	4.9%
Rhode Island	0-18	887,000	166,562	18.8%	13.4%
Tennessee	0-20	8,273,902	1,514,110	18.3%	10.7%
West Virginia[□]	0-19	3,060,485	355,628	11.6%	7.7%
Wyoming[#]	0-18	800,358	88,199	11.0%	8.9%

* Note: Data represent cumulative counts since states began reporting; All data reported by state/local health departments are preliminary and subject to change

[^] Positive rate = number of child cases / number of child tests

^o On 5/20/21, 5/27/21, 6/3/21, 6/10/21, 6/17/21, 6/24/21, 7/1/21, and 7/8/21, IA revised testing data, resulting in a downward revision of cumulative tests for all ages; On 7/15/21, IA stopped updating child testing data; IA cumulative tests through 7/8/21

[~] On 6/3/21, MN revised testing data, resulting in a downward revision of cumulative child tests; On 6/10/21, MN revised testing data, resulting in a downward revision of cumulative tests for all ages

[□] On 6/17/21, WV revised testing data, resulting in a downward revision of cumulative child tests and cumulative tests for all ages

[#] On 2/11/21 and 3/18/21, WY revised testing data, resulting in a downward revision of cumulative tests for all ages

Appendix Table 5: Child Hospitalization Data Available on 7/15/21*

COVID-19-Associated Hospitalizations and Children

Location	Age range	Cumulative child hospitalizations	Cumulative total hospitalizations (all ages)	Percent children of total hospitalizations	Hospitalization rate [^]
Alaska	0-19	32	1,658	1.9%	0.2%
Arizona[#]	0-19	2,382	66,064	3.6%	1.6%
Colorado	0-19	1,025	32,228	3.2%	1.1%
Georgia[±]	0-17	1,361	65,783	2.1%	1.3%
Hawaii	0-17	48	2,161	2.2%	1.0%
Idaho	0-17	165	8,920	1.8%	0.7%
Indiana	0-19	1,051	60,592	1.7%	0.9%
Kansas	0-17	193	11,295	1.7%	0.5%
Minnesota	0-19	1,099	32,914	3.3%	1.0%
Mississippi	0-17	181	10,198	1.8%	0.4%
Nebraska[~]	0-19	131	6,891	1.9%	0.4%
New Hampshire	0-19	21	1,612	1.3%	0.1%
New Jersey	0-17	1,394	89,852	1.6%	1.3%
NYC	0-17	1,728	110,115	1.6%	1.9%
Ohio	0-19	1,604	61,052	2.6%	1.0%
Oregon	0-19	341	11,927	2.9%	1.0%
Rhode Island[□]	0-18	242	10,557	2.3%	1.1%
South Carolina	0-20	474	23,695	2.0%	0.4%
South Dakota[○]	0-19	133	6,487	2.1%	0.7%
Tennessee	0-20	524	22,473	2.3%	0.3%
Utah	0-14	390	17,904	2.2%	0.8%
Virginia[†]	0-19	619	30,917	2.0%	0.6%
Washington	0-19	543	25,988	2.1%	0.7%
Wisconsin	0-19	1,075	32,580	3.3%	1.0%

* Note: Data represent cumulative counts since states began reporting; All data reported by state/local health departments are preliminary and subject to change

[^] Hospitalization rate = number of child hospitalizations / number of child cases

On 10/8/20 and 7/15/21, AZ revised hospitalization data, resulting in a downward revision of cumulative child hospitalizations; On 7/1/21, AZ revised hospitalization data resulting in a 33% increase in cumulative child hospitalizations (592 added)

± On 7/8/21, GA revised hospitalization data, resulting in a downward revision of cumulative child hospitalizations

~ On 4/15/21, NE revised hospitalization data, resulting in a downward revision of cumulative hospitalizations for all ages; As of 6/30/21, NE COVID-19 dashboard is no longer available; NE cumulative hospitalizations through 6/24/21

□ On 6/17/21, RI revised hospitalization data, resulting in a downward revision of cumulative child hospitalizations and cumulative hospitalizations for all ages

○ On 6/3/21, 6/10/21, 6/17/21, 6/24/21, 7/1/21, 7/8/21, and 7/15/21, SD revised hospitalization data, resulting in a downward revision of child cumulative hospitalizations and cumulative hospitalizations for all ages

† On 6/17/21, VA revised hospitalization data resulting in a downward revision of cumulative child hospitalizations

Appendix Table 6A: Child Mortality Data Available on 7/15/21*

COVID-19-Associated Deaths and Children

Location	Age range	Cumulative child deaths	Cumulative total deaths (all ages)	Percent children of total deaths	Percent of child cases resulting in death [^]
Alabama[#]	0-17	8	11,428	0.07%	0.02%
Alaska	0-19	0	374	0.00%	0.00%
Arizona	0-19	32	18,076	0.18%	0.02%
Arkansas	0-17	0	5,977	0.00%	0.00%
California	0-17	28	63,533	0.04%	0.01%
Colorado	0-19	18	6,869	0.26%	0.02%
Connecticut	0-19	4	8,279	0.05%	0.01%
Delaware	0-17	2	1,696	0.12%	0.01%
District of Columbia	0-19	0	1,145	0.00%	0.00%
Florida	0-15	7	38,157	0.02%	0.00%
Georgia	0-17	11	18,591	0.06%	0.01%
Guam	0-19	2	141	1.42%	0.14%
Hawaii	0-17	1	518	0.19%	0.02%
Idaho	0-17	0	2,165	0.00%	0.00%
Illinois	0-19	21	23,343	0.09%	0.01%
Indiana	0-19	8	13,512	0.06%	0.01%
Iowa	0-17	3	6,158	0.05%	0.01%
Kansas[□]	0-17	2	5,196	0.04%	0.00%
Kentucky	0-19	2	7,276	0.03%	0.00%
Louisiana	0-17	9	9,772	0.09%	0.01%
Maine	0-19	1	877	0.11%	0.01%
Maryland	0-19	10	9,773	0.10%	0.01%
Massachusetts[~]	0-19	8	17,646	0.05%	0.01%
Minnesota	0-19	3	7,630	0.04%	0.00%

* Note: Data represent cumulative counts since states began reporting; All data reported by state/local health departments are preliminary and subject to change;

[^] Number of child deaths / number of child cases;

[#] As of 8/13/20, AL changed definition of child case, resulting in a downward revision of cumulative child deaths; On 7/1/21, AL revised mortality data, resulting in a downward revision of cumulative child deaths

[□] On 3/18/21, KS revised mortality data, resulting in a downward revision of cumulative deaths for all ages

[~] As of 9/3/20, MA changed reporting from total child cases to cases added in last two weeks; 7/15/21 totals calculated using MA Dept. of Public Health COVID-19 Dashboard published 7/15/21 (data from 6/27/21-7/10/21) and 6/24/21 version of this report

Appendix Table 6B: Child Mortality Data Available on 7/15/21*

COVID-19-Associated Deaths and Children

Location	Age range	Cumulative child deaths	Cumulative total deaths (all ages)	Percent children of total deaths	Percent of child cases resulting in death [^]
Mississippi	0-17	3	7,460	0.04%	0.01%
Missouri	0-17	5	9,463	0.05%	0.01%
Nebraska^o	0-19	4	2,259	0.18%	0.01%
Nevada	0-19	6	5,737	0.10%	0.01%
New Hampshire	0-19	0	1,381	0.00%	0.00%
New Jersey	0-17	7	23,811	0.03%	0.01%
North Carolina	0-17	3	13,519	0.02%	0.00%
North Dakota	0-19	1	1,536	0.07%	0.01%
NYC	0-17	26	28,368	0.09%	0.03%
Ohio[~]	0-19	7	20,411	0.03%	0.00%
Oklahoma	0-17	3	7,417	0.04%	0.00%
Oregon	0-19	3	2,803	0.11%	0.01%
Pennsylvania	0-19	13	27,782	0.05%	0.01%
Puerto Rico	0-19	3	2,559	0.12%	0.01%
South Dakota	0-19	0	2,040	0.00%	0.00%
Tennessee	0-20	10	12,625	0.08%	0.01%
Texas[#]	0-19	54	51,455	0.10%	--
Vermont	0-19	0	258	0.00%	0.00%
Virginia[□]	0-19	6	11,471	0.05%	0.01%
Washington[†]	0-19	9	6,027	0.15%	0.01%
Wisconsin	0-19	3	8,196	0.04%	0.00%
Wyoming	0-18	0	760	0.00%	0.00%

* Note: Data represent cumulative counts since states began reporting; All data reported by state/local health departments are preliminary and subject to change; ^ Number of child deaths / number of child cases
^o On 5/20/21, NE revised mortality data, resulting in a downward revision of cumulative deaths for all ages; As of 6/30/21, NE COVID-19 dashboard is no longer available; NE cumulative deaths through 6/24/21
[~] On 3/4/21, OH revised mortality data, resulting in a downward revision of cumulative deaths for all ages
[#] As of 7/30/20, Texas provided age distribution for all COVID-19-associated deaths; Texas reported age for only 3% of total confirmed cases; Percent of child cases resulting in death omitted for Texas; Data for Texas in this report is limited to the case count for which age is provided
[□] On 3/25/21, VA revised mortality data, resulting in a downward revision of cumulative deaths for all ages
[†] On 6/10/21, WA revised mortality data, resulting in a downward revision of cumulative deaths for all ages

Frequently Asked Questions

Q: Why are the AAP and CHA collecting this data?

A: Our goal is to provide a weekly snapshot of how COVID-19 is affecting children in the United States. CDC provides a national number of cases by age on its [COVID-19 data tracker](#), but there are no geographic indicators provided and the age data are not released on a regular schedule. Our data collection method allows for tracking the number of child cases weekly, as well as providing publicly reported case numbers for children at the state level.

Q: The age ranges for children in the report are broad – why were these age ranges chosen and are data available for more specific age ranges of children?

A: Each state makes different decisions about how to report the age distribution of COVID-19 cases, and as a result the age range for reported cases varies by state. For the purposes of this report it is not possible to standardize more detailed age ranges for children based on what is publicly available from the states at this time. Please refer to specific state health department websites of interest to see if the state provides more granular detail of cases by age (see report Appendix for links to all state data sources).

Q: What is the definition of a COVID-19 case?

A: COVID-19 cases are defined as persons who have been identified as a confirmed (via a diagnostic molecular test) or probable (via a clinical diagnosis) case. COVID-19 cases are reported by the states, [following reporting standards established by the CDC](#). For more information on the definitions of confirmed and probable cases, see the following resources: [COVID Tracking Project: Definitions](#); [CDC, COVID-19 Data and Surveillance](#).

Q: Why are only a small portion (<5%) of child COVID-19 cases included for Texas?

A: Texas Department of State Health Services reports overall confirmed cases but only a small fraction are included in the age distribution. Other sources for child COVID-19 cases are not included in the report but outline much higher numbers (eg, [Texas Public Schools COVID-19 Data](#)).

Q: Why does the report not provide the percent of child cases that were symptomatic vs. asymptomatic or that had underlying conditions?

A: For the report, we are limited to the data that states are making publicly available. At this time, states are not providing data related to symptoms or underlying conditions and age. CDC provides some information on COVID-19 hospitalizations by age on the [CDC COVID-NET dashboard](#).

Q: For the child population for each state, does that match the listed age range for the state's child COVID-19 data?

A: Yes, the report uses child population numbers that match on directly with the listed age range for children provided by each state. State population numbers were obtained from the [US Census Bureau](#).

Q: The report provides “cumulative totals” for cases, tests, hospitalizations, and deaths for available states. Are those the total numbers since the states began reporting, or since the AAP and CHA started collecting this data?

A: All “cumulative total” data represent cumulative counts since states began reporting COVID-19 data.

Q: How can I learn more about COVID-19 cases in my state?

A: Links to all state data sources are provided in the Appendix.

Q: Are these data final?

A: No. All data reported by state/local health departments included in this report are preliminary and subject to change and revision as health departments gather more information.

Q: Is this the most recent report available? When will a new report be released?

A: The most recent version of the report is available for [download on the AAP website](#). New reports are made available on a weekly basis at [aap.org/CovidStateData](#).

Additional Resources

- For more information about COVID-19 data in your area, we encourage you to reach out to your state and local health department officials
- Visit the [AAP Critical Updates](#) site for daily updates, resources, and guidance on COVID-19 and pediatrics
- For COVID-19 articles for parents in English and Spanish, visit [HealthyChildren.org](#), the parenting website of the AAP

Contact Information

This a joint report from the American Academy of Pediatrics and the Children's Hospital Association

- For technical questions, please contact the authors at:

Bill Cull, PhD

Director, Health Services Research

American Academy of Pediatrics

wcull@aap.org

Mitch Harris, PhD

Director of Research

Children's Hospital Association

Mitch.Harris@childrenshospitals.org

- For media inquiries, please contact:

Lisa Black

Media Relations

American Academy of Pediatrics

lblack@aap.org

Gillian Ray

External Relations

Children's Hospital Association

Gillian.Ray@childrenshospitals.org

Acknowledgements

Special thanks to the following individuals for their contributions to this report: Alex Rothenburger, MPA (Children's Hospital Association), Vinson Do (Children's Hospital Association), Lynn Olson, PhD (American Academy of Pediatrics), Blake Sisk, PhD (American Academy of Pediatrics), Mary Pat Frintner, MSPH (American Academy of Pediatrics), Liz Gottschlich, MA (American Academy of Pediatrics), Kate Kornfeind, MPH (American Academy of Pediatrics), and Chloe Somberg (American Academy of Pediatrics)