

Children and COVID-19: State Data Report

A joint report from the American Academy of Pediatrics and the Children's Hospital Association

Summary of publicly reported data from 49 states, NYC, DC, PR, and GU

Version: 9/23/21

** Note: The numbers in this report represent cumulative counts since states began reporting. The data are based on how public agencies collect, categorize and post information. All data reported by state/local health departments are preliminary and subject to change and reporting may change over time. Notably, in the summer of 2021, some states have revised cases counts previously reported, begun reporting less frequently, or dropped metrics previously reported. For example, due to several changes on their dashboards and the data currently available, AL, NE, and TX data in this report are not current (cumulative data through 7/29/21, 6/24/21, and 8/26/21 respectively). Readers should consider these factors. States may have additional information on their web sites.*



CHILDREN'S
HOSPITAL
ASSOCIATION

American Academy of Pediatrics

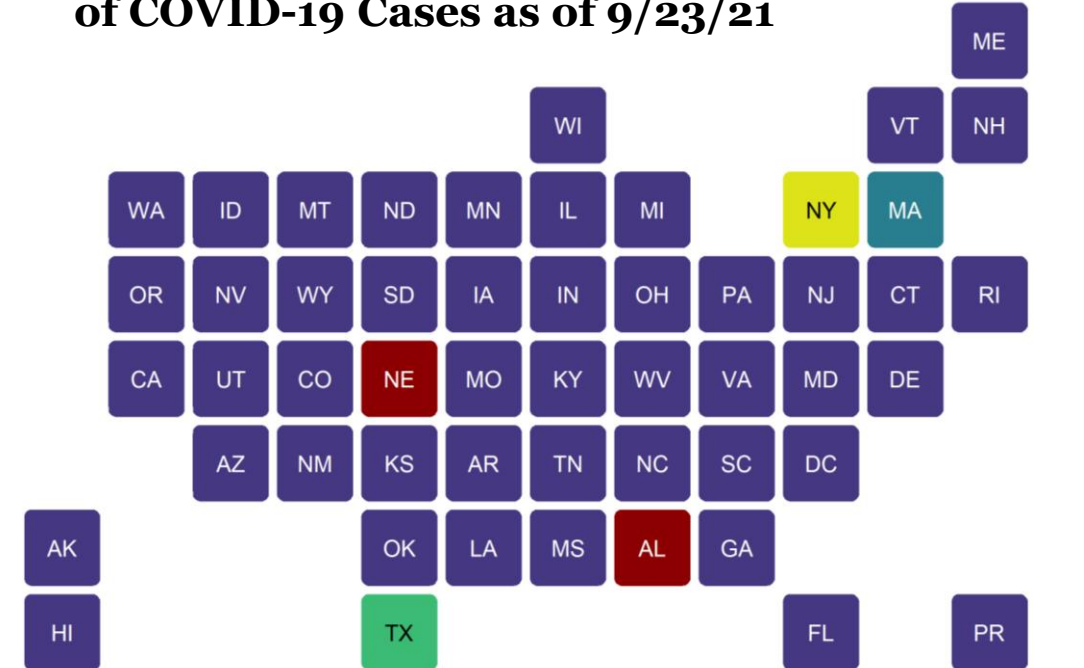
DEDICATED TO THE HEALTH OF ALL CHILDREN®



COVID-19: Available Data for Children

- State-level reports are the best publicly available data on COVID-19 cases in children
- Starting in June 2021, some states reported less frequently and dropped metrics previously reported as overall cases decreased
- This report summarizes what was available on 9/23/21
- **49 states, NYC, DC, Puerto Rico and Guam** provided age distributions of reported COVID-19 cases
 - 11 states provided age distribution of testing
 - 24 states and NYC provided age distribution of hospitalizations
 - 45 states, NYC, PR and Guam provided age distribution of deaths

Fig 1A: States Reporting Age Distribution of COVID-19 Cases as of 9/23/21



Reporting age distribution of COVID-19 cases:

- Yes: Reported age distribution of cases
- TX: Reported age distribution for only 3% of cases; Cases through 8/26
- NY: Only NYC reported age distribution of cases
- MA: Only reported age distribution of cases added in past 2 weeks
- NE: Cases through 6/24/21; AL: Cases through 7/29/21

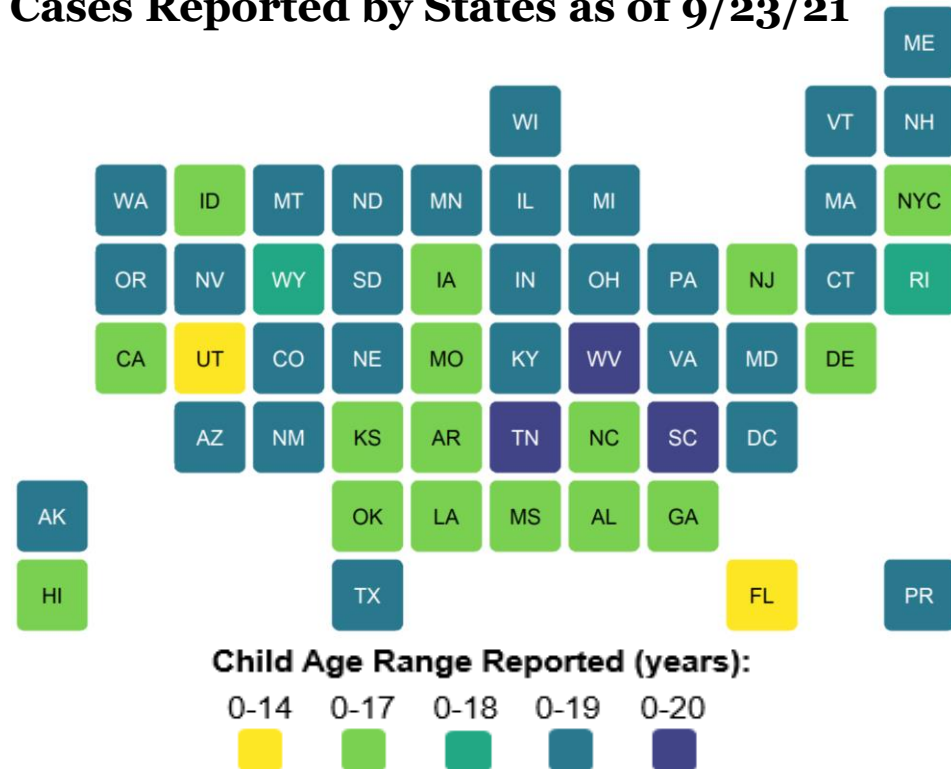
See detail in Appendix: Data from 49 states, NYC, DC, PR, and GU
Analysis by American Academy of Pediatrics and Children's Hospital Association
All data reported by state/local health departments are preliminary and subject to change

Children and COVID-19: Data Limitations

General Limitations

- Format, content, and metrics of reported COVID-19 data differed substantially by state
- Definition of "child": Age ranges reported for children varied by state (0-14, 0-17, 0-18, 0-19, and 0-20 years; see Fig 1B)
- Unknown: Number of children infected but not tested and confirmed

Fig 1B: Child Age Ranges of COVID-19 Cases Reported by States as of 9/23/21



State-Level Changes

- TX: Age distribution reported for only 3% of confirmed cases (99,989/3,318,001), resulting in an undercount of child cases; TX cumulative cases through 8/26/21
- NY: Did not provide age distribution for state-wide cases (NYC only)
- AL: As of 8/13/20, changed definition of child case from 0-24 to 0-17 years; as of 9/17/20, provided age distribution for confirmed cases only; as of 8/5/21, due to change in data available, AL child cases and deaths through 7/29/21
- HI: As of 8/27/20, changed definition of child case from 0-19 to 0-17 years
- MA: As of 9/3/20, revised definition of probable case, leading to a reduction in total case count, and changed reporting from total child cases to cases added in last two weeks
- RI: As of 9/10/20, changed definition of child case from 0-19 to 0-18 years
- MO: As of 10/1/20, changed definition of child cases from 0-19 to 0-17 years
- PR: As of 3/11/21, due to a change in data available, a calculation was required to obtain confirmed and probable child case totals, leading to a reduction in total child case count
- AK: On 6/17/21, did not report child hospitalizations or child deaths
- FL: As of 6/24/21, stopped reporting child hospitalizations
- NE: As of 6/30/21, COVID-19 dashboard is no longer available; NE child cases, hospitalizations, and deaths through 6/24/21
- IA: As of 7/15/21, stopped updating child testing data
- LA: As of 8/5/21, changed reporting total cases and deaths from confirmed to confirmed and probable (combined)
- WV: As of 8/12/21, WV changed definition of child case from 0-19 to 0-20 years

See detail in Appendix: Data from 49 states, NYC, DC, PR, and GU; Analysis by American Academy of Pediatrics and Children's Hospital Association; All data reported by state/local health departments are preliminary and subject to change

Children and COVID-19: 9/23/21

Summary of State-Level Data Provided in this Report

Detail and links to state/local data sources provided in Appendix

Cumulative Number of Child COVID-19 Cases*

- 5,725,680 total child COVID-19 cases reported, and children represented 16.0% (5,725,680/35,852,579) of all cases
- Overall rate: 7,607 cases per 100,000 children in the population

Change in Child COVID-19 Cases*

- 206,864 child COVID-19 cases were reported the past week from 9/16/21-9/23/21 (5,518,815 to 5,725,680) and children represented 26.7% (206,864/775,480) of the weekly reported cases
- Over two weeks, 9/9/21-9/23/21, there was an 8% increase in the cumulated number of child COVID-19 cases (432,843 cases added (5,292,837 to 5,725,680))

Testing (11 states reported)**

- Among states reporting, children made up between 11.4%-22.0% of total cumulated state tests, and between 5.0%-18.0% of children tested were tested positive

Hospitalizations (24 states and NYC reported)*

- Among states reporting, children ranged from 1.6%-4.1% of their total cumulated hospitalizations, and 0.1%-2.0% of all their child COVID-19 cases resulted in hospitalization

Mortality (45 states, NYC, PR and GU reported)*

- Among states reporting, children were 0.00%-0.27% of all COVID-19 deaths, and 7 states reported zero child deaths
- In states reporting, 0.00%-0.03% of all child COVID-19 cases resulted in death

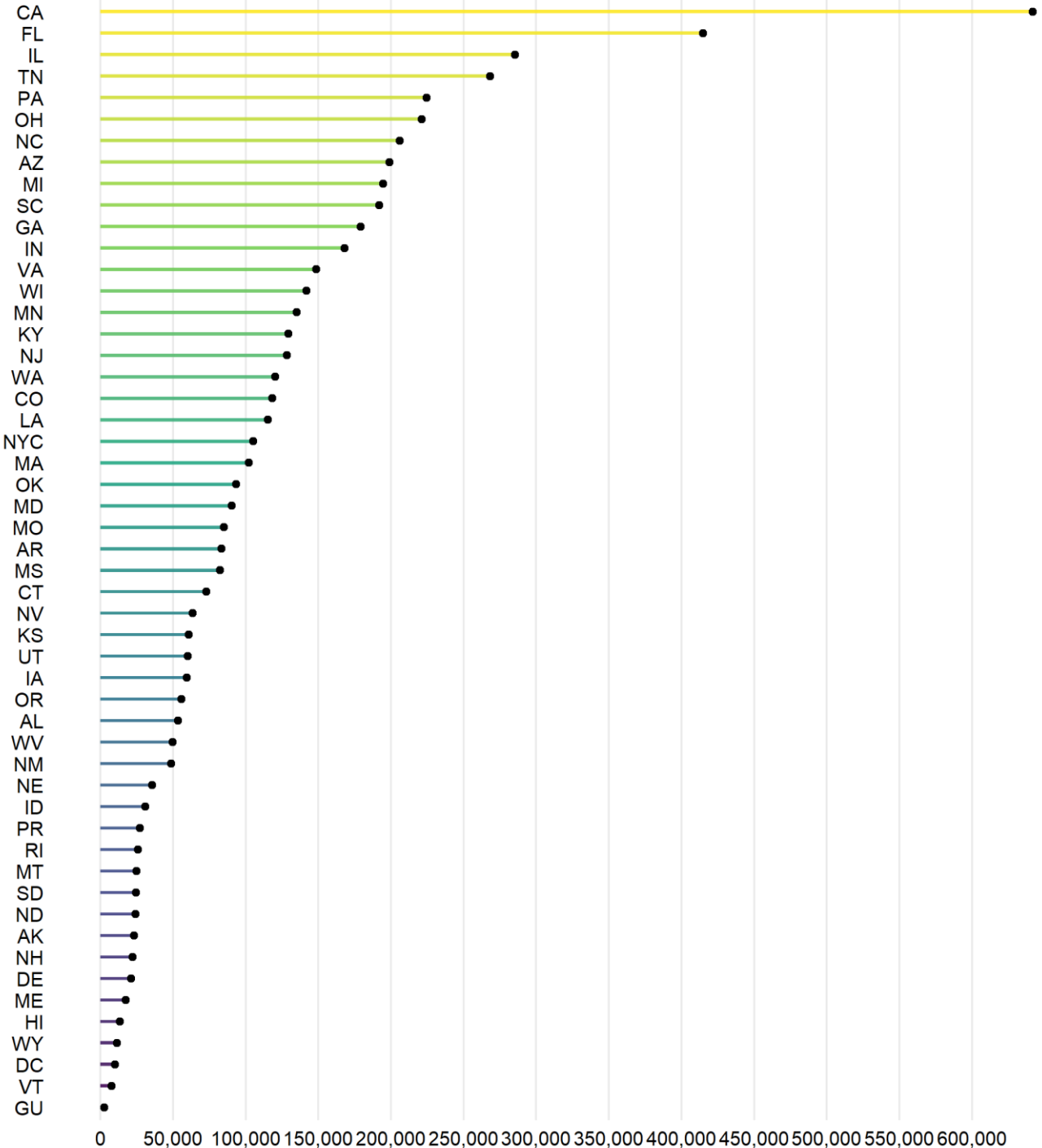
See detail in Appendix: Data from 49 states, NYC, DC, PR, and GU; Analysis by American Academy of Pediatrics and Children's Hospital Association

* Note: The numbers in this summary represent cumulative counts since states began reporting. In this summary and full report, the data are based on how public agencies collect, categorize and post information. All data reported by state/local health departments are preliminary and subject to change and reporting may change over time. Notably, in the summer of 2021, some states have revised cases counts previously reported, begun reporting less frequently, or dropped metrics previously reported. For example, due to several changes on their dashboards and the data currently available, AL, NE, and TX data in this report are not current (cumulative data through 7/29/21, 6/24/21, and 8/26/21 respectively). Readers should consider these factors. States may have additional information on their web sites.

^ On 7/15/21, IA stopped updating child testing data; IA cumulative tests through 7/8/21

Fig 2. Cumulative Number of Child COVID-19 Cases: 9/23/21

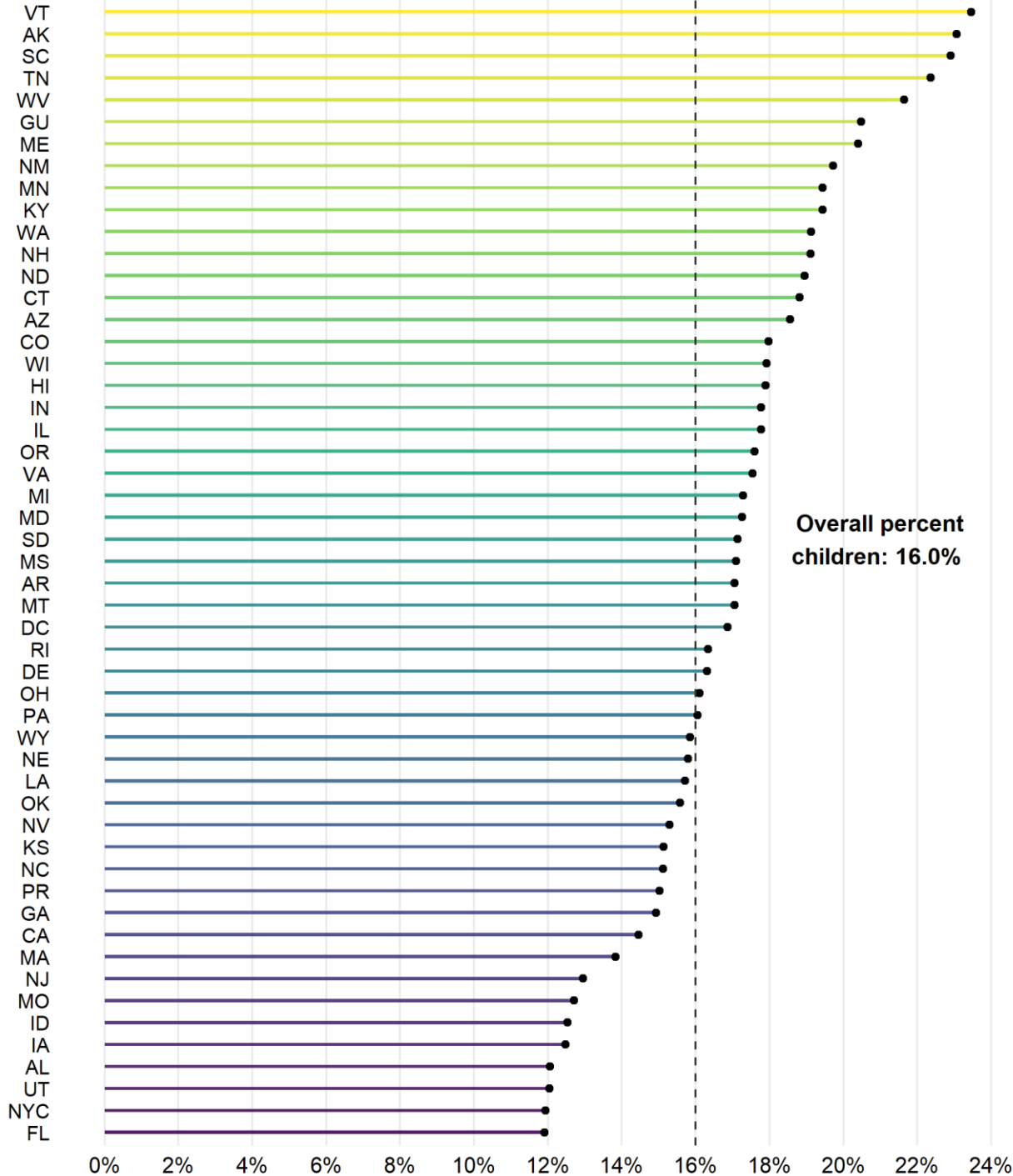
- 5,725,680 total child COVID-19 cases (cumulative)
- Twelve states reported 150,000+ child cases
- One state reported fewer than 10,000 child cases



See detail in Appendix: Data from 48 states, NYC, DC, PR, and GU (TX excluded from figure)
 All data reported by state/local health departments are preliminary and subject to change
 Analysis by American Academy of Pediatrics and Children's Hospital Association
 As of 6/30/21, NE COVID-19 dashboard is no longer available; NE cumulative cases through 6/24/21
 Due to available data and changes made to dashboard, AL cumulative cases through 7/29/21

Fig 3. Percent of Cumulative COVID-19 Cases that were Children: 9/23/21

- Children represented 16.0% (5,725,680/35,852,579) of all available cases
- Fourteen states reported 18% or more of cumulated cases were children



See detail in Appendix: Data from 48 states, NYC, DC, PR, and GU (TX excluded from figure)
All data reported by state/local health departments are preliminary and subject to change
Analysis by American Academy of Pediatrics and Children's Hospital Association
As of 6/30/21, NE COVID-19 dashboard is no longer available; NE cumulative cases through 6/24/21
Due to available data and changes made to dashboard, AL cumulative cases through 7/29/21

Fig 4. Cumulative COVID-19 Cases per 100,000 Children: 9/23/21

- Calculated using state-level population estimates from US Census Bureau (2019)*
- Overall rate: 7,607 child COVID-19 cases per 100,000 children in the population
- Fourteen states reported more than 10,000 cases per 100,000

See detail in Appendix: Data from 48 states, NYC, DC, PR, and GU (TX excluded from figure)
 All data reported by state/local health departments are preliminary and subject to change
 Analysis by American Academy of Pediatrics and Children's Hospital Association
 As of 6/30/21, NE COVID-19 dashboard is no longer available; NE cumulative cases through 6/24/21
 Due to available data and changes made to dashboard, AL cumulative cases through 7/29/21
 * Source: US Census Bureau, State Population by Characteristics: 2010-2019,
<https://www.census.gov/data/tables/time-series/demo/popest/2010s-state-detail.html>

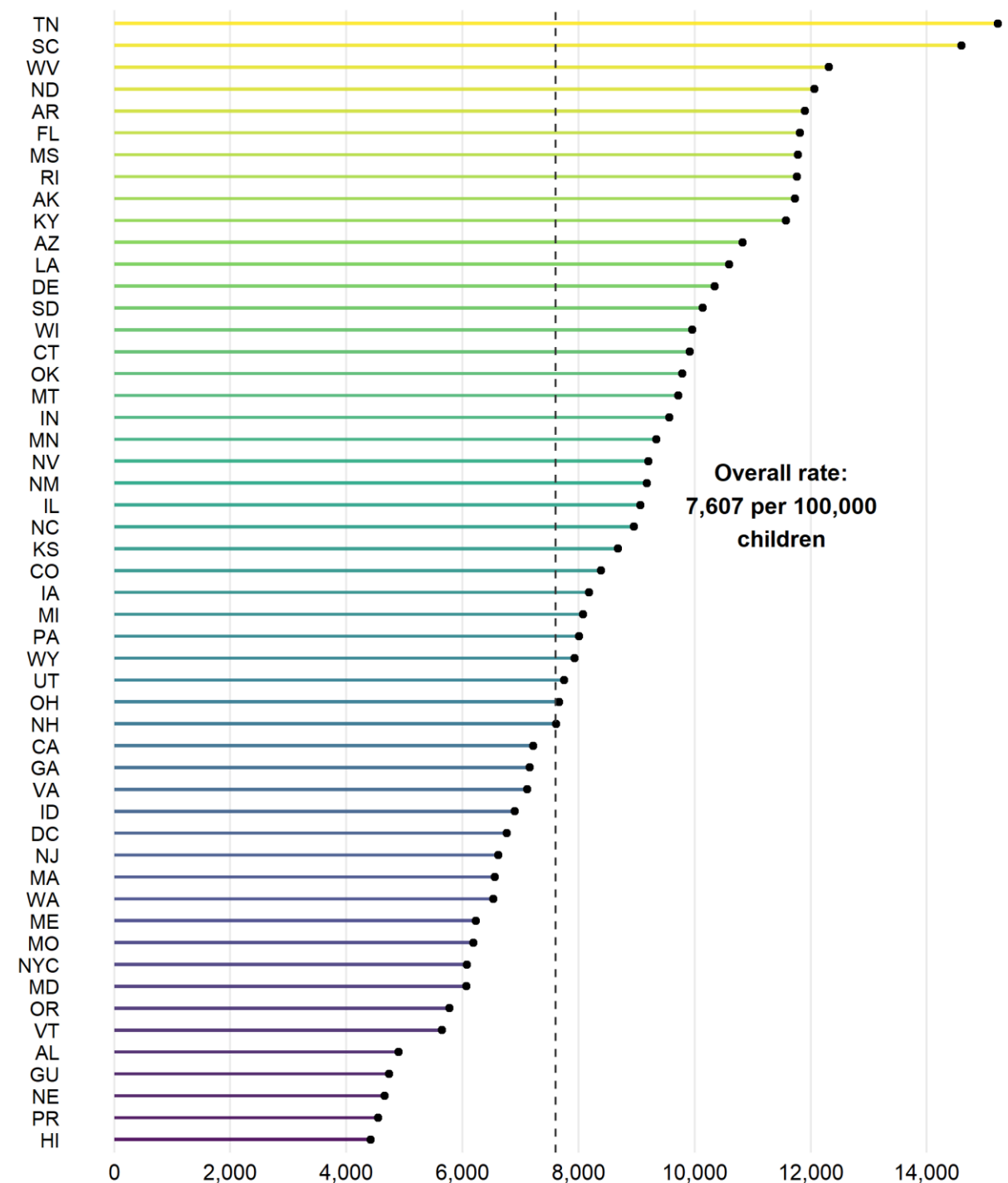
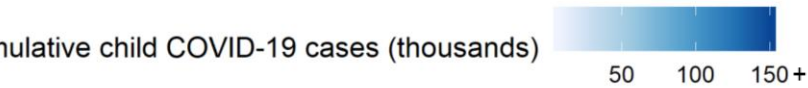
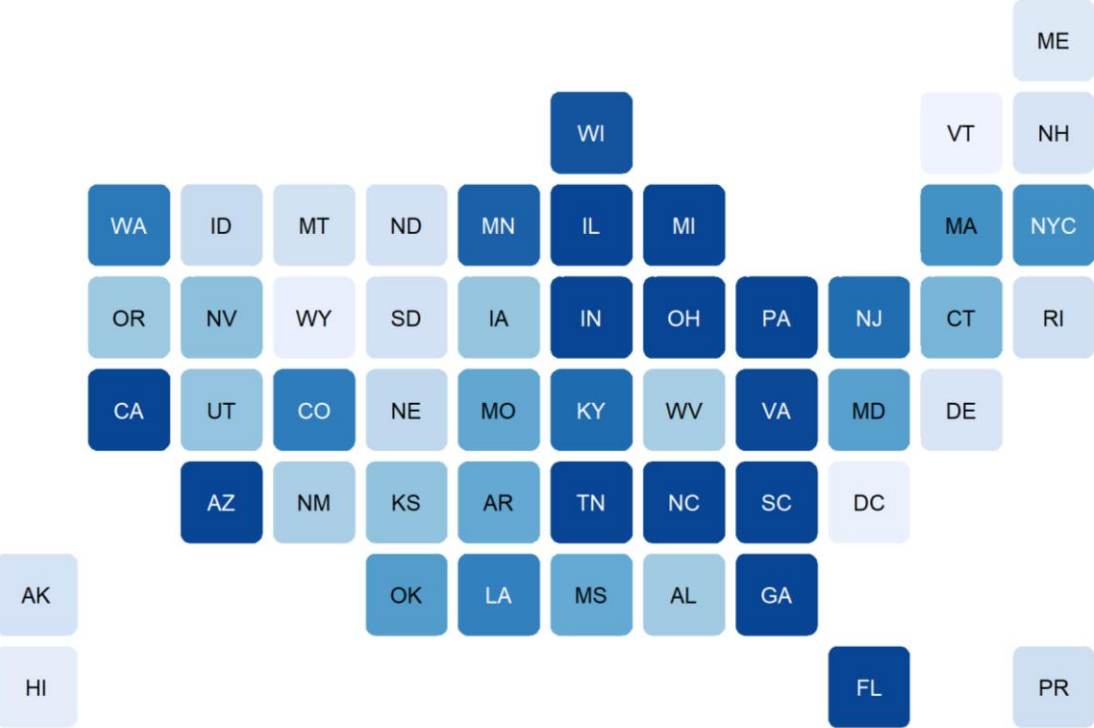


Fig 5. Cumulative Child COVID-19 Cases and Percent Increase in Child Cases

A. Cumulative Child COVID-19 Cases, 9/23/21

12 states with 150,000+ cumulative child cases



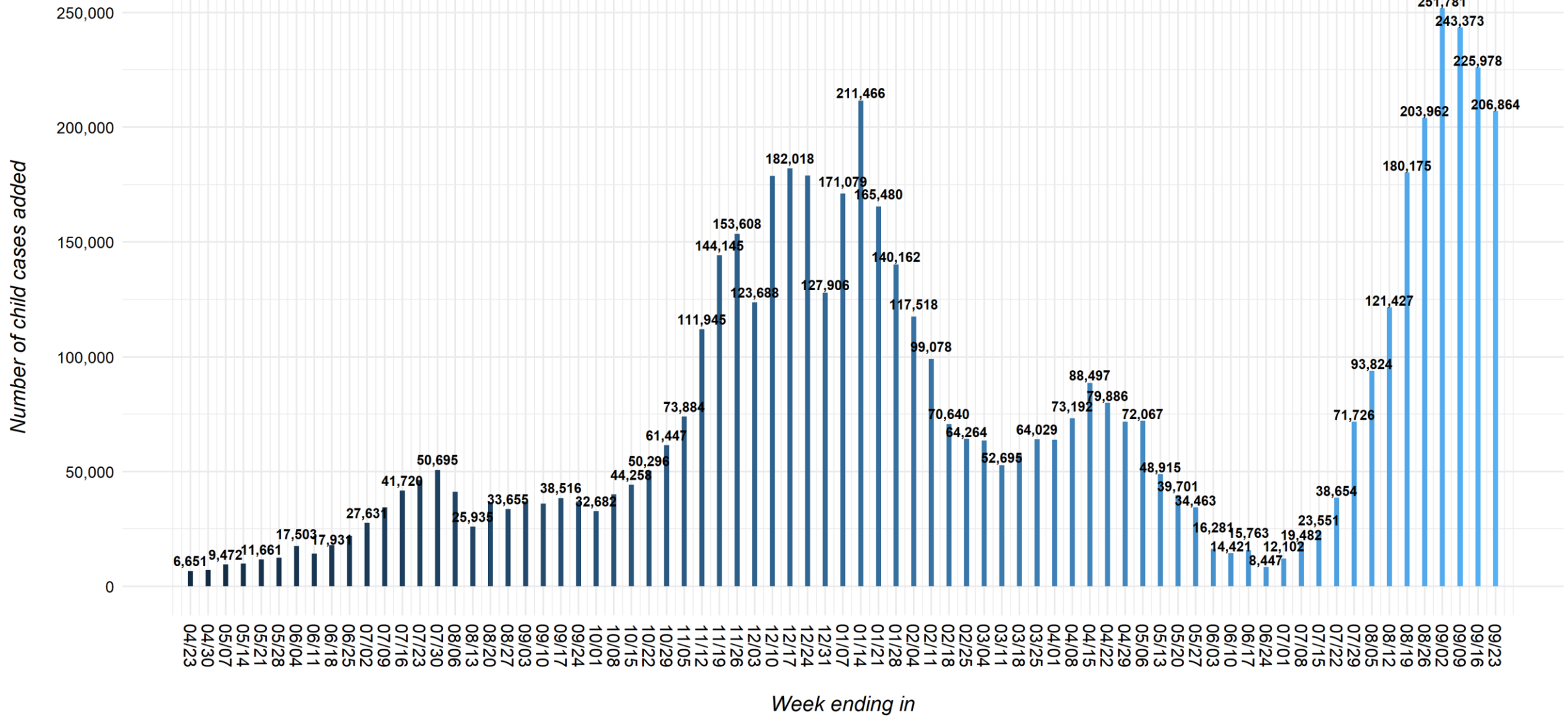
B. Percent Increase in Child Cases, 9/9/21-9/23/21

From 9/9-9/23, there were 432,843 child cases added (5,292,837 to 5,725,680; 8% increase)



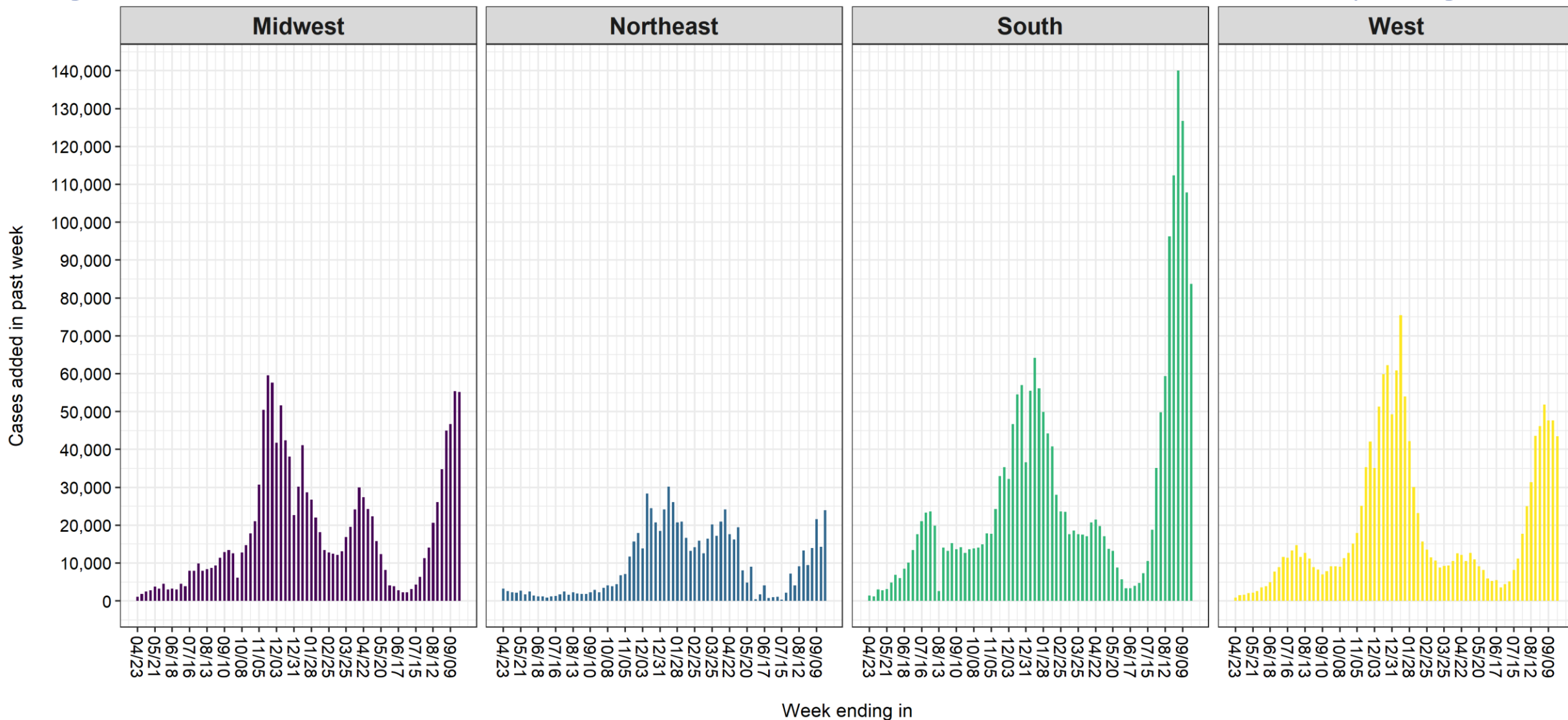
See detail in Appendix: Data from 48 states, NYC, DC, and PR (TX excluded from figures)
All data reported by state/local health departments are preliminary and subject to change; Analysis by American Academy of Pediatrics and Children's Hospital Association
As of 6/30/21, NE COVID-19 dashboard is no longer available; NE cumulative cases through 6/24/21
Due to available data and changes made to dashboard, AL cumulative cases through 7/29/21

Fig 6. United States: Number of Child COVID-19 Cases Added in Past Week*



* Note: 5 states changed their definition of child cases: AL as of 8/13/20, HI as of 8/27/20, RI as of 9/10/20, MO as of 10/1/20, WV as of 8/12/21
 TX reported age for only a small proportion of total cases each week (eg, 3-20%); TX cumulative cases through 8/26/21
 As of 6/30/21, NE COVID-19 dashboard is no longer available; NE cumulative cases through 6/24/21
 Due to available data and changes made to dashboard, AL cumulative cases through 7/29/21
 Due to available data and calculations required to obtain MA child cases, weekly estimates fluctuate
 See detail in Appendix: Data from 49 states, NYC, DC, PR and GU
 All data reported by state/local health departments are preliminary and subject to change; Analysis by American Academy of Pediatrics and Children's Hospital Association

Fig 7. United States: Child COVID-19 Cases Added in Past Week, by Region*



* Note: Regions are the US Census Regions

5 states changed their definition of child cases: AL as of 8/13/20, HI as of 8/27/20, RI as of 9/10/20, MO as of 10/1/20, WV as of 8/12/21;

TX reported age for only a small proportion of total cases each week (eg, 3-20%); TX cumulative cases through 8/26/21

As of 6/30/21, NE COVID-19 dashboard is no longer available; NE cumulative cases through 6/24/21

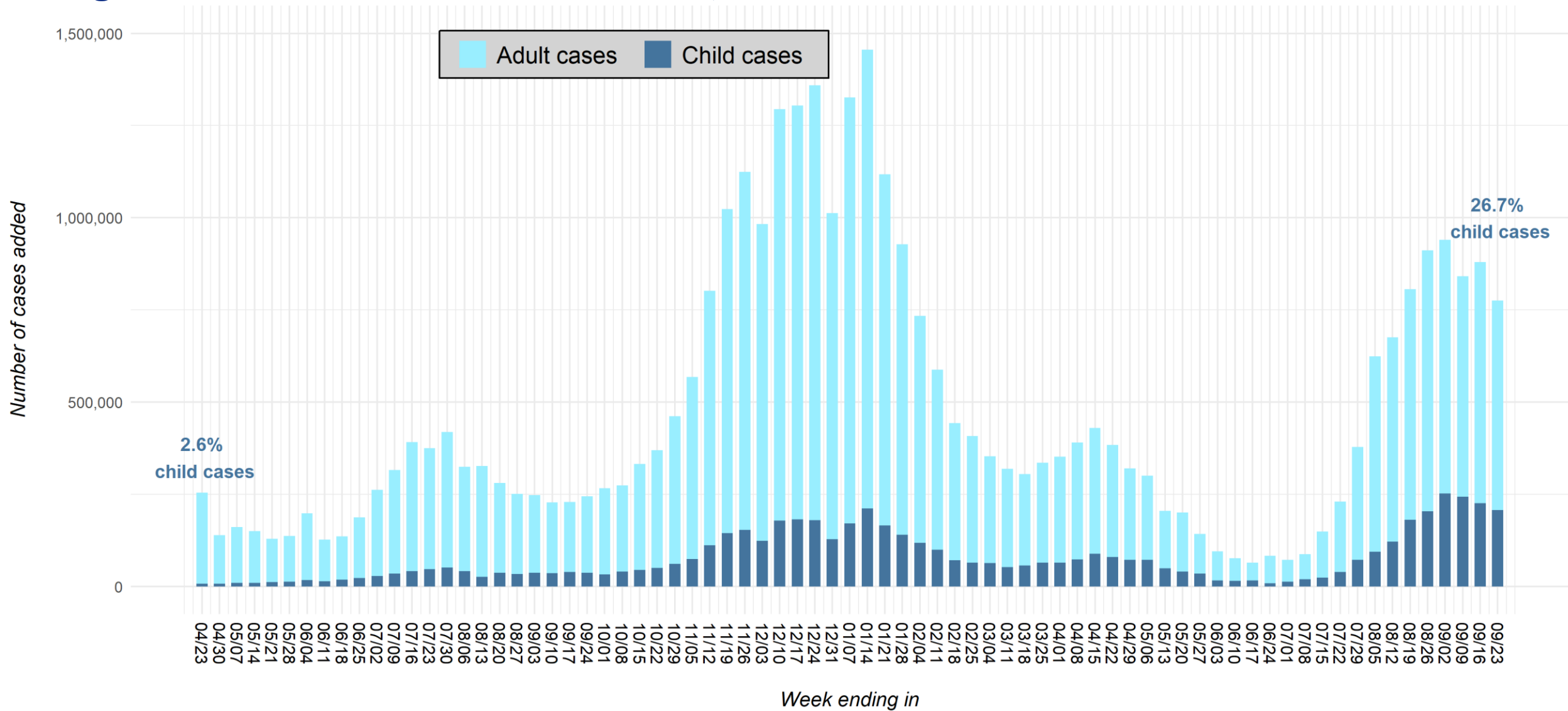
Due to available data and changes made to dashboard, AL cumulative cases through 7/29/21

Due to available data and calculations required to obtain MA child cases, weekly estimates fluctuate

See detail in Appendix: Data from 49 states, NYC, DC, PR and GU

All data reported by state/local health departments are preliminary and subject to change; Analysis by American Academy of Pediatrics and Children's Hospital Association

Fig 8. United States: Number of COVID-19 Cases Added in Past Week for Children and Adults*



* Note: 5 states changed their definition of child cases: AL as of 8/13/20, HI as of 8/27/20, RI as of 9/10/20, MO as of 10/1/20, WV as of 8/12/21;
TX reported age for only a small proportion of total cases each week (eg, 3-20%); TX cumulative cases through 8/26/21
As of 6/30/21, NE COVID-19 dashboard is no longer available; NE cumulative cases through 6/24/21
Due to available data and changes made to dashboard, AL cumulative cases through 7/29/21
Due to available data and calculations required to obtain MA child cases, weekly estimates fluctuate
See detail in Appendix: Data from 49 states, NYC, DC, PR and GU
All data reported by state/local health departments are preliminary and subject to change; Analysis by American Academy of Pediatrics and Children's Hospital Association

Appendix Table 1: Case Data Available on 9/23/21

Summary data across the 49 states, NYC, DC, PR, and GU that provided age distribution of reported COVID-19 cases*

Child population, 2019	Cumulative total cases (all ages)	Cumulative child cases	Cumulative percent children of total cases	Cases per 100,000 children
75,266,842	35,852,579	5,725,680	16.0%	7607.2

* Note: Data represent cumulative counts since states began reporting; All data reported by state/local health departments are preliminary and subject to change
As of 6/30/21, NE COVID-19 dashboard is no longer available; NE cumulative cases through 6/24/21
TX reported age for only a small proportion of total cases each week (eg, 3-20%); TX cumulative cases through 8/26/21
Due to available data and changes made to dashboard, AL cumulative cases through 7/29/21

Appendix Table 2A: Summary of Child Case Data from 4/16/20 – 9/23/21*

Date	Number of locations reporting age	Cumulative total cases (all ages)	Cumulative child cases^	Percent children of total cases	Cases per 100,000 children
9/23/21	49 states, NYC, DC, PR and GU	35,852,579	5,725,680	16.0%	7607.2
9/16/21	49 states, NYC, DC, PR and GU#	35,077,099	5,518,815	15.7%	7332.3
9/9/21	49 states, NYC, DC, PR and GU	34,198,122	5,292,837	15.5%	7032.1
9/2/21	49 states, NYC, DC, PR and GU	33,357,284	5,049,465	15.1%	6708.8
8/26/21	49 states, NYC, DC, PR and GU• #	32,417,814	4,797,683	14.8%	6374.2
8/19/21	49 states, NYC, DC, PR and GU	31,506,988	4,593,721	14.6%	6103.2
8/12/21	49 states, NYC, DC, PR and GU♦	30,700,985	4,413,547	14.4%	5863.9
8/5/21	49 states, NYC, DC, PR and GU# × #	30,025,995	4,292,120	14.3%	5702.5
7/29/21	49 states, NYC, DC, PR and GU	29,402,405	4,198,296	14.3%	5577.9
7/22/21	49 states, NYC, DC, PR and GU# •	29,023,908	4,126,570	14.2%	5482.6
7/15/21	49 states, NYC, DC, PR and GU# ±	28,793,845	4,087,916	14.2%	5431.2
7/8/21	49 states, NYC, DC, PR and GU	28,645,258	4,064,365	14.2%	5399.9
7/1/21	49 states, NYC, DC, PR and GU# Δ	28,557,884	4,044,884	14.2%	5374.1

* Note: Data represent cumulative counts since states began reporting; All data reported by state/local health departments are preliminary and subject to change

For several weeks in 2021 (6/3, 6/10, 6/24, 7/1, 7/15, 7/22, 8/5, 8/26, and 9/16), due to available data and calculations required to obtain child cases, there is a downward revision of cumulative child cases for MA; On 9/16/21 there were 184 fewer cumulative child cases

• As of 7/22/21, TX stopped updating demographic case data; As of 8/26/21, TX started updating demographic case data again and added 2,147 child cases; TX cumulative cases through 8/26/21

♦ As of 8/12/21, WV changed definition of child case from 0-19 to 0-20 years

× As of 8/5/21, due to available data and changes made to dashboard, AL cumulative cases through 7/29/21

≠ On 8/5/21, due to available data and changes made to dashboard, definition of LA total cumulative total cases changed

± On 7/15/21, IA revised case data, resulting in a downward revision of cumulative child cases

Δ As of 6/30/21, NE COVID-19 dashboard is no longer available; NE cumulative cases through 6/24/21

Appendix Table 2A, cont.: Summary of Child Case Data from 4/16/20 – 9/23/21*

Date	Number of locations reporting age	Cumulative total cases (all ages)	Cumulative child cases^	Percent children of total cases	Cases per 100,000 children
6/24/21	49 states, NYC, DC, PR and GU# †	28,486,004	4,032,782	14.2%	5358.0
6/17/21	49 states, NYC, DC, PR and GU	28,402,723	4,024,335	14.2%	5346.8
6/10/21	49 states, NYC, DC, PR and GU#	28,338,538	4,008,572	14.1%	5325.8
6/3/21	49 states, NYC, DC, PR and GU#	28,262,591	3,994,151	14.1%	5306.7
5/27/21	49 states, NYC, DC, PR and GU	28,167,723	3,977,870	14.1%	5285.0
5/20/21	49 states, NYC, DC, PR and GU~	28,025,875	3,943,407	14.1%	5239.2
5/13/21	49 states, NYC, DC, PR and GU	27,825,369	3,903,706	14.0%	5186.5
5/6/21	49 states, NYC, DC, PR and GU [○]	27,621,153	3,854,791	14.0%	5121.5
4/29/21	49 states, NYC, DC, PR and GU [○] ~	27,320,708	3,782,724	13.8%	5025.8
4/22/21	49 states, NYC, DC, PR and GU	27,001,107	3,711,075	13.7%	4930.6
4/15/21	49 states, NYC, DC, PR, and GU	26,617,913	3,631,189	13.6%	4824.4

* Note: Data represent cumulative counts since states began reporting; All data reported by state/local health departments are preliminary and subject to change

^ Unknown: number of children infected but not tested and confirmed

For several weeks in 2021 (6/3, 6/10, 6/24, 7/1, 7/15, 7/22, 8/5, and 8/26), due to available data and calculations required to obtain child cases, there is a downward revision of cumulative child cases for MA; On 8/26/21, MA reported 1,015 fewer cases

† On 6/24/21, due to available CO data and calculation required to obtain child total cases, there is a downward revision of cumulative child cases

~ On 4/29/21, and 5/20/21, WY revised case data, resulting in a downward revision of cumulative child cases

○ On 4/29/21, RI revised case data, resulting in a downward revision of cumulative cases; On 5/6/21, due to data revision and lag in reporting, RI experienced 30% increase in child cases (4,906 cases added)

Appendix Table 2A, cont.: Summary of Child Case Data from 4/16/20 – 9/23/21*

Date	Number of locations reporting age	Cumulative total cases (all ages)	Cumulative child cases^	Percent children of total cases	Cases per 100,000 children
4/8/21	49 states, NYC, DC, PR, and GU	26,188,186	3,542,692	13.5%	4706.8
4/1/21	49 states, NYC, DC, PR, and GU [○]	25,798,537	3,469,500	13.4%	4609.6
3/25/21	49 states, NYC, DC, PR, and GU	25,446,361	3,405,638	13.4%	4524.8
3/18/21	49 states, NYC, DC, PR, and GU	25,111,012	3,341,608	13.3%	4439.7
3/11/21	49 states, NYC, DC, PR, and GU ^{# □}	24,806,402	3,284,531	13.2%	4363.8
3/4/21	49 states, NYC, DC, PR, and GU	24,487,634	3,231,836	13.2%	4293.8
2/25/21	49 states, NYC, DC, PR, and GU	24,134,958	3,168,274	13.1%	4209.4
2/18/21	49 states, NYC, DC, PR, and GU ^{# ~}	23,726,925	3,104,010	13.1%	4124.0
2/11/21	49 states, NYC, DC, PR, and GU	23,284,471	3,033,370	13.0%	4030.2
2/4/21	49 states, NYC, DC, PR, and GU	22,697,315	2,934,292	12.9%	3898.5
1/28/21	49 states, NYC, DC, PR, and GU	21,963,445	2,816,775	12.8%	3742.4
1/21/21	49 states, NYC, DC, PR, and GU	21,036,194	2,676,612	12.7%	3556.2
1/14/21	49 states, NYC, DC, PR, and GU	19,918,714	2,511,132	12.6%	3336.3
1/7/21	49 states, NYC, DC, PR, and GU	18,463,319	2,299,666	12.5%	3055.4
12/31/20	49 states, NYC, DC, PR, and GU	17,137,295	2,128,587	12.4%	2828.1
12/24/20	49 states, NYC, DC, PR, and GU	16,125,324	2,000,681	12.4%	2658.1
12/17/20	49 states, NYC, DC, PR, and GU	14,766,831	1,821,746	12.3%	2420.4
12/10/20	49 states, NYC, DC, PR, and GU	13,462,337	1,639,728	12.2%	2178.6
12/3/20	49 states, NYC, DC, PR, and GU	12,167,620	1,460,905	12.0%	1941.0

* Note: Data represent cumulative counts since states began reporting; All data reported by state/local health departments are preliminary and subject to change

^ Unknown: number of children infected but not tested and confirmed

○ On 4/1/21, RI revised case data, resulting in a downward revision of cumulative cases; On 5/6/21, due to data revision and lag in reporting, RI experienced 30% increase in child cases (4,906 cases added)

On 2/18/21 and 3/11/21, due to available MA data and calculations required to obtain child total cases, there is a downward revision of cumulative child cases

□ On 3/11/21, due to only PR data available and calculation required to obtain child total cases, there is a downward revision of cumulative child cases

~ On 2/18/21, WY revised case data, resulting in a downward revision of cumulative child cases

Appendix Table 2A, cont.: Summary of Child Case Data from 4/16/20 – 9/23/21*

Date	Number of locations reporting age	Cumulative total cases (all ages)	Cumulative child cases^	Percent children of total cases	Cases per 100,000 children
11/26/20	49 states, NYC, DC, PR, and GU	11,184,900	1,337,217	12.0%	1776.6
11/19/20	49 states, NYC, DC, PR, and GU	10,060,749	1,183,609	11.8%	1572.6
11/12/20	49 states, NYC, DC, PR, and GU	9,037,991	1,039,464	11.5%	1381.0
11/5/20	49 states, NYC, DC, PR, and GU	8,236,710	927,518	11.3%	1232.3
10/29/20	49 states, NYC, DC, PR, and GU	7,669,038	853,635	11.1%	1134.1
10/22/20	49 states, NYC, DC, PR, and GU	7,207,186	792,188	11.0%	1052.5
10/15/20	49 states, NYC, DC, PR, and GU	6,837,527	741,891	10.9%	985.7
10/8/20	49 states, NYC, DC, PR, and GU	6,505,390	697,633	10.7%	926.9
10/1/20	49 states, NYC, DC, PR, and GU [#]	6,231,564	657,572	10.6%	873.7
9/24/20	49 states, NYC, DC, PR, and GU	5,965,268	624,890	10.5%	828.5
9/17/20	49 states, NYC, DC, PR, and GU	5,721,402	587,948	10.3%	779.5
9/10/20	49 states, NYC, DC, PR, and GU	5,493,006	549,432	10.0%	728.5
9/3/20	49 states, NYC, DC, PR, and GU	5,265,157	513,415	9.8%	680.3
8/27/20	49 states, NYC, DC, PR, and GU	5,018,113	476,439	9.5%	631.3
8/20/20	49 states, NYC, DC, PR, and GU	4,766,825	442,785	9.3%	583.2
8/13/20	49 states, NYC, DC, PR, and GU [~]	4,486,830	406,109	9.1%	538.1
8/6/20	49 states, NYC, DC, PR, and GU	4,159,947	380,174	9.1%	500.7

* Note: Data represent cumulative counts since states began reporting; All data reported by state/local health departments are preliminary and subject to change

^ Unknown: number of children infected but not tested and confirmed

As of 10/1/20, MO changed definition of child case from 0-19 to 0-17 years, resulting in a downward revision of cumulative child cases

~ As of 8/13/20, AL changed definition of child case from 0-24 to 0-17 years, resulting in a downward revision of cumulative child cases

Appendix Table 2A, cont.: Summary of Child Case Data from 4/16/20 – 9/23/21*

Date	Number of locations reporting age	Cumulative total cases (all ages)	Cumulative child cases^	Percent children of total cases	Cases per 100,000 children
7/30/20	49 states, NYC, DC, PR, and GU	3,835,573	338,982	8.8%	446.5
7/23/20	49 states, NYC, DC, PR, and GU	3,416,630	288,287	8.4%	379.7
7/16/20	49 states, NYC, DC, PR, and GU	3,042,413	241,904	8.0%	318.6
7/9/20	49 states, NYC, DC, PR, and GU	2,651,066	200,184	7.6%	263.7
7/2/20	49 states, NYC, DC, PR, and GU	2,335,060	165,845	7.1%	218.4
6/25/20	49 states, NYC, DC, PR, and GU	2,073,387	138,213	6.7%	182.0
6/18/20	49 states, NYC, DC, PR, and GU	1,885,905	116,176	6.2%	153.0
6/11/20	49 states, NYC, DC, PR, and GU	1,750,240	98,246	5.6%	129.4
6/4/20	49 states, NYC, DC, PR, and GU	1,623,334	84,016	5.2%	110.7
5/28/20	47 states, NYC, DC, PR, and GU	1,425,154	66,513	4.7%	91.5
5/21/20	47 states, NYC, DC, PR, and GU	1,288,305	54,031	4.2%	74.4
5/14/20	47 states, NYC, DC, PR, and GU	1,159,407	42,370	3.7%	58.3
5/7/20	46 states, NYC, DC, PR, and GU	1,010,112	32,568	3.2%	45.0
4/30/20	47 states, NYC, DC, and PR	849,615	23,096	2.7%	31.8
4/23/20	48 states, NYC, DC, PR, and GU	710,953	15,911	2.2%	21.2
4/16/20	46 states, NYC, and DC	456,923	9,259	2.0%	13.3

* Note: Data represent cumulative counts since states began reporting; All data reported by state/local health departments are preliminary and subject to change

^ Unknown: number of children infected but not tested and confirmed

Appendix Table 2B: Summary of Child Hospitalization Data from 5/21/20 –9/23/21*

Date	Number of locations reporting age distribution of hospitalizations	Cumulative total hospitalizations (all ages)	Cumulative child hospitalizations	Percent children of total hospitalizations	Hospitalization rate^
9/23/21	24 states and NYC ^x	882,073	21,814	2.5%	0.9%
9/16/21	24 states and NYC [▲]	866,215	21,081	2.4%	0.9%
9/9/21	24 states and NYC [♦] ◊	849,324	20,436	2.4%	0.9%
9/2/21	24 states and NYC [♦]	833,528	19,940	2.4%	0.9%
8/26/21	24 states and NYC ^x • ≠ ▲	812,130	19,082	2.3%	0.9%
8/19/21	23 states and NYC [○]	784,760	18,315	2.3%	0.9%
8/12/21	23 states and NYC	773,236	17,865	2.3%	0.9%
8/5/21	23 states and NYC	763,149	17,413	2.3%	0.9%
7/29/21	23 states and NYC [□] Δ	753,956	17,059	2.3%	0.9%
7/22/21	23 states and NYC [○] Δ	747,858	16,878	2.3%	0.9%
7/15/21	23 states and NYC [○] Δ	743,863	16,756	2.3%	0.9%
7/8/21	23 states and NYC [○] ±	740,371	16,623	2.2%	0.9%

* Note: Data represent cumulative counts since states began reporting; All data reported by state/local health departments are preliminary and subject to change
For additional information on US child hospitalizations from the CDC, visit <https://covid.cdc.gov/covid-data-tracker/#new-hospital-admissions>

^ Hospitalization rate = number of child hospitalizations / number of child cases

× On 8/26/21 and 9/24/21, CO revised hospitalization data, resulting in a downward revision of cumulative child hospitalizations

▲ As of 8/26/21, NM began reporting hospitalization data by age; On 9/16/21, NM revised hospitalization data resulting in a downward revisions of child hospitalizations and cumulative hospitalizations for all ages

♦ On 9/2/21, due to available data, WA cumulative child hospitalizations increased by 22%; On 9/9/21, WA revised hospitalization data, resulting in a downward revision of cumulative child hospitalizations

◊ On 9/9/21, SC revised hospitalization data, resulting in a downward revision of cumulative child hospitalizations

• On 8/26/21, NH revised hospitalization data, resulting in a downward revision of cumulative child hospitalizations

≠ On 8/26/21, NJ revised hospitalization data, resulting in a downward revision of cumulative child hospitalizations and cumulative hospitalizations for all ages

○ On 7/1/21, 7/8/21, 7/15/21, 7/22/21, and 8/19/21, SD revised hospitalization data, resulting in a downward revision of cumulative child hospitalizations and cumulative hospitalizations for all ages

□ On 7/29/21, RI revised hospitalization data, resulting in a downward revision of cumulative child hospitalizations

Δ On 7/15/21, 7/22/21 and 7/29/21, AZ revised data resulting in a downward revision of cumulative child hospitalizations

± On 7/8/21, GA revised hospitalization data, resulting in a downward revision of cumulative child hospitalizations

Appendix Table 2B, cont.: Summary of Child Hospitalization Data from 5/21/20 –9/23/21*

Date	Number of locations reporting age distribution of hospitalizations	Cumulative total hospitalizations (all ages)	Cumulative child hospitalizations	Percent children of total hospitalizations	Hospitalization rate^
7/1/21	23 states and NYC ~ ○ Δ	737,706	16,520	2.2%	0.9%
6/24/21	23 states and NYC ○ #	728,647	15,783	2.2%	0.9%
6/17/21	23 states and NYC ○ □ †	819,143	16,997	2.1%	0.9%
6/10/21	24 states and NYC ○	817,386	16,958	2.1%	0.9%
6/3/21	24 states and NYC ○	813,351	16,822	2.1%	0.8%
5/27/21	24 states and NYC	800,302	16,525	2.1%	0.8%
5/20/21	24 states and NYC	793,175	16,261	2.1%	0.8%
5/13/21	24 states and NYC	786,279	16,013	2.0%	0.8%
5/6/21	24 states and NYC	778,080	15,740	2.0%	0.8%
4/29/21	24 states and NYC	768,506	15,456	2.0%	0.8%
4/22/21	24 states and NYC	759,280	15,187	2.0%	0.8%
4/15/21	24 states and NYC ~	749,202	14,849	2.0%	0.8%

* Note: Data represent cumulative counts since states began reporting; All data reported by state/local health departments are preliminary and subject to change

^ Hospitalization rate = number of child hospitalizations / number of child cases

~ On 4/15/21, NE revised hospitalization data, resulting in a downward revision of cumulative hospitalizations for all ages; As of 6/30/21, NE COVID-19 dashboard is no longer available; NE cumulative hospitalizations through 6/24/21

○ On 6/3/21, 6/10/21, 6/17/21, 6/24/21, 7/1/21, 7/8/21, 7/15/21, 7/22/21, and 8/19/21, SD revised hospitalization data, resulting in a downward revision of cumulative child hospitalizations and cumulative hospitalizations for all ages

Δ On 7/1/21, AZ revised data resulting in a 33% increase in cumulative child hospitalizations (592 hospitalizations added);

On 6/24/21, FL stopped reporting hospitalization data, resulting in a downward revision of cumulative child hospitalizations and cumulative hospitalizations for all ages

□ On 6/17/21, RI revised hospitalization data, resulting in a downward revision of cumulative child hospitalizations and a downward revision of cumulative hospitalizations for all ages

† On 6/17/21, VA revised hospitalization data resulting in a downward revision of cumulative child hospitalizations

Appendix Table 2B, cont.: Summary of Child Hospitalization Data from 5/21/20 – 9/23/21*

Date~	Number of locations reporting age distribution of hospitalizations	Cumulative total hospitalizations (all ages)	Cumulative child hospitalizations	Percent children of total hospitalizations	Hospitalization rate^
4/8/21	24 states and NYC	738,793	14,489	2.0%	0.8%
4/1/21	24 states and NYC	722,365	14,179	2.0%	0.8%
3/25/21	24 states and NYC	713,236	13,953	2.0%	0.8%
3/18/21	24 states and NYC	699,071	13,540	1.9%	0.8%
3/11/21	24 states and NYC	690,206	13,283	1.9%	0.8%
3/4/21	23 states and NYC#	656,757	12,531	1.9%	0.8%
2/25/21	24 states and NYC	665,821	12,630	1.9%	0.8%
2/18/21	24 states and NYC	652,528	12,329	1.9%	0.8%
2/11/21	24 states and NYC	639,318	11,960	1.9%	0.8%
2/4/21	24 states and NYC	623,006	11,585	1.9%	0.8%
1/28/21	24 states and NYC	605,509	11,192	1.8%	0.8%
1/21/21	24 states and NYC	581,897	10,660	1.8%	0.8%
1/14/21	24 states and NYC	560,125	10,182	1.8%	0.8%
1/7/21	24 states and NYC	533,910	9,661	1.8%	0.9%
12/31/20	24 states and NYC	510,384	9,259	1.8%	0.9%
12/17/20	24 states and NYC	468,643	8,411	1.8%	0.9%
12/10/20	24 states and NYC	445,394	7,913	1.8%	0.9%
12/3/20	24 states and NYC	421,766	7,515	1.8%	1.0%
11/19/20	24 states and NYC	381,141	6,716	1.8%	1.1%

* Note: Data represent cumulative counts since states began reporting; All data reported by state/local health departments are preliminary and subject to change
~ Data from weeks ending 11/26/20 and 12/24/20 are not included

^ Hospitalization rate = number of child hospitalizations / number of child cases

On 3/4/21, SC not included due to incomplete data, resulting in a downward revision of cumulative hospitalizations for all ages

Appendix Table 2B, cont.: Summary of Child Hospitalization Data from 5/21/20 – 9/23/21*

Date	Number of locations reporting age distribution of hospitalizations	Cumulative total hospitalizations (all ages)	Cumulative child hospitalizations	Percent children of total hospitalizations	Hospitalization rate^
11/12/20	23 states and NYC	362,453	6,337	1.7%	1.2%
11/5/20	24 states and NYC	360,724	6,172	1.7%	1.3%
10/29/20	24 states and NYC	348,296	5,899	1.7%	1.3%
10/22/20	24 states and NYC	324,720	5,585	1.7%	1.3%
10/15/20	24 states and NYC	314,715	5,353	1.7%	1.4%
10/8/20	25 states and NYC#	307,135	5,211	1.7%	1.4%
10/1/20	25 states and NYC	302,896	5,340	1.8%	1.6%
9/24/20	25 states and NYC	294,901	5,164	1.8%	1.7%
9/17/20	25 states and NYC	288,345	5,016	1.7%	1.6%
9/10/20	24 states and NYC	270,034	4,677	1.7%	1.8%
9/3/20	23 states and NYC	257,300	4,321	1.7%	1.9%
8/27/20	22 states and NYC	243,056	4,163	1.7%	2.1%
8/20/20	21 states and NYC	234,810	4,062	1.7%	2.2%

* Note: Data represent cumulative counts since states began reporting; All data reported by state/local health departments are preliminary and subject to change

^ Hospitalization rate = number of child hospitalizations / number of child cases

On 10/8/20, AZ revised hospitalization data, resulting in a downward revision of cumulative child hospitalizations

Appendix Table 2B, cont.: Summary of Child Hospitalization Data from 5/21/20 – 9/23/21*

Date	Number of locations reporting age distribution of hospitalizations	Cumulative total hospitalizations (all ages)	Cumulative child hospitalizations	Percent children of total hospitalizations	Hospitalization rate^
8/13/20	21 states and NYC	225,893	3,849	1.7%	2.2%
8/6/20	20 states and NYC	206,189	3,276	1.6%	2.2%
7/30/20	20 states and NYC	195,106	2,669	1.4%	2.0%
7/23/20	20 states and NYC	181,345	2,304	1.3%	2.0%
7/16/20	20 states and NYC	172,787	2,074	1.2%	2.1%
7/9/20	20 states and NYC	164,158	1,948	1.2%	2.4%
7/2/20	20 states and NYC	156,640	1,780	1.1%	2.6%
6/25/20	20 states and NYC	151,583	1,663	1.1%	2.9%
6/18/20	19 states and NYC	140,215	1,433	1.0%	3.2%
6/11/20	19 states and NYC	134,600	1,322	1.0%	3.4%
6/4/20	19 states and NYC	128,779	1,231	1.0%	3.4%
5/28/20	16 states and NYC	114,678	1,054	0.9%	3.8%
5/21/20	17 states and NYC	105,665	891	0.8%	3.8%

* Note: Data represent cumulative counts since states began reporting; All data reported by state/local health departments are preliminary and subject to change

^ Hospitalization rate = number of child hospitalizations / number of child cases

Appendix Table 2C: Summary of Child Mortality Data from 5/21/20 – 9/23/21*

Date	Number of locations reporting age distribution of deaths	Cumulative total deaths (all ages)	Cumulative child deaths	Percent children of total deaths	Percent of child cases resulting in death^
9/23/21	45 states, NYC, PR and GU	611,477	498	0.08%	0.01%
9/16/21	45 states, NYC, PR and GU	598,85	480	0.08%	0.01%
9/9/21	45 states, NYC, PR and GU	586,537	460	0.08%	0.01%
9/2/21	45 states, NYC, PR and GU	576,583	444	0.08%	0.01%
8/26/21	45 states, NYC, PR and GU [▲] ≠	567,949	425	0.07%	0.01%
8/19/21	44 states, NYC, PR and GU [×] ≠	556,231	402	0.07%	0.01%
8/12/21	43 states, NYC, PR and GU ^Δ	540,918	378	0.07%	0.01%
8/5/21	43 states, NYC, PR and GU [#] ~	537,846	371	0.07%	0.01%
7/29/21	43 states, NYC, PR and GU	528,896	358	0.07%	0.01%
7/22/21	43 states, NYC, PR and GU	527,019	349	0.07%	0.01%
7/15/21	43 states, NYC, PR and GU	525,470	346	0.07%	0.01%
7/8/21	43 states, NYC, PR and GU	523,848	344	0.07%	0.01%
7/1/21	43 states, NYC, PR and GU [○] ~	522,380	335	0.06%	0.01%

* Note: Data represent cumulative counts since states began reporting; All data reported by state/local health departments are preliminary and subject to change; For additional information on US child mortality from the CDC, visit <https://covid.cdc.gov/covid-data-tracker/#demographics>

^ Number of child deaths / number of child cases

▲ As of 8/26/21, NM began reporting mortality data by age

≠ On 8/19/21 and 8/26/21, cumulative total deaths for all ages adjusted due to different available mortality measure for CO

× As of 8/19/21, SC began reporting mortality data by age

Δ On 8/12/21, CA revised mortality data resulting in a downward revision of cumulative deaths for all ages

On 8/5/21, due to available data and changes made to dashboard, definition of LA total cumulative deaths changed

~ On 7/1/21, AL revised mortality data, resulting in a downward revision of cumulative child deaths; As of 8/5/21, due to available data and changes made to dashboard, AL cumulative deaths through 7/29/21
○ On 5/20/21, NE revised mortality data, resulting in a downward revision of cumulative deaths for all ages; As of 6/30/21, NE COVID-19 dashboard is no longer available; NE cumulative deaths through 6/24/21

Appendix Table 2C, cont.: Summary of Child Mortality Data from 5/21/20 – 9/23/21*

Date	Number of locations reporting age distribution of deaths	Cumulative total deaths (all ages)	Cumulative child deaths	Percent children of total deaths	Percent of child cases resulting in death^
6/24/21	43 states, NYC, PR and GU	520,660	336	0.06%	0.01%
6/17/21	42 states, NYC, PR and GU	518,016	335	0.06%	0.01%
6/10/21	43 states, NYC, PR and GU [□]	516,663	330	0.06%	0.01%
6/3/21	43 states, NYC, PR and GU	514,325	327	0.06%	0.01%
5/27/21	43 states, NYC, PR and GU	511,346	322	0.06%	0.01%
5/20/21	43 states, NYC, PR and GU [○]	507,373	316	0.06%	0.01%
5/13/21	43 states, NYC, PR and GU	503,900	308	0.06%	0.01%
5/6/21	43 states, NYC, PR and GU	500,262	306	0.06%	0.01%
4/29/21	43 states, NYC, PR and GU	496,248	303	0.06%	0.01%
4/22/21	43 states, NYC, PR and GU	492,057	296	0.06%	0.01%
4/15/21	43 states, NYC, PR and GU	487,881	297	0.06%	0.01%

* Note: Data represent cumulative counts since states began reporting; All data reported by state/local health departments are preliminary and subject to change;

□ On 6/10/21, WA revised mortality data, resulting in a downward revision of cumulative deaths for all ages

○ On 5/20/21, NE revised mortality data, resulting in a downward revision of cumulative deaths for all ages; As of 6/30/21, NE COVID-19 dashboard is no longer available

Appendix Table 2C, cont.: Summary of Child Mortality Data from 5/21/20 – 9/23/21*

Date	Number of locations reporting age distribution of deaths	Cumulative total deaths (all ages)	Cumulative child deaths	Percent children of total deaths	Percent of child cases resulting in death^
4/8/21	43 states, NYC, PR and GU	483,378	292	0.06%	0.01%
4/1/21	43 states, NYC, PR and GU	476,994	284	0.06%	0.01%
3/25/21	43 states, NYC, PR and GU [○]	471,104	279	0.06%	0.01%
3/18/21	43 states, NYC, PR and GU [□]	464,201	268	0.06%	0.01%
3/11/21	43 states, NYC, PR and GU	457,061	266	0.06%	0.01%
3/4/21	43 states, NYC, and GU [#]	444,878	253	0.06%	0.01%
2/25/21	43 states, NYC, and GU	438,657	256	0.06%	0.01%
2/18/21	43 states, NYC, and GU	425,350	247	0.06%	0.01%
2/11/21	43 states, NYC, and GU	407,222	241	0.06%	0.01%
2/4/21	43 states, NYC, and GU	388,204	227	0.06%	0.01%
1/28/21	43 states, NYC, and GU	369,149	215	0.06%	0.01%
1/21/21	43 states, NYC, and GU	348,860	205	0.06%	0.01%
1/14/21	43 states and NYC	330,261	191	0.06%	0.01%
1/7/21	42 states and NYC	297,914	188	0.06%	0.01%

* Note: Data represent cumulative counts since states began reporting; All data reported by state/local health departments are preliminary and subject to change

^ Number of child deaths / number of child cases

○ On 3/25/21, VA revised mortality data, resulting in a downward revision of cumulative deaths for all ages

□ On 3/18/21, KS revised mortality data, resulting in a downward revision of cumulative deaths for all ages

On 3/4/21, OH revised mortality data, resulting in a downward revision of cumulative deaths for all ages

Appendix Table 2C, cont.: Summary of Child Mortality Data from 5/21/20 – 9/23/21*

Date~	Number of locations reporting age distribution of deaths	Cumulative total deaths (all ages)	Cumulative child deaths	Percent children of total deaths	Percent of child cases resulting in death^
12/31/20	43 states and NYC	294,443	179	0.06%	0.01%
12/17/20	42 states and NYC	263,833	172	0.07%	0.01%
12/10/20	42 states and NYC	249,442	162	0.06%	0.01%
12/3/20	43 states and NYC	236,996	154	0.06%	0.01%
11/19/20	43 states and NYC	218,007	138	0.06%	0.01%
11/12/20	42 states and NYC	210,441	133	0.06%	0.01%
11/5/20	42 states and NYC	199,564	123	0.06%	0.01%
10/29/20	42 states and NYC	194,175	121	0.06%	0.02%
10/22/20	42 states and NYC	189,250	120	0.06%	0.02%
10/15/20	42 states and NYC	184,294	120	0.07%	0.02%
10/8/20	42 states and NYC	180,014	115	0.06%	0.02%
10/1/20	42 states and NYC	175,423	112	0.06%	0.02%
9/24/20	42 states and NYC	170,971	109	0.06%	0.02%
9/17/20	42 states and NYC	167,019	109	0.07%	0.02%
9/10/20	42 states and NYC	160,856	105	0.07%	0.02%
9/3/20	42 states and NYC	156,053	103	0.07%	0.02%

* Note: Data represent cumulative counts since states began reporting; All data reported by state/local health departments are preliminary and subject to change

~ Data from weeks ending 11/26/20 and 12/24/20 are not included

^ Number of child deaths / number of child cases

Appendix Table 2C, cont.: Summary of Child Mortality Data from 5/21/20 – 9/23/21*

Date	Number of locations reporting age distribution of deaths	Cumulative total deaths (all ages)	Cumulative child deaths	Percent children of total deaths	Percent of child cases resulting in death^
8/27/20	43 states and NYC [#]	152,884	101	0.07%	0.02%
8/20/20	45 states and NYC	154,279	92	0.06%	0.02%
8/13/20	45 states and NYC	147,356	90	0.06%	0.02%
8/6/20	44 states and NYC	139,685	90	0.06%	0.02%
7/30/20	44 states and NYC	133,267	86	0.06%	0.03%
7/23/20	44 states and NYC	121,539	76	0.06%	0.03%
7/16/20	43 states and NYC	119,265	66	0.06%	0.03%
7/9/20	42 states and NYC	112,289	62	0.06%	0.03%
7/2/20	42 states and NYC	108,513	58	0.05%	0.04%
6/25/20	42 states and NYC	104,683	57	0.05%	0.04%
6/18/20	42 states and NYC	101,056	54	0.05%	0.05%
6/11/20	40 states and NYC	89,866	48	0.05%	0.05%
6/4/20	40 states and NYC	91,241	46	0.05%	0.06%
5/28/20	39 states and NYC	82,298	30	0.04%	0.05%
5/21/20	38 states and NYC	71,689	28	0.04%	0.06%

* Note: Data represent cumulative counts since states began reporting; All data reported by state/local health departments are preliminary and subject to change

^ Number of child deaths / number of child cases

As of 8/27/20, RI, MI, and SC not reporting age distributions of COVID-19 deaths (exact numbers not provided for <5 deaths); mortality data from those states excluded

Appendix Table 3A: Child COVID-19 Case Data Available on 9/23/21*

Click location name to view original data source

Location	Age range	Child population, 2019	Cumulative child cases	Percent children of total cases	Cumulative total cases (all ages)	Cases per 100,000 children
Alabama[^]	0-17	1,088,668	53,350	12.1%	442,373	4900.5
Alaska	0-19	196,852	23,087	23.1%	100,111	11728.1
Arizona	0-19	1,838,598	199,111	18.6%	1,072,863	10829.5
Arkansas	0-17	700,155	83,305	17.1%	488,316	11898.1
California	0-17	8,894,641	641,897	14.5%	4,441,390	7216.7
Colorado[○]	0-19	1,407,971	118,102	18.0%	656,850	8388.1
Connecticut	0-19	735,193	72,879	18.8%	387,263	9912.9
Delaware	0-17	203,572	21,071	16.3%	129,231	10350.6
District of Columbia	0-19	149,337	10,096	16.9%	59,849	6760.5
Florida	0-14	3,512,139	414,887	11.9%	3,485,163	11812.9
Georgia	0-17	2,503,881	179,182	14.9%	1,200,327	7156.2
Guam	0-19	57,727	2,733	20.5%	13,349	4734.4
Hawaii	0-17	299,868	13,262	17.9%	74,119	4422.6
Idaho	0-17	448,201	30,925	12.5%	246,749	6899.8
Illinois	0-19	3,145,309	285,243	17.8%	1,605,320	9068.8
Indiana	0-19	1,755,070	167,875	17.8%	944,708	9565.1
Iowa[□]	0-17	726,841	59,445	12.5%	476,342	8178.5
Kansas	0-17	700,250	60,790	15.1%	401,931	8681.2
Kentucky	0-19	1,118,934	129,476	19.4%	665,994	11571.4
Louisiana[×]	0-17	1,087,630	115,283	15.7%	733,522	10599.5
Maine	0-19	281,158	17,511	20.4%	85,872	6228.2
Maryland	0-19	1,489,721	90,351	17.3%	523,760	6065.0
Massachusetts[#]	0-19	1,558,231	102,139	13.8%	738,303	6554.8
Michigan	0-19	2,407,690	194,523	17.3%	1,125,564	8079.2
Minnesota	0-19	1,445,346	134,996	19.4%	694,320	9340.0
Mississippi	0-17	698,583	82,319	17.1%	481,397	11783.7
Missouri[†]	0-17	1,370,585	84,817	12.7%	667,829	6188.4

* Note: Data represent cumulative counts since states began reporting; All data reported by state/local health departments are preliminary and subject to change

[^] As of 8/13/20, AL changed definition of child case from 0-24 to 0-17 years; As of 8/5/21, due to available data and changes made to dashboard, AL cumulative cases through 7/29/21

[○] On 6/24/21, due to available CO data and calculation required to obtain child total, there is a downward revision of cumulative child cases

[□] On 7/15/21, IA revised case data, resulting in a downward revision of cumulative child cases

[×] On 8/5/21, due to available data and changes made to dashboard, definition of LA total cumulative cases changed

[#] As of 9/3/20, MA changed reporting from total child cases to cases added in last two weeks; 9/23/21 totals calculated using MA Dept. of Public Health COVID-19 Dashboard published 9/23/21 (data from 9/5/21-9/18/28) and 9/2/21 version of this report;

For several weeks in 2021 (2/18, 3/11, 6/3, 6/10, 6/24, 7/1, 7/15, 7/22, 8/5, 8/26, and 9/16), due to available data and calculations required to obtain child cases, there is a downward revision of cumulative child cases for MA; On 9/16/21 there were 184 fewer cumulative child cases

[†] As of 10/1/20, MO changed definition of child case from 0-19 to 0-17 years

Appendix Table 3B: Child COVID-19 Case Data Available on 9/23/21*



Click location name to view original data source

Location	Age range	Child population, 2019	Cumulative child cases	Percent children of total cases	Cumulative total cases (all ages)	Cases per 100,000 children
Montana	0-19	254,416	24,725	17.1%	145,000	9718.3
Nebraska [~]	0-19	760,272	35,425	15.8%	224,206	4659.5
Nevada	0-19	688,997	63,399	15.3%	414,371	9201.6
New Hampshire	0-19	291,038	22,156	19.1%	115,957	7612.8
New Jersey	0-17	1,938,578	128,349	13.0%	990,671	6620.8
New Mexico	0-19	531,712	48,782	19.7%	247,353	9174.5
North Carolina	0-17	2,300,715	206,059	15.1%	1,362,938	8956.3
North Dakota	0-19	200,777	24,231	18.9%	127,912	12068.6
NYC	0-17	1,726,900	105,018	11.9%	879,425	6081.3
Ohio	0-19	2,886,873	221,232	16.1%	1,373,275	7663.4
Oklahoma	0-17	952,238	93,205	15.6%	598,072	9788.0
Oregon	0-19	965,480	55,804	17.6%	317,107	5779.9
Pennsylvania	0-19	2,801,187	224,358	16.1%	1,397,755	8009.4
Puerto Rico [□]	0-19	594,011	27,011	15.0%	179,750	4547.2
Rhode Island [○]	0-18	220,525	25,939	16.3%	158,832	11762.4
South Carolina	0-20	1,314,988	191,920	22.9%	838,079	14594.8
South Dakota	0-19	240,567	24,396	17.1%	142,330	10141.0
Tennessee	0-20	1,762,659	268,378	22.4%	1,199,956	15225.7
Texas [^]	0-19	8,210,585	7,754	7.8%	99,989	--
Utah	0-14	774,764	60,085	12.0%	499,026	7755.3
Vermont	0-19	134,415	7,593	23.5%	32,368	5648.9
Virginia	0-19	2,087,426	148,582	17.5%	846,979	7118.0
Washington	0-19	1,840,306	120,190	19.1%	628,441	6531.0
West Virginia ^Δ	0-20	402,473	49,575	21.7%	228,983	12317.6
Wisconsin	0-19	1,422,095	141,698	17.9%	790,569	9964.0
Wyoming [#]	0-18	140,694	11,162	15.9%	70,420	7933.5

* Note: Data represent cumulative counts since states began reporting; All data reported by state/local health departments are preliminary and subject to change

~ As of 6/30/21, NE COVID-19 dashboard is no longer available; NE cumulative cases through 6/24/21

□ On 3/11/21, due to only PR data available and calculation required to obtain child total, there is a downward revision of cumulative child cases

○ On 4/1/21 and 4/29/21, RI revised case data, resulting in downward revision of cumulative cases; On 5/6/21, due to data revision and lag in reporting, RI experienced 30% increase in child cases (4,906 cases added)

^ Texas reported age for only 3% of total confirmed cases; Cases per 100,000 children omitted for Texas; Data for Texas in this report is limited to the case count for which age is provided;

on 8/26/21, after not updating demographic case data since 7/22/21, TX added 2,147 child cases

Δ As of 8/19/21, WV changed definition of child case from 0-19 to 0-20 years; the cumulative results in this report represent the 0-20 age category

On 2/18/21, 4/29/21, and 5/20/21, WY revised case data, resulting in a downward revision of cumulative child cases

Appendix Table 4: Child Testing Data Available on 9/23/21*

COVID-19 Testing and Children

Location	Age range	Cumulative total tests (all ages)	Cumulative child tests	Percent children of total tests	Positive rate^
Arizona	0-19	5,363,646	1,107,959	20.7%	18.0%
Illinois	0-19	30,912,653	4,659,796	15.1%	6.1%
Indiana	0-19	13,308,638	2,926,569	22.0%	5.7%
Iowa [○]	0-17	2,143,750	128,625	6.0%	--
Minnesota [~]	0-19	11,969,747	1,931,424	16.1%	7.0%
Nevada	0-19	4,289,656	694,924	16.2%	9.1%
New Hampshire	0-19	2,372,213	444,343	18.7%	5.0%
Rhode Island	0-18	967,074	190,309	19.7%	13.6%
Tennessee	0-20	9,737,854	1,969,891	20.2%	13.6%
West Virginia [□]	0-20	3,755,942	572,030	15.2%	8.7%
Wyoming [#]	0-18	963,148	109,992	11.4%	10.1%

* Note: Data represent cumulative counts since states began reporting; All data reported by state/local health departments are preliminary and subject to change

^ Positive rate = number of child cases / number of child tests

○ On 5/20/21, 5/27/21, 6/3/21, 6/10/21, 6/17/21, 6/24/21, 7/1/21, and 7/8/21, IA revised testing data, resulting in a downward revision of cumulative tests for all ages; On 7/15/21, IA stopped updating child testing data; IA cumulative tests through 7/8/21

~ On 6/3/21, MN revised testing data, resulting in a downward revision of cumulative child tests; On 6/10/21, MN revised testing data, resulting in a downward revision of cumulative tests for all ages

□ On 6/17/21, WV revised testing data, resulting in a downward revision of cumulative child tests and cumulative tests for all ages; As of 8/19/21 WV changed definition of child case from 0-19 to 0-20

On 2/11/21 and 3/18/21, WY revised testing data, resulting in a downward revision of cumulative tests for all ages

Appendix Table 5A: Child Hospitalization Data Available on 9/23/21*

COVID-19-Associated Hospitalizations and Children

Location	Age range	Cumulative child hospitalizations	Cumulative total hospitalizations (all ages)	Percent children of total hospitalizations	Hospitalization rate^
Alaska	0-19	51	2,276	2.2%	0.2%
Arizona[#]	0-19	2,812	75,979	3.7%	1.4%
Colorado[†]	0-19	1,168	37,909	3.1%	1.0%
Georgia[±]	0-17	1,952	79,081	2.5%	1.1%
Hawaii	0-17	151	3,641	4.1%	1.1%
Idaho	0-17	206	10,814	1.9%	0.7%
Indiana	0-19	1,582	76,177	2.1%	0.9%
Kansas	0-17	261	13,547	1.9%	0.4%
Minnesota	0-19	1,281	37,344	3.4%	0.9%
Mississippi	0-17	229	11,707	2.0%	0.3%
Nebraska[~]	0-19	131	6,891	1.9%	0.4%
New Hampshire[•]	0-19	30	1,756	1.7%	0.1%

* Note: Data represent cumulative counts since states began reporting; All data reported by state/local health departments are preliminary and subject to change

^ Hospitalization rate = number of child hospitalizations / number of child cases

On 10/8/20, 7/15/21, 7/22/21 and 7/29/21, AZ revised data, resulting in a downward revision of cumulative child hospitalizations; On 7/1/21, AZ revised data resulting in a 33% increase in cumulative child hospitalizations (592 added)

♦ On 8/26/21, CO revised hospitalization data, resulting in a downward revision of cumulative child hospitalizations

± On 7/8/21, GA revised hospitalization data, resulting in a downward revision of cumulative child hospitalizations

~ On 4/15/21, NE revised hospitalization data, resulting in a downward revision of cumulative hospitalizations for all ages; As of 6/30/21, NE COVID-19 dashboard is no longer available; NE cumulative hospitalizations through 6/24/21

• On 8/26/21, NH revised hospitalization data, resulting in a downward revision of cumulative child hospitalizations

Appendix Table 5B: Child Hospitalization Data Available on 9/23/21*

COVID-19-Associated Hospitalizations and Children

Location	Age range	Cumulative child hospitalizations	Cumulative total hospitalizations (all ages)	Percent children of total hospitalizations	Hospitalization rate^
New Jersey [‡]	0-17	1,467	90,653	1.6%	1.1%
New Mexico [×]	0-17	269	16,326	--	--
NYC	0-17	2,062	119,078	1.7%	2.0%
Ohio	0-19	2,131	71,301	3.0%	1.0%
Oregon	0-19	498	17,282	2.9%	0.9%
Rhode Island [□]	0-18	286	11,472	2.5%	1.1%
South Carolina [◇]	0-20	596	28,358	2.1%	0.3%
South Dakota [○]	0-19	152	7,263	2.1%	0.6%
Tennessee	0-20	740	32,784	2.3%	0.3%
Utah	0-14	490	21,676	2.3%	0.8%
Virginia [†]	0-19	1,025	36,047	2.8%	0.7%
Washington [▲]	0-19	823	34,528	2.4%	0.7%
Wisconsin	0-19	1,422	38,183	3.7%	1.0%

* Note: Data represent cumulative counts since states began reporting; All data reported by state/local health departments are preliminary and subject to change

^ Hospitalization rate = number of child hospitalizations / number of child cases

‡ On 8/26/21, NJ revised hospitalization data, resulting in a downward revision of cumulative child hospitalizations and cumulative hospitalizations for all ages

× As of 8/26/21, NM began reporting hospitalizations by age; due to only data available, NM is excluded from hospitalization percentages

□ On 6/17/21 and 7/29/21, RI revised hospitalization data, resulting in a downward revision of cumulative child hospitalizations and (on 6/17/21) cumulative hospitalizations for all ages

◇ On 9/9/21, SC revised hospitalization data, resulting in a downward revision of cumulative child hospitalizations

○ On 6/3/21, 6/10/21, 6/17/21, 6/24/21, 7/1/21, 7/8/21, 7/15/21, 7/22/21, and 8/19/21, SD revised hospitalization data, resulting in a downward revision of child cumulative hospitalizations and cumulative hospitalizations for all ages

† On 6/17/21, VA revised hospitalization data resulting in a downward revision of cumulative child hospitalizations

▲ On 9/2/21, due to available data, WA cumulative child hospitalizations increased by 22% (145 hospitalizations added); On 9/9/21, WA revised hospitalization data, resulting in a downward revision of cumulative child hospitalizations

Appendix Table 6A: Child Mortality Data Available on 9/23/21*

COVID-19-Associated Deaths and Children

Location	Age range	Cumulative child deaths	Cumulative total deaths (all ages)	Percent children of total deaths	Percent of child cases resulting in death^
Alabama [#]	0-17	8	11,510	0.07%	0.01%
Alaska	0-19	0	466	0.00%	0.00%
Arizona	0-19	38	19,658	0.19%	0.02%
Arkansas	0-17	3	7,528	0.04%	0.00%
California ^Δ	0-17	35	67,928	0.05%	0.01%
Colorado [‡]	0-19	20	7,441	0.27%	0.02%
Connecticut	0-19	5	8,483	0.06%	0.01%
Delaware	0-17	2	1,929	0.10%	0.01%
District of Columbia	0-19	0	1,171	0.00%	0.00%
Florida	0-15	19	51,240	0.04%	0.00%
Georgia	0-17	16	21,709	0.07%	0.01%
Guam	0-19	3	179	1.68%	0.11%
Hawaii	0-17	1	721	0.14%	0.01%
Idaho	0-17	0	2,687	0.00%	0.00%
Illinois	0-19	25	24,699	0.10%	0.01%
Indiana	0-19	13	14,864	0.09%	0.01%
Iowa	0-17	3	6,482	0.05%	0.01%
Kansas [□]	0-17	2	5,919	0.03%	0.00%
Kentucky	0-19	4	8,422	0.05%	0.00%
Louisiana [○]	0-17	16	13,702	0.12%	0.01%
Maine	0-19	1	1,009	0.10%	0.01%
Maryland	0-19	11	10,348	0.11%	0.01%
Massachusetts [~]	0-19	9	18,062	0.05%	0.01%
Minnesota	0-19	3	8,049	0.04%	0.00%

* Note: Data represent cumulative counts since states began reporting; All data reported by state/local health departments are preliminary and subject to change;

^ Number of child deaths / number of child cases;

As of 8/13/20, AL changed definition of child case, resulting in a downward revision of cumulative child deaths; On 7/1/21, AL revised mortality data, resulting in a downward revision of cumulative child deaths;

As of 8/5/21, due to available data and changes made to dashboard, AL cumulative deaths through 7/29/21

Δ On 8/12/21, CA revised mortality data, resulting in a downward revision of cumulative deaths for all ages

‡ On 9/2/21, CO cumulative deaths for all ages show a decrease due to different available mortality measure

□ On 3/18/21, KS revised mortality data, resulting in a downward revision of cumulative deaths for all ages

○ On 8/5/21, due to available data and changes made to dashboard, definition of LA total cumulative deaths changed

~ As of 9/3/20, MA changed reporting from total child cases to cases added in last two weeks; 9/23/21 totals calculated using MA Dept. of Public Health COVID-19 Dashboard published 9/23/21 (data from 9/5/21-9/18/21) and 9/2/21 version of this report

Appendix Table 6B: Child Mortality Data Available on 9/23/21*

COVID-19-Associated Deaths and Children

Location	Age range	Cumulative child deaths	Cumulative total deaths (all ages)	Percent children of total deaths	Percent of child cases resulting in death^
Mississippi	0-17	7	9,395	0.07%	0.01%
Missouri	0-17	6	11,314	0.05%	0.01%
Nebraska^o	0-19	4	2,259	0.18%	0.01%
Nevada	0-19	7	6,948	0.10%	0.01%
New Hampshire	0-19	0	1,466	0.00%	0.00%
New Jersey	0-17	7	24,491	0.03%	0.01%
New Mexico[±]	0-17	4	4,689	--	--
North Carolina	0-17	6	16,012	0.04%	0.00%
North Dakota	0-19	1	1,595	0.06%	0.00%
NYC	0-17	29	34,133	0.08%	0.03%
Ohio[~]	0-19	10	21,596	0.05%	0.00%
Oklahoma	0-17	4	8,715	0.05%	0.00%
Oregon	0-19	5	3,649	0.14%	0.01%
Pennsylvania	0-19	17	29,030	0.06%	0.01%
Puerto Rico	0-19	7	3,109	0.23%	0.03%
South Carolina^x	0-20	20	11,957	0.17%	0.01%
South Dakota	0-19	0	2,115	0.00%	0.00%
Tennessee	0-20	20	14,677	0.14%	0.01%
Texas[#]	0-19	79	60,357	0.13%	--
Vermont	0-19	0	301	0.00%	0.00%
Virginia[□]	0-19	11	12,463	0.09%	0.01%
Washington[†]	0-19	13	7,271	0.18%	0.01%
Wisconsin	0-19	3	8,774	0.03%	0.00%
Wyoming	0-18	0	955	0.00%	0.00%

* Note: Data represent cumulative counts since states began reporting; All data reported by state/local health departments are preliminary and subject to change; ^ Number of child deaths / number of child cases

○ On 5/20/21, NE revised mortality data, resulting in a downward revision of cumulative deaths for all ages; As of 6/30/21, NE COVID-19 dashboard is no longer available; NE cumulative deaths through 6/24/21

± As of 8/26/21, NM began reporting mortality data by age; due to only available data, NM is excluded from mortality data percentages

~ On 3/4/21, OH revised mortality data, resulting in a downward revision of cumulative deaths for all ages

x As of 8/19/21, SC began reporting mortality data by age

As of 7/30/20, Texas provided age distribution for all COVID-19-associated deaths; Texas reported age for only 3% of total confirmed cases

Percent of child cases resulting in death omitted for Texas; Data for Texas in this report is limited to the case count for which age is provided

□ On 3/25/21, VA revised mortality data, resulting in a downward revision of cumulative deaths for all ages

† On 6/10/21, WA revised mortality data, resulting in a downward revision of cumulative deaths for all ages

Frequently Asked Questions

Q: *Why are the AAP and CHA collecting this data?*

A: Our goal is to provide a weekly snapshot of how COVID-19 is affecting children in the United States. CDC provides a national number of cases by age on its [COVID-19 data tracker](#), but there are no geographic indicators provided and the age data are not released on a regular schedule. Our data collection method allows for tracking the number of child cases weekly, as well as providing publicly reported case numbers for children at the state level.

Q: *The age ranges for children in the report are broad – why were these age ranges chosen and are data available for more specific age ranges of children?*

A: Each state makes different decisions about how to report the age distribution of COVID-19 cases, and as a result the age range for reported cases varies by state. For the purposes of this report it is not possible to standardize more detailed age ranges for children based on what is publicly available from the states at this time. Please refer to specific state health department websites of interest to see if the state provides more granular detail of cases by age (see report Appendix for links to all state data sources).

Q: *What is the definition of a COVID-19 case?*

A: COVID-19 cases are defined as persons who have been identified as a confirmed (via a diagnostic molecular test) or probable (via a clinical diagnosis) case. COVID-19 cases are reported by the states, [following reporting standards established by the CDC](#). For more information on the definitions of confirmed and probable cases, see the following resources: [COVID Tracking Project: Definitions](#); [CDC, COVID-19 Data and Surveillance](#).

Q: *Why are only a small portion (<5%) of child COVID-19 cases included for Texas?*

A: Texas Department of State Health Services reports overall confirmed cases but only a small fraction are included in the age distribution. Other sources for child COVID-19 cases are not included in the report but outline much higher numbers (eg, [Texas Public Schools COVID-19 Data](#)).

Q: *Why does the report not provide the percent of child cases that were symptomatic vs. asymptomatic or that had underlying conditions?*

A: For the report, we are limited to the data that states are making publicly available. At this time, states are not providing data related to symptoms or underlying conditions and age. CDC provides some information on COVID-19 hospitalizations by age on the [CDC COVID-NET dashboard](#).

Q: *For the child population for each state, does that match the listed age range for the state's child COVID-19 data?*

A: Yes, the report uses child population numbers that match on directly with the listed age range for children provided by each state. State population numbers were obtained from the [US Census Bureau](#).

Q: *The report provides “cumulative totals” for cases, tests, hospitalizations, and deaths for available states. Are those the total numbers since the states began reporting, or since the AAP and CHA started collecting this data?*

A: All “cumulative total” data represent cumulative counts since states began reporting COVID-19 data.

Q: *How can I learn more about COVID-19 cases in my state?*

A: Links to all state data sources are provided in the Appendix.

Q: *Are these data final?*

A: No. All data reported by state/local health departments included in this report are preliminary and subject to change and revision as health departments gather more information.

Q: *Is this the most recent report available? When will a new report be released?*

A: The most recent version of the report is available for [download on the AAP website](#). New reports are made available on a weekly basis at [aap.org/CovidStateData](#).

Additional Resources

- For more information about COVID-19 data in your area, we encourage you to reach out to your state and local health department officials
- Visit the [AAP Critical Updates](#) site for daily updates, resources, and guidance on COVID-19 and pediatrics
- For COVID-19 articles for parents in English and Spanish, visit [HealthyChildren.org](#), the parenting website of the AAP

Contact Information

This a joint report from the American Academy of Pediatrics and the Children's Hospital Association

- For technical questions, please contact the authors at:

Bill Cull, PhD

Senior Director, Research

American Academy of Pediatrics

wcull@aap.org

Mitch Harris, PhD

Director of Research

Children's Hospital Association

Mitch.Harris@childrenshospitals.org

- For media inquiries, please contact:

Lisa Black

Media Relations

American Academy of Pediatrics

lblack@aap.org

Gillian Ray

External Relations

Children's Hospital Association

Gillian.Ray@childrenshospitals.org

Acknowledgements

Special thanks to the following individuals for their contributions to this report: Alex Rothenburger, MPA (Children's Hospital Association), Vinson Do (Children's Hospital Association), Lynn Olson, PhD (American Academy of Pediatrics), Blake Sisk, PhD (American Academy of Pediatrics), Mary Pat Frintner, MSPH (American Academy of Pediatrics), Liz Gottschlich, MA (American Academy of Pediatrics), Kate Kornfeind, MPH (American Academy of Pediatrics), Dave Prentice, MS (American Academy of Pediatrics), and Chloe Somberg (American Academy of Pediatrics)