



US Child Health Trends

Compiled by AAP Research Staff

July 2023

American Academy of Pediatrics
DEDICATED TO THE HEALTH OF ALL CHILDREN®



The slides that follow are meant for public use.

- No permissions are required.
- The graphics are developed from publicly available federal data sources.
- At the bottom of each slide, the data source is given, and a link is provided for those seeking more information about the data source and possible data limitations.

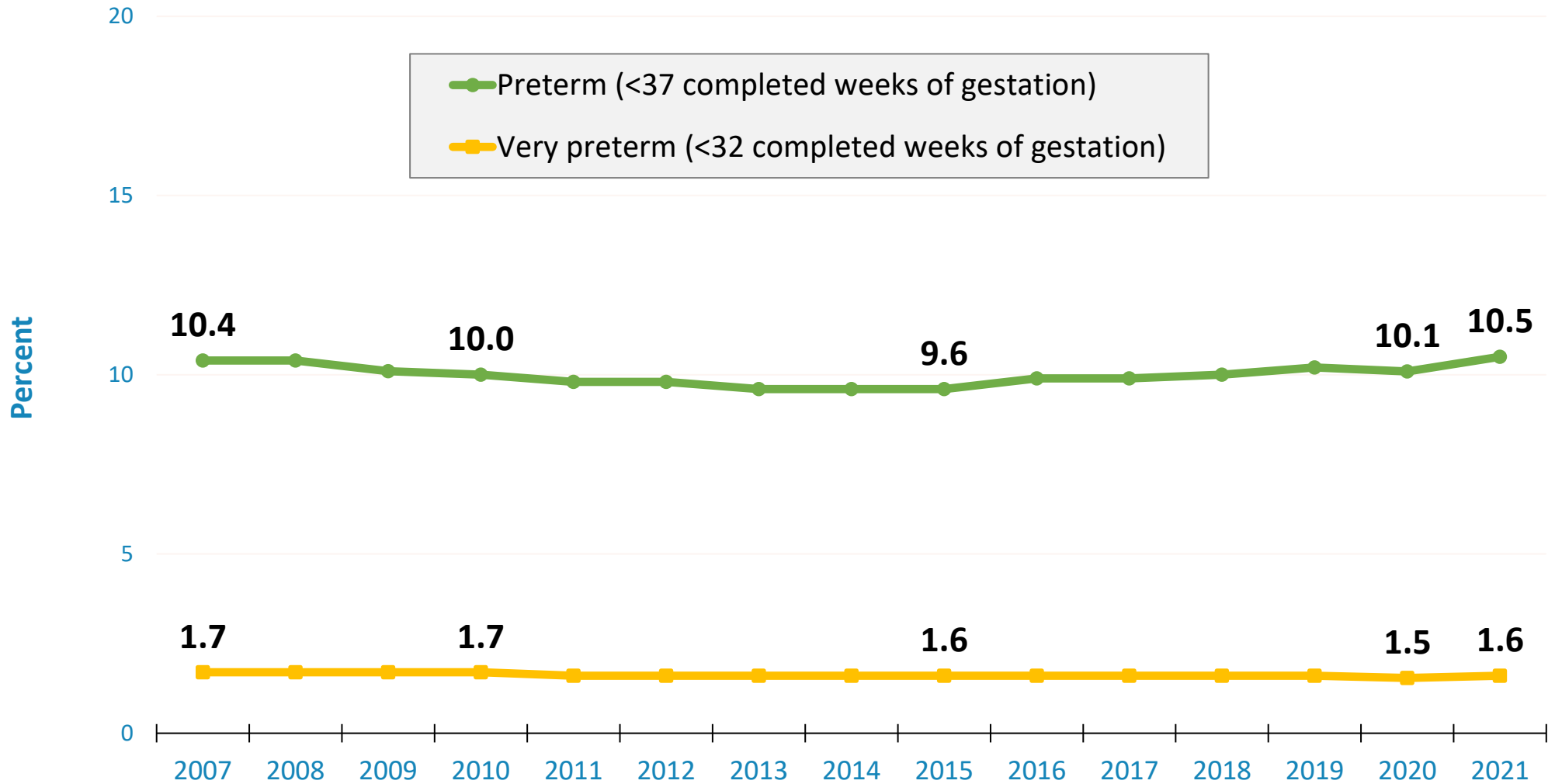


Child Health Trends

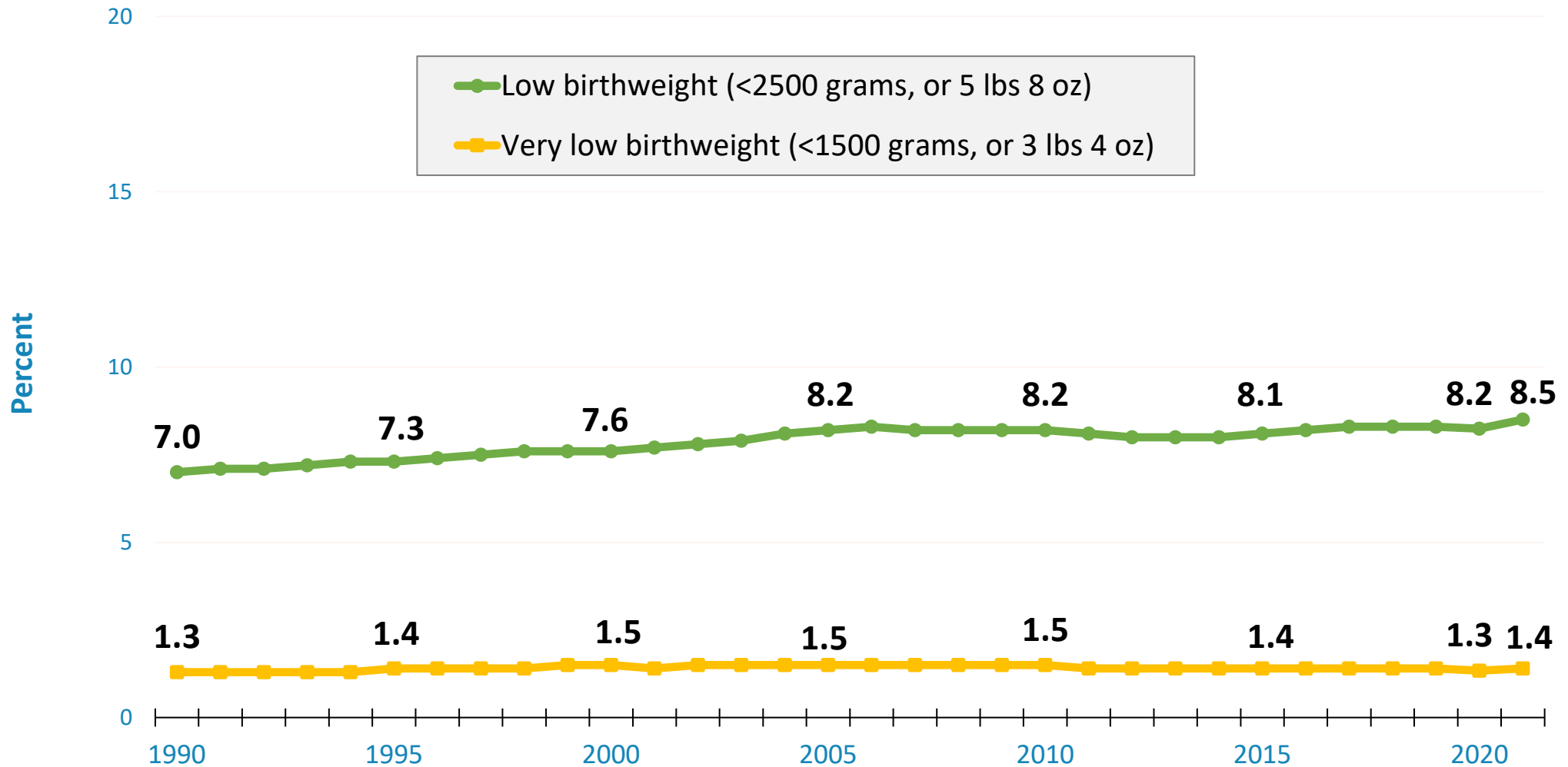
- Preterm birth and low birthweight
- Neonatal Abstinence Syndrome
- Infant mortality
- Child/adolescent injury and mortality
- Suicide and suicidal behavior
- Youth major depressive episodes
- Mental health diagnoses
- Adolescent alcohol use
- Adolescent cigarette use/vaping
- Asthma
- Activity limitation/disability
- ADHD
- Obesity
- Breastfeeding



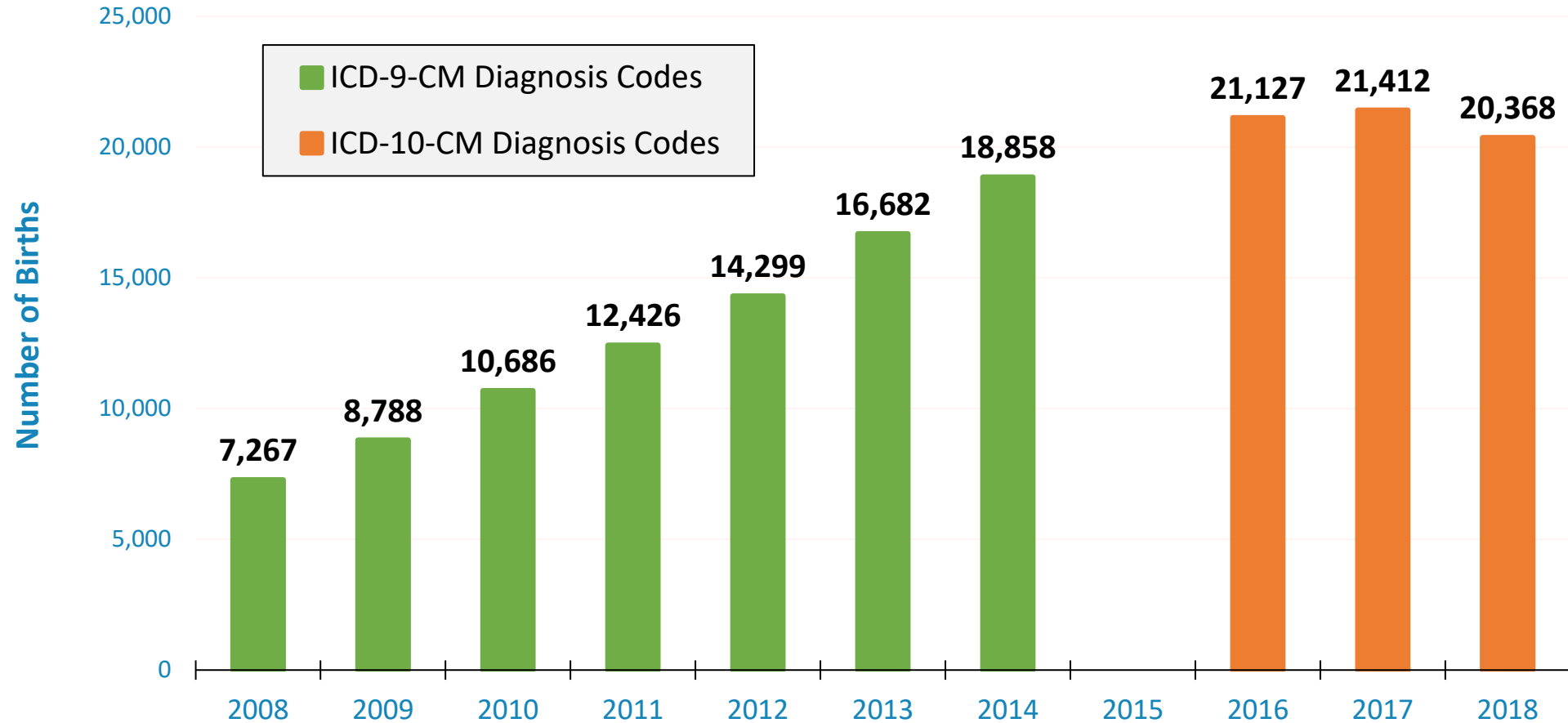
% of US Infants Born Preterm, 2007-2021



% of US Infants Born with Low Birthweight, 1990-2021



Number of US[^] Neonatal Abstinence Syndrome Births, 2008-2018*



[^]Estimates for 2008–2018 include data from the following in all years: Arizona, Arkansas, California, Colorado, Connecticut, Florida, Georgia, Hawaii, Illinois, Indiana, Iowa, Kansas, Kentucky, Louisiana, Maine, Maryland, Michigan, Minnesota, Missouri, Nebraska, Nevada, New Jersey, New Mexico, Ohio, Oregon, Pennsylvania, Rhode Island, South Carolina, South Dakota, Tennessee, Texas, Utah, Vermont, Virginia, Washington, West Virginia, and Wisconsin.

*Data for 2015 are not shown due to the transition from ICD-9-CM to ICD-10-CM on October 1, 2015.

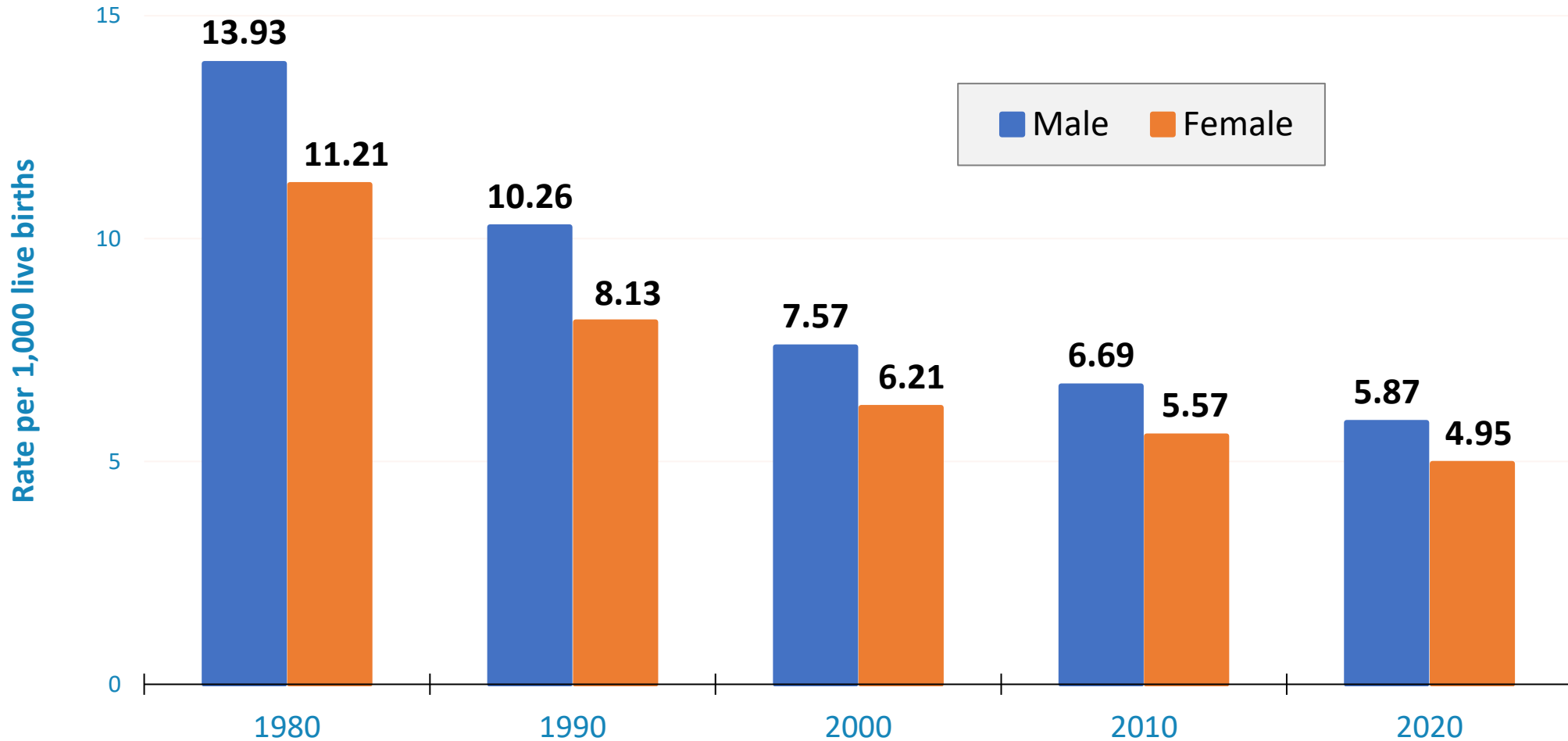
Source: Agency for Healthcare Research and Quality (AHRQ), Healthcare Cost and Utilization Project (HCUP), State Inpatient Databases (<https://www.hcup-us.ahrq.gov/reports/ataglance/HCUPtrendsNASbirthsUS.pdf>)

American Academy of Pediatrics

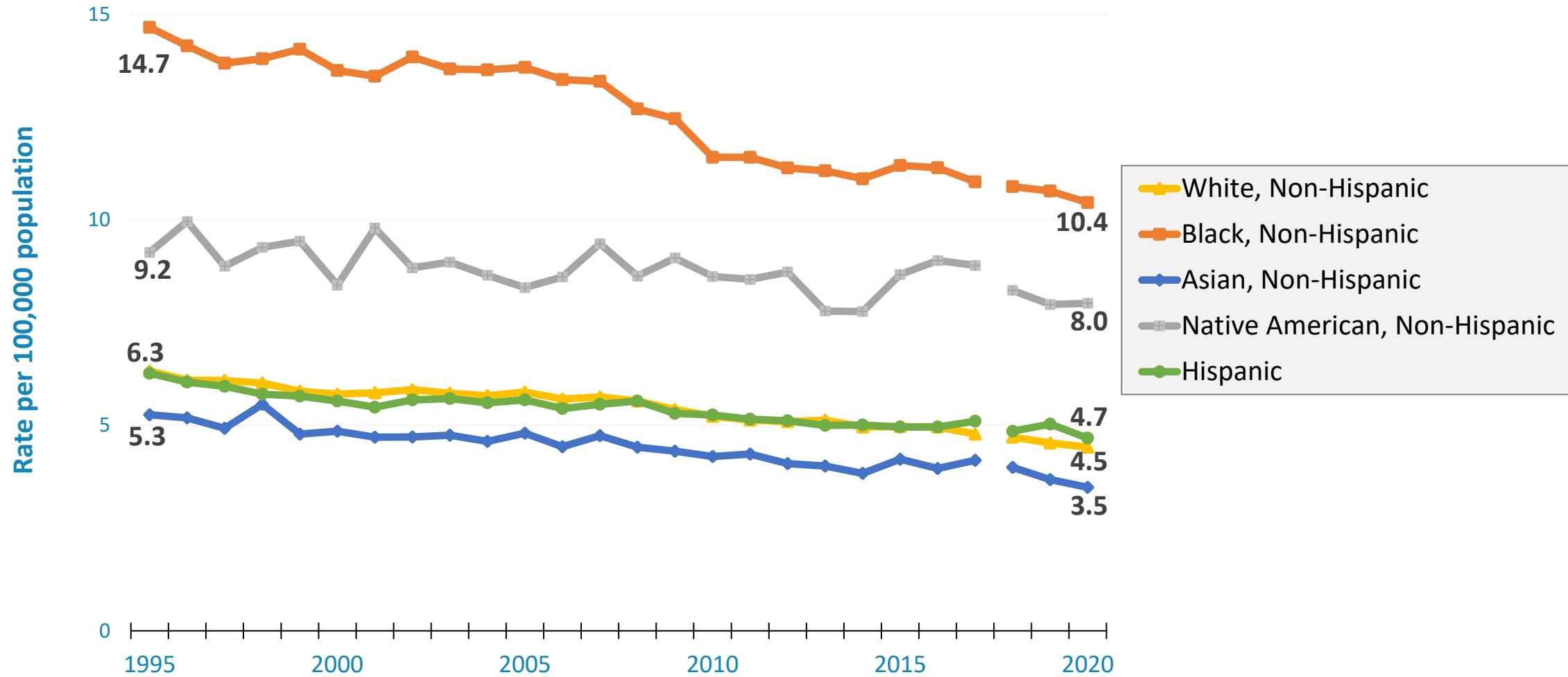
DEDICATED TO THE HEALTH OF ALL CHILDREN®



US Infant Mortality Rates (per 1,000 Live Births) by Gender, 1980-2020



US Infant Mortality Rates (per 1,000 Live Births) by Mother's Race/Ethnicity, 1995-2020



*1990-2017 data uses "bridged race" categories, whereas "single-race" categories are used beginning in 2018. As a result, estimates for 2018 and beyond are not directly comparable to previous years.

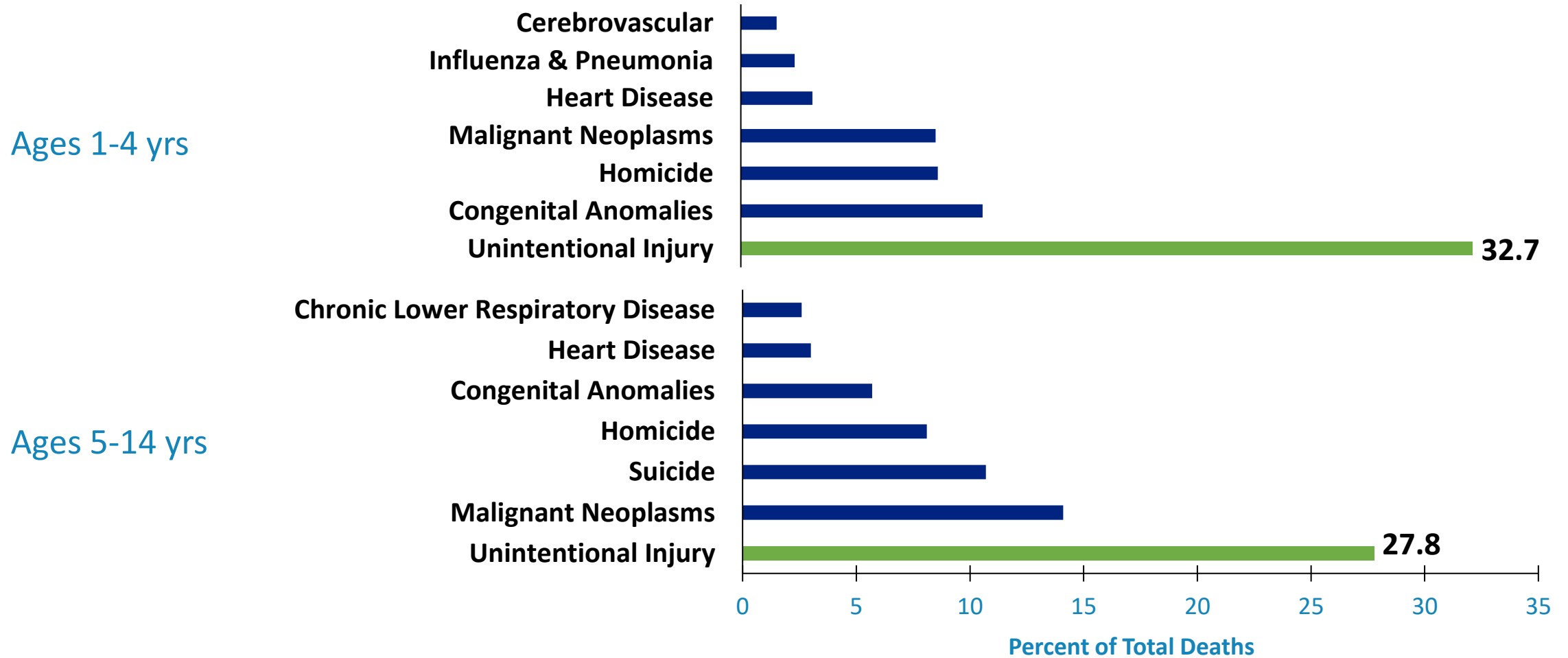
Source: Centers for Disease Control and Prevention, National Center for Health Statistics. National Vital Statistics System, Linked Birth / Infant Deaths on CDC WONDER Online Database (<https://wonder.cdc.gov/lbd.html>)

American Academy of Pediatrics

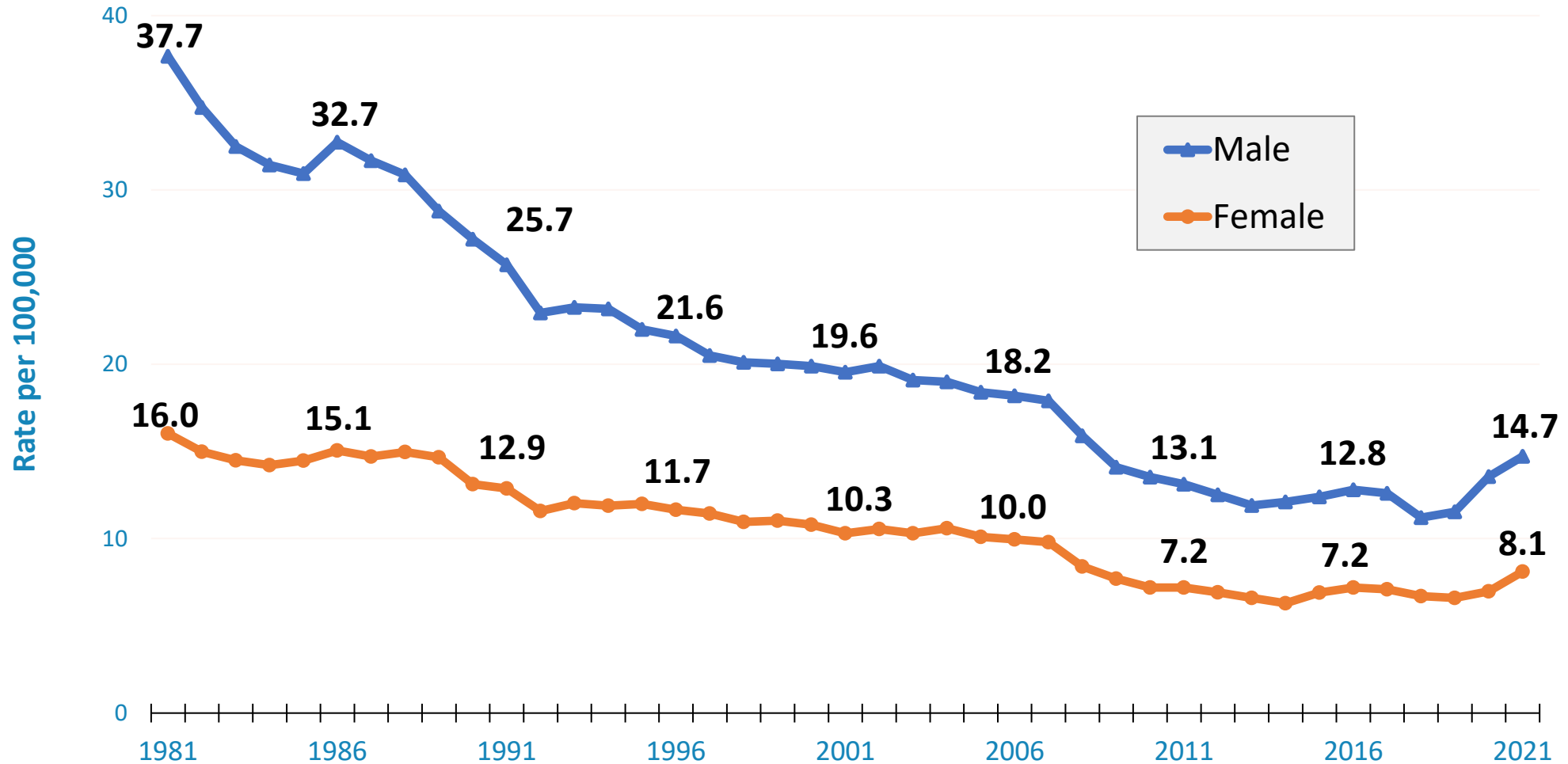
DEDICATED TO THE HEALTH OF ALL CHILDREN®



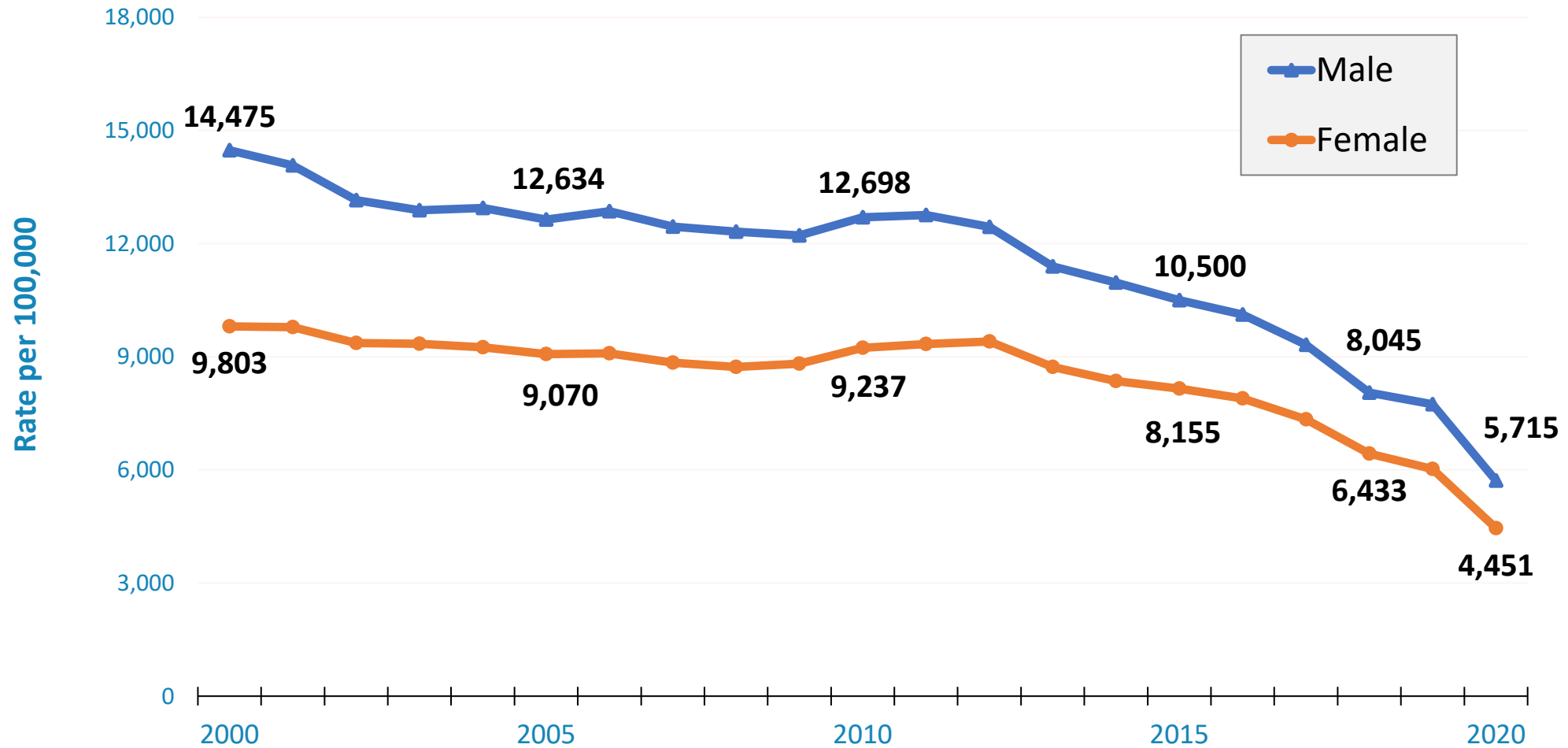
Leading Causes of Death among US Children (Ages 1-14) by Age Group, 2020



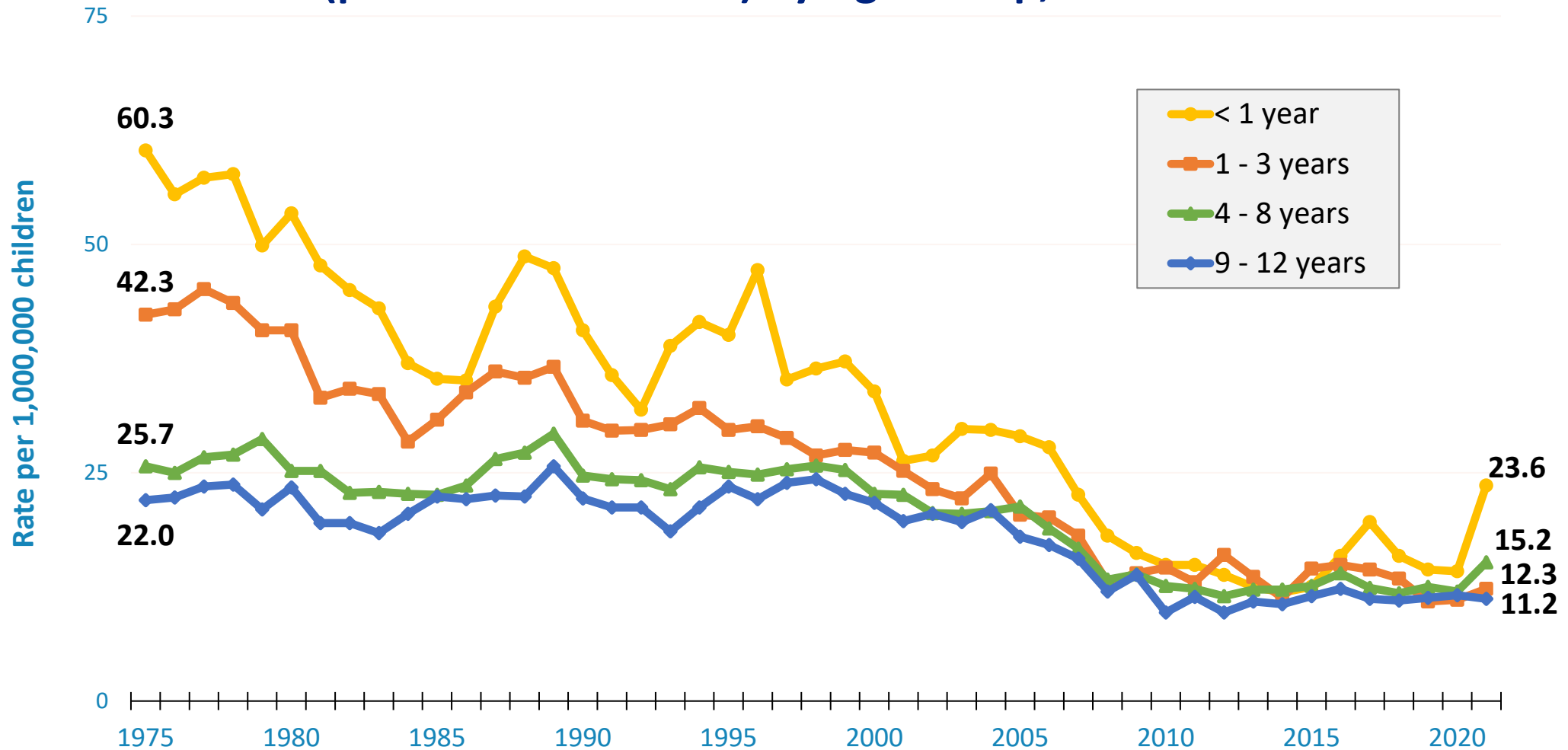
Fatal Unintentional Injuries (Rate per 100,000) among US Children (Ages 0-19) by Gender, 1981-2021



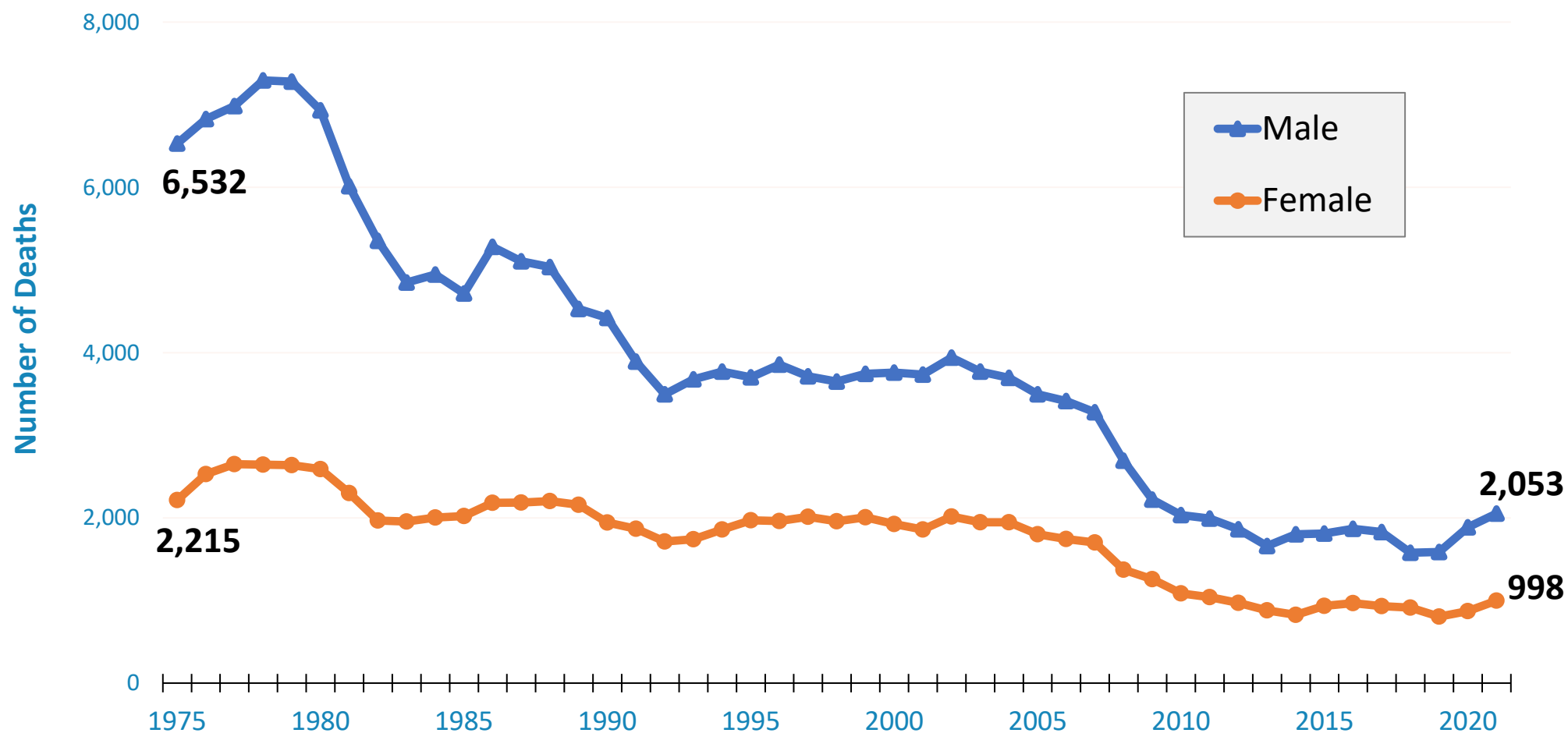
Non-Fatal Unintentional Injuries Treated in Emergency Rooms (Rate per 100,000) among US Children (Ages 0-19) by Gender, 2000-2020



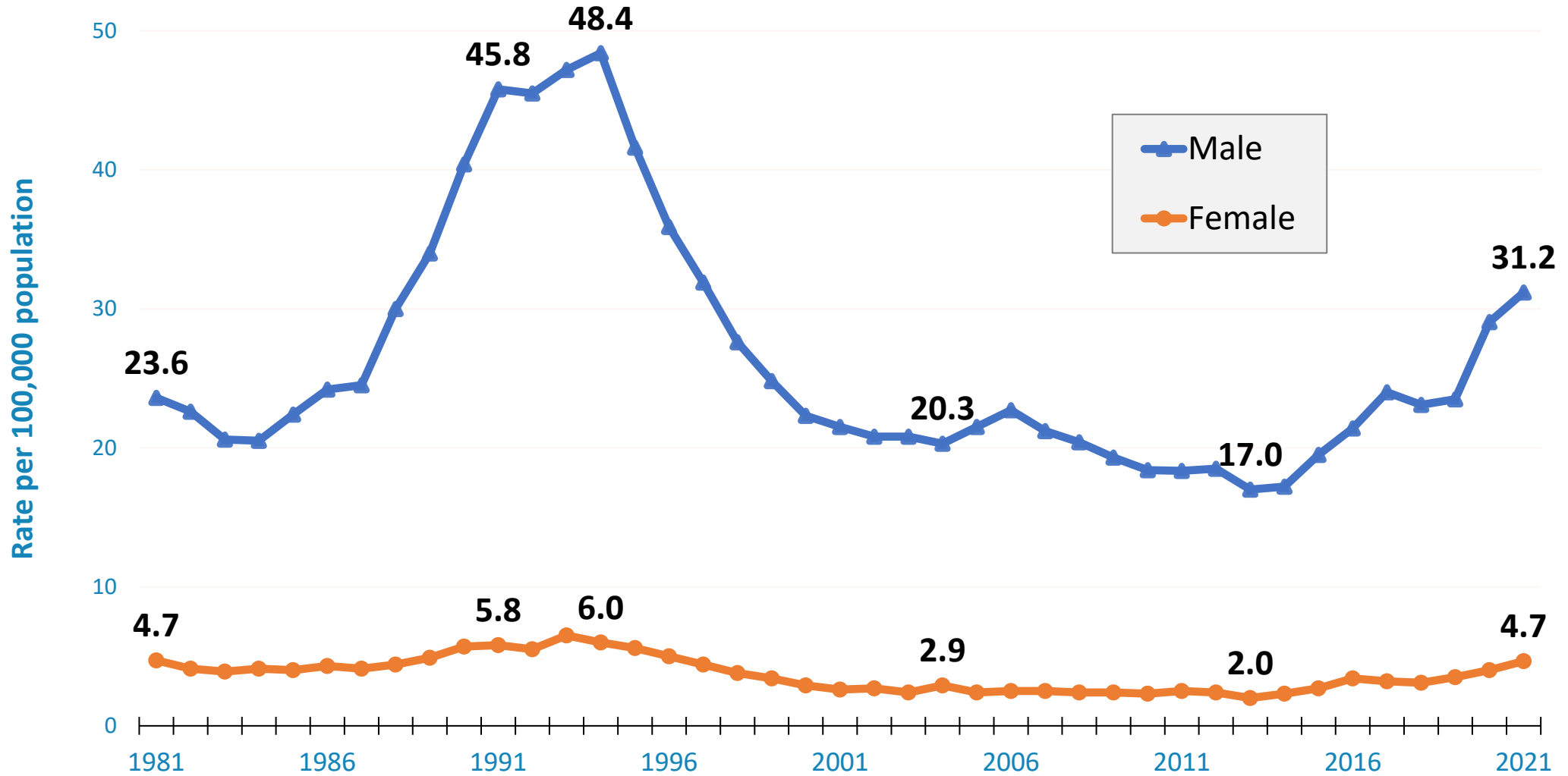
US Passenger Vehicle Child Occupant Deaths (per Million Children) by Age Group, 1975-2021



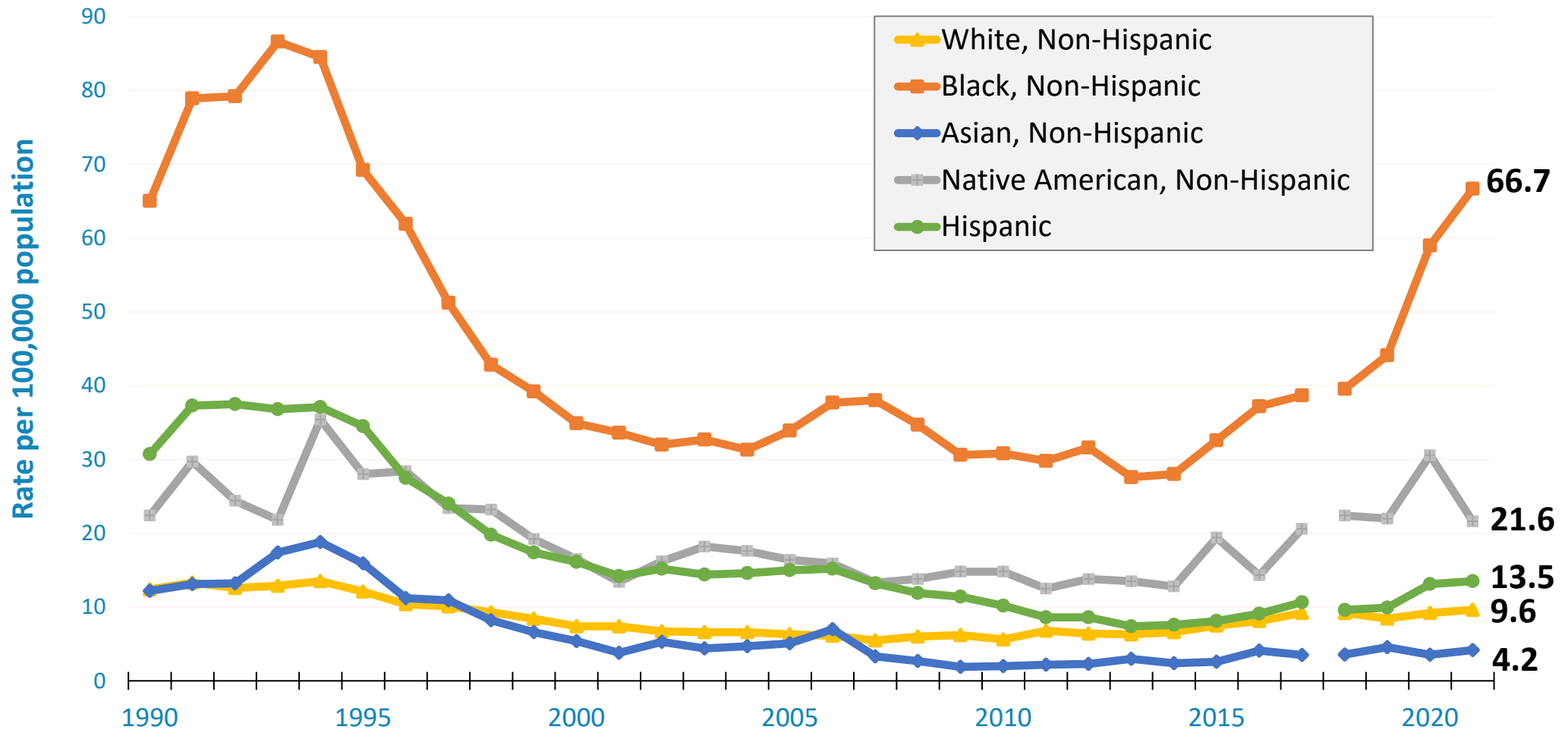
US Teenage (Ages 13-19) Motor Vehicle Crash Deaths by Gender, 1975-2021



US Teenage (Ages 15-19) Firearm-Related Deaths by Gender, 1981-2021

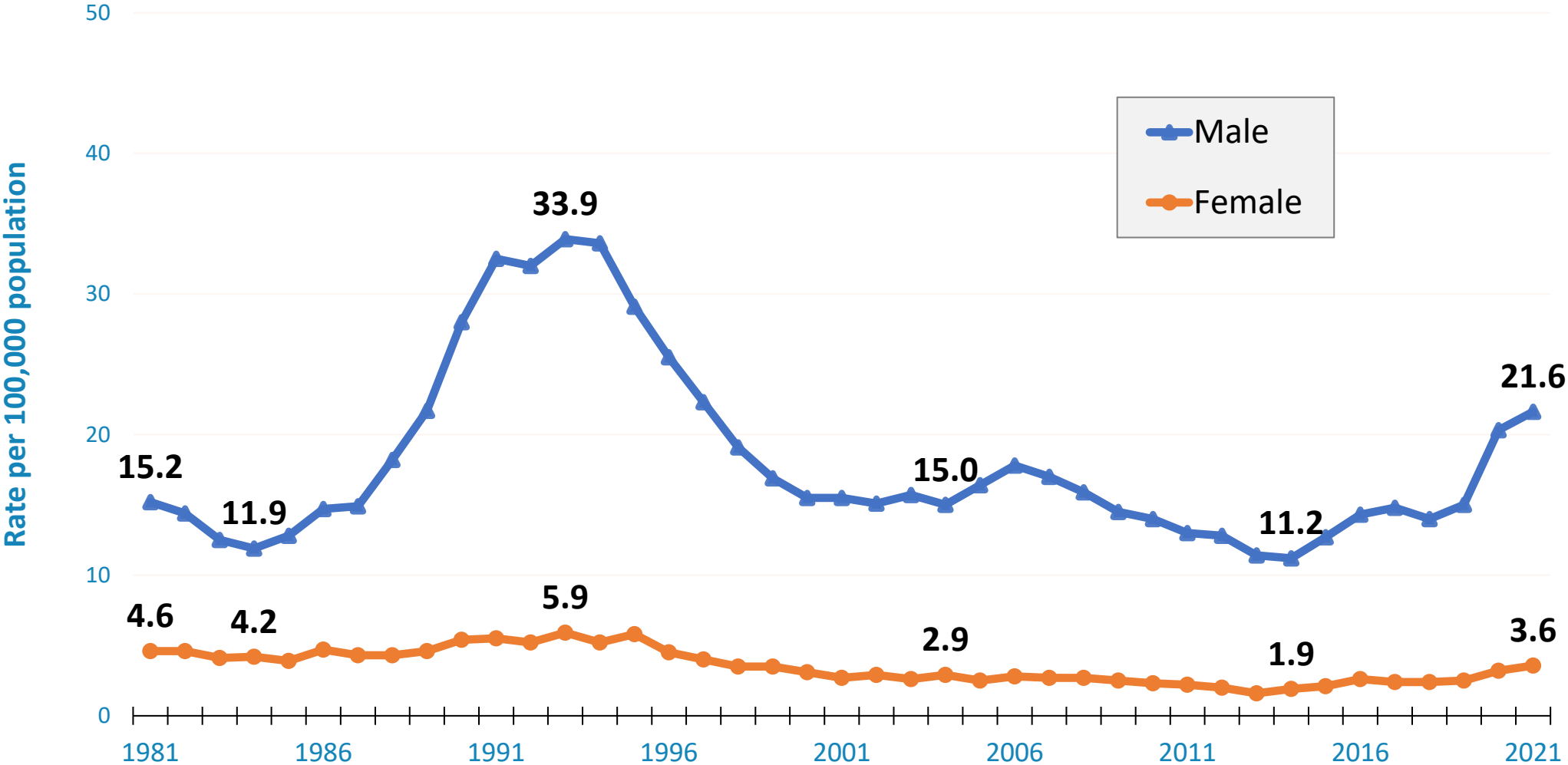


US Teenage (Ages 15-19) Firearm-Related Deaths by Race/Ethnicity, 1990-2021*



*1990-2017 data uses "bridged race" categories, whereas "single-race" categories are used beginning in 2018. As a result, estimates for 2018 and beyond are not directly comparable to previous years.

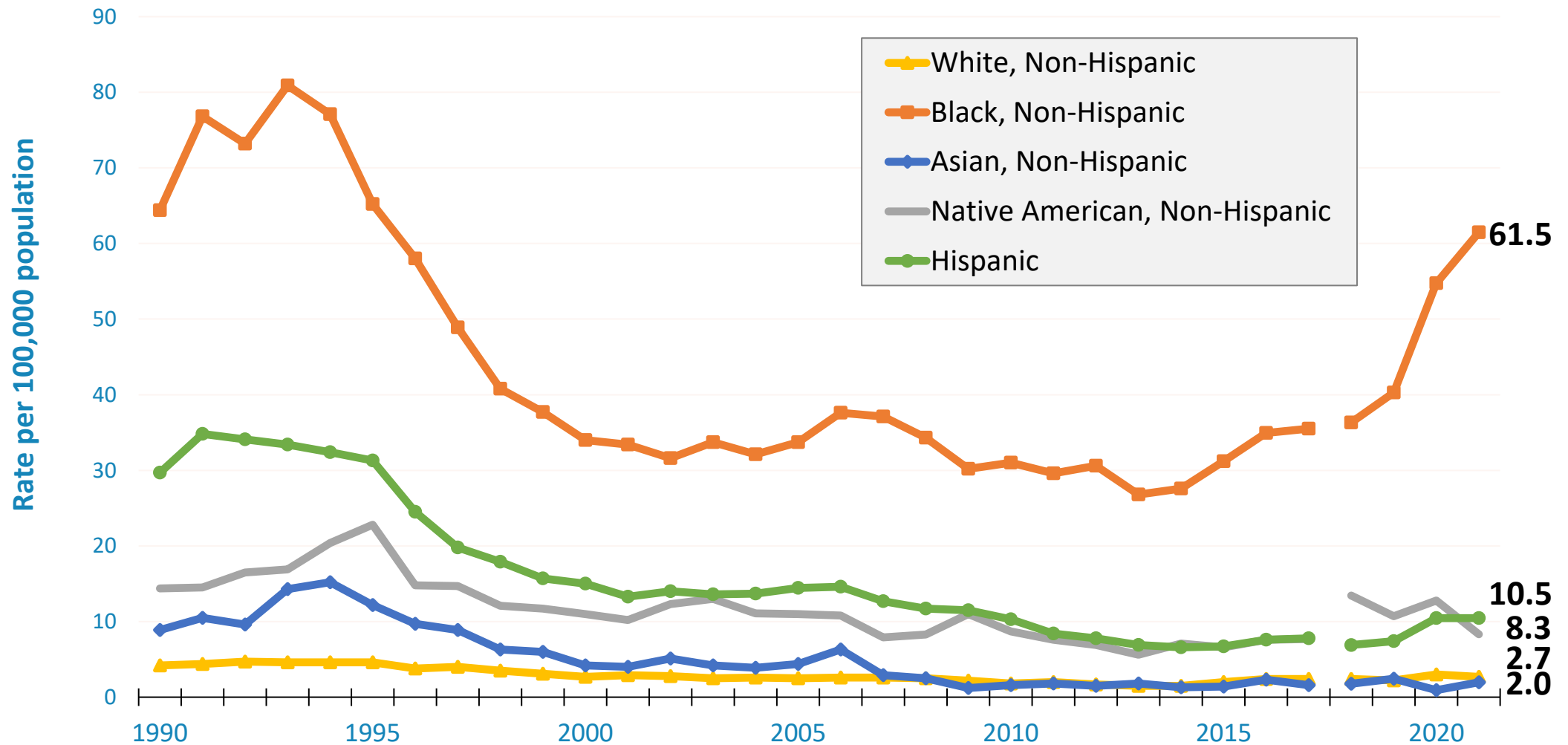
US Teenage (Ages 15-19) Homicide Deaths by Gender, 1981-2021



Source: CDC/National Center for Injury Prevention and Control, WISQARS fatal injury reports (<https://www.cdc.gov/injury/wisqars/fatal.html>)



US Teenage (Ages 15-19) Homicide Deaths by Race/Ethnicity, 1990-2021*



*1990-2017 data uses "bridged race" categories, whereas "single-race" categories are used beginning in 2018. As a result, estimates for 2018 and beyond are not directly comparable to previous years.

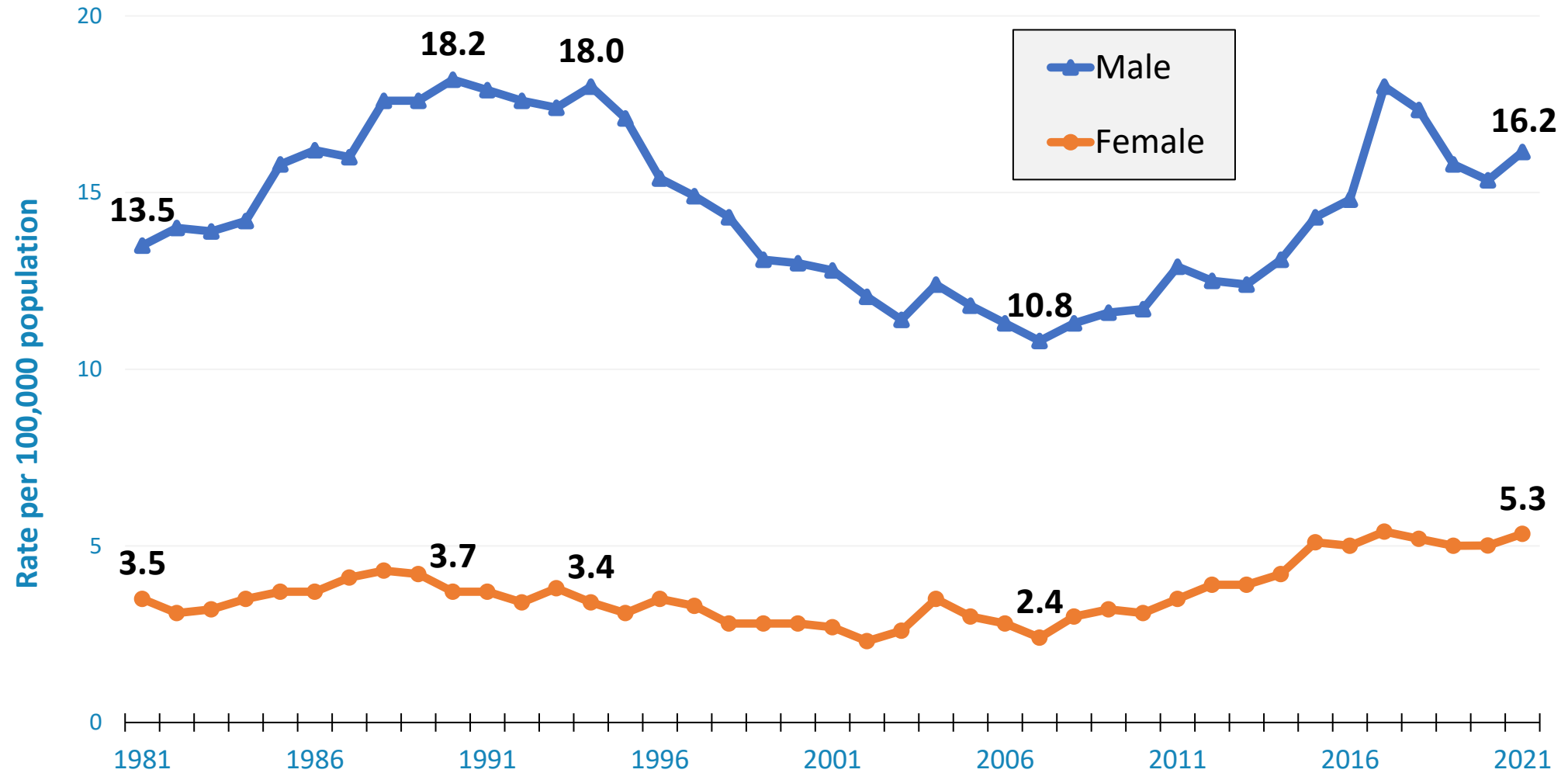
Source: CDC/National Center for Injury Prevention and Control, WISQARS fatal injury reports (<https://www.cdc.gov/injury/wisqars/fatal.html>)

American Academy of Pediatrics

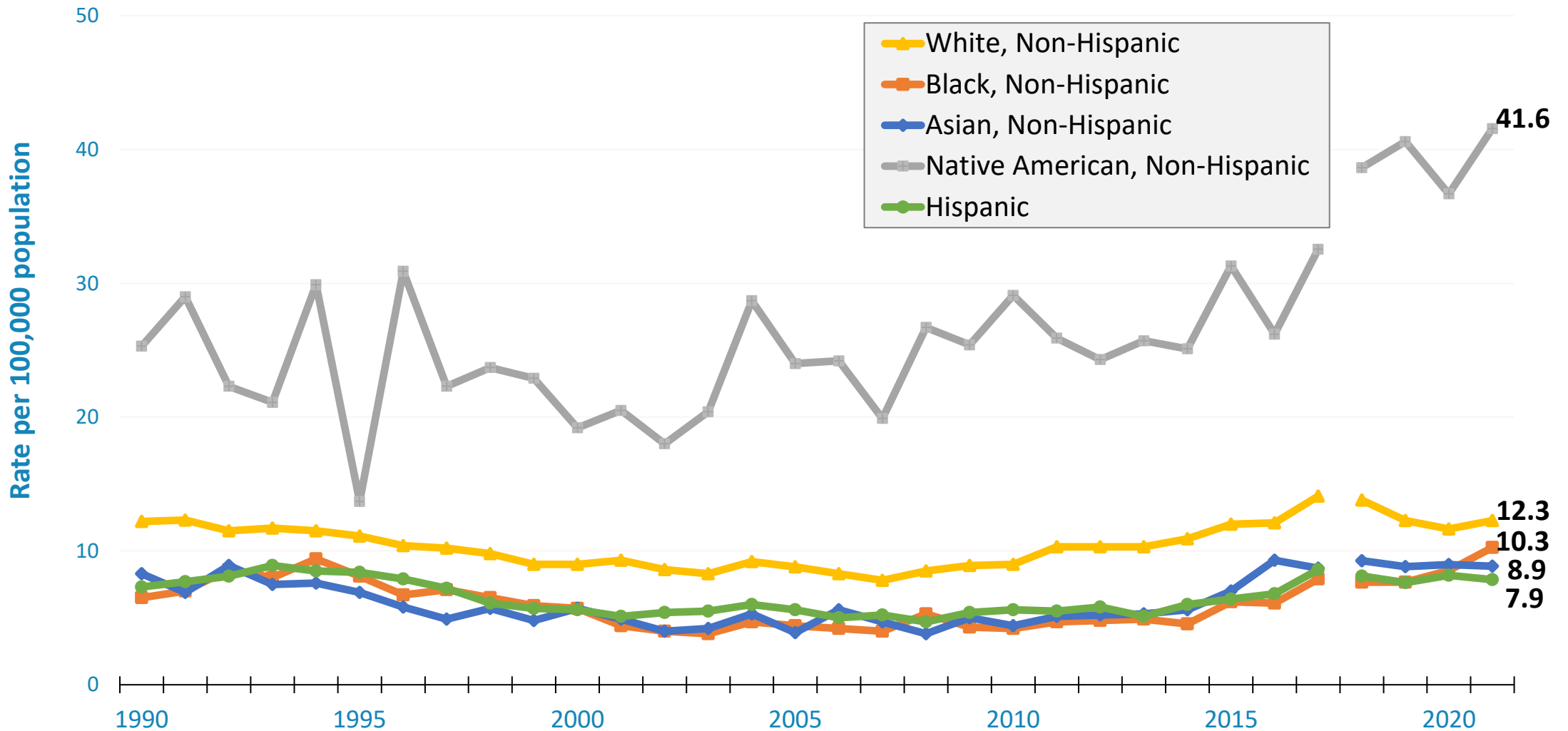
DEDICATED TO THE HEALTH OF ALL CHILDREN®



US Teenage (Ages 15-19) Suicide Deaths by Gender, 1981-2021



US Teenage (Ages 15-19) Suicide Deaths by Race/Ethnicity, 1990-2021*



*1990-2017 data uses "bridged race" categories, whereas "single-race" categories are used beginning in 2018. As a result, estimates for 2018 and beyond are not directly comparable to previous years.

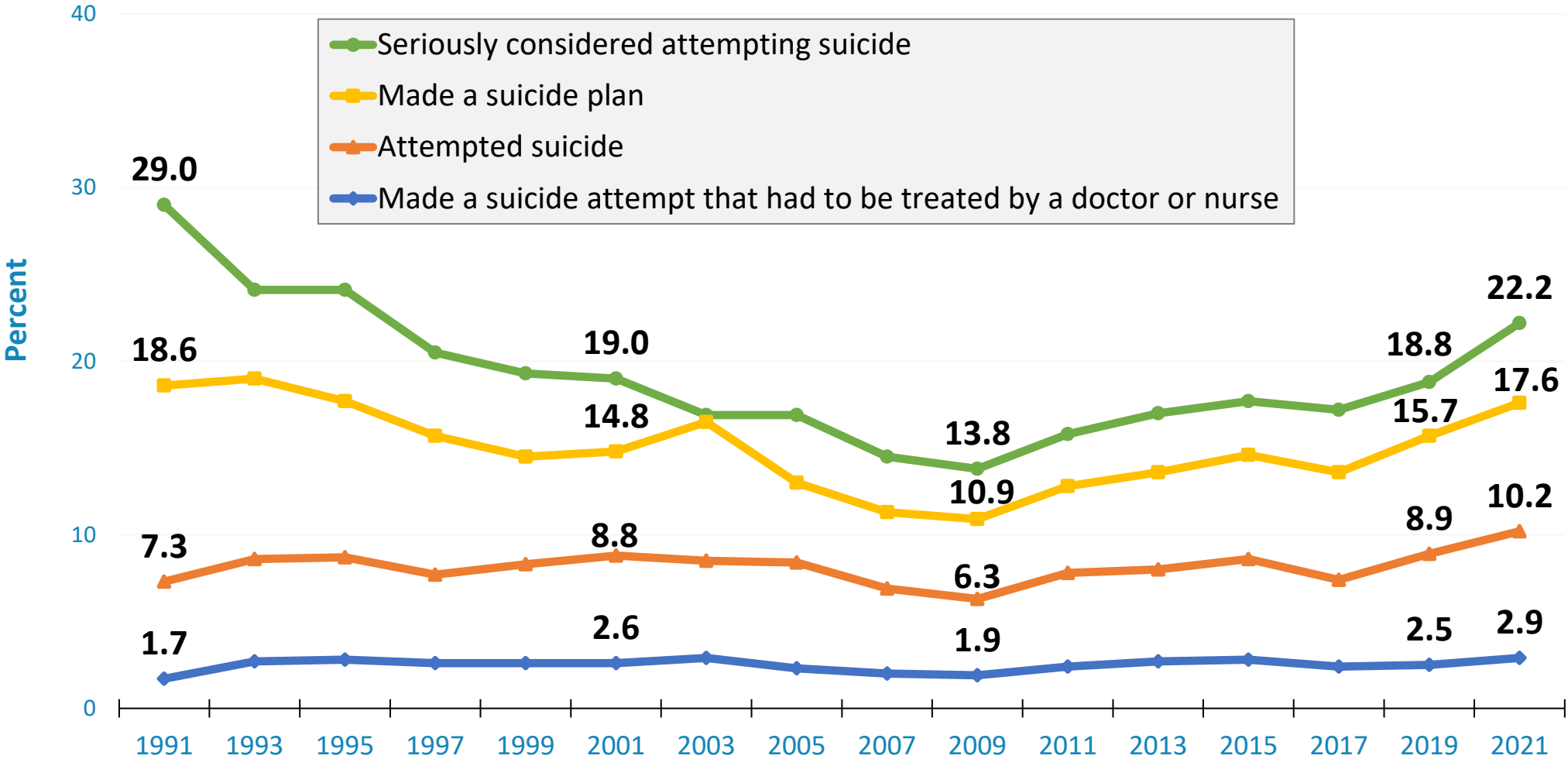
Source: CDC/National Center for Injury Prevention and Control, WISQARS fatal injury reports
<https://www.cdc.gov/injury/wisqars/fatal.html>

American Academy of Pediatrics

DEDICATED TO THE HEALTH OF ALL CHILDREN®



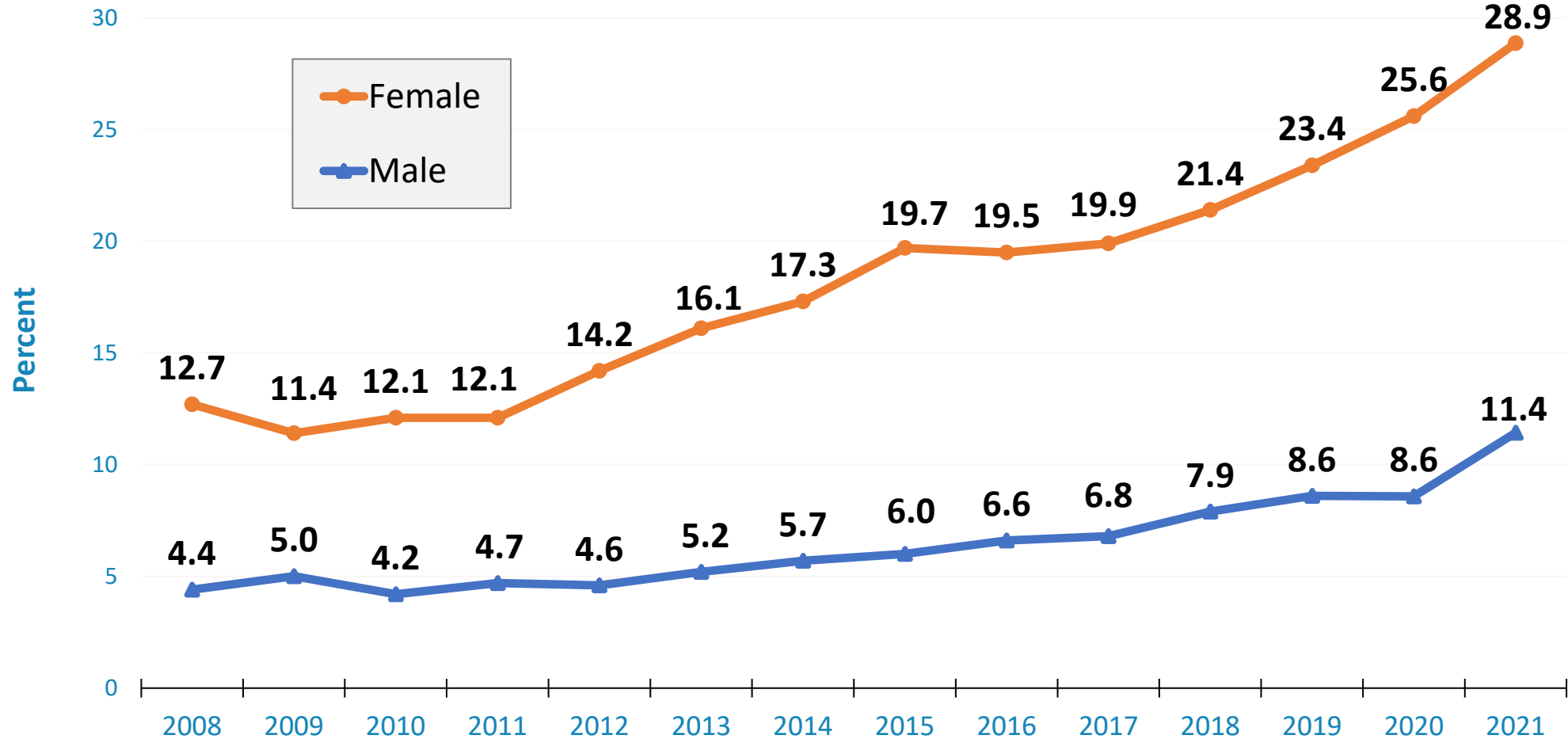
% of US Students (9th - 12th Graders) Who Reported Suicide-Related Behavior, 1991-2021



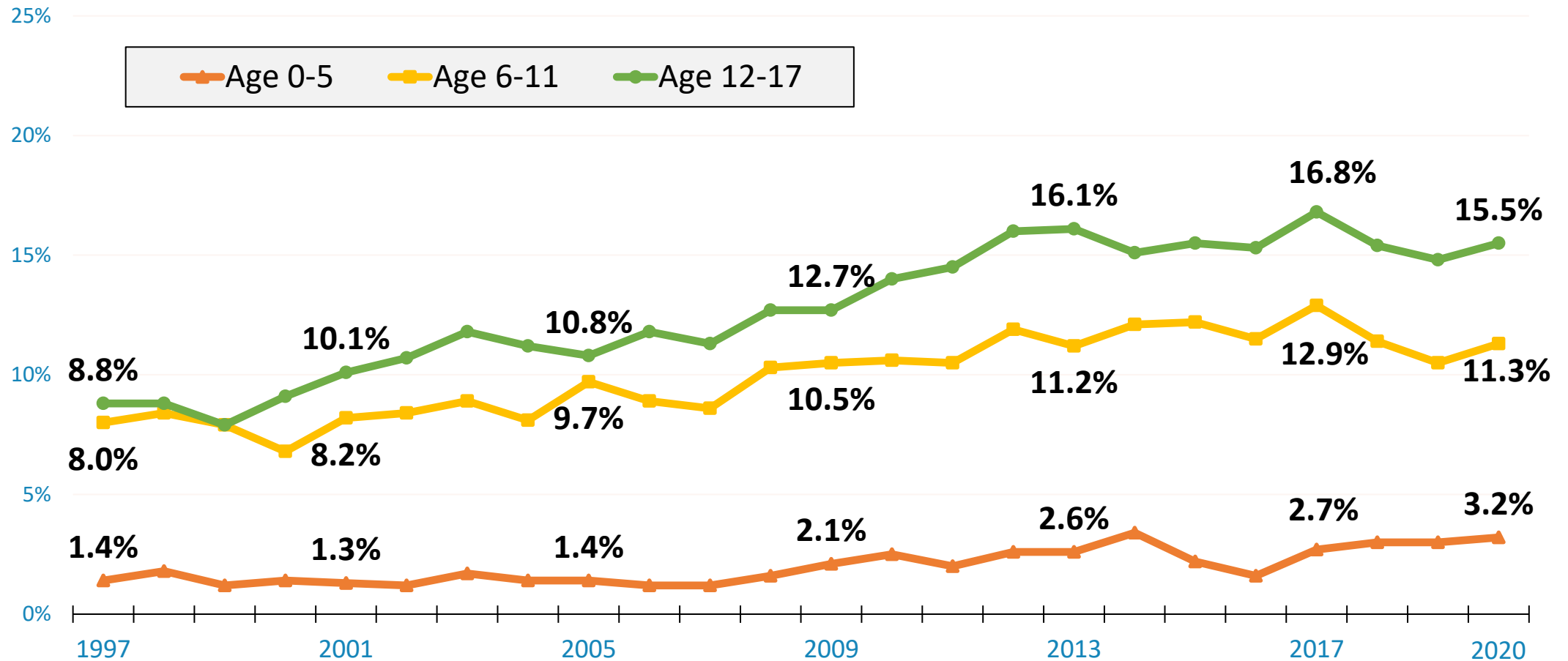
Source: CDC/Division of Adolescent and School Health, Youth Risk Behavior Survey (YRBS)
[\(https://nccd.cdc.gov/Youthonline/App/\)](https://nccd.cdc.gov/Youthonline/App/)



% of US Youth (Ages 12-17) Who Reported a Major Depressive Episode in the Past Year by Gender, 2008-2021



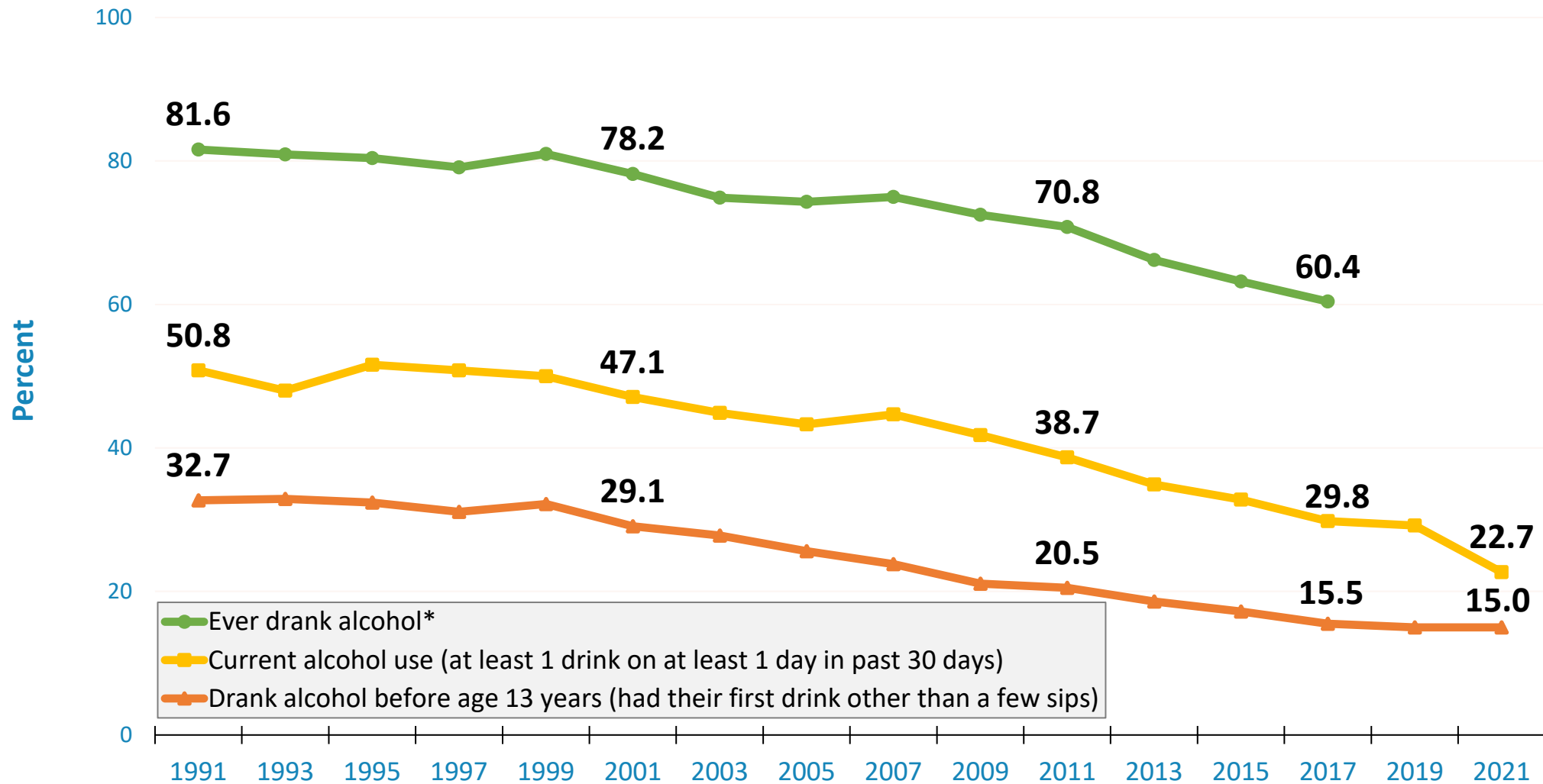
% of US Children (Ages 0-17) with Any Mental Health Diagnosis* by Age Group, 1997-2020



*Mental health diagnosis is defined broadly - it includes adjustment disorders; anxiety disorders; attention-deficit/conduct/disruptive behavior disorders; cognitive disorders; developmental disorders; impulse control disorders; mood disorders; personality disorders; psychotic disorders; alcohol/substance-related disorders; suicide and intentional self-inflicted injury; and other miscellaneous mental health disorders.

Source: AAP Research analysis of AHRQ, Medical Expenditure Panel Survey (MEPS) data

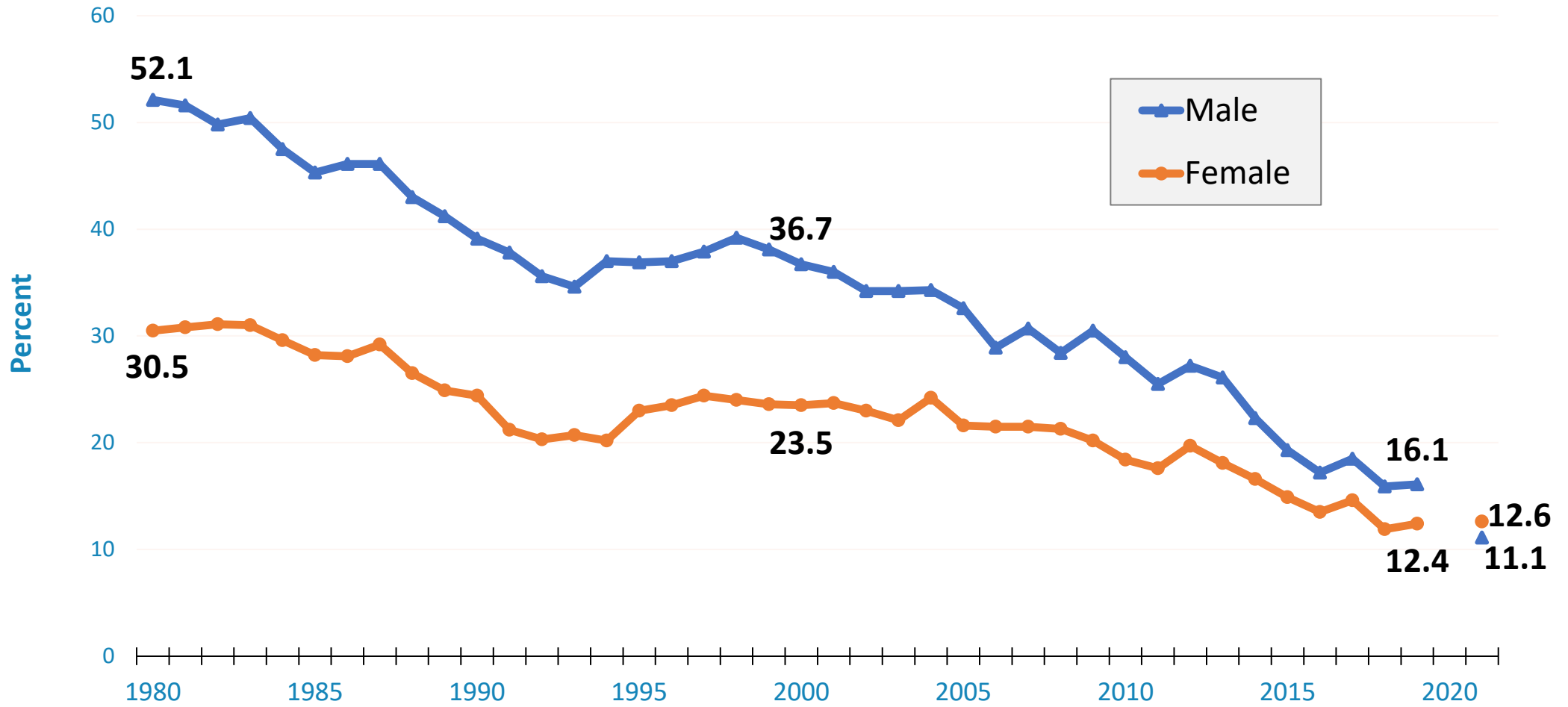
% of US Students (9th - 12th Graders) Who Reported Alcohol Use, 1991-2021



*Beginning in 2019, the question related to "ever drank alcohol" is no longer included in the Youth Risk Behavior Survey.



% of US 12th Grade Students Who Reported Having 5 or More Alcoholic Beverages in a Row in the Past 2 Weeks by Gender, 1980-2021*



*Due to the COVID-19 pandemic, data collection in 2020 was halted on March 15, 2020, resulting in a sample size of one-quarter the typical size. As a result, it is not possible to provide reliable estimates for demographic subgroups for 2020.

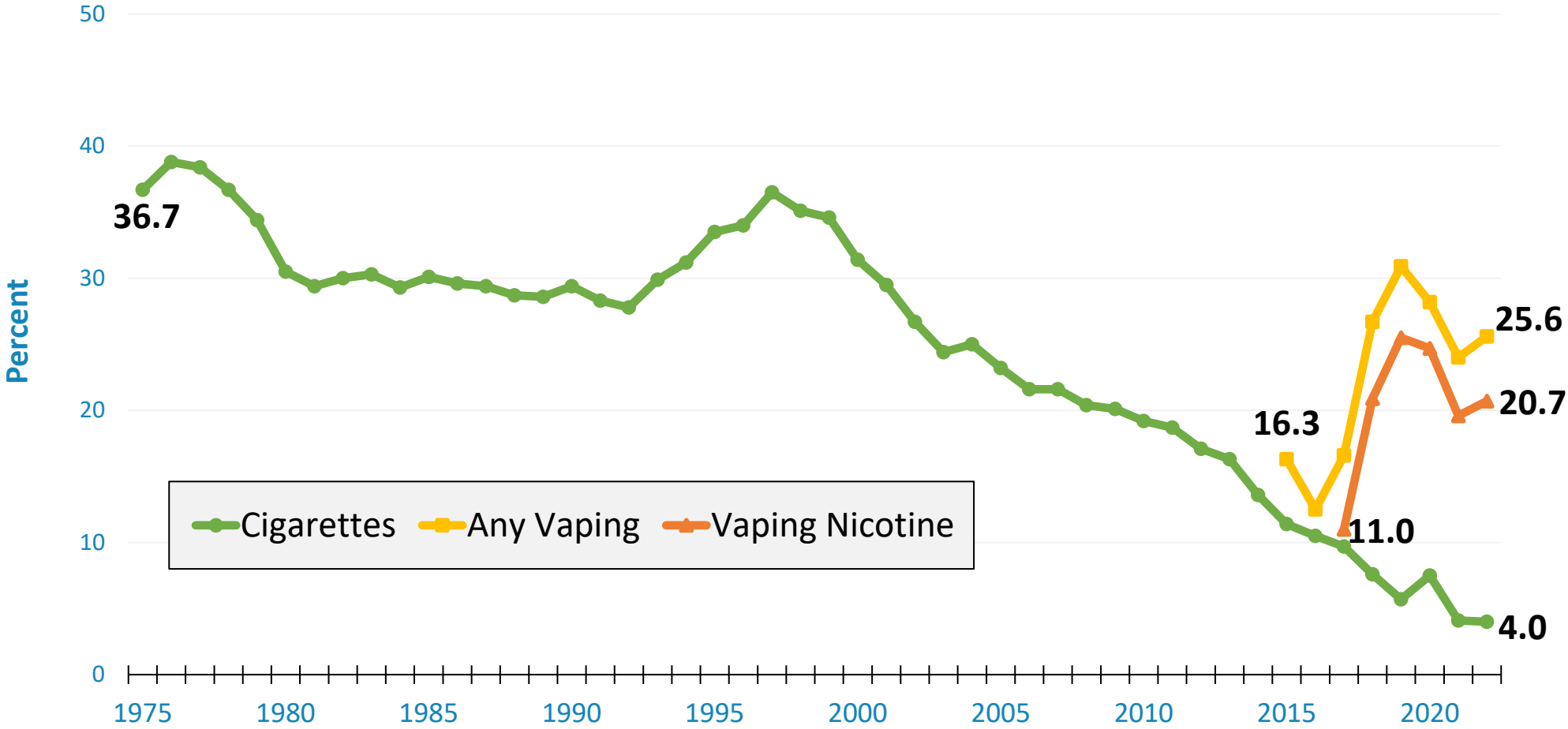
Source: National Institute on Drug Abuse and University of Michigan's Institute for Social Research, Monitoring the Future Survey (<https://www.childstats.gov/americaschildren/tables/beh2.asp>)

American Academy of Pediatrics

DEDICATED TO THE HEALTH OF ALL CHILDREN®



% of US 12th Grade Students Who Reported Cigarette Use and Vaping in the Past 30 Days, 1975-2022

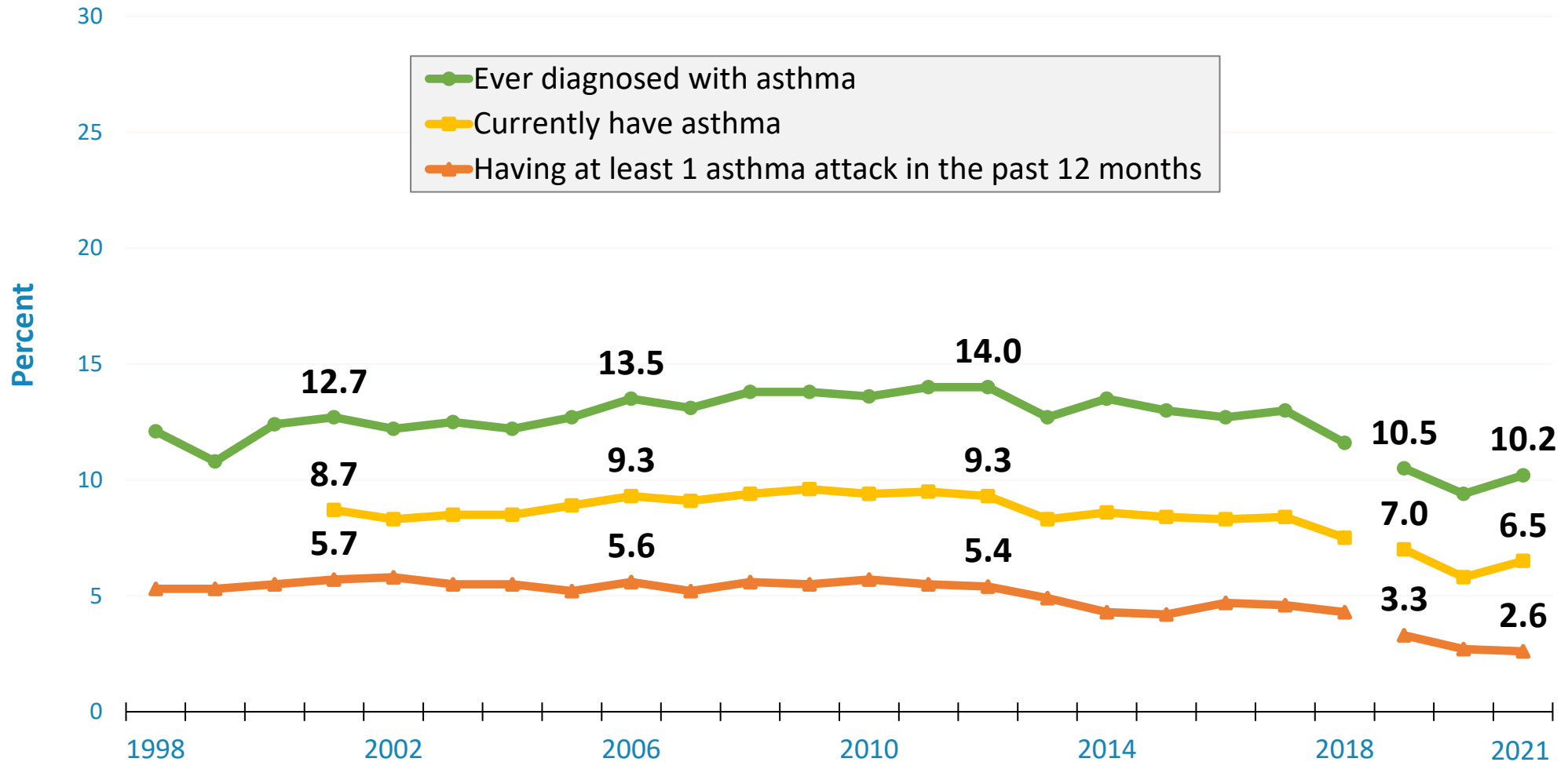


Source: National Institute on Drug Abuse and University of Michigan's Institute for Social Research, Monitoring the Future Survey

(<https://monitoringthefuture.org/wp-content/uploads/2022/12/mtf2022.pdf> and <https://monitoringthefuture.org/wp-content/uploads/2022/12/mtf2022table03.pdf>)



% of US Children (Ages 0-17) with Asthma According to Parent Report, 1997-2021*



*Estimates for 2019 and beyond are not directly comparable to previous years due to a survey re-design.

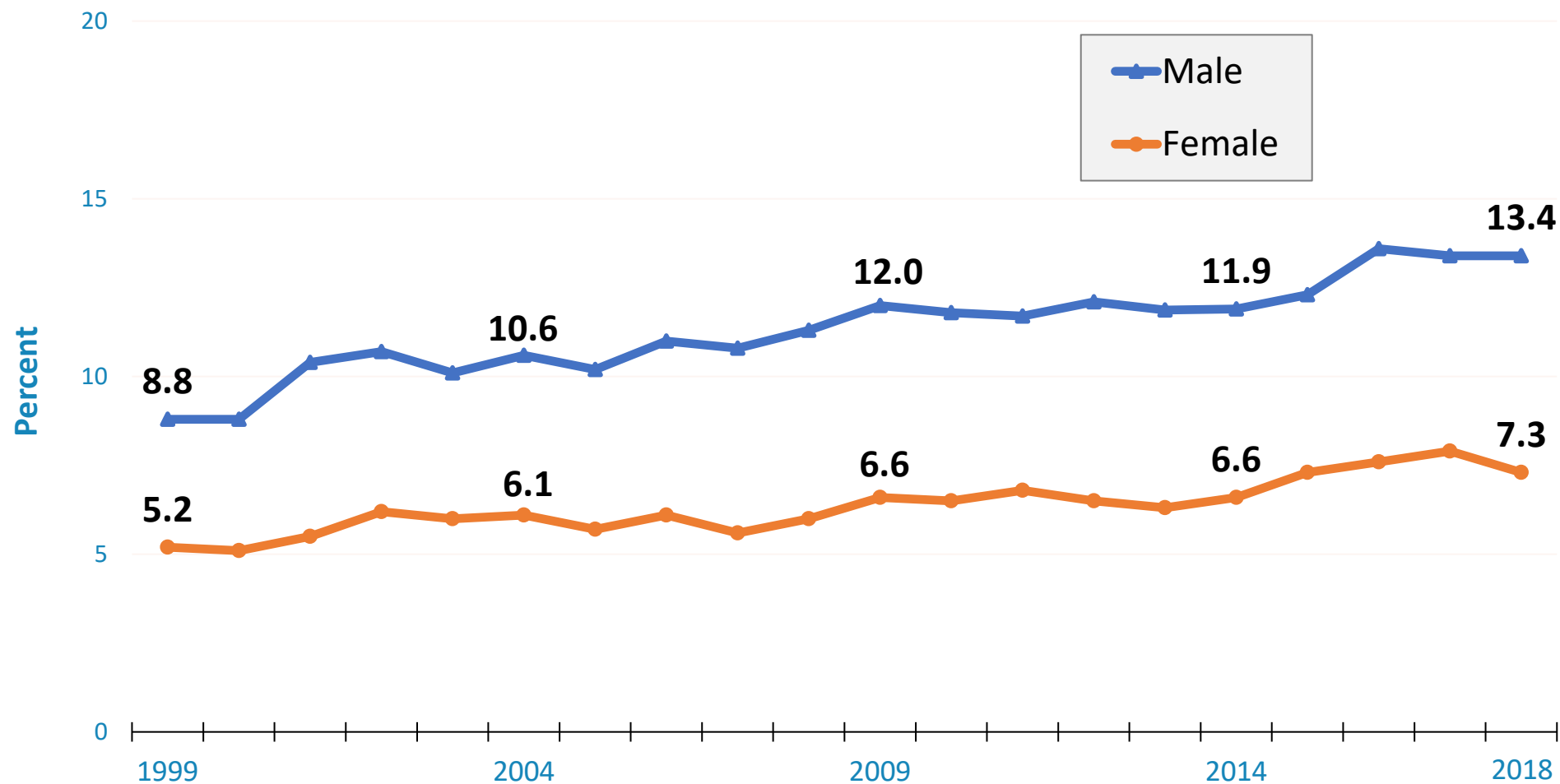
Source: CDC/NCHS, National Health Interview Survey (data for 1997-2019: <http://www.childstats.gov/americaschildren/tables/health8a.asp>; and 2019-2021: https://wwwn.cdc.gov/NHISDataQueryTool/SHS_child/index.html and AAP Research Analysis of NHIS datasets)

American Academy of Pediatrics

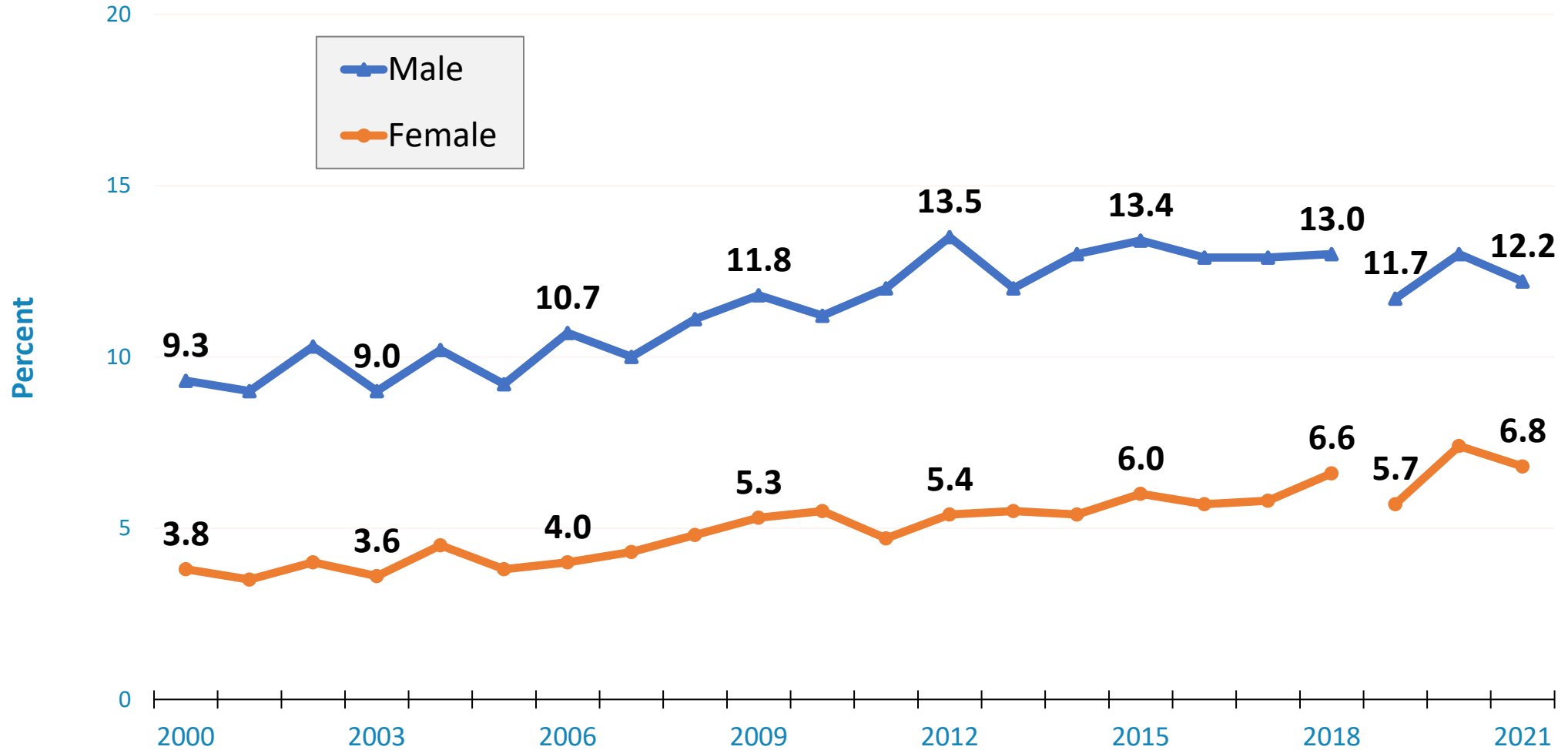
DEDICATED TO THE HEALTH OF ALL CHILDREN®



% of US Children (Ages 5-17) with a Disability Due to Chronic Health Conditions by Gender According to Parent Report, 1999-2018



% of US Children (Ages 3-17) Ever Diagnosed with ADHD by Gender According to Parent Report, 2000-2021*



*Estimates for 2019 and beyond are not directly comparable to previous years due to a survey re-design.

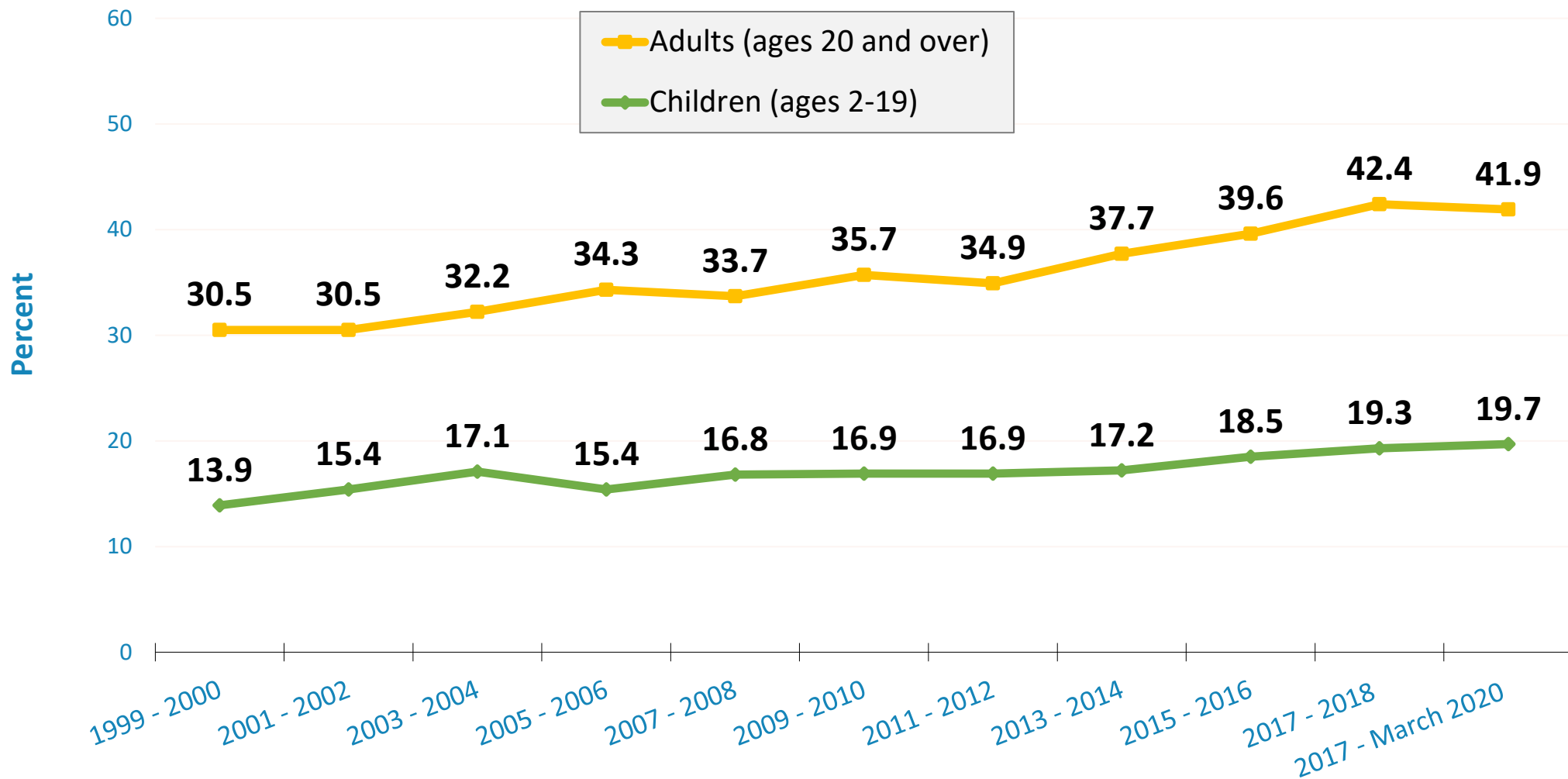
Source: AAP Research analysis of CDC/NCHS National Health Interview Survey data and Summary Health Statistics Tables (data for 2000-2018: <https://www.cdc.gov/nchs/nhis/SHS/tables.htm>; and 2019-2021: https://wwwn.cdc.gov/NHISDataQueryTool/SHS_child/index.html)

American Academy of Pediatrics

DEDICATED TO THE HEALTH OF ALL CHILDREN®



Obesity Prevalence among US Children (Ages 2-19) and Adults, 1999-2020*



*Due to COVID-19 pandemic, only partial data was collected for 2019-2020. As a result, nationally representative data for 2019-2020 cannot be released. The partial data was combined with 2017-2018 data to create a 2017-March 2020 pre-pandemic dataset.

Source: CDC/NCHS, National Health and Nutrition Examination Survey

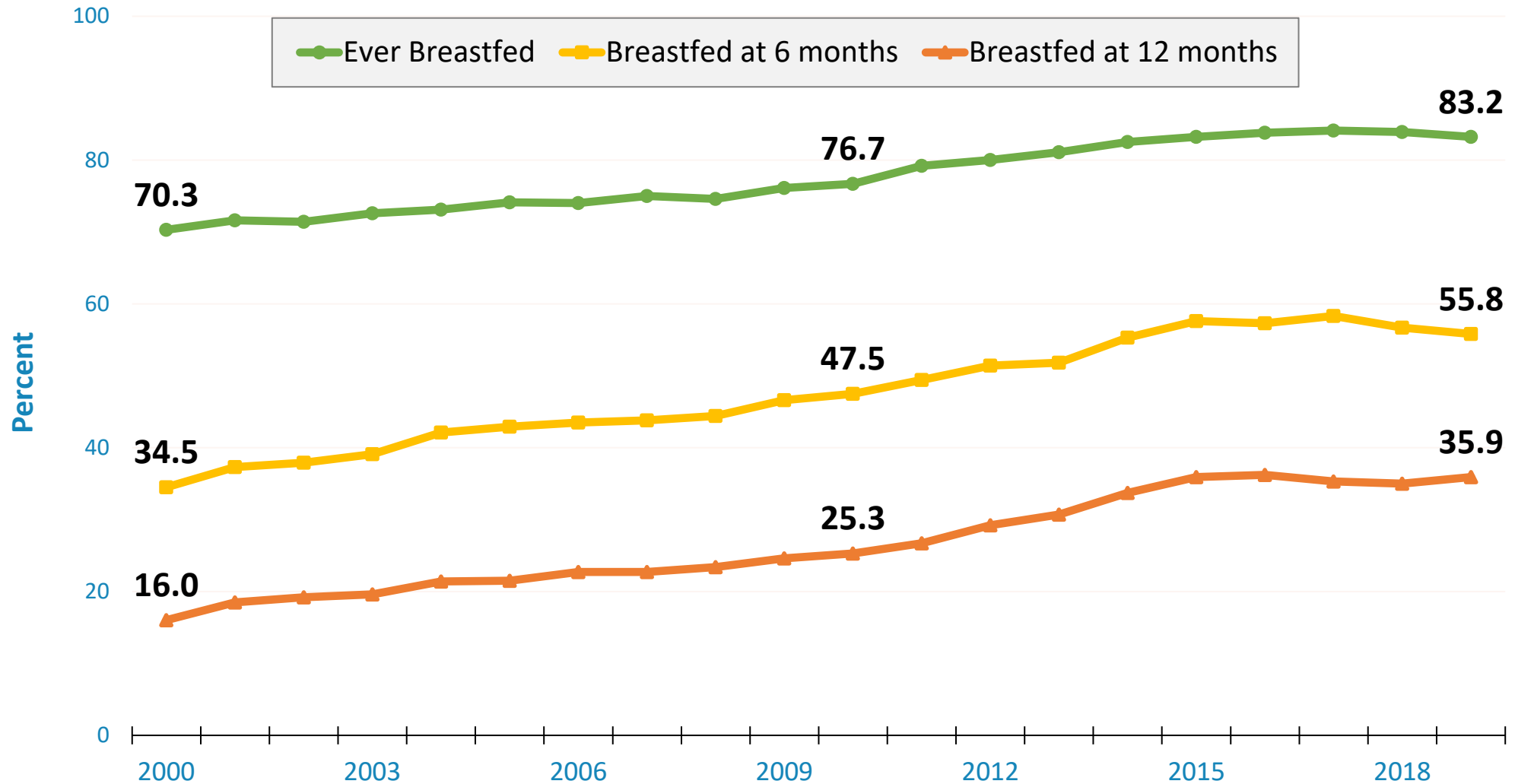
(1999-2016: <https://www.cdc.gov/nchs/data/databriefs/db288.pdf>; 2017-March 2020: <https://www.cdc.gov/nchs/data/nhsr/nhsr158-508.pdf>)

American Academy of Pediatrics

DEDICATED TO THE HEALTH OF ALL CHILDREN®



% of US Infants Breastfed by Birth Year of Infant, 2000-2019



Health Takeaways

Improvements:

- Infant mortality rates have gone down
- Fatal unintentional injuries have gone down, but have started to stabilize
- Non-fatal unintentional injuries among children have gone down
- Child and adolescent motor vehicle deaths have generally trended down but saw a slight spike in 2021
- Adolescent alcohol use has gone down
- Adolescent cigarette use has gone down
- % of breastfed children has gone up



Health Takeaways (cont.)

Challenges:

- % of infants born preterm and with low birthweight have remained relatively stable
- Number of infants born with NAS have gone up, but have recently started to stabilize
- Teen firearm and homicide death rates have significantly gone up last few years
- Youth-reported major depressive episodes have gone up
- Mental health diagnoses have gone up
- Adolescent vaping rates have increased, but have started to decline and stabilize
- Asthma rates among children have remained stable
- % of children with a disability has gone up
- % of children diagnosed with ADHD has gone up
- Obesity rates among children have gone up



For more information, please contact
Dave Prentice, MS
in Research

