



# AMERICA'S OPIOID CRISIS: THE UNSEEN IMPACT ON RHODE ISLAND CHILDREN

AS RHODE ISLAND FAMILIES STRUGGLE WITH ADDICTION, CHILDREN ARE CAUGHT IN THE FRAY.

## A GROWING CRISIS



**28% MORE** opioid-related deaths nationwide since 2015.



**82.7%** of people in Rhode Island suffering from drug dependence or abuse go untreated.



**8.7 MILLION CHILDREN** nationwide have a parent who suffers from a substance use disorder.

## A NEED FOR FAMILY-CENTERED POLICIES

KEEPING FAMILIES TOGETHER IMPROVES OUTCOMES AND LOWERS COSTS



**MORE THAN HALF**

of children placed in foster care go home to their families. Keeping families together from the start helps prevent further trauma and improves outcomes.

**MEDICAID PAID 81% OF THE \$1.5 BILLION**

that hospitals billed for treating babies suffering from opioid withdrawal in 2012.

## A DEVASTATING TOLL ON CHILDREN

FOSTER CARE PLACEMENTS ON THE RISE

**1,087** RHODE ISLAND CHILDREN were placed in foster care in 2016.

**20%** WERE INFANTS.

In **27%** of these placements, parental substance use was a factor.

MORE BABIES BORN EXPOSED TO OPIOIDS



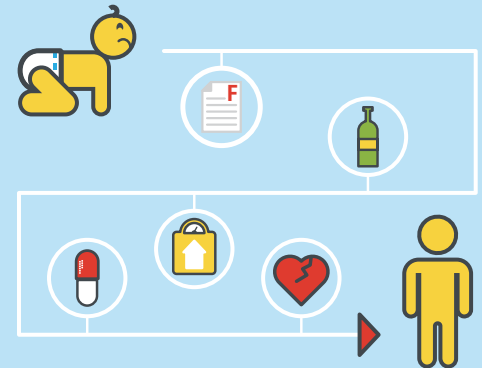
Every **25 minutes** in America, a baby is born suffering from opioid withdrawal, which can mean:

- 1 LOWER BIRTHWEIGHTS
- 2 RESPIRATORY CONDITIONS
- 3 FEEDING DIFFICULTIES
- 4 SEIZURES
- 5 LONGER HOSPITAL STAYS

### A LIFELONG IMPACT

Children dealing with traumatic experiences can face social, emotional, physical, and mental health challenges that last into adulthood.

Left unaddressed, early childhood adversity can lead to **school failure**, risky behaviors like **alcohol and drug use**, and increased chance of health conditions like **obesity and heart disease**.



## WHAT YOU CAN DO

RETHINK OUR APPROACH: SUPPORT CHILDREN AND FAMILIES IN HEALING TOGETHER

- Create policies that prioritize prevention** and allow children to remain safely with their families during treatment.
- Give providers tools** to recognize, treat, and support children and their parents affected by trauma to lessen the lifelong impact and promote healthy families.
- Ensure families have real and timely access to services** through Medicaid and other prevention and treatment programs.

