

# Oral Assessment of the Newborn

What makes a difference for  
breastfeeding?

*Breastfeeding Curriculum, updated 2021*

*This curriculum is free to use within  
educational settings. Please credit the AAP  
Breastfeeding Curriculum without altering the  
content.*



# Oral Assessment of the Newborn

## Normal Infant

To the right a normal tongue is pictured. Stanford's Image Gallery is a great professional resource: <https://med.stanford.edu/newborns/professional-education/photo-gallery/mouth.html>

The images in this presentation are shared with permission by Pete Pellegrino, MD & Janelle Aby.



# Oral Assessment Anatomical Findings- No Breastfeeding Concerns

- Bohn nodules
- Epstein's pearls (shown)
- Natal teeth
- Ranula – mucous retention cysts



Epstein's pearls



# Anatomical Findings-Possible Breastfeeding Concerns

- Ankyloglossia (shown)
- Bifid uvula (may be associated with submucous cleft)
- Retrognathia
- Cleft lip and palate



Restricted  
frenulum



Look for submucous cleft palate or bifid uvula

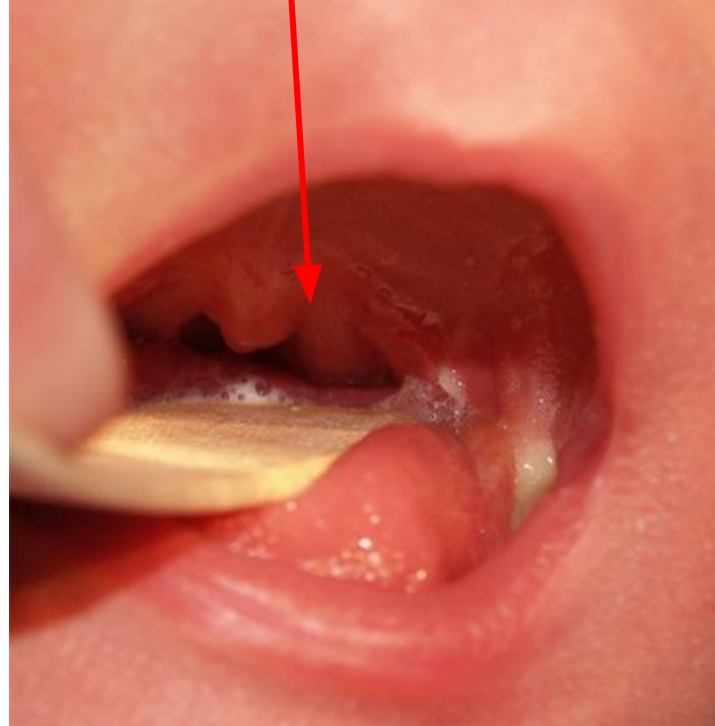


Image by Janelle Aby, MD: <https://med.stanford.edu/newborns/professional-education/photo-gallery/mouth.html>

Breastfeeding Curriculum



# Oral Assessment-look for micrognathia



Infant above has both micro and retrognathia. A recessed chin may make obtaining a deep latch more difficult



Infant above has a normal chin.



# Oral Assessment Evaluation Question

Which of the following would be least likely to have an impact on breastfeeding?

- A. Submucous clefts
- B. Epstein's pearls
- C. Abnormal tongue function or anatomy
- D. Retrognathia



# Oral Assessment Evaluation Question

Which of the following would be least likely to have an impact on breastfeeding?

- A. Submucous clefts
- B. Epstein's pearls**
- C. Abnormal tongue function or anatomy
- D. Retrognathia





# Acknowledgement

This slide deck was supported by the Centers for Disease Control and Prevention of the U.S. Department of Health and Human Services (HHS) as part of a financial assistance award totaling \$200,000 with 100 percent funded by CDC/HHS. The contents are those of the author(s) and do not necessarily represent the official views of, nor an endorsement, by American Academy of Pediatrics, CDC/HHS, or the U.S. Government.

## Thank you to the Project Advisory Committee organizations:

- American Academy of Pediatrics (AAP), Lead Organization
- Academy of Breastfeeding Medicine (ABM)
- American Academy of Family Physicians (AAFP)
- American College of Obstetricians and Gynecologists (ACOG)
- American College of Osteopathic Pediatricians (ACOP)
- Association of Women's Health, Obstetric and Neonatal Nurses (AWHONN)
- National Hispanic Medical Association (NHMA)
- National Medical Association (NMA)
- Reaching Our Sisters Everywhere (ROSE)
- United States Breastfeeding Committee (USBC)

## Thank you to the many expert reviewers of these curriculum resources!

Contact [lactation@aap.org](mailto:lactation@aap.org) to request PowerPoint version. Please note: altered content must be approved by AAP.

## Thank you to the Project Advisory Committee members:

- Joan Meek, MD, MS, RD, FAAP, FABM, IBCLC
- Julie Ware, MD, MPH, FAAP, IBCLC
- Lori Feldman-Winter, MD, MPH, FAAP
- Tara Williams, MD, FAAP, FABM
- Julie Wood, MD, FAAFP
- Lauren Hanley, MD, IBCLC, FACOG
- Sharon Mass, MD, FACOG
- Michal Young, MD, FAAP
- Sahira Long, MD, IBCLC, FAAP, FABM
- Jason Jackson, DO, FACOP
- Amelia Psmythe Seger
- Kelly McGlothen-Bell, PhD, RN, IBCLC
- Jennifer Nelson, MD, MPH, FAAP, DipABLM
- Susan Rothenberg, MD, IBCLC, FACOG, FABM
- Judith Flores, MD
- Sara Oberhelman, MD, CLC, FAAFP
- Caitlin Weber MD, MS, IBCLC, FAAFP
- Leslie Cortes, MD
- Kelsey Sullivan, MD
- Emily Fishman, MD, MSCI
- Melissa Hardy, MD
- Mau Assad, MD
- Ariana Rudnick, MD
- Whitney Lieb, MD

Breastfeeding Curriculum

