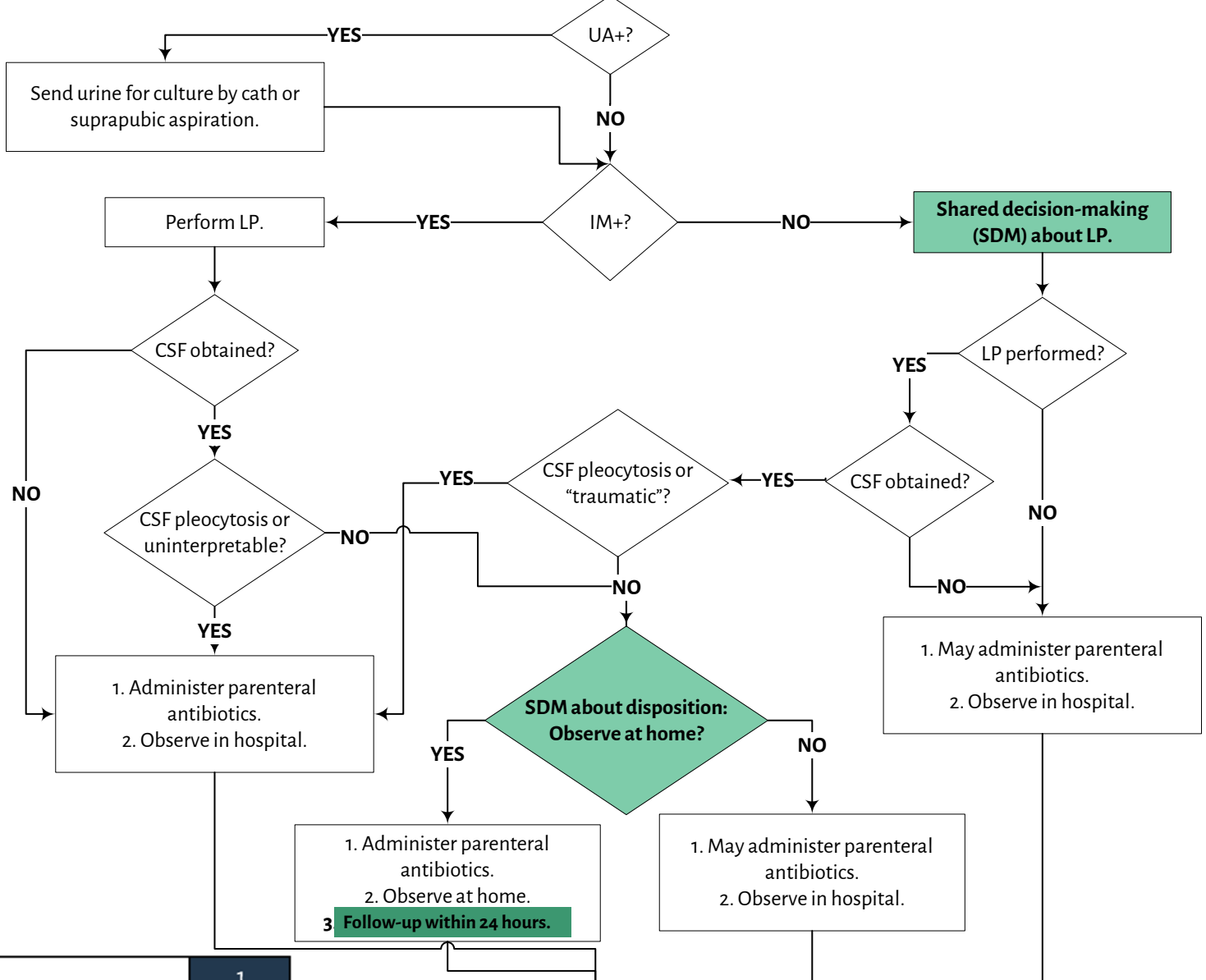


This pathway is for infants who are:
 Well-appearing
 Full Term
 Without chronic medical conditions
 With a temperature ≥ 38.0 C
 Do NOT have an evident source of infection

22-28 days old

Obtain urinalysis (UA), blood culture (BCx), and inflammatory markers (IM).



Primary Measures	1
	2
	3
	4
Secondary Measures	1
	2a
	2b
	3
Balancing Measures	1a
	1b

If all Cx- and HSV PCR- (if sent) at 24-36 hours and infant clinically well:
 1. Discontinue antibiotics and acyclovir (if initiated)
 2. **Discharge infants within 36 hours**

